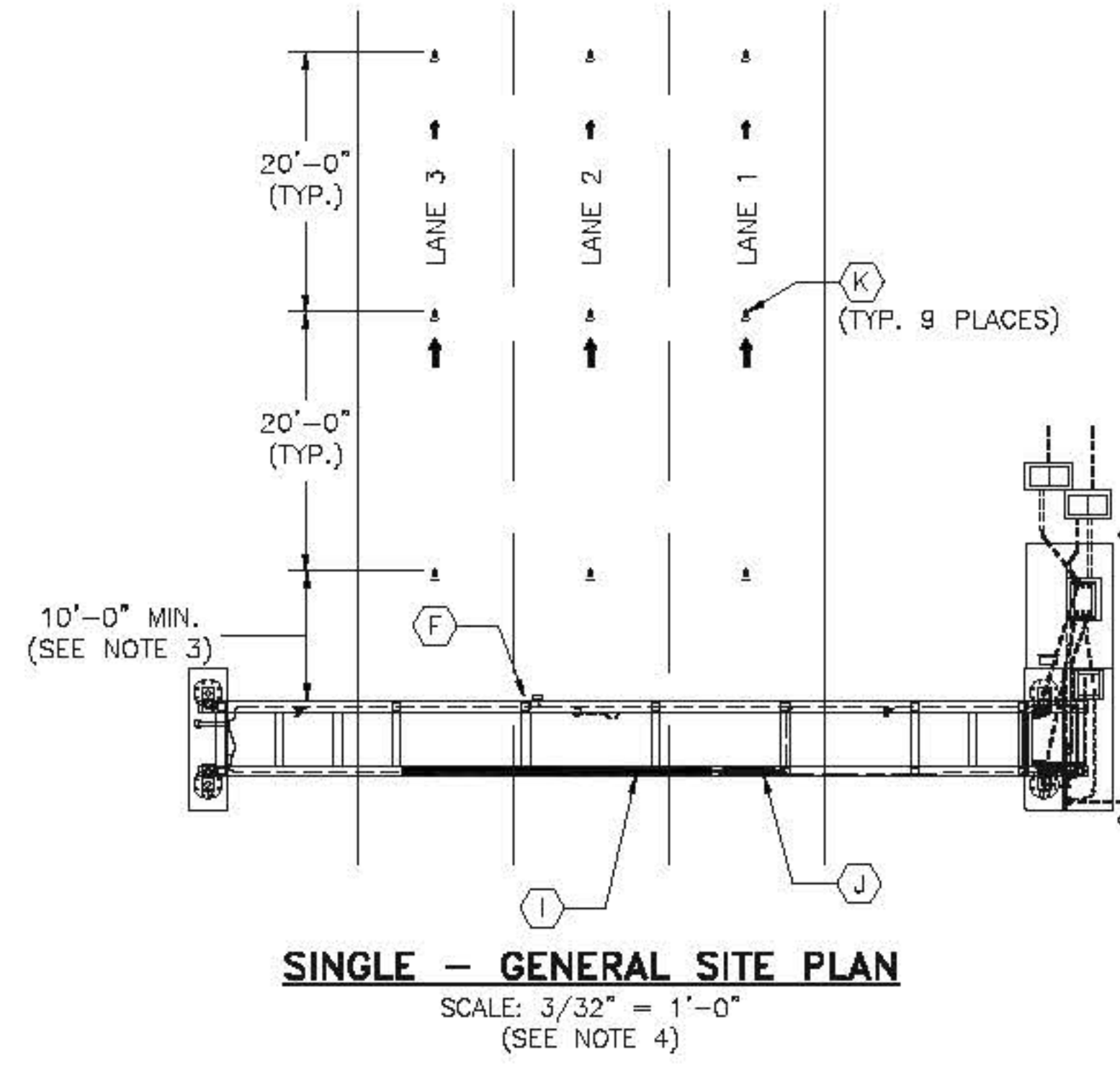
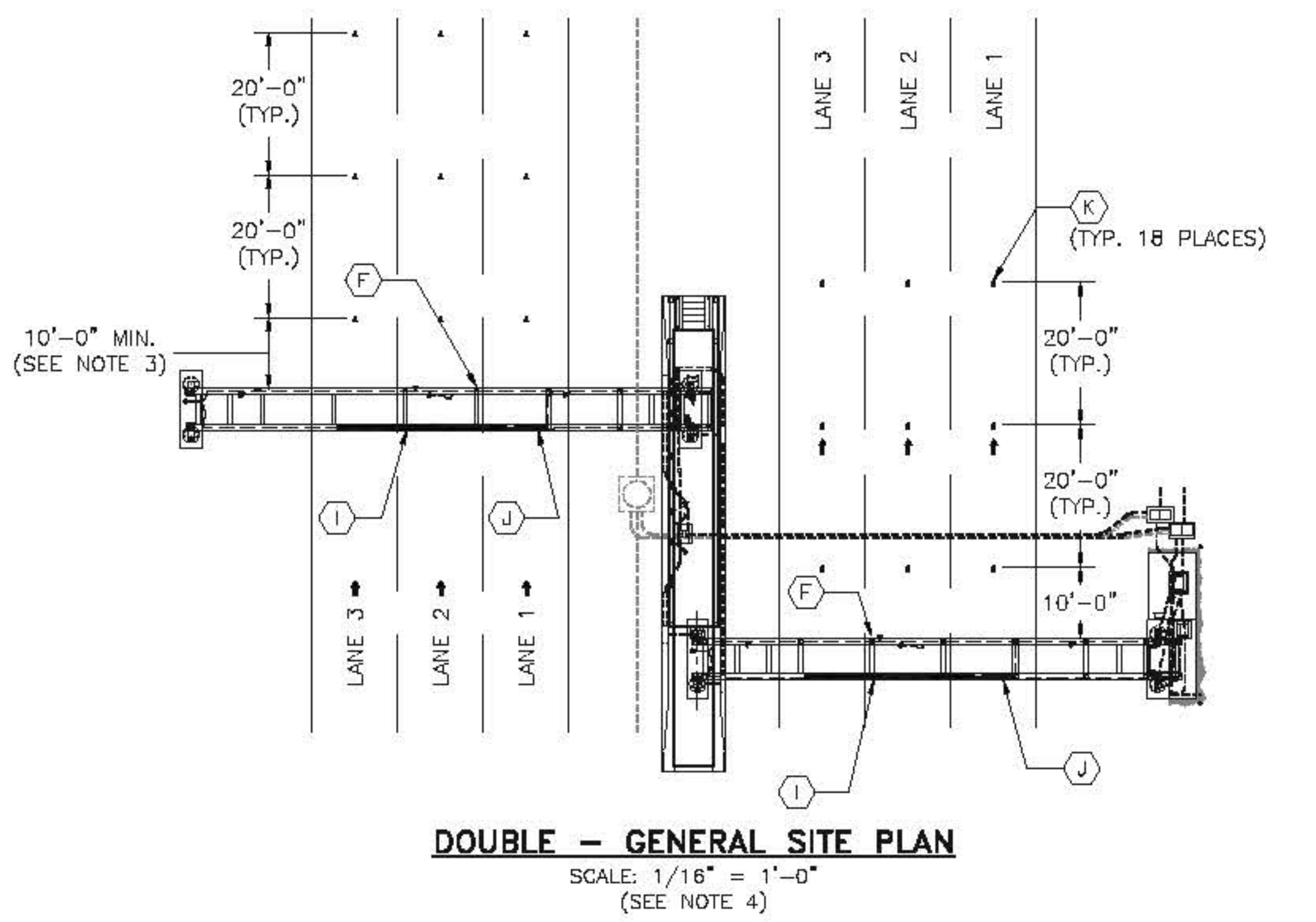


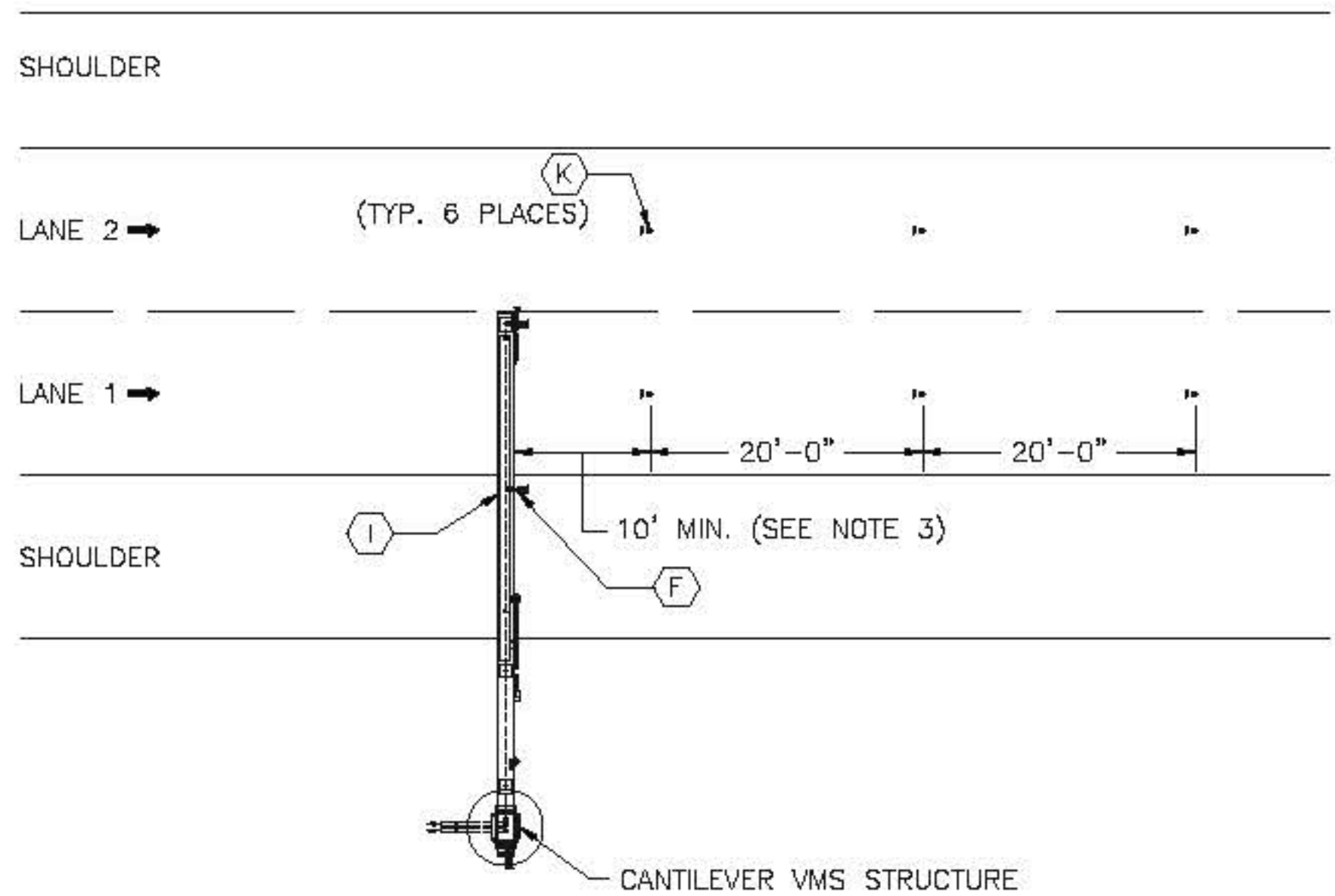
BUTTERFLY - GENERAL SITE PLAN
SCALE: 3/32" = 1'-0"
(SEE NOTE 4)



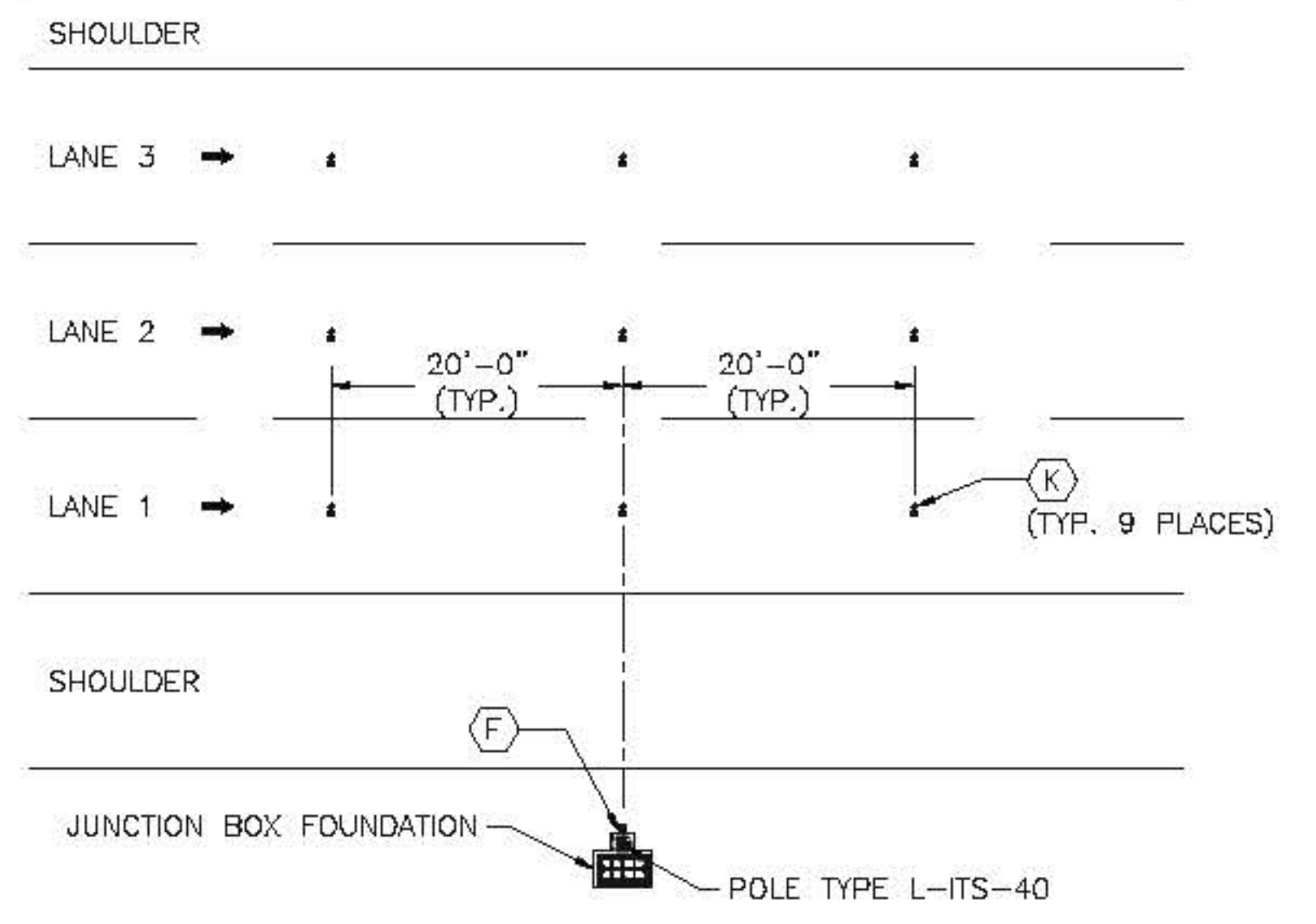
SINGLE - GENERAL SITE PLAN
SCALE: 3/32" = 1'-0"
(SEE NOTE 4)



DOUBLE - GENERAL SITE PLAN
SCALE: 1/16" = 1'-0"
(SEE NOTE 4)



CANTILEVER - GENERAL SITE PLAN
SCALE: 3/32" = 1'-0"
(SEE NOTE 4)

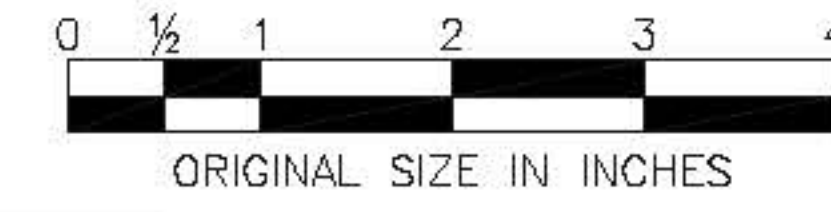


POLE MOUNTED - GENERAL SITE PLAN
SCALE: 3/32" = 1'-0"
(SEE NOTE 4)

NOTES:

- FOR LEGEND, ABBREVIATIONS, AND CABLE AND CONDUIT SCHEDULES SEE STANDARD DRAWING ITS-01 AND ITS-02.
- ACTUAL QUANTITY OF SENSORS INSTALLED WILL VARY DEPENDING ON ROADWAY. SEE THE CONTRACT PLANS FOR QUANTITY TO INSTALL. SENSORS SHALL BE INSTALLED ALONG THE CENTERLINE OF THE TRAVELED LANE.
- THE NEAREST TRAFFIC SENSOR SHALL BE INSTALLED NO LESS THAN 10FT FROM SIGN STRUCTURES OR WAP.
- ROADWAY AND LANE CONFIGURATIONS WILL VARY IN THE FIELD. SEE THE CONTRACT PLANS FOR DIMENSIONS OF LANES, SHOULDERS, AND MEDIAN.
- LEFT HAND SIDED CANTILEVER TDS INSTALLATIONS SHALL MIRROR THAT OF RIGHT HAND SIDED CANTILEVER INSTALLATIONS AS SHOWN ON THIS PLAN.

	BY	DATE
MADE	EMG	08/2010
TRACED	EMG	08/2010
CHECKED	MS	08/2010
SUPERVISED	ALB	08/2010



APP.	NO.	DATE	REVISION
	C	10/2013	CONFORMED DRAWING

NEW JERSEY TURNPIKE AUTHORITY
NEW JERSEY TURNPIKE
 TRAFFIC DETECTION STATION DETAILS - 2
 HNTB 9 ENVIN ROAD, SUITE 202, PARLISPPANY, NJ 07054 - CO.# 240428000700
ANTHONY L. BARTELLO
 New Jersey Professional Engineer License No. 0E 40200
STANDARD DRAWING ITS-25