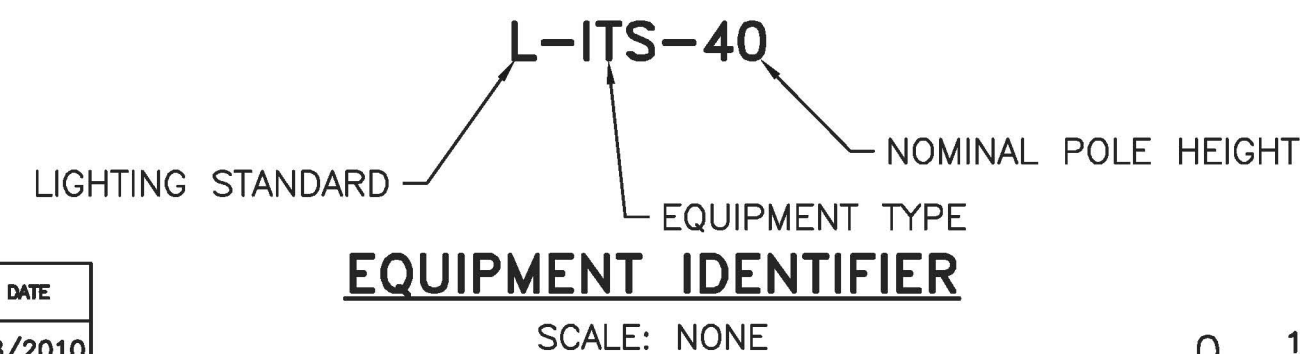


**POLE MOUNTED ITS ENCLOSURE
(FOR TDS)**

SCALE: 1/2" = 1'-0"

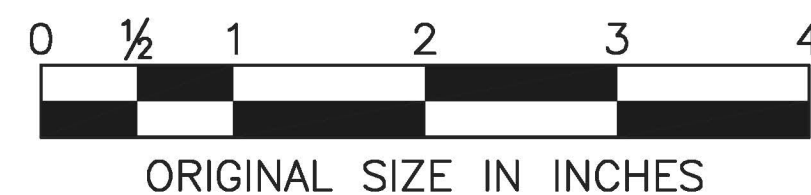
NOTES:

- SEE STANDARD DRAWINGS ITS-01 AND ITS-02 FOR LEGEND, ABBREVIATIONS, AND GENERAL NOTES.
- COMPRESSION DOUBLE JOINT MOUNT HARDWARE SHALL BE AS PROVIDED BY WAP/REPEATER MANUFACTURER.
- HEIGHT OF INSTALLATION FOR THE WAP AND REPEATER SHALL BE A MINIMUM OF 28'-0" ABOVE GRADE. SEE CONTRACT PLANS FOR LOCATIONS.
- THE WIRELESS ACCESS POINT, WIRELESS TRAFFIC SENSOR, AND WIRELESS REPEATER SHALL BE AS PER SPECIFICATIONS.
- PROVIDE FIBER JUMPER CABLES AND SC FIBER CONNECTORS AS REQUIRED BETWEEN EQUIPMENT IN ITS ENCLOSURE.
- THE QUANTITY OF WIRELESS TRAFFIC SENSORS INSTALLED SHALL BE AS SHOWN ON THE CONTRACT PLANS.
- FOR DETAILS OF JUNCTION BOX FOUNDATION TYPE 1 SEE STANDARD DRAWING E-12. FOR DETAILS OF TB-A SEE STANDARD DRAWING E-09.
- SEE CONTRACT PLANS FOR POSITION OF WAP WHEN INSTALLED ON SIGN STRUCTURE.
- SEE SPECIFICATIONS FOR INFORMATION ON EPOXY.
- CABLE CONNECTOR SHALL BE AS SUPPLIED BY WAP MANUFACTURER OR APPROVED EQUAL. CONTRACTOR SHALL INSTALL CONNECTOR AS DIRECTED BY WAP MANUFACTURER. THE CONTRACTOR SHALL NOT ATTEMPT TO DISASSEMBLE THE CONNECTOR WITHOUT THE EXTRACTION TOOL SPECIFIED BY THE MANUFACTURER. THE CONNECTOR SHALL BE REPLACED AT NO EXPENSE TO THE AUTHORITY IN THE EVENT IT IS DAMAGED IN ANY WAY BY IMPROPER ASSEMBLY OR INSTALLATION. WRAP CONNECTOR AND APPROXIMATELY 3" OF THE CABLE WITH A SINGLE HALF-LAPPED LAYER OF VINYL ELECTRICAL TAPE.
- SEE STANDARD DRAWING ITS-07 AND ITS-08 FOR CANTILEVER AND BUTTERFLY WAP INSTALLATIONS.
- NO WIRING OR CABLES SHALL BE REQUIRED FOR THE REPEATER. INSTALL IN LOCATIONS AS SHOWN ON THE CONTRACT PLANS.
- TRAFFIC SENSORS SHALL BE INSTALLED SUCH THAT THE DIRECTION MARKING POINTS IN THE DIRECTION OF TRAFFIC FOR THE LANE IN WHICH IT IS INSTALLED.
- SEE CONTRACT PLANS FOR TYPE AND ROUTING OF POWER AND COMMUNICATIONS CABLING BACK TO THE SCC.
- LOCATION OF EQUIPMENT WITHIN THE POLE MOUNTED ITS ENCLOSURE IS DIAGRAMMATIC. FINAL PLACEMENT MAY REQUIRE MODIFICATIONS BASED ON EQUIPMENT APPROVED FOR USE.
- SEE STANDARD DRAWING ITS-32 FOR TYPICAL ITS ENCLOSURE MOUNTING AND HARDWARE DETAILS.
- ENCLOSURE EQUIPMENT SHALL BE REARRANGED WHERE WAP AND CCTV SYSTEM IS REQUIRED TO BE INSTALLED IN A SINGLE POLE MOUNTED ITS ENCLOSURE AS SHOWN ON THE CONTRACT PLANS. SEE ITS-32 FOR CCTV EQUIPMENT.
- LIGHTING STANDARD SHOWN SHALL BE OF TYPE AS SHOWN ON NJTA STANDARD DRAWING E-01 AND E-09, UNLESS OTHERWISE NOTED.

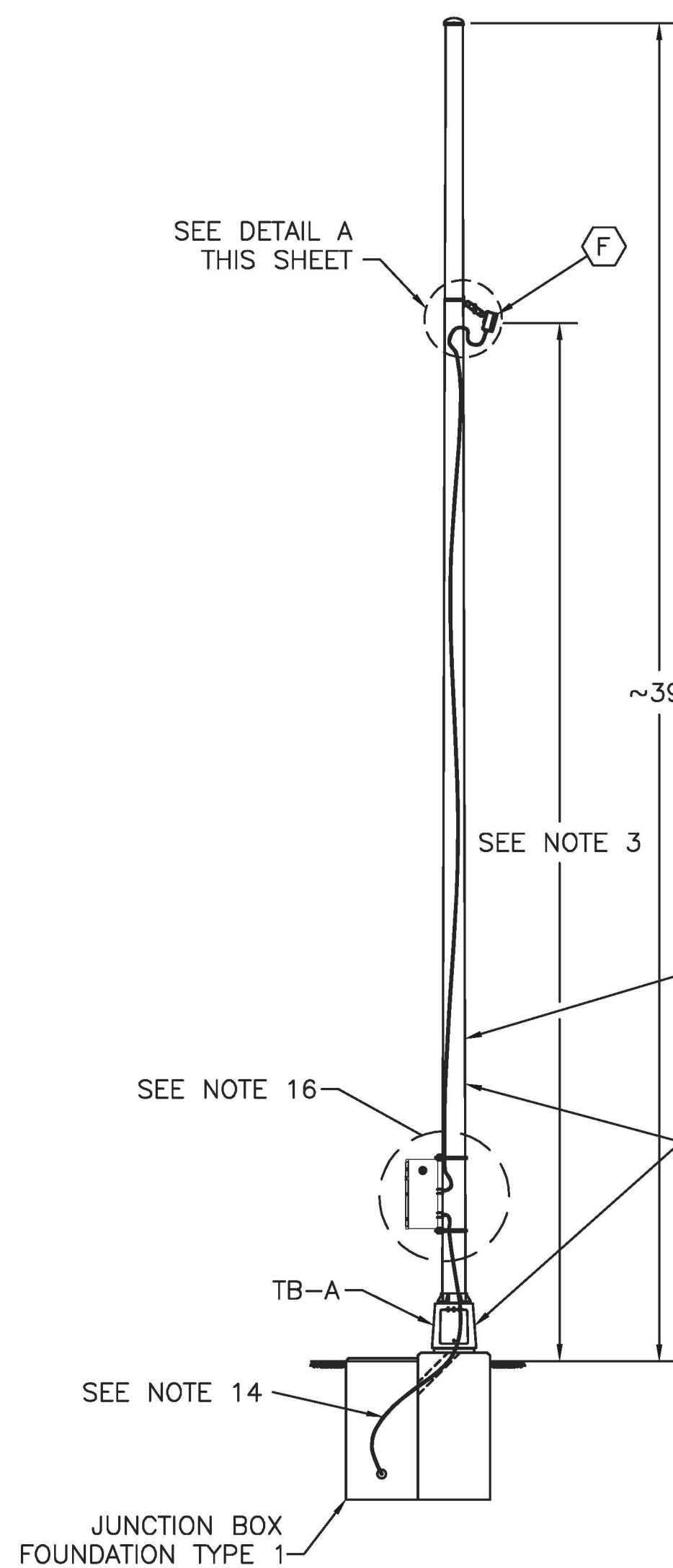


EQUIPMENT IDENTIFIER

SCALE: NONE



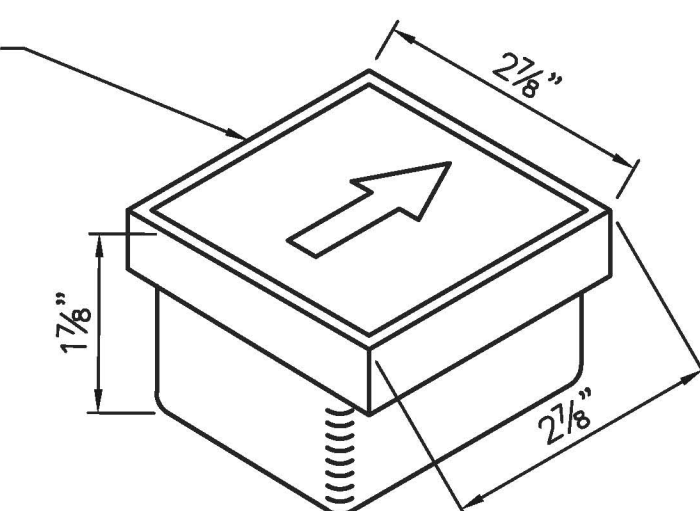
ORIGINAL SIZE IN INCHES



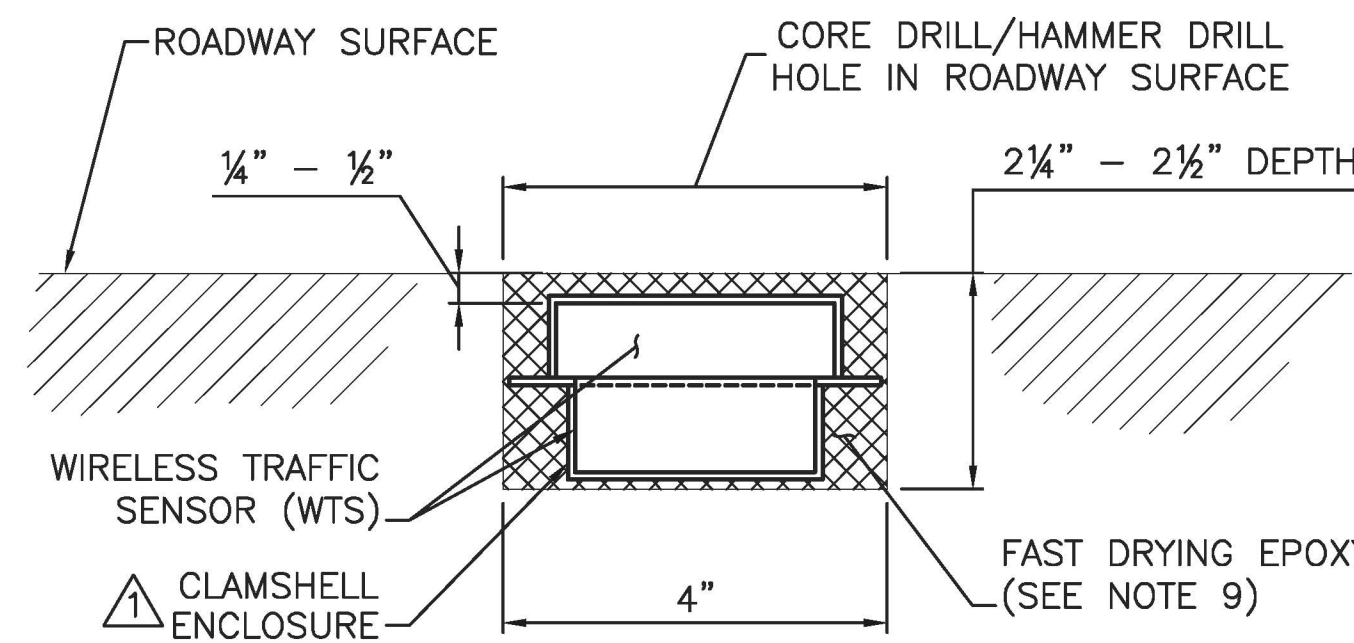
WAP - POLE MOUNTED

SCALE: 1/4" = 1'-0"
(SEE NOTE 7)

SEE NOTES 4, 6 AND 13



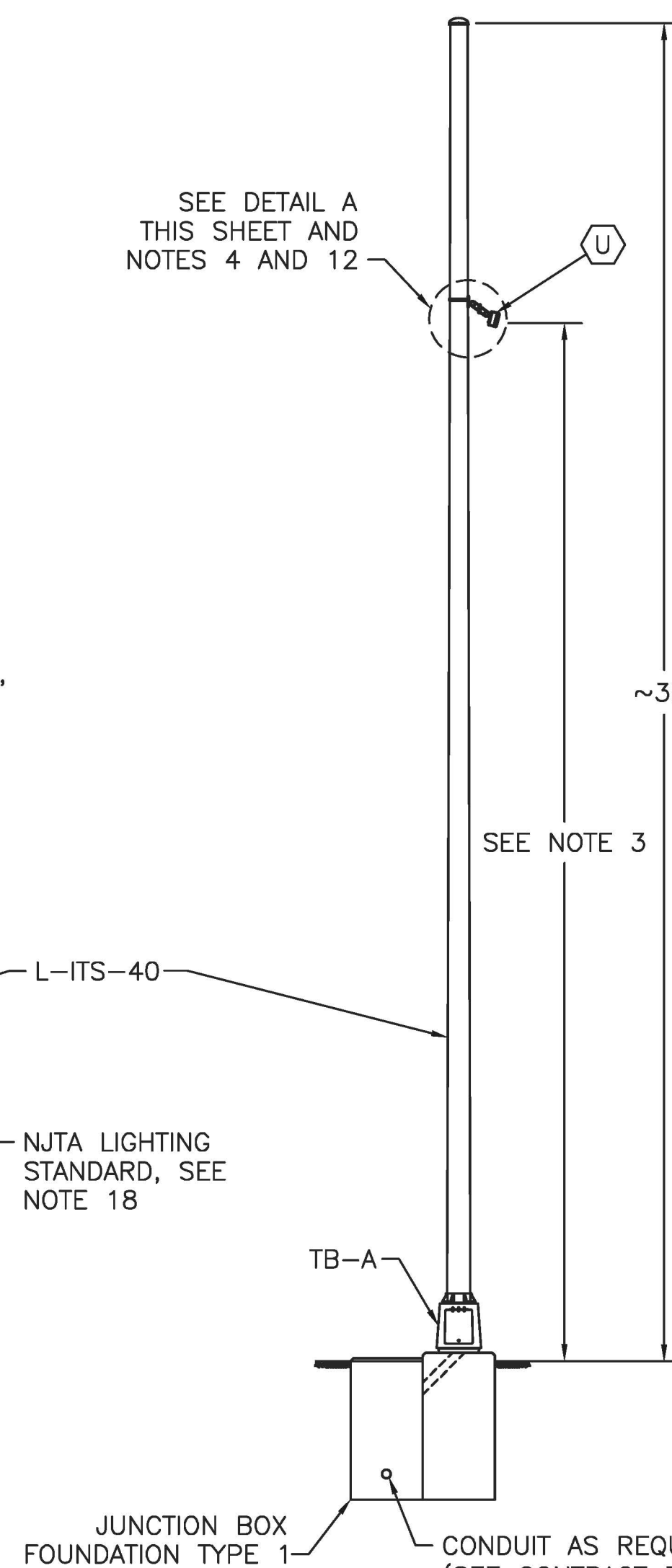
WIRELESS TRAFFIC SENSOR - ISOMETRIC



WIRELESS TRAFFIC SENSOR - IN ROADWAY ELEVATION

WIRELESS TRAFFIC SENSOR DETAIL

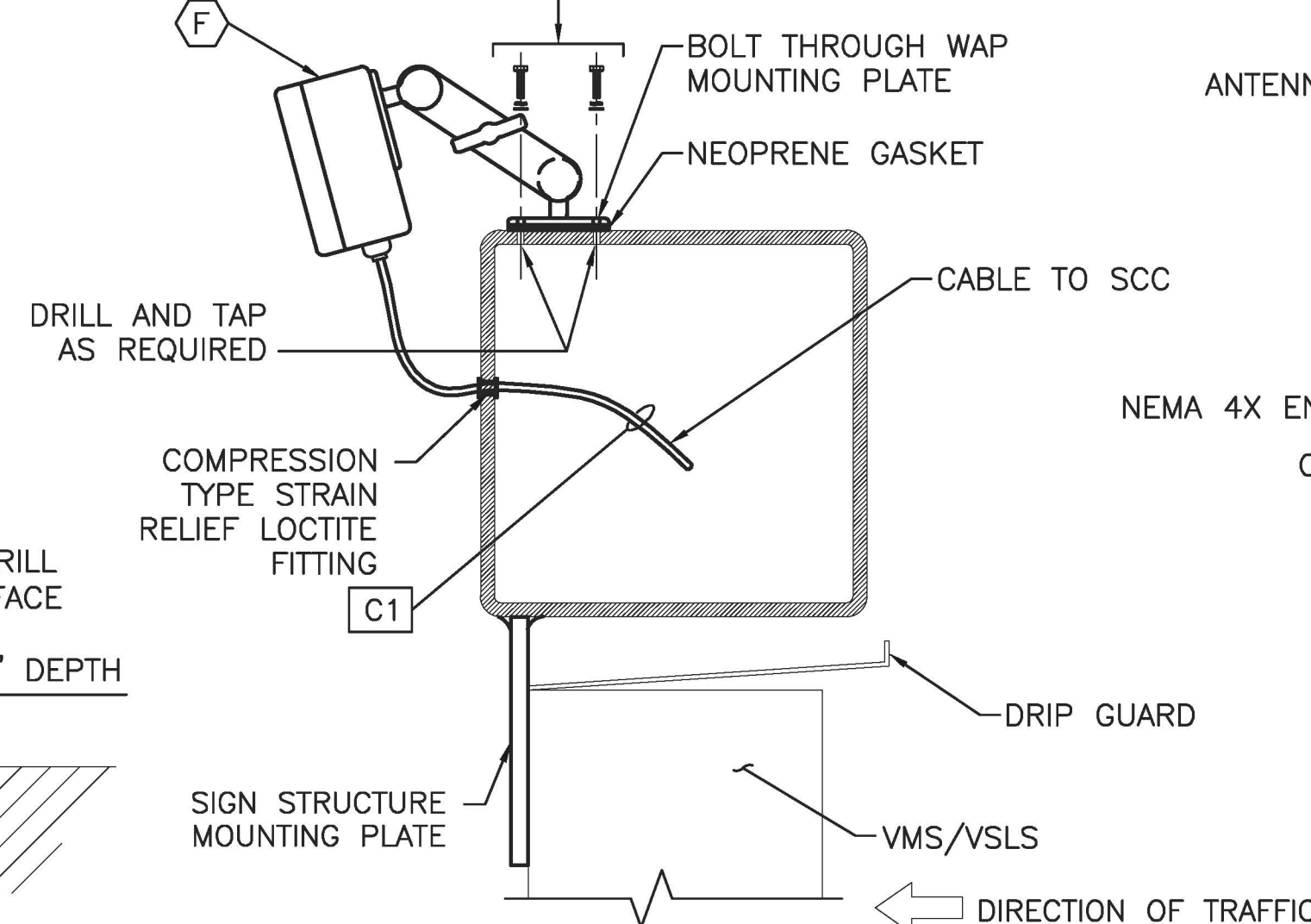
SCALE: 6" = 1'-0"



REPEATER - POLE MOUNTED

SCALE: 1/4" = 1'-0"
(SEE NOTE 7)

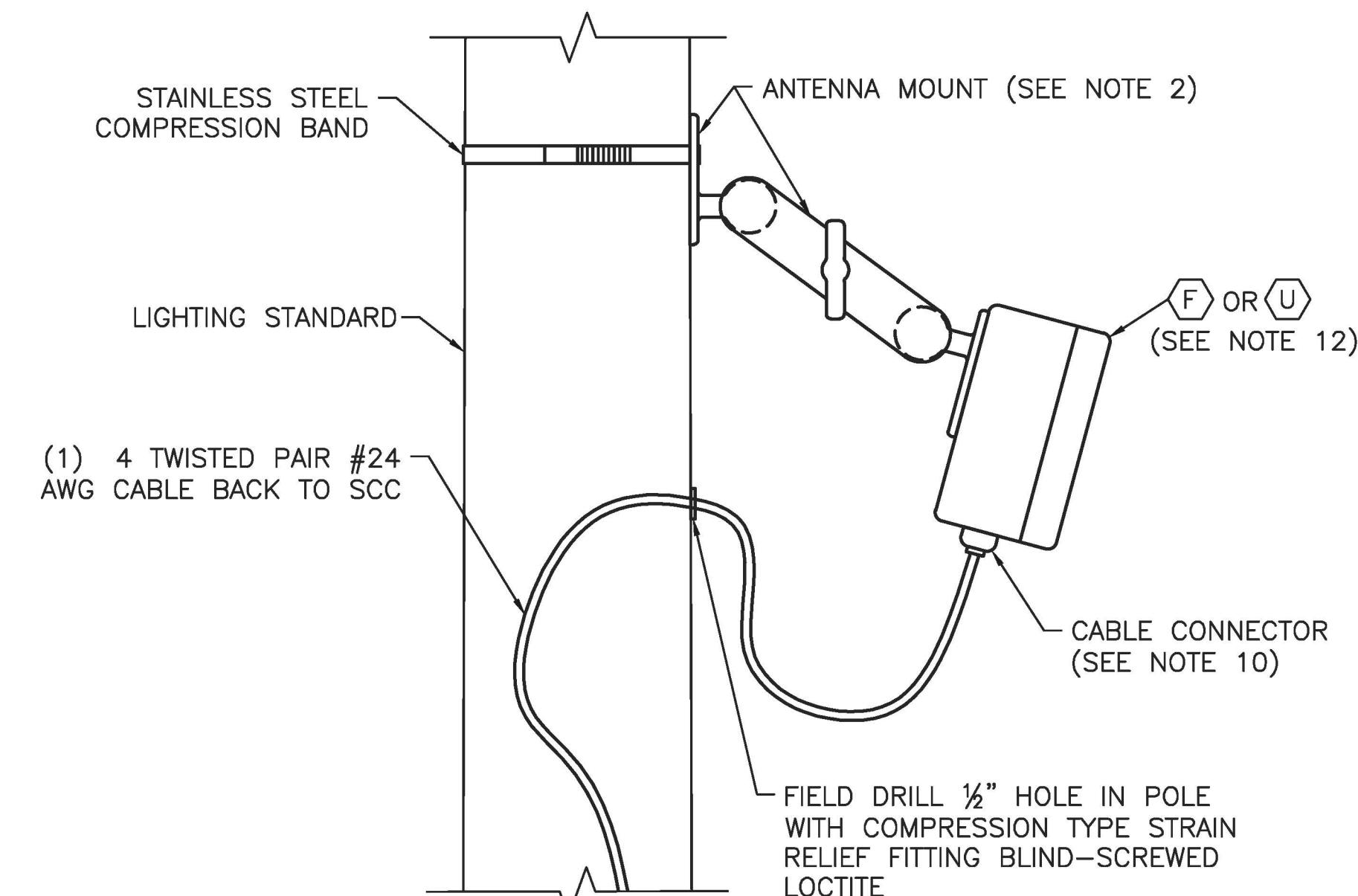
- (4) 1/4"-28NC HEX HEAD BOLTS
- (4) LOCK WASHERS
- (4) WASHERS



WAP ON CANTILEVER SIGN STRUCTURE

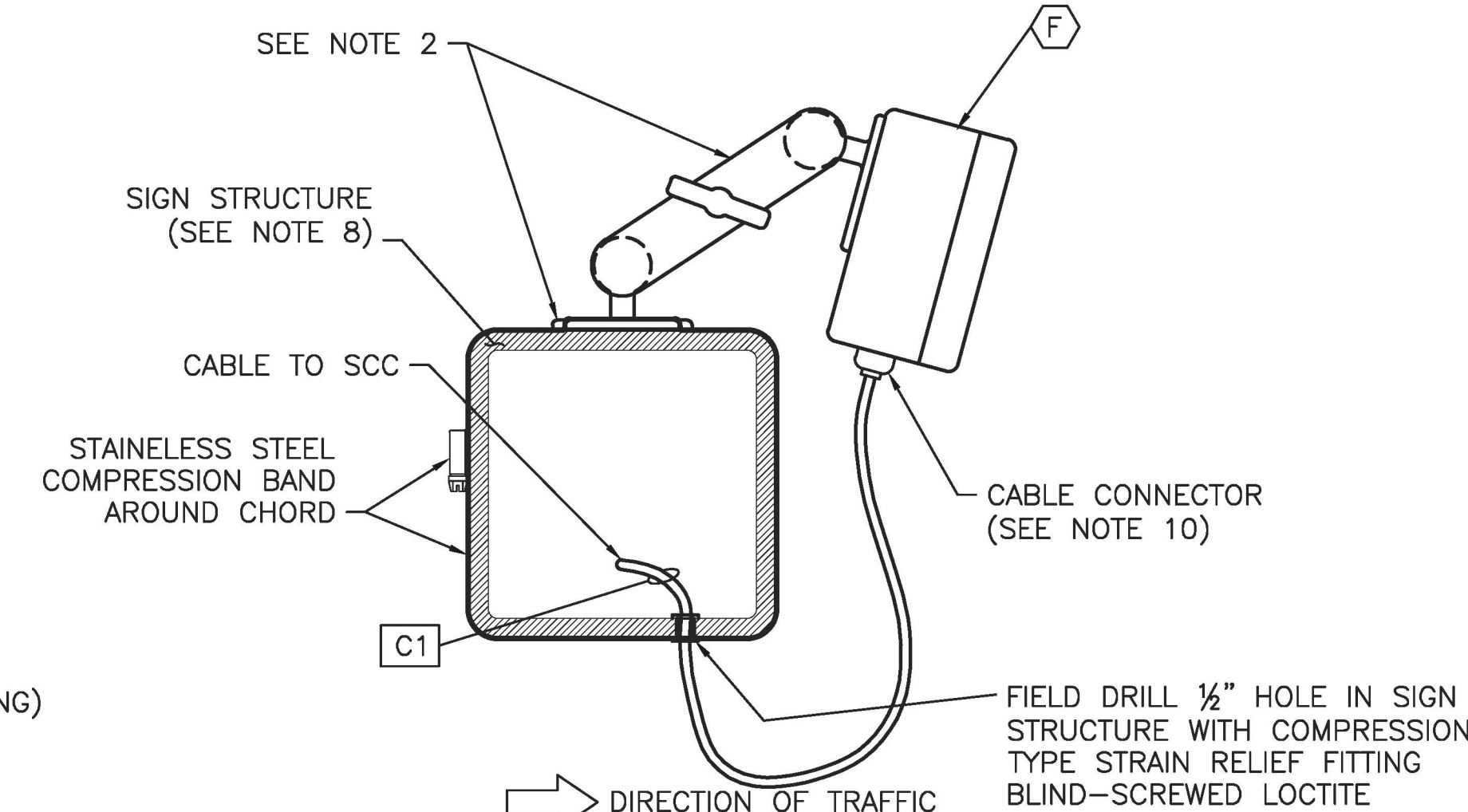
SCALE: 2" = 1'-0"

APP. NO.	DATE	REVISION
1	5/2014	ADDED CLAMSHELL
C	10/2013	CONFORMED DRAWING



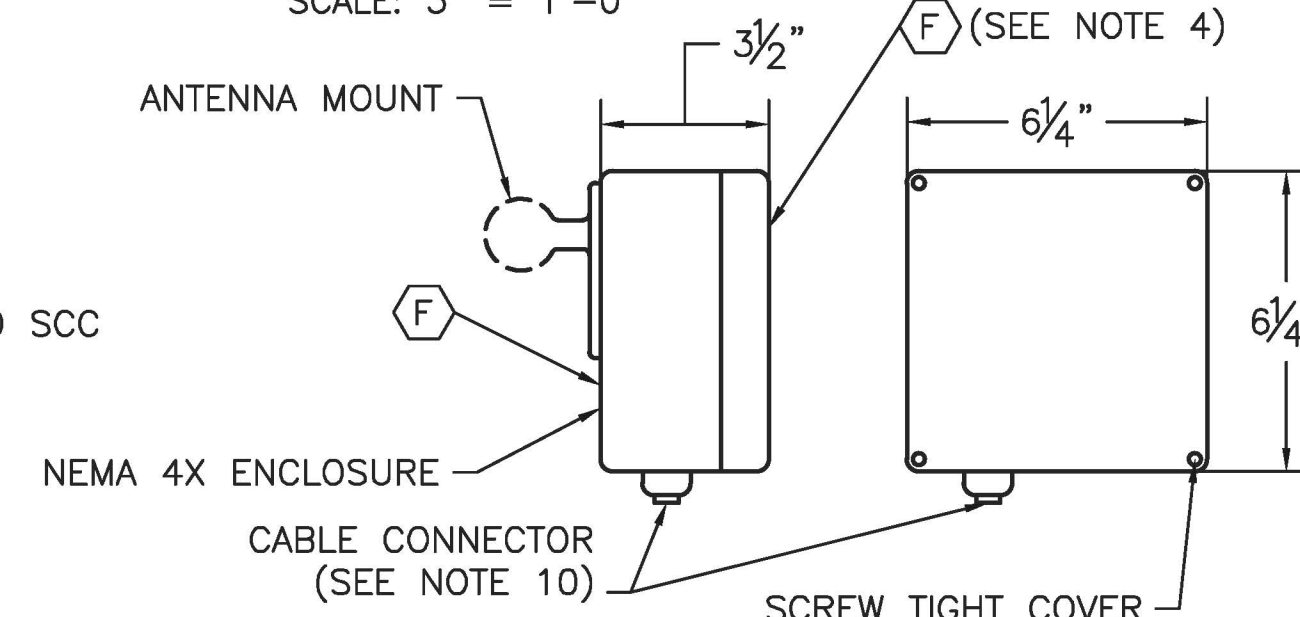
DETAIL A

SCALE: 3" = 1'-0"



WAP MOUNTED ON OVERHEAD OR BUTTERFLY SIGN STRUCTURE

SCALE: 3" = 1'-0"



WIRELESS ACCESS POINT (WAP)

SCALE: 3" = 1'-0"

NEW JERSEY TURNPIKE AUTHORITY
NEW JERSEY TURNPIKE
TRAFFIC DETECTION STATION DETAILS - 1

HNTB 9 ENTIN ROAD, SUITE 202, PARSIPPANY, NJ 07054 - CO# 24GA28000700
ANTHONY L. BARTELLO
New Jersey Professional Engineer License No. GE 45842

STANDARD DRAWING
ITS-24

	BY	DATE
MADE	EMG	08/2010
TRACED	MDC	08/2010
CHECKED	EMG	08/2010
SUPERVISED	ALB	08/2010