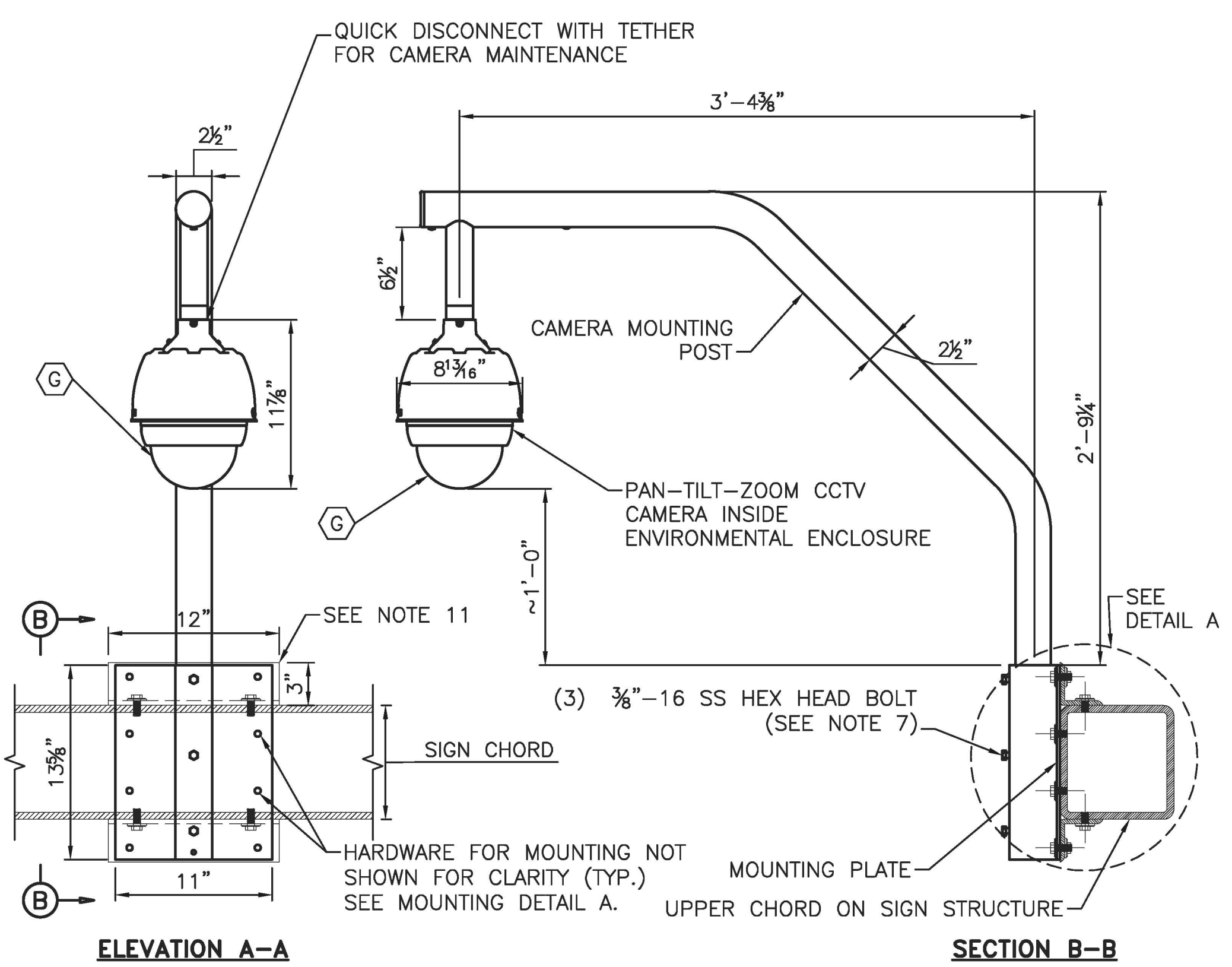
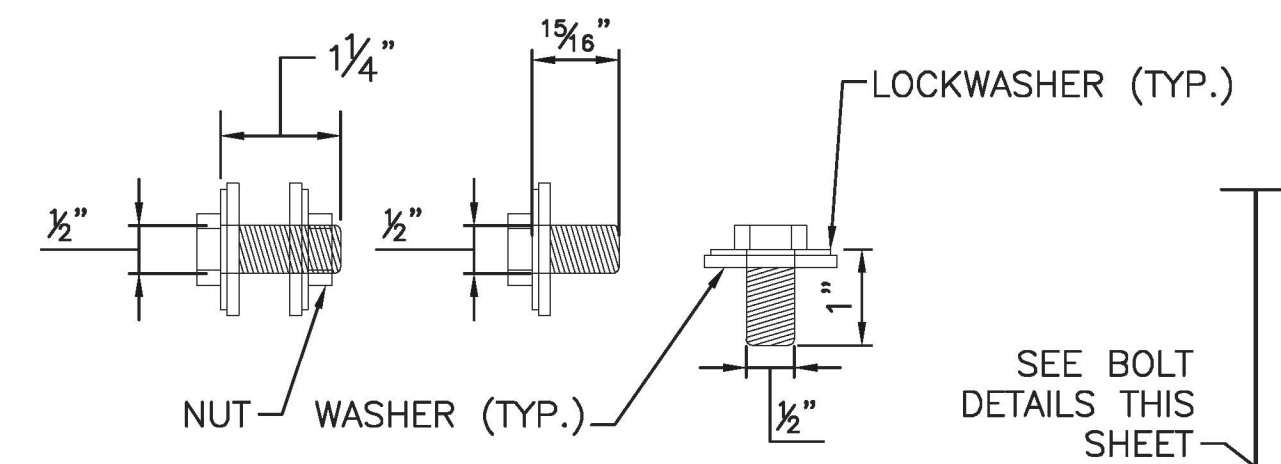


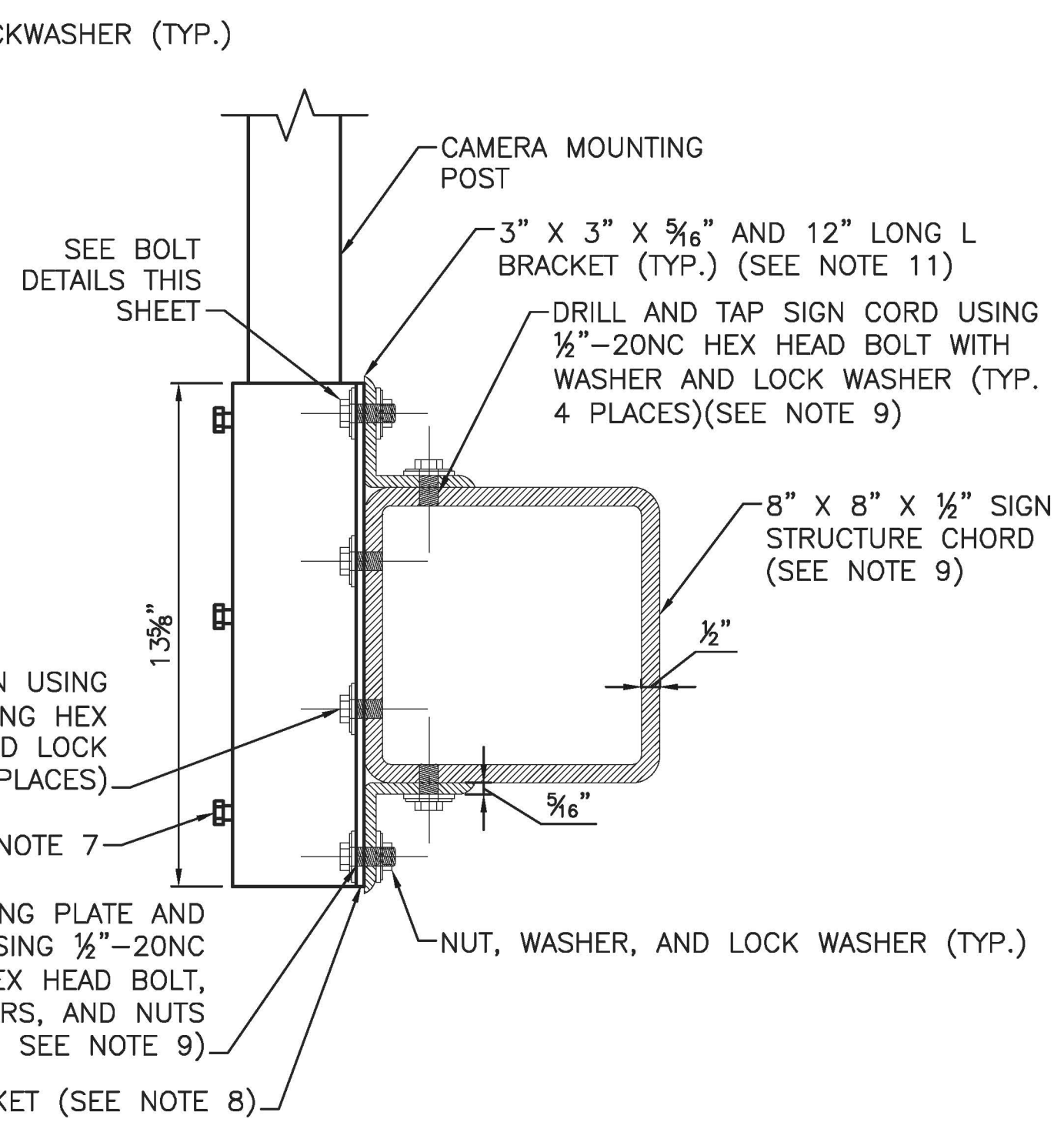
**CCTV CAMERA - LOCATION ON SPAN STRUCTURE**  
SCALE: 1" = 1'-0"



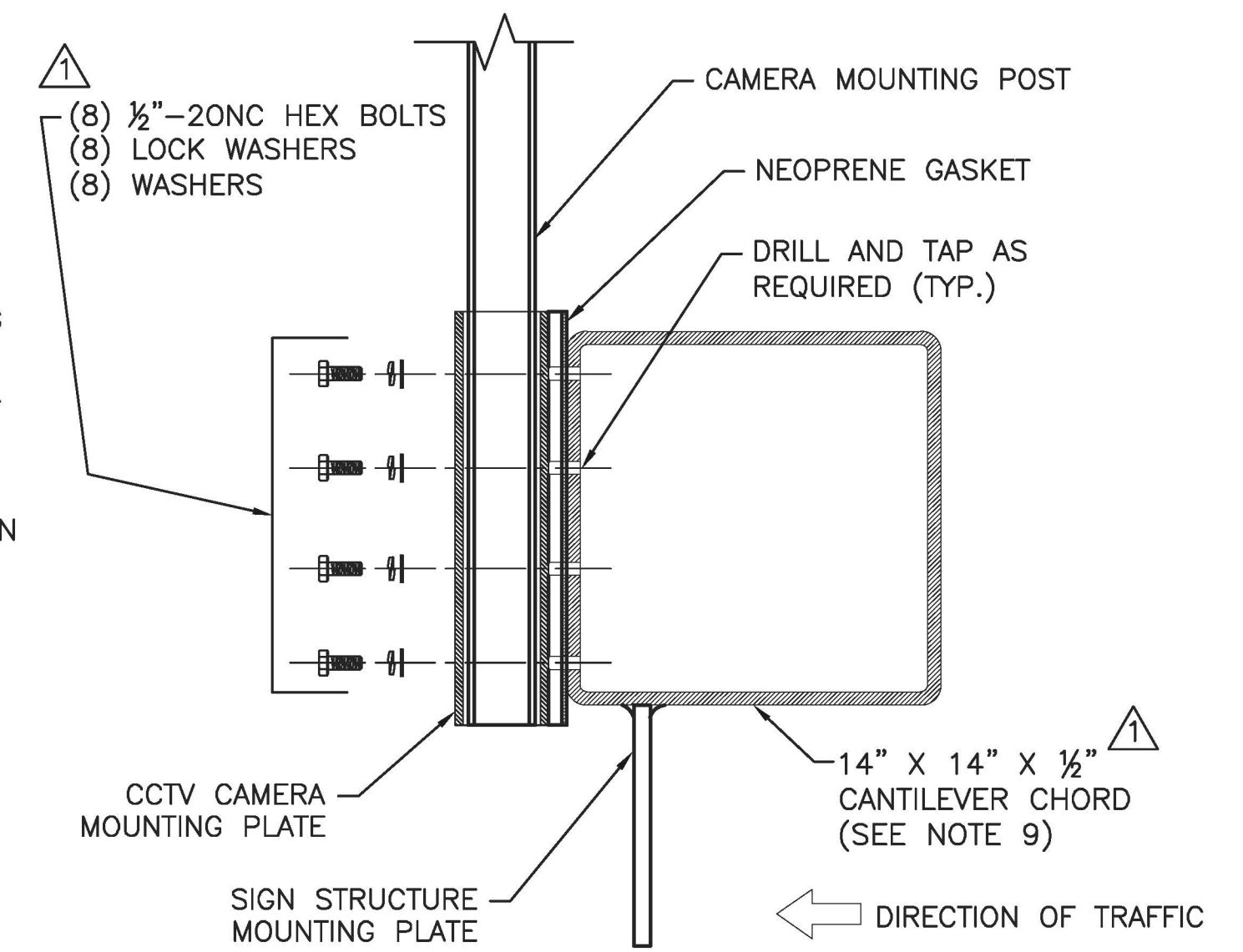
**CCTV CAMERA - PIPE MOUNT**  
SCALE: 1 1/2" = 1' - 0"



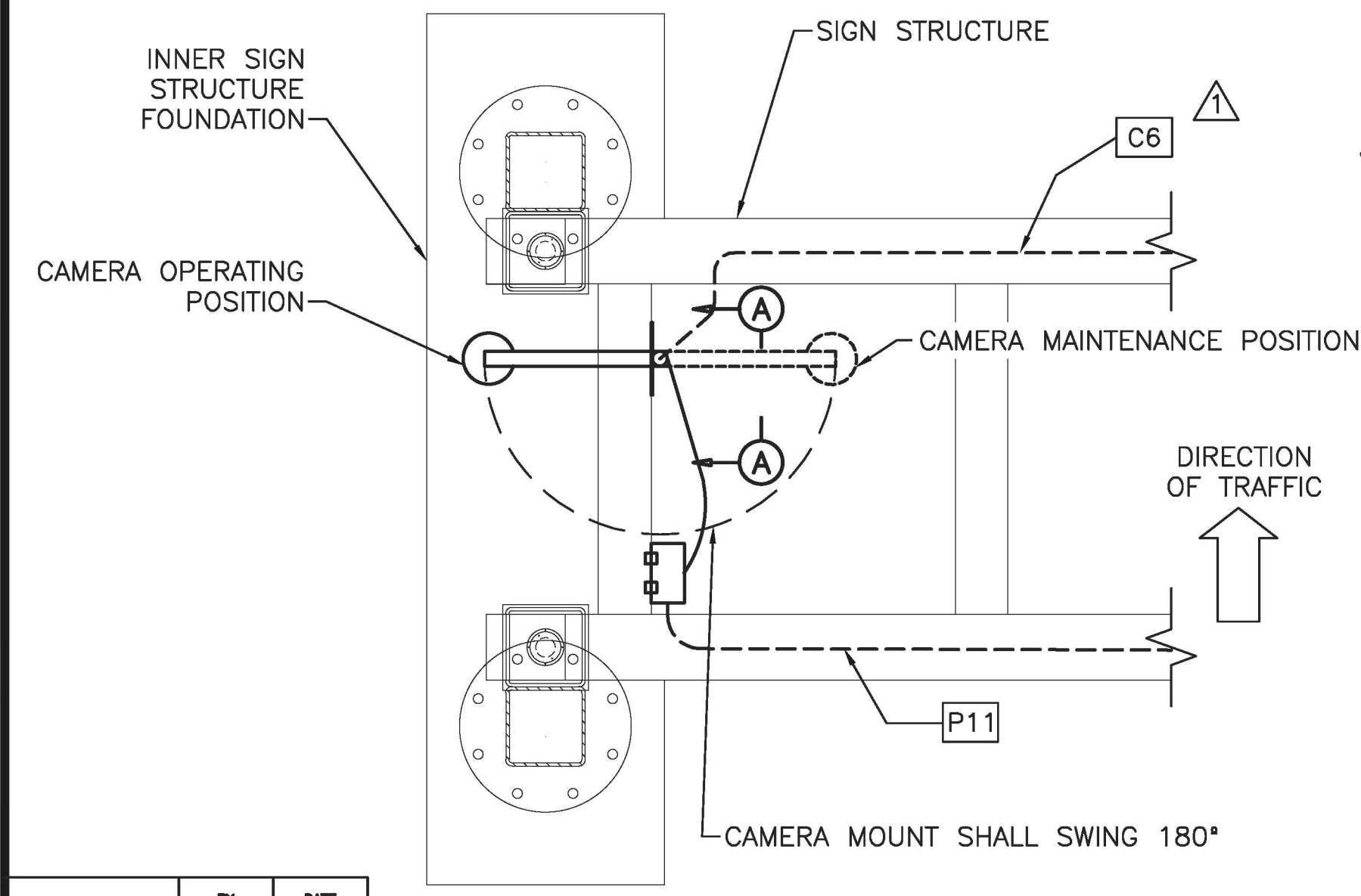
**BOLT DETAILS**  
SCALE: 6" = 1' - 0"



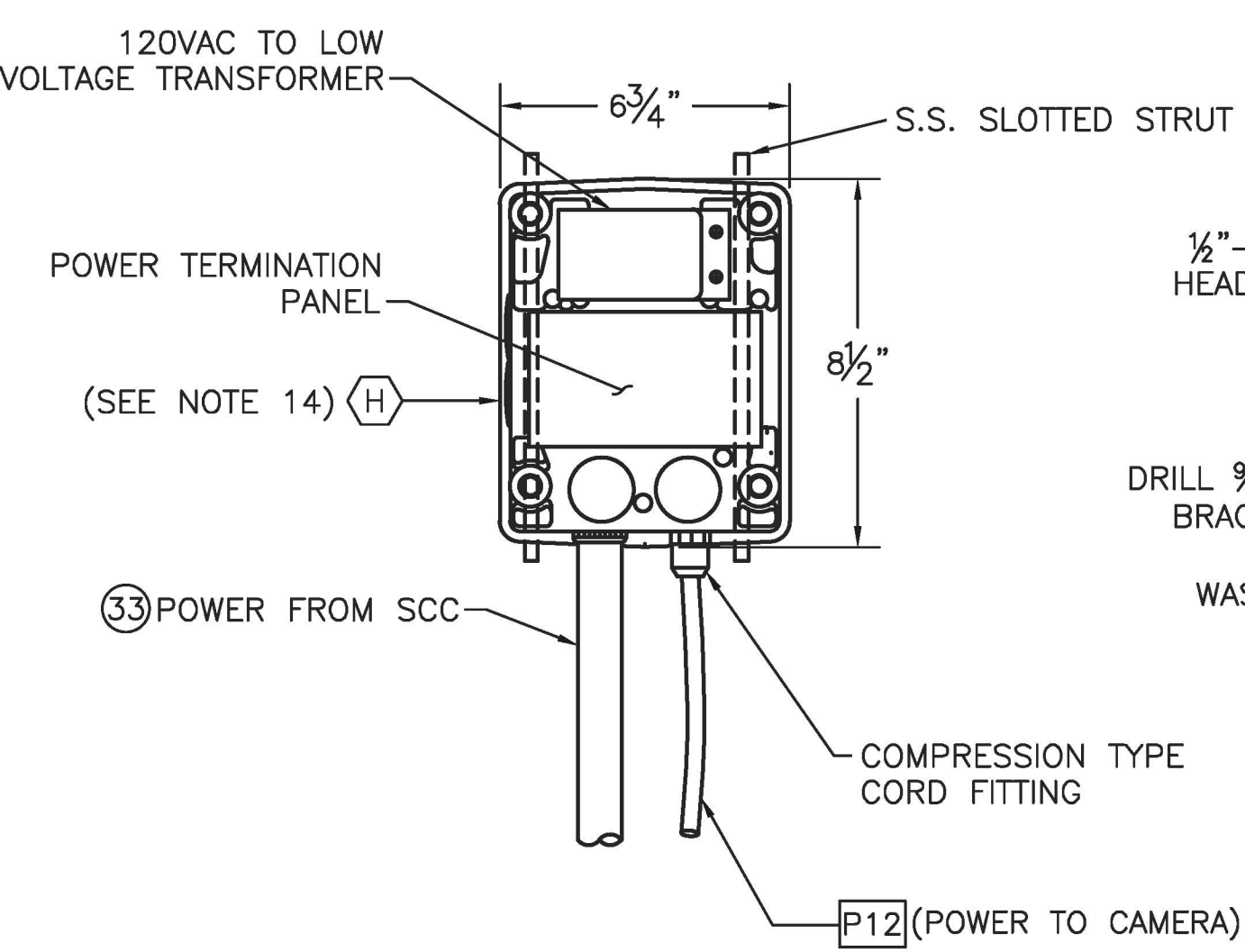
**CCTV CAMERA - MOUNTING DETAIL A**  
SCALE: 1 1/2" = 1' - 0"



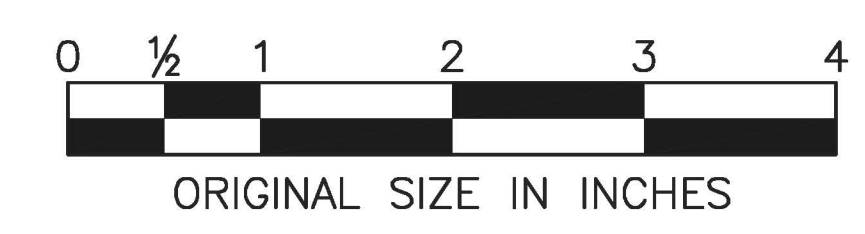
**CCTV CAMERA - CANTILEVER MOUNTING**  
SCALE: 2" = 1' - 0"



**CCTV CAMERA - PLAN**  
SCALE: 1/8" = 1' - 0"



**CCTV CAMERA - REMOTE POWER UNIT**  
SCALE: 3" = 1' - 0"



**NOTES:**

- FOR LEGEND, ABBREVIATIONS, AND CABLE AND CONDUIT SCHEDULES SEE STANDARD DRAWING ITS-01 AND ITS-02.
- THE CCTV CAMERA SHALL BE A DAY/NIGHT COLOR MODEL AND SHALL BE HOUSED IN AN ENVIRONMENTAL SEALED ENCLOSURE AND BE MOUNTED ON A 2 1/2" O.D. MAST WITH QUICK DISCONNECT FOR MAINTENANCE.
- THE CCTV CAMERA SHALL HAVE A PAN-TILT-ZOOM FEATURE.
- THE CCTV CAMERA MOUNT SHALL ALLOW THE CAMERA TO BE LOWERED OR REMOVED WHEN IN ITS MAINTENANCE POSITION.
- THE CCTV CAMERA SHALL BE MOUNTED AT A MINIMUM HEIGHT OF 1'-0" ABOVE THE SIGN STRUCTURE.
- THE CONTRACTOR SHALL POSITION THE CAMERA SUCH THAT BOTH THE INNER AND OUTER ROADWAY ARE VISIBLE WHEN IN THE OPERATING POSITION. IF THE CAMERA VIEW IS OBSTRUCTED BY LOCATING THE CAMERA AS SHOWN ON THESE PLANS, THE CONTRACTOR SHALL COORDINATE WITH THE ENGINEER TO DETERMINE AN ALTERNATE SOLUTION AS APPROVED BY THE AUTHORITY.
- THE CAMERA MOUNT SHALL BE SUPPLIED WITH HARDWARE FROM THE MANUFACTURER TO SECURE THE CAMERA MOUNTING POST INSIDE OF THE SLEEVE ON CAMERA MOUNTING PLATE.
- A 1/4" THICK NEOPRENE PAD SHALL BE INSTALLED BETWEEN THE CAMERA MOUNTING PLATE AND THE SIGN CHORD. IT SHALL BE LARGE ENOUGH TO COVER THE CONTACT SURFACE BETWEEN THE MOUNTING PLATE AND SIGN CHORD.
- BOLTS SECURING THE MOUNTING PLATE SHALL NOT PROTRUDE INSIDE THE SIGN CHORD FURTHER THAN 1/8". SEE BOLT DETAILS ON THIS SHEET.
- MOUNTING HARDWARE FOR SECURING THE CAMERA MOUNT TO THE SIGN STRUCTURE SHALL BE STAINLESS STEEL TYPE 304 ASTM A193 GRADE B8.
- ANGLE BRACKETS FOR SECURING THE CAMERA MOUNT TO THE SIGN STRUCTURE SHALL BE MANUFACTURED IN ACCORDANCE WITH ASTM A36 AND BE HOT DIP GALVANIZED.
- CAMERA ENCLOSURE SHALL BE MOUNTED IN A SIMILAR FASHION AS CAMERA MOUNT.
- WHERE ANALOG CAMERA IS SPECIFIED, CONTRACTOR SHALL INSTALL FLEXIBLE CONDUIT TO HOUSE THE COMMUNICATIONS CABLE.

MADE BY: [unclear] DATE: 08/2010  
 CHECKED BY: EMG DATE: 08/2010  
 SUPERVISED BY: ALB DATE: 08/2010  
 ACAD FILE NAME: NJTA-SD ITS-23.dwg Layout: .Layout1

APP. NO.	DATE	REVISION
1	5/2014	REVISED HARDWARE AND CABLES
C	10/2013	CONFORMED DRAWING

NEW JERSEY TURNPIKE AUTHORITY  
**NEW JERSEY TURNPIKE**  
 ITSS CCTV  
 HNTB 9 ENTIN ROAD, SUITE 202, PARSIPPANY, NJ 07054 - COA# 24GA28000700  
**ANTHONY L. BARTELLO**  
 New Jersey Professional Engineer License No. GE 45842  
**STANDARD DRAWING ITS-23**