

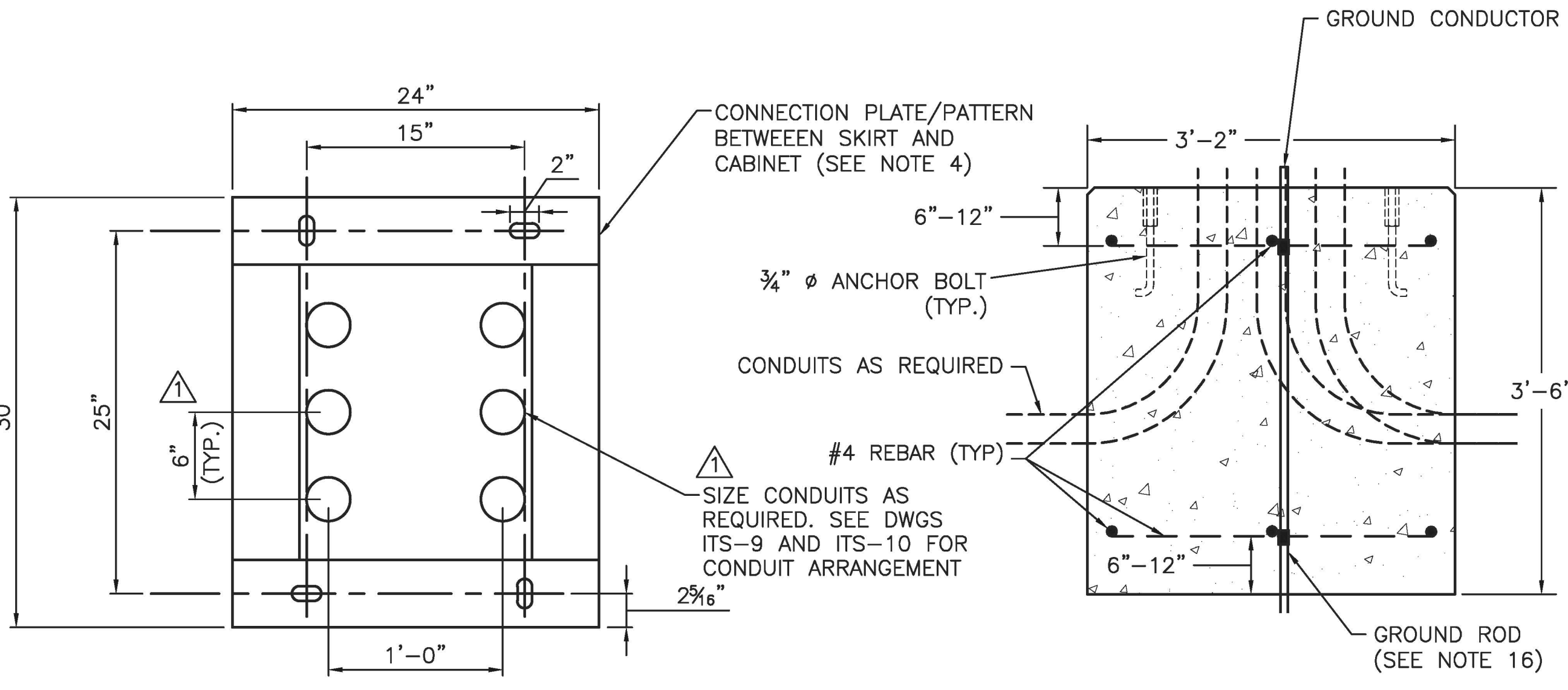
- NOTES:**
- FOR LEGEND, ABBREVIATIONS, AND CABLE AND CONDUIT SCHEDULES SEE ITS-01 AND ITS-02.
 - THE SCC WITH SKIRT SHALL BE FURNISHED BY OTHERS AND INSTALLED BY THE CONTRACTOR. IT SHALL BE A FREE STANDING DOUBLE DOOR, VENTED, .125" THICK ALUMINUM CABINET WITH AN INTERNAL 19" EQUIPMENT RACK THAT STANDS AT LEAST 5'-6" HIGH.
 - THE 12" CABINET SKIRT SHALL BE ATTACHED TO THE SCC BY THE CONTRACTOR PER THE CABINET MANUFACTURER'S RECOMMENDATIONS WHERE REQUIRED.
 - THE CONFIGURATION AND DETAILS OF THE CABINET ANCHOR BOLT PATTERN SHALL BE AS PROVIDED BY THE CABINET MANUFACTURER.
 - CONDUITS ENTERING THE BOTTOM OF THE SCC SHALL BE STUBBED A MINIMUM OF 3" ABOVE THE CONCRETE FOUNDATION.
 - SEE THE CONTRACT PLANS AND OTHER ITS DRAWINGS FOR POSITIONING THE SCC.
 - UNLESS DIRECTED OTHERWISE, THE EQUIPMENT INSTALLED IN THE SCC SHALL BE AS SHOWN ON THIS PLAN.
 - THE TERMINATION OF POWER AND COMMUNICATION CABLES RELATED TO ITSS EQUIPMENT IN THE SCC SHALL BE COMPLETED BY THE CONTRACTOR.
 - SCC(S) MAY BE USED FOR MULTIPLE FUNCTIONS AND PURPOSES. THE SCC SHOWN ON THIS SHEET IS CONFIGURED FOR AN ITSS INSTALLATION. THE SCC MAY HAVE HARDWARE REMOVED OR ADDED AS REQUIRED ON THE PLANS.
 - APPLY A SEAL OF APPROVED SILICONE AROUND THE BASE OF THE CABINET ENCLOSURE AND THE JOINT BETWEEN THE CABINET BASE AND CABINET.
 - CONDUIT ENDS SHALL BE SEALED WITH AN APPROVED RODENT BLOCKER MATERIAL AS DESCRIBED IN THE SPECIFICATIONS AFTER CABLE AND WIRING INSTALLATION.
 - WHERE A SEPARATE EQUIPMENT GROUNDING CONDUCTOR IS NOT SHOWN ON THE CONTRACT DRAWINGS, PROVIDE AN EQUIPMENT GROUNDING CONDUCTOR SIZED IN ACCORDANCE WITH THE NEC.
 - GROUND TERMINAL KIT SHALL BE FURNISHED AND INSTALLED BY CONTRACTOR. GROUND TERMINAL KIT SHALL BE BY SQUARE-D PART # PK12GTA. CONNECT GROUND ROD WITH # 6 AWG GROUND WIRE.
 - ANCHOR BOLT ASSEMBLY SHALL BE 1/2" FOR ITSS TRANSFORMER MOUNTING.
 - SCC FOUNDATION SHALL BE CAST-IN-PLACE.
 - GROUND ROD SHALL BE INSTALLED INSIDE THE CONCRETE FOUNDATION AND ATTACHED TO # 4 REBAR AT TWO PLACES, MINIMUM 12" APART. GROUND ROD SHALL BE ATTACHED TO REBAR USING COMPRESSION GROUND TAP CONNECTOR, AS MANUFACTURED BY BLACKBURN OR APPROVED EQUAL.
 - ITS TRANSFORMER (WHERE INSTALLED) GROUND ROD, ITS POWER EQUIPMENT CABINET (WHERE INSTALLED) GROUND ROD, AND ADJACENT JUNCTION BOX GROUND ROD SHALL BE BONDED TOGETHER TO SCC GROUND ROD AT ALL ITS EQUIPMENT PLATFORM TYPES.

SCC - FRONT ELEVATION
SCALE: 1 1/2" = 1'-0"

SCC - FRONT RACK ELEVATION
SCALE: 1 1/2" = 1'-0"

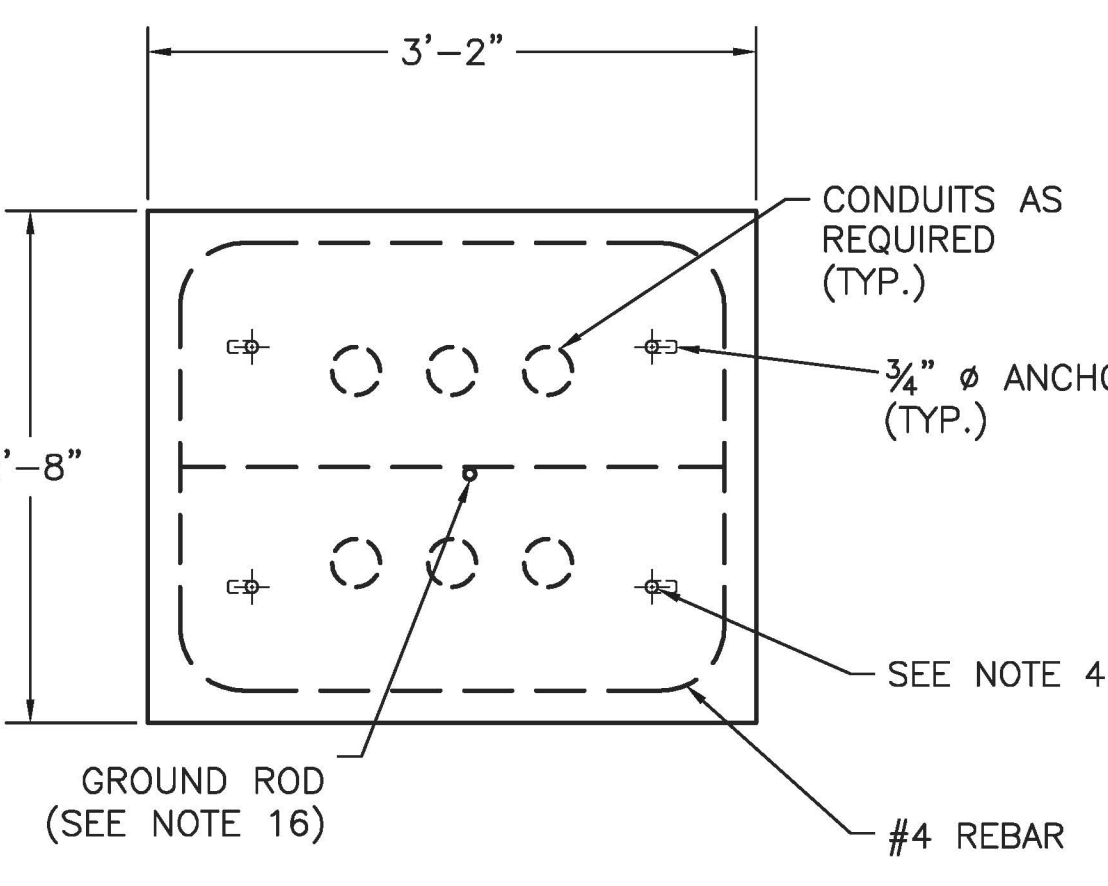
SCC - SIDE ELEVATION
SCALE: 1 1/2" = 1'-0"

SCC - REAR RACK ELEVATION
SCALE: 1 1/2" = 1'-0"

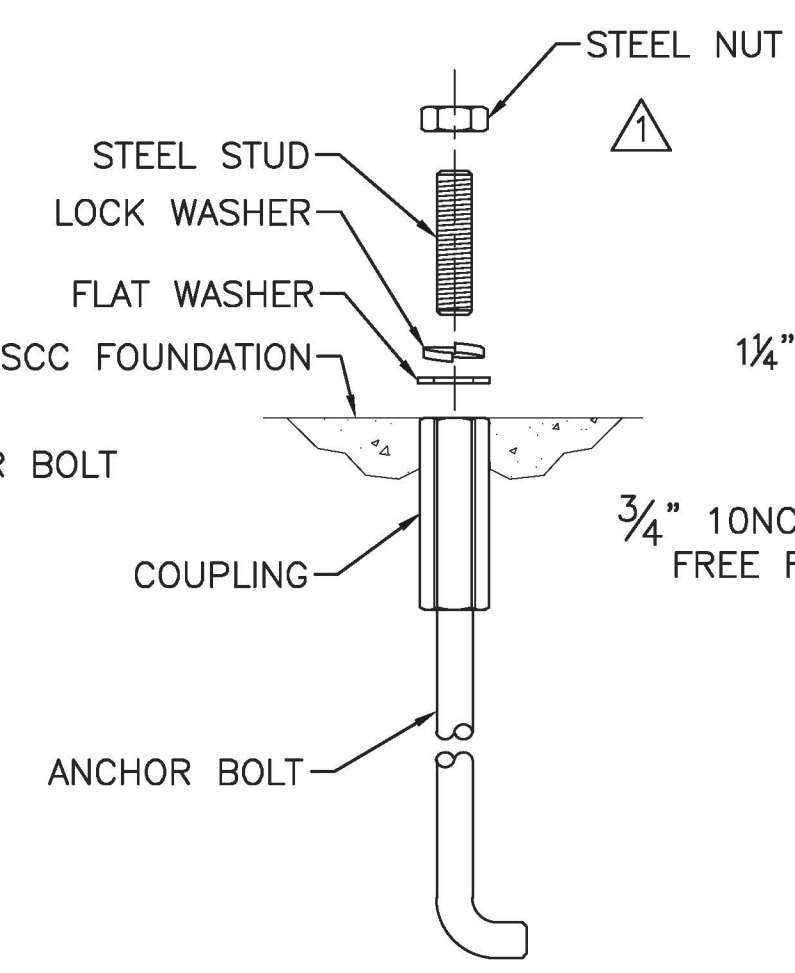


SCC - SECTION A-A
SCALE: 1 1/2" = 1'-0"
(SEE NOTE 4)

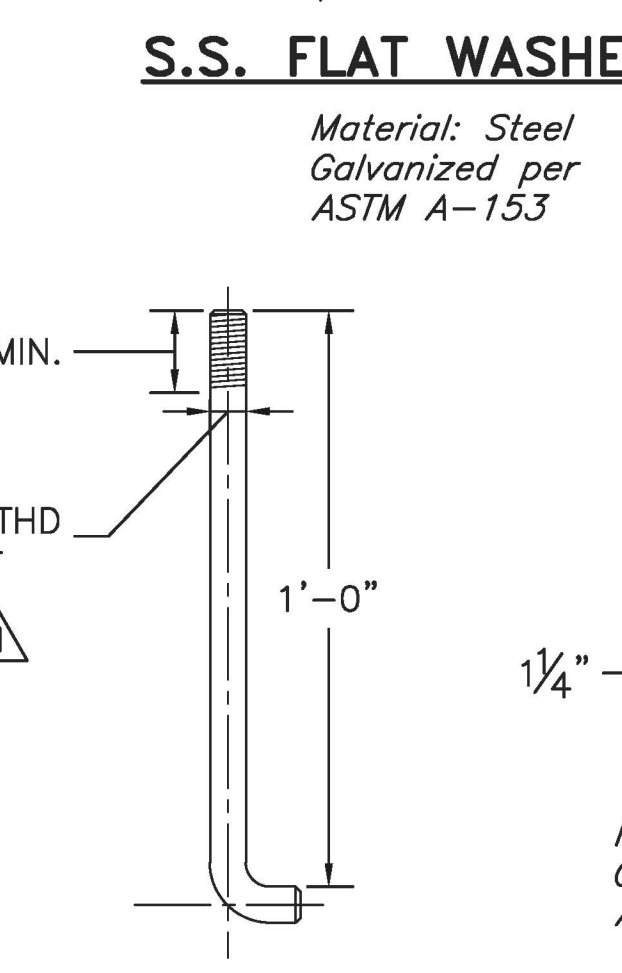
SCC - FOUNDATION ELEVATION
SCALE: 1" = 1'-0"



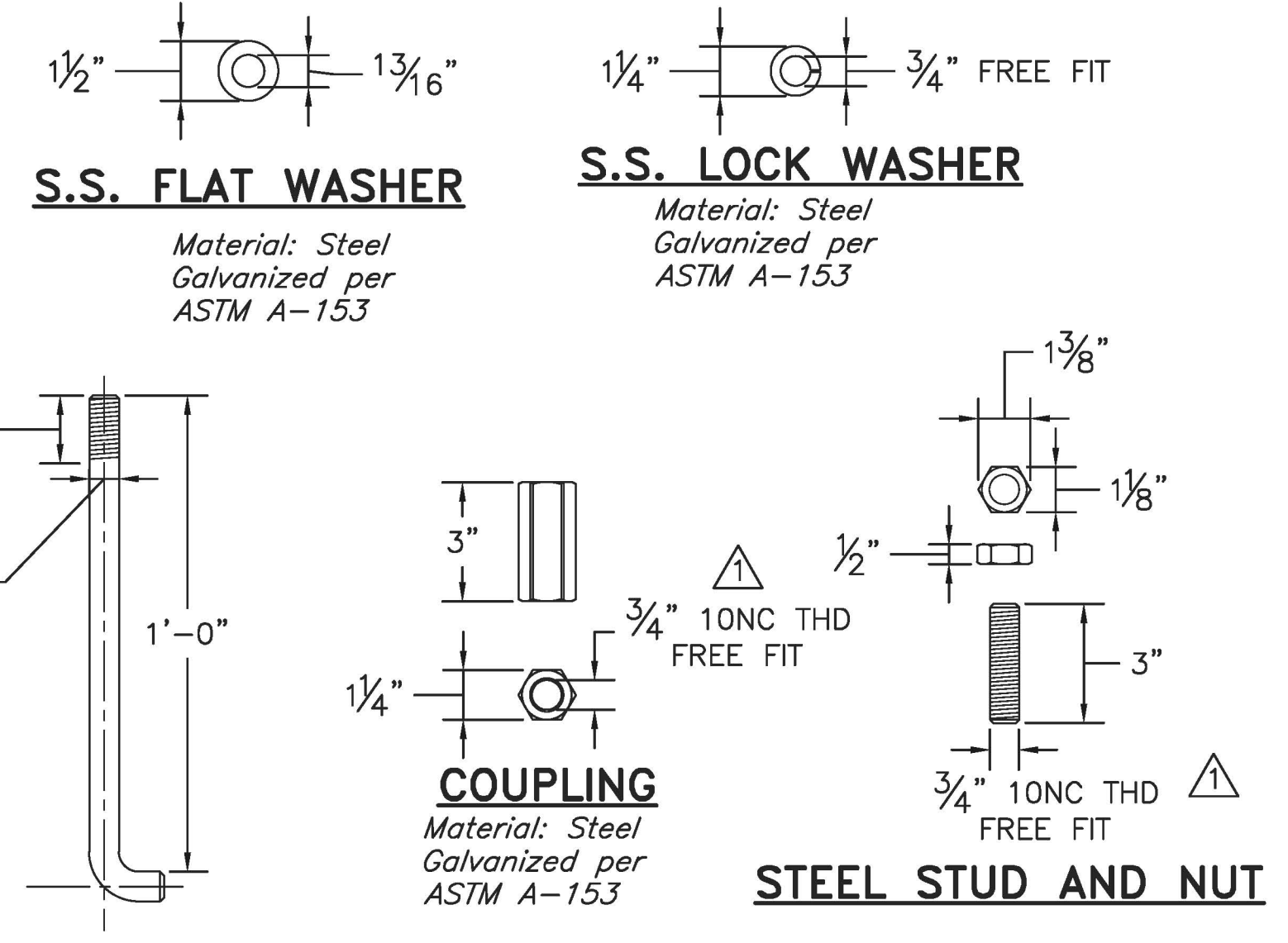
SCC - FOUNDATION PLAN
SCALE: 1" = 1'-0"



ANCHOR BOLT ASSEMBLY
SCALE: 3" = 1'-0"
(SEE NOTE 14)



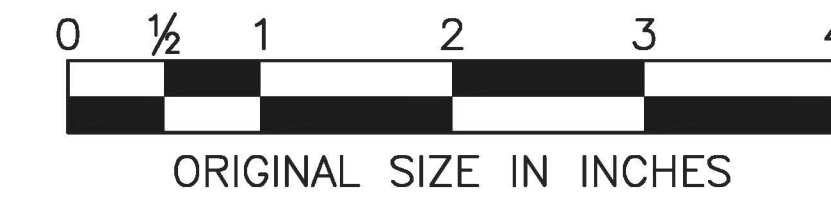
ANCHOR BOLT
Material: ASTM A-307 Steel with ASTM 563 Nuts and ASTM F436



HNTB INC. 9 ENTIN ROAD, SUITE 202, PARSIPPANY, NJ 07054 - COA# 24G428000700
 DATE: 08/2010 2:25:58 PM
 LUT: SAUD SAUD, May 22, 2011 - 17:28:01
 HNTB INC. 9 ENTIN ROAD, SUITE 202, PARSIPPANY, NJ 07054 - COA# 24G428000700

	BY	DATE
MADE	EMG	08/2010
TRACED	MDC	08/2010
CHECKED	EMG	08/2010
SUPERVISED	ALB	08/2010

ACAD FILE NAME: NJTA-SD ITS-22.dwg Layout: .Layout1



APP. NO.	DATE	REVISION
1	5/2014	REVISED ANCHOR BOLTS AND CONDUITS
C	10/2013	CONFORMED DRAWING

NEW JERSEY TURNPIKE AUTHORITY
NEW JERSEY TURNPIKE
 ITSS SYSTEMS CONTROL CABINET

HNTB 9 ENTIN ROAD, SUITE 202, PARSIPPANY, NJ 07054 - COA# 24G428000700
ANTHONY L. BARTELLO
 New Jersey Professional Engineer License No. GE 46842

STANDARD DRAWING ITS-22