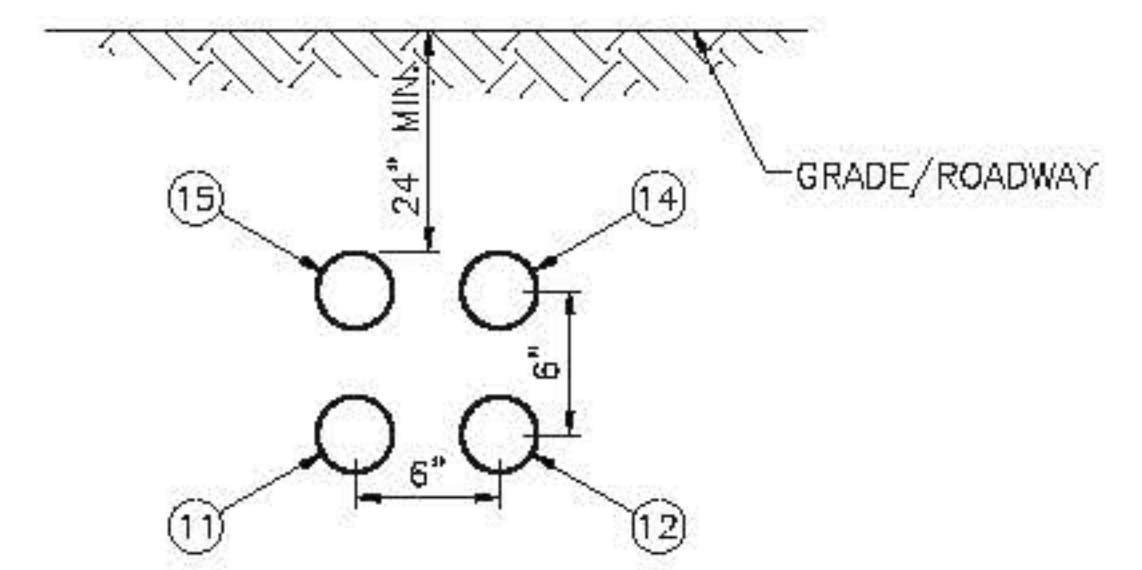


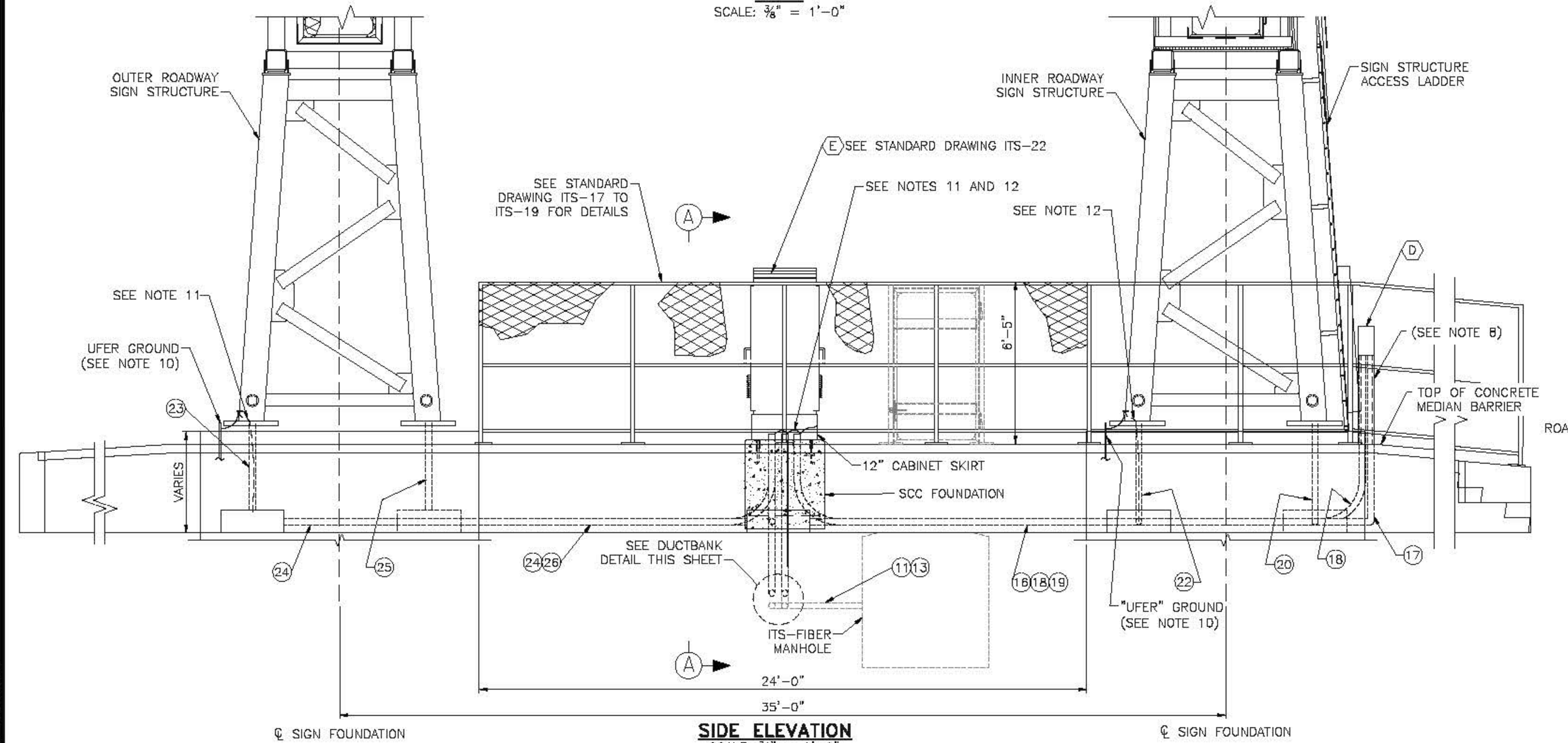
PLAN
SCALE: 3/8" = 1'-0"

NOTES:

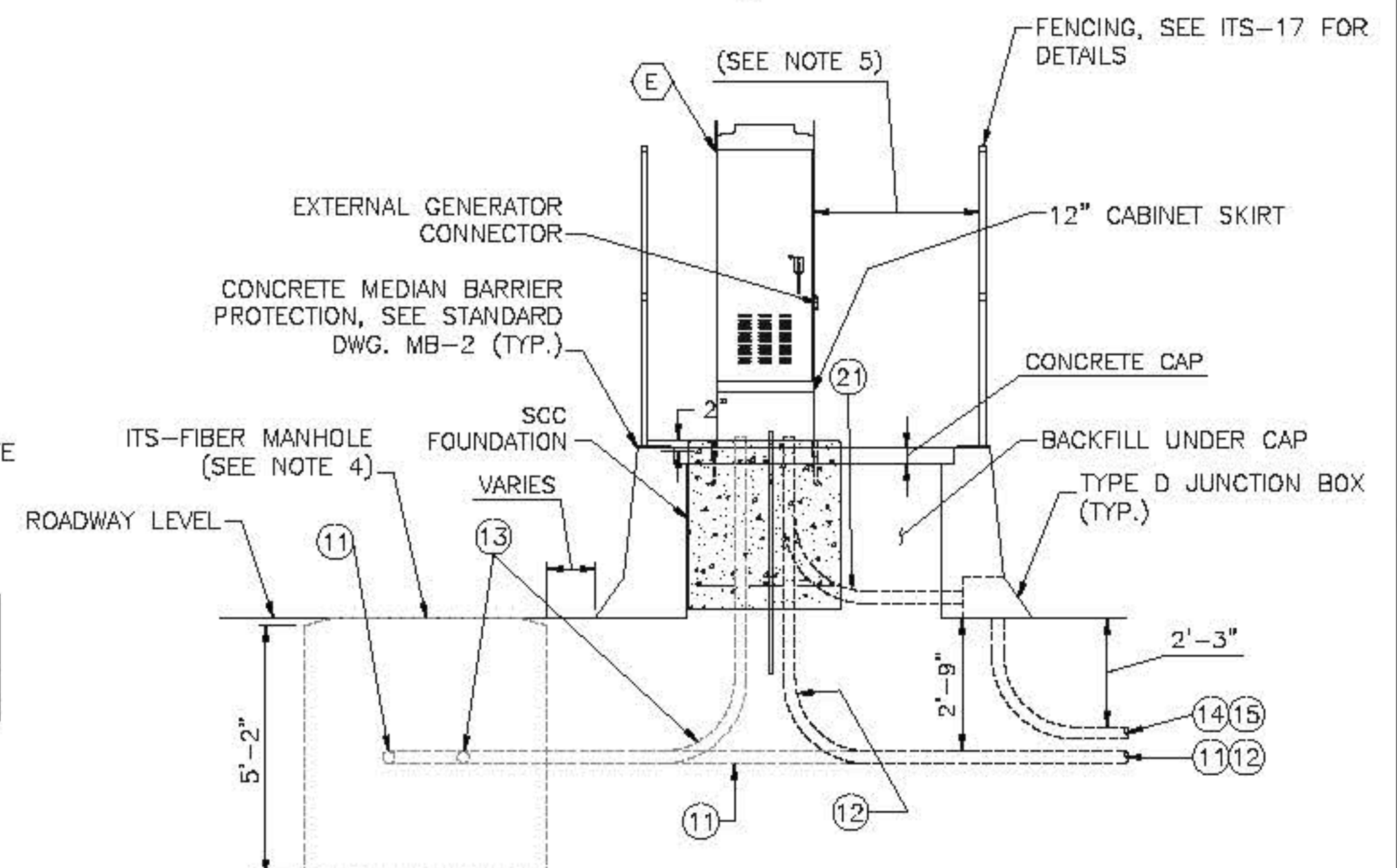
- FOR LEGEND, ABBREVIATIONS, AND CABLE AND CONDUIT SCHEDULES SEE STANDARD DRAWINGS ITS-01 AND ITS-05.
- SEE ELECTRICAL STANDARD DRAWING E-14 FOR JUNCTION BOX TYPE D DETAILS.
- THE MINIMUM DEPTH OF UNDERGROUND CONDUITS SHALL BE 24" FROM GRADE.
- CONDUITS 11 AND 13 SHALL HAVE THEIR ROUTES MODIFIED DEPENDING ON THE LOCATION OF THE ITS-FIBER MANHOLE. THE LOCATION OF THE MANHOLE IN RELATIONSHIP TO THE SCC WILL VARY FROM SITE TO SITE.
- THE SCC SHALL BE MOUNTED SUCH THAT THERE IS A MINIMUM OF 3' WORKING CLEARANCE BETWEEN IT AND THE FENCE ON ONE SIDE.
- AT A MINIMUM, A SPARE PULL CORD SHALL BE INSTALLED WITH ALL CONDUITS.
- INSTALLATION OF MANHOLE NOT TYPICAL FOR ALL INSTALLATIONS. SEE STANDARD DRAWING ITS-06 AND ITS-17 AS WELL AS THE CONTRACT PLANS FOR MORE INFORMATION.
- CIRCUIT DISCONNECT SHALL BE MOUNTED ON C-CHANNEL OR APPROVED EQUAL.
- WORK THIS DRAWING WITH STANDARD DRAWINGS ITS-17 TO ITS-19.
- SEE STANDARD DRAWING ITS-16 FOR PEDESTAL UFER GROUND DETAIL.
- #4 AWG GREEN INSULATED GROUND CONDUCTOR SHALL BE INSTALLED INSIDE CONDUITS (16) AND (22). ONE END OF THE GROUND CONDUCTOR SHALL BE BONDED TO THE SCC GROUND ROD AND THE OTHER END OF THE CONDUIT SHALL BE TAPPED INSIDE THE SIGN STRUCTURE LEG.
- #4 AWG GREEN INSULATED GROUND CONDUCTOR SHALL BE INSTALLED INSIDE CONDUITS (24) AND (23). ONE END OF THE GROUND CONDUCTOR SHALL BE BONDED TO THE SCC GROUND ROD AND THE OTHER END OF THE CONDUIT SHALL BE TAPPED INSIDE THE SIGN STRUCTURE LEG.



DUCTBANK DETAIL
SCALE: 1 1/2" = 1'-0"

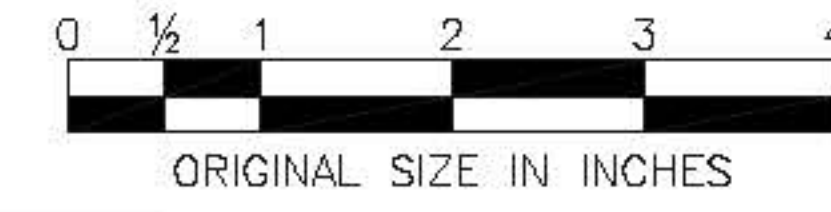


SIDE ELEVATION
SCALE: 3/8" = 1'-0"



SECTION A-A
SCALE: 3/8" = 1'-0"

	BY	DATE
MADE	EMG	08/2010
TRACED	MDC	08/2010
CHECKED	EMG	08/2010
SUPERVISED	ALB	08/2010



APP. NO.	DATE	REVISION
C	10/2013	CONFORMED DRAWING

NEW JERSEY TURNPIKE AUTHORITY
NEW JERSEY TURNPIKE
VMS EQUIPMENT
MEDIAN - 4

HNTB 9 ENVIN ROAD, SUITE 202, PARLISHPANY, NJ 07054 - CO# 24628000700
ANTHONY L. BARTELLO
Professional Engineer License No. CE 40892

STANDARD DRAWING
ITS-20