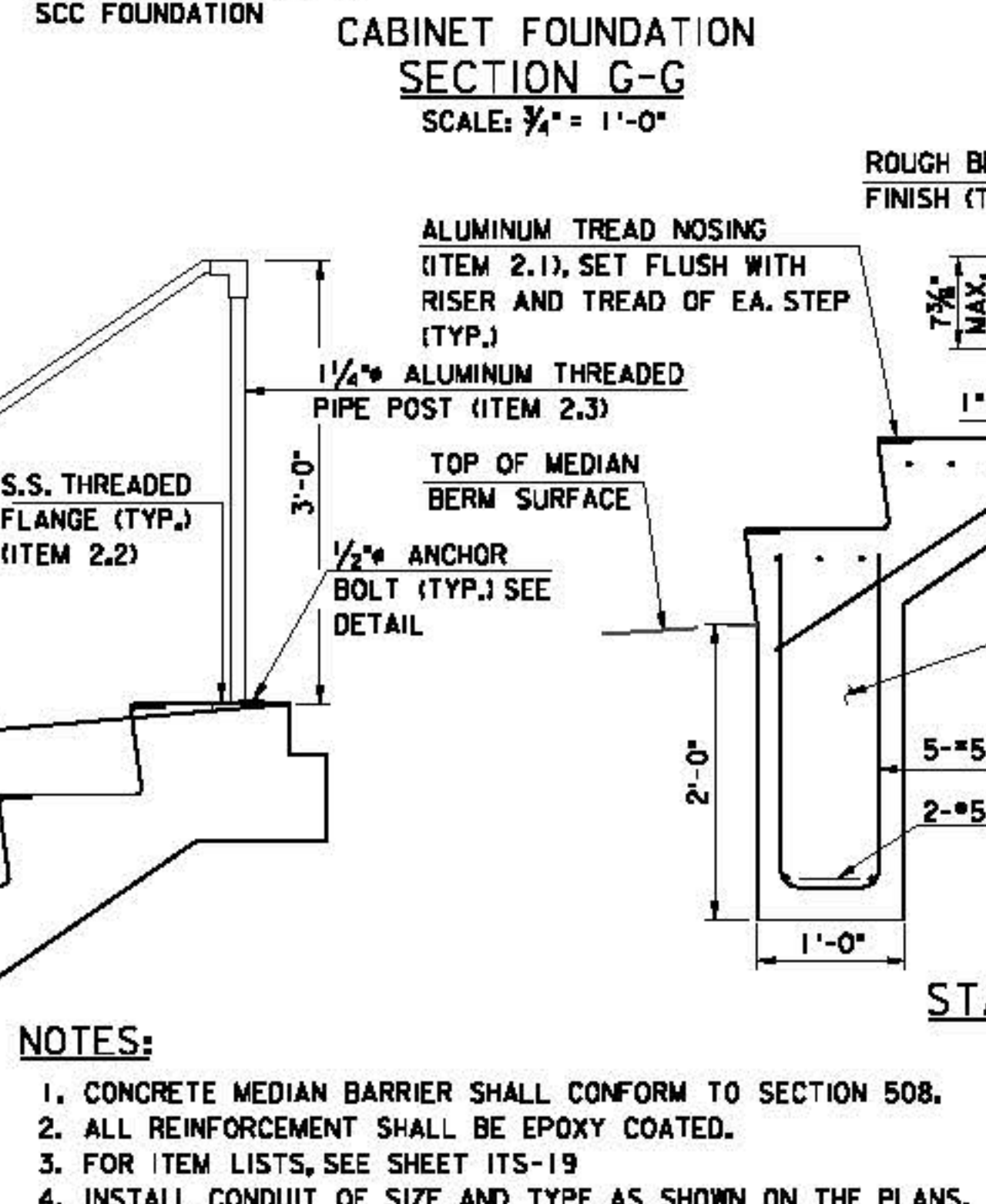
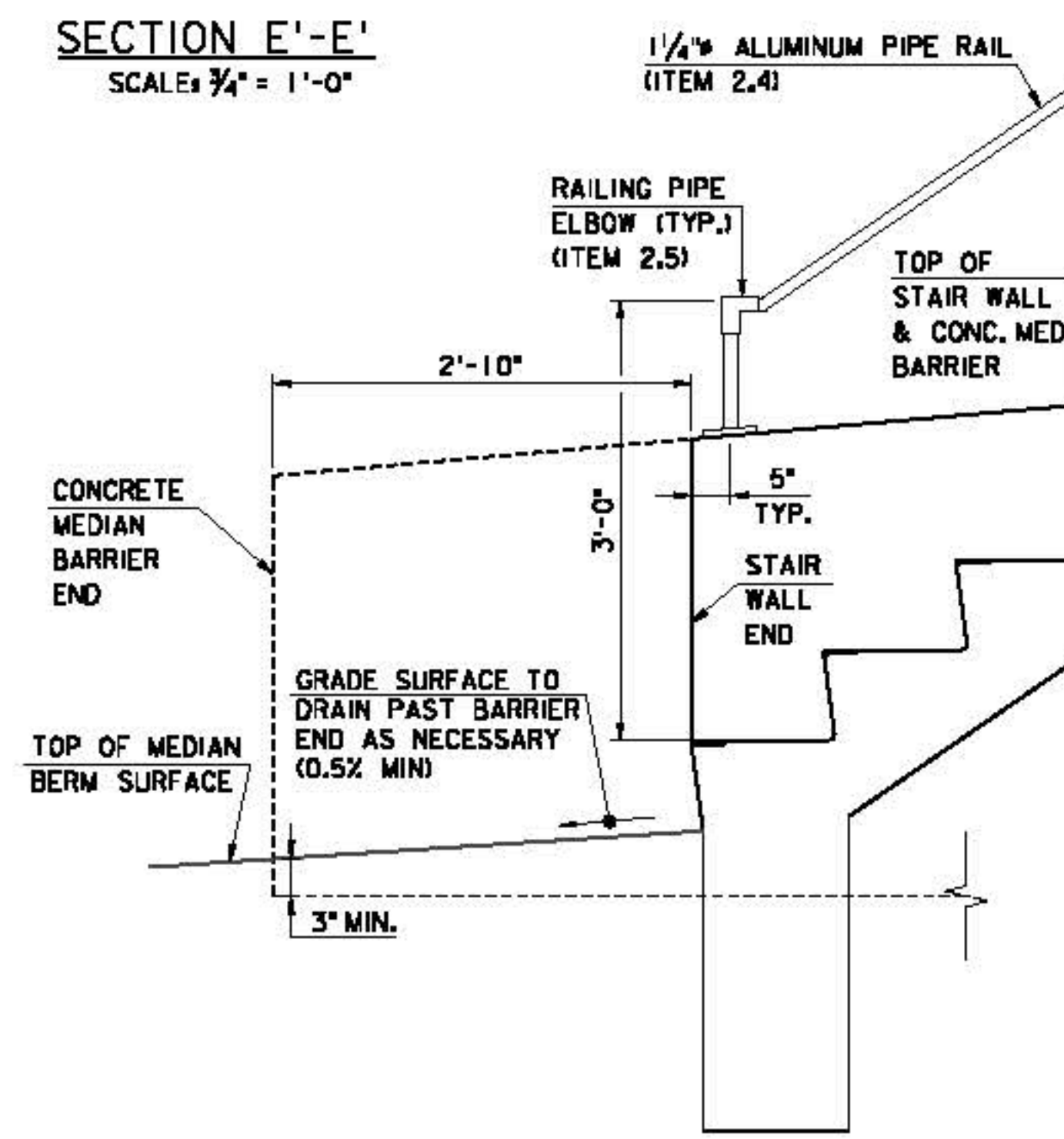
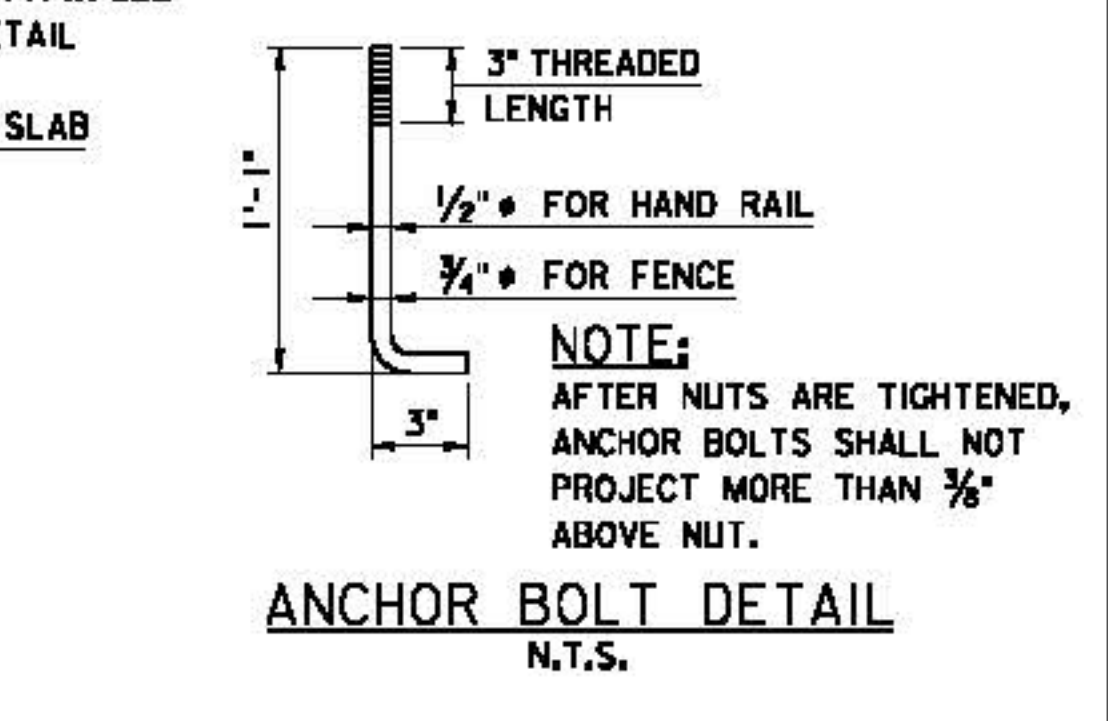
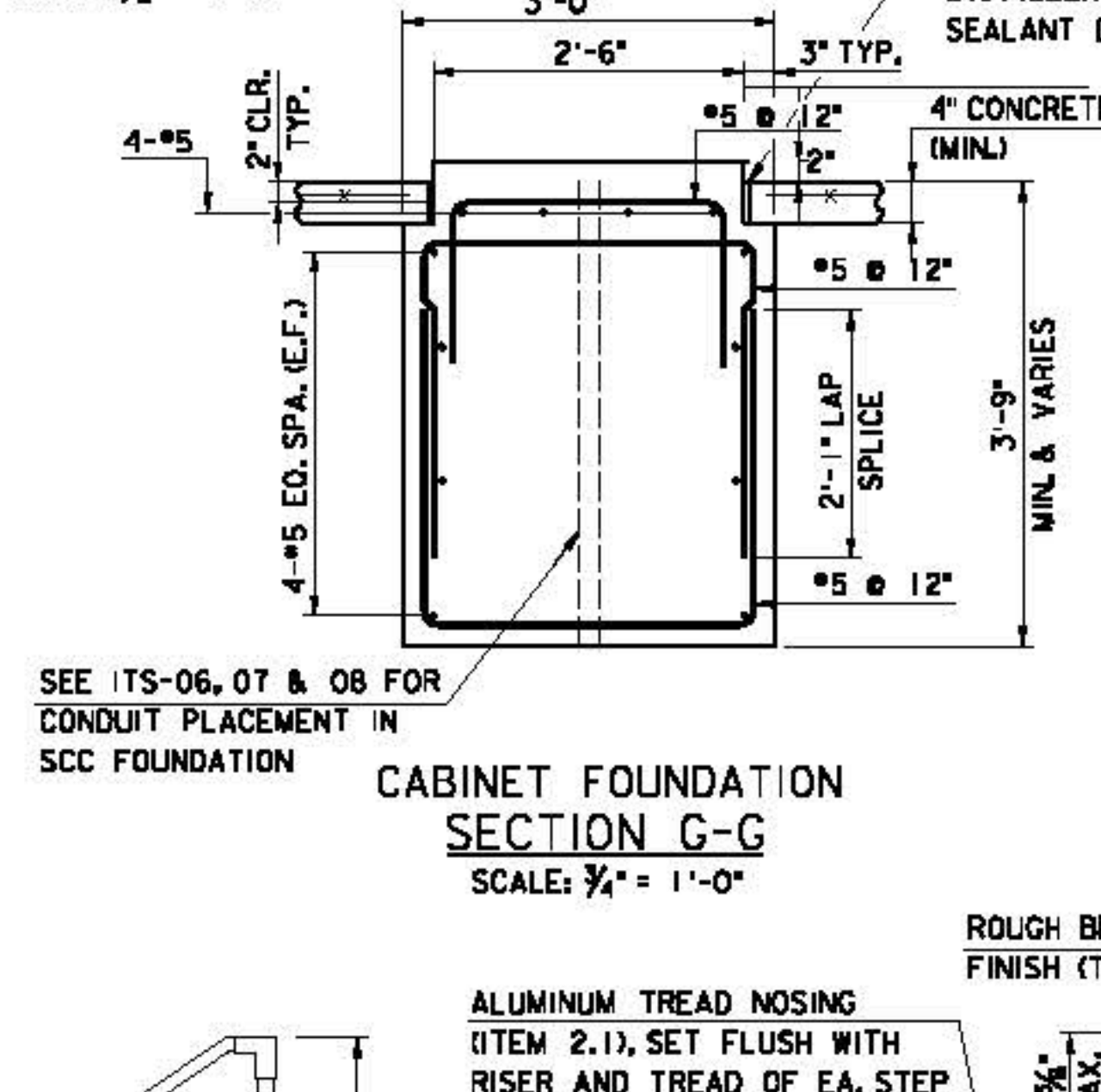
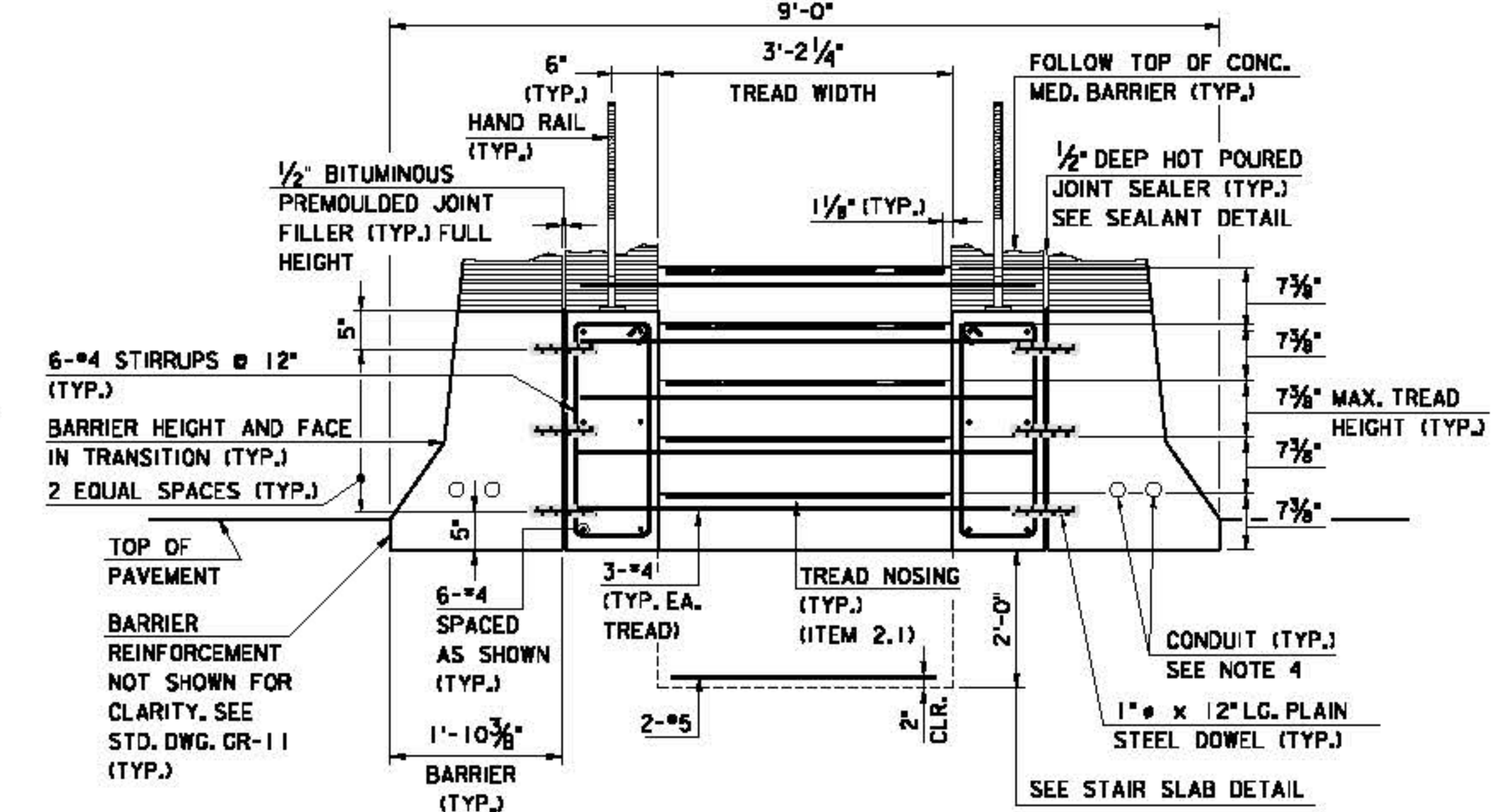
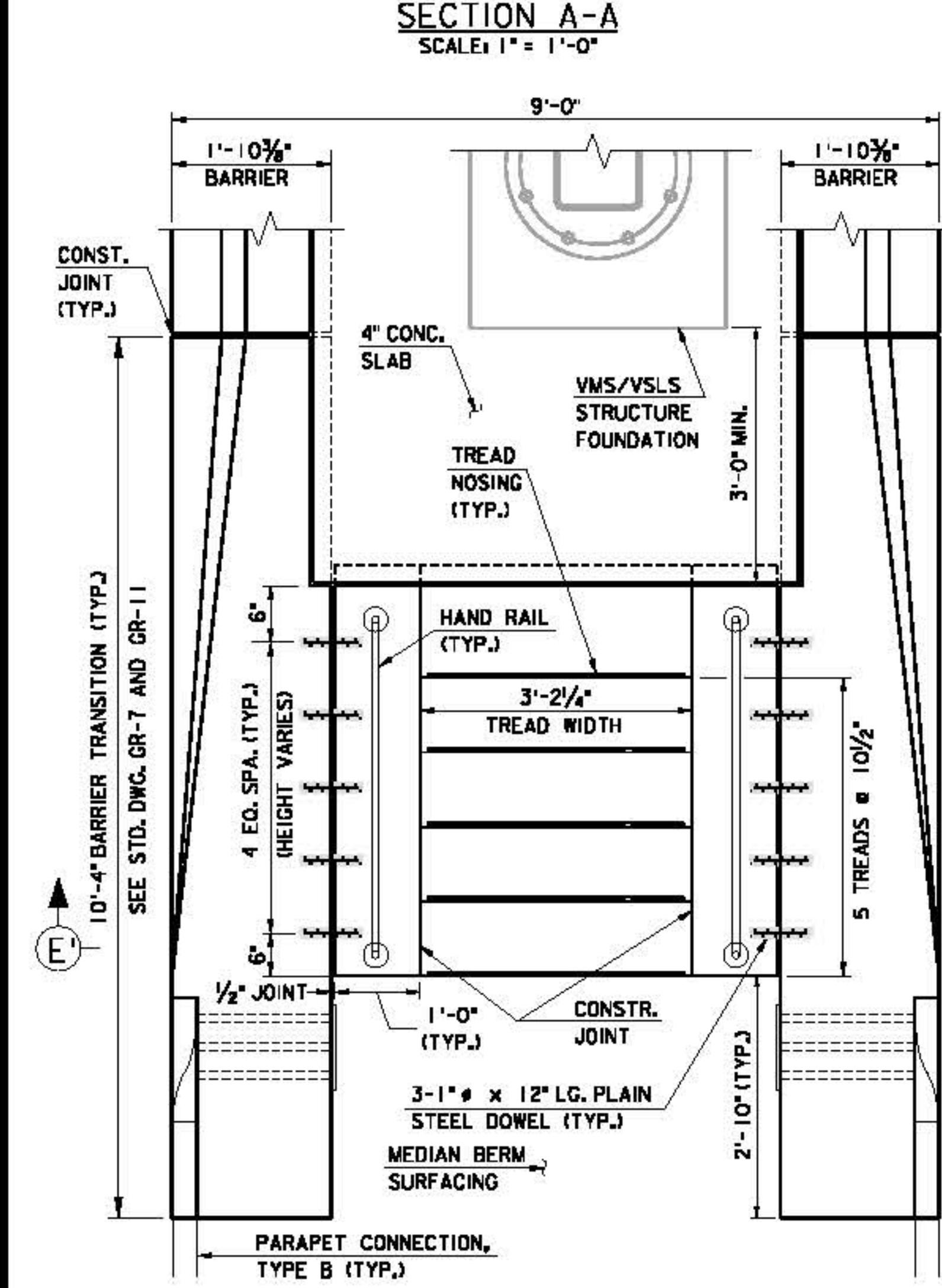
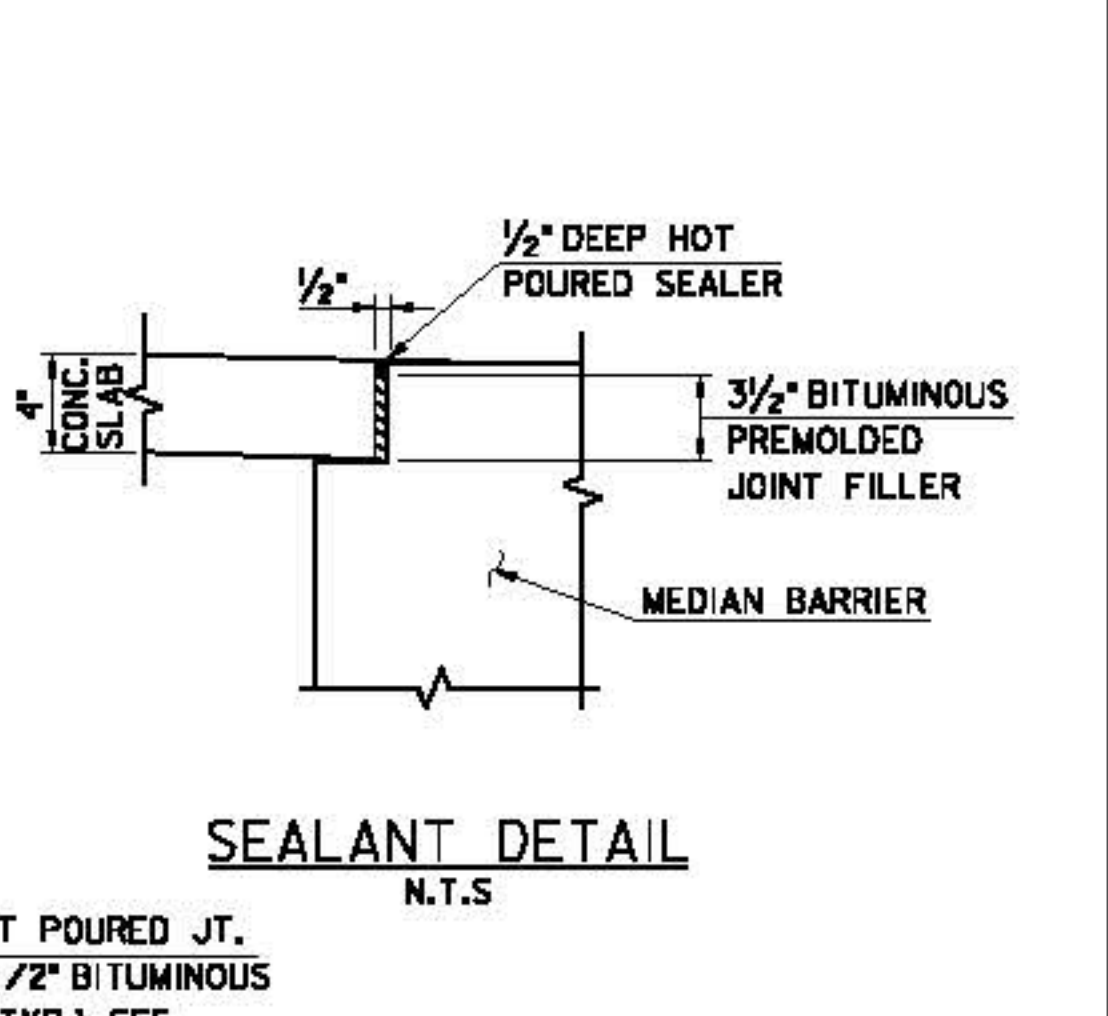
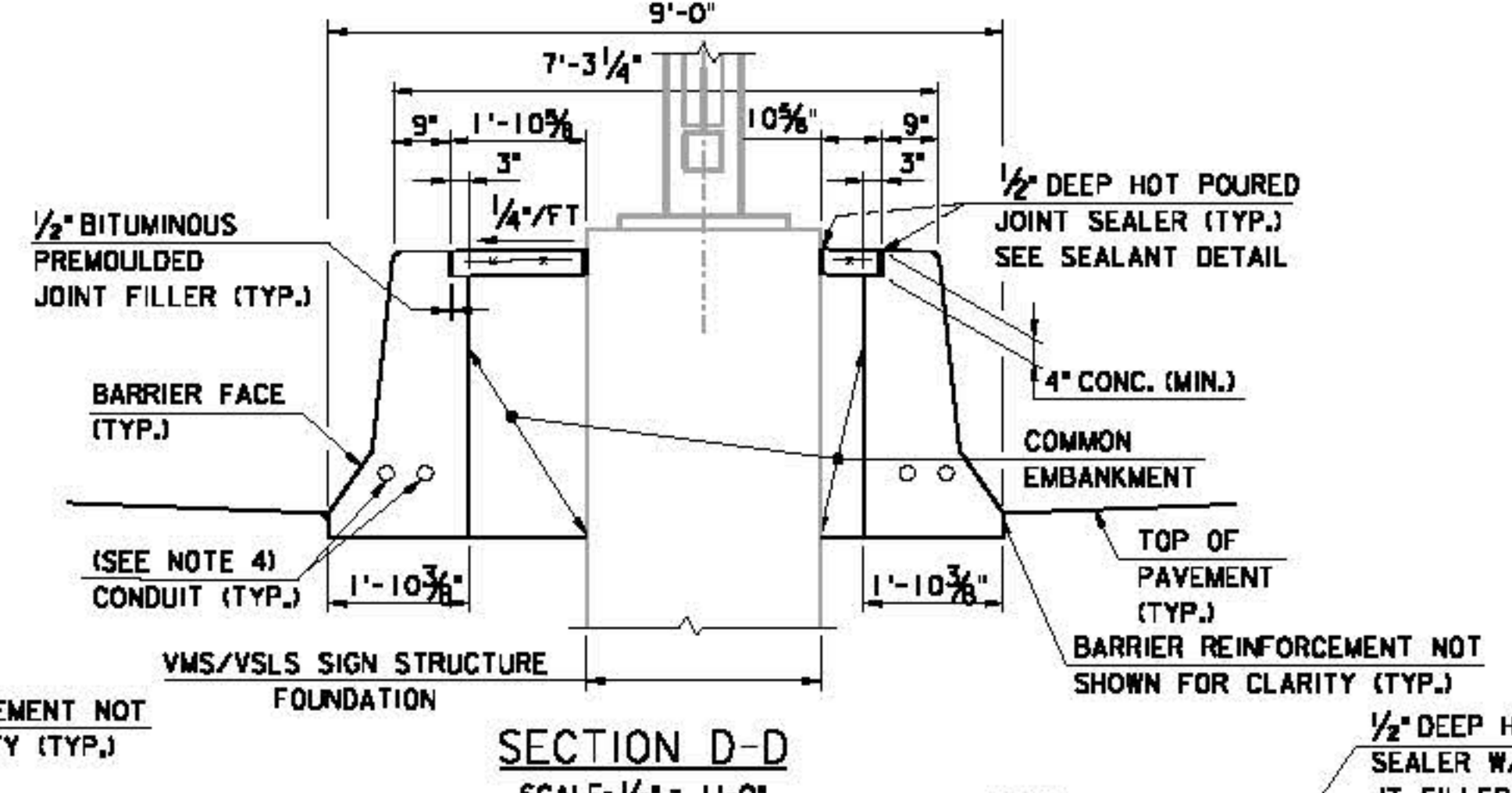
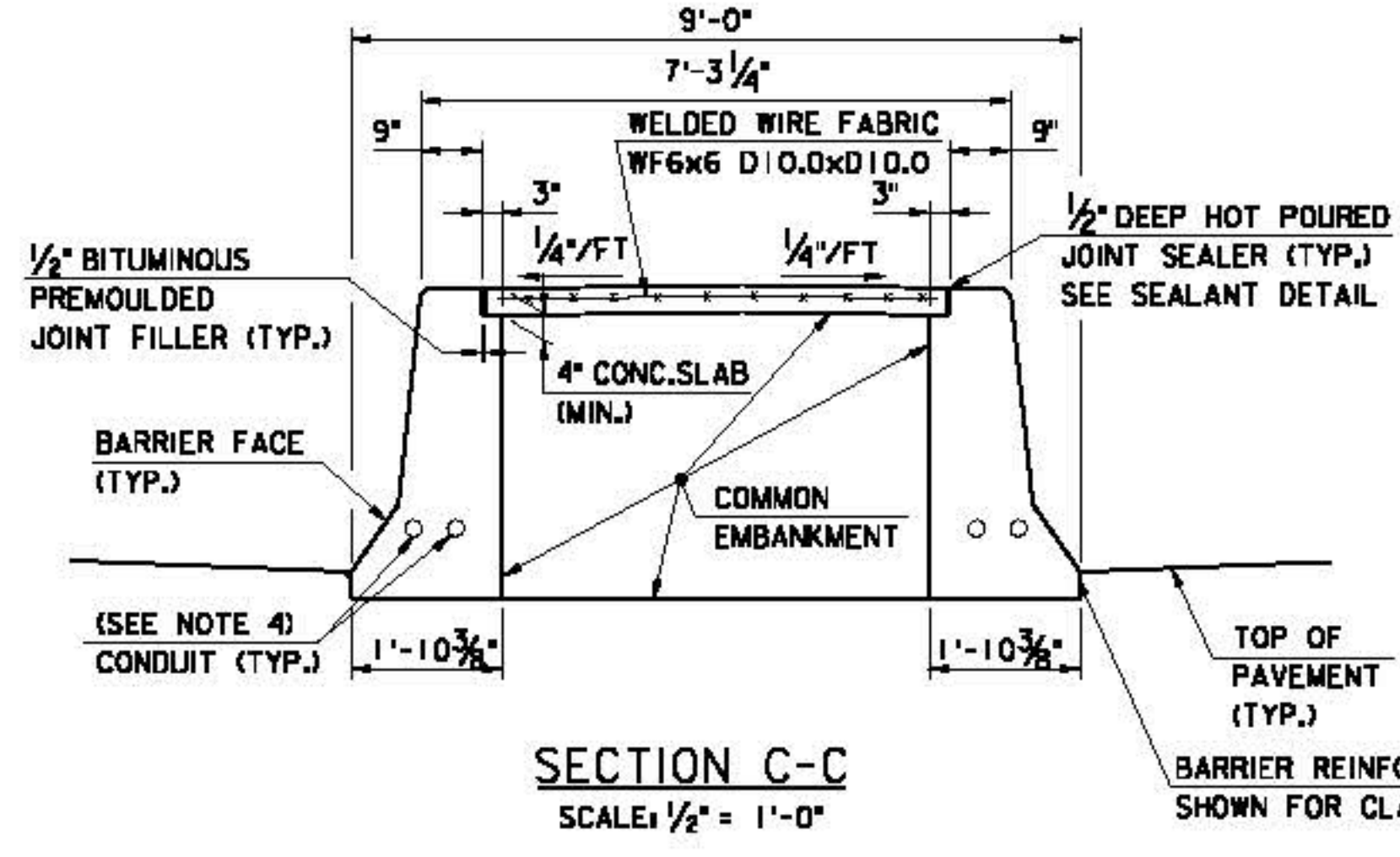
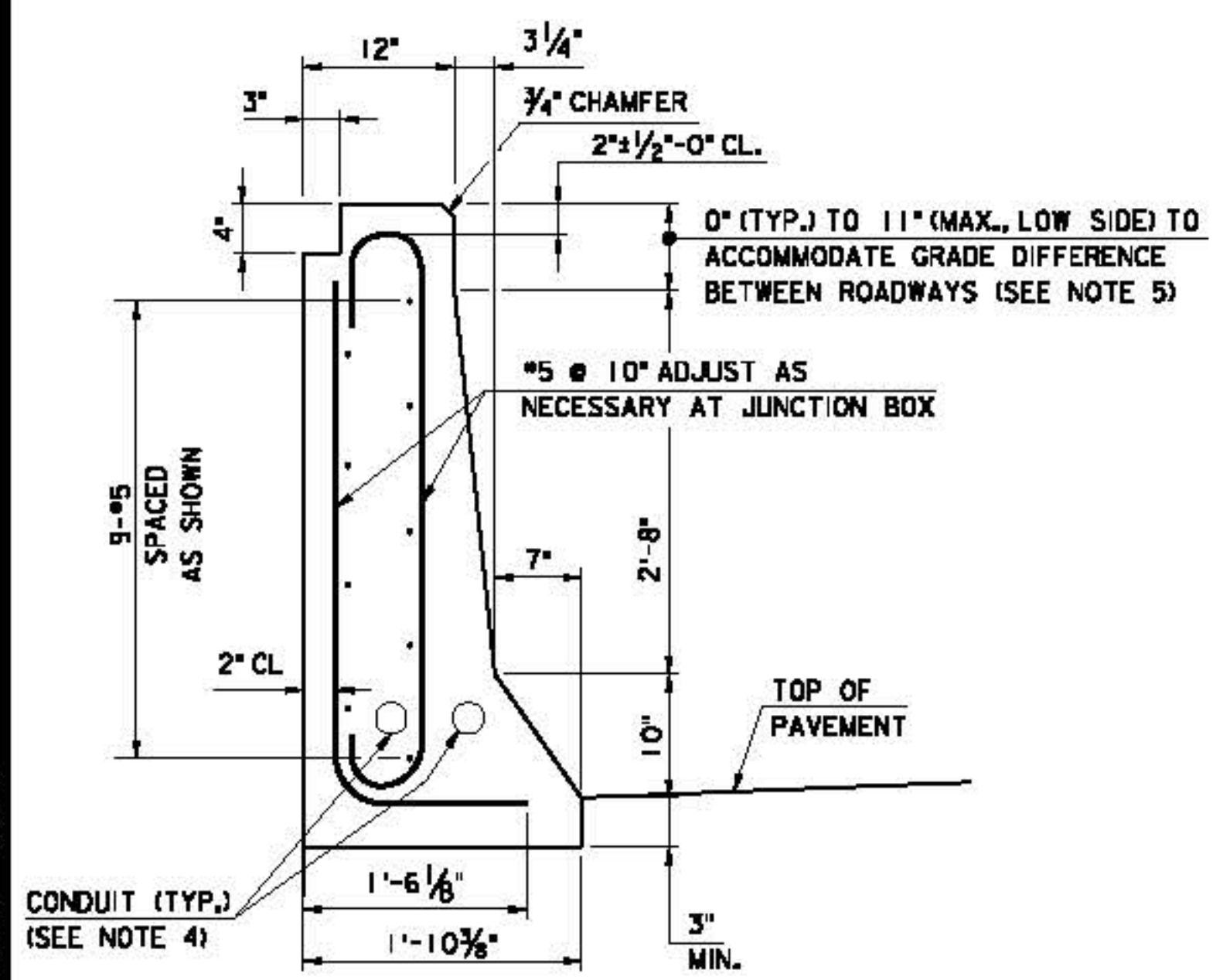


DATE: \$DATE\$

FILE: \$FILES\$



- NOTES:**
1. CONCRETE MEDIAN BARRIER SHALL CONFORM TO SECTION 508.
  2. ALL REINFORCEMENT SHALL BE EPOXY COATED.
  3. FOR ITEM LISTS, SEE SHEET ITS-19
  4. INSTALL CONDUIT OF SIZE AND TYPE AS SHOWN ON THE PLANS.
  5. WHERE THIS DIMENSION IS GREATER THAN 0', THE BARRIER HEIGHT TRANSITION FROM THE GUIDE RAIL CONNECTION SHALL OCCUR OVER THE SAME 10'-4" LENGTH AS SHOWN ON STD DWG ITS-17.



BY	DATE
EMC	08/2010
EG	08/2010
GH	08/2010
RJS	08/2010

NEW JERSEY TURNPIKE AUTHORITY  
**NEW JERSEY TURNPIKE**  
VMS EQUIPMENT MEDIAN - 2

HNTB 6 DIMITZ ROAD, SUITE 202, PARSIPPANY, NJ 07054 - (908) 240-7800/700  
**ANTHONY L. BARTELLO**  
New Jersey Professional Engineer License No. GE 45842

**STANDARD DRAWING ITS-18**

APP. NO.	DATE	REVISION
C	10/2013	CONFORMED DRAWING