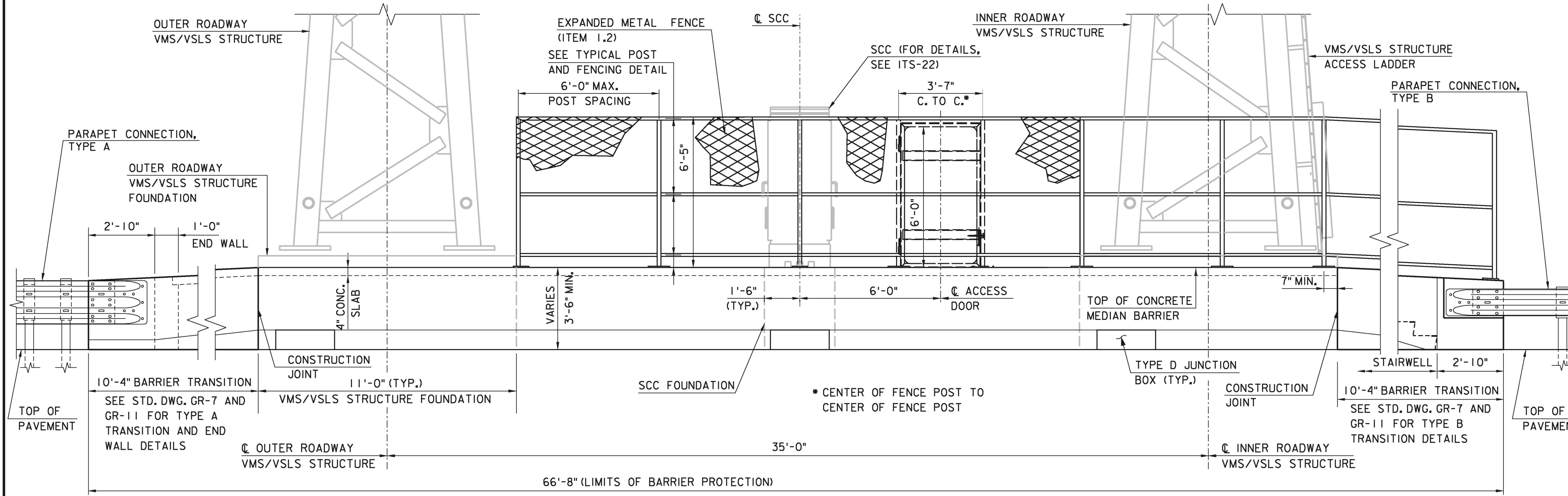
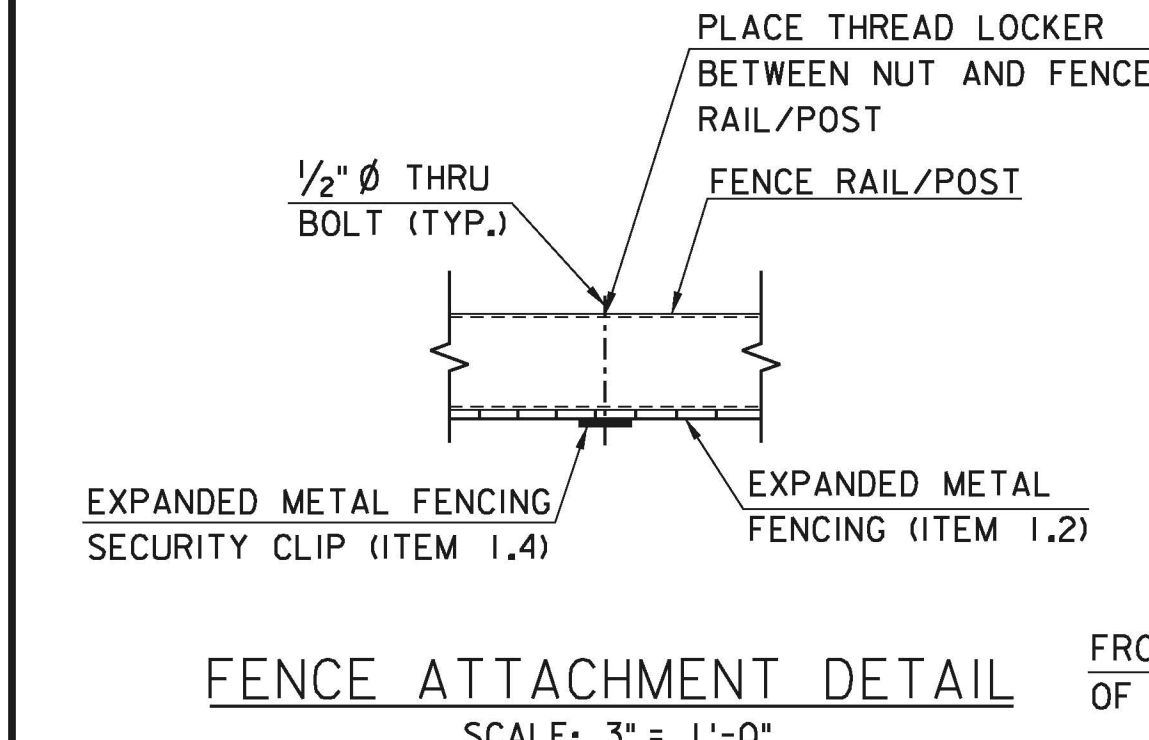


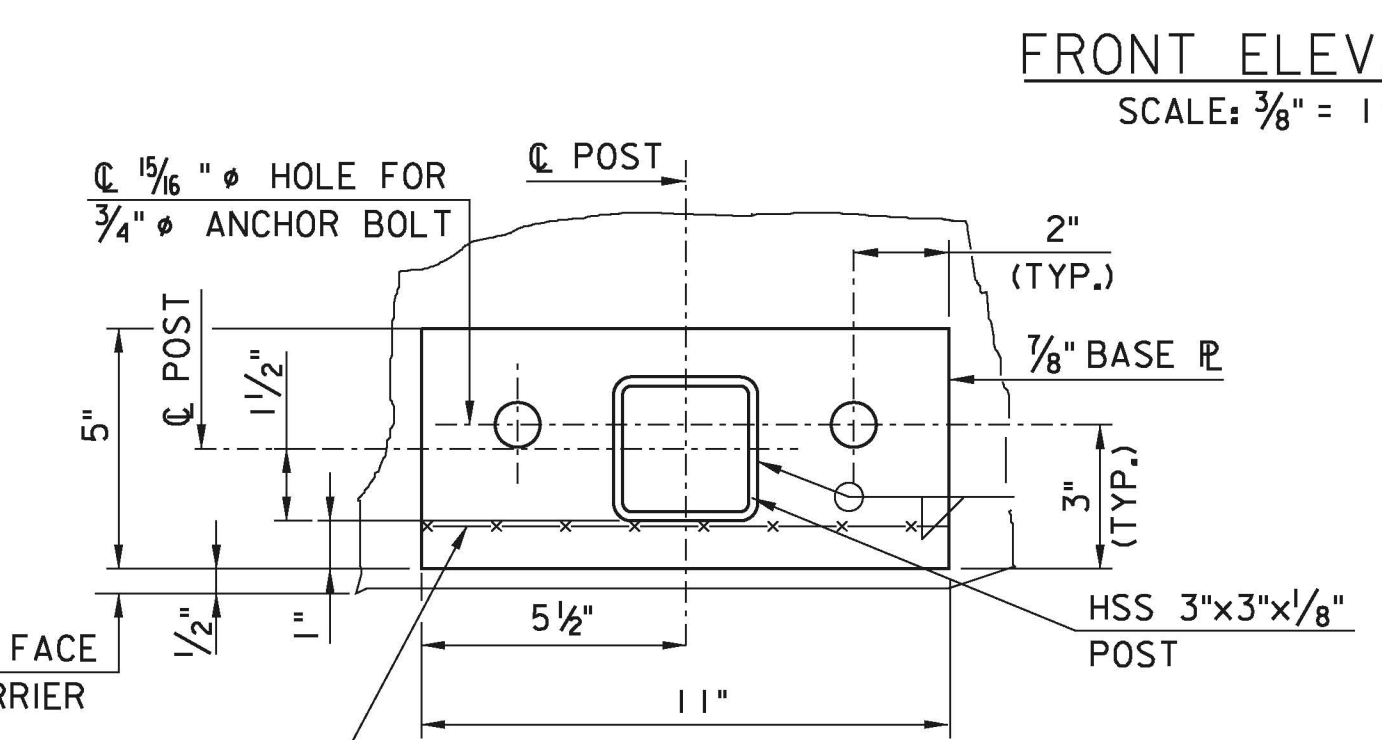
PLAN
SCALE: 3/8" = 1'-0"



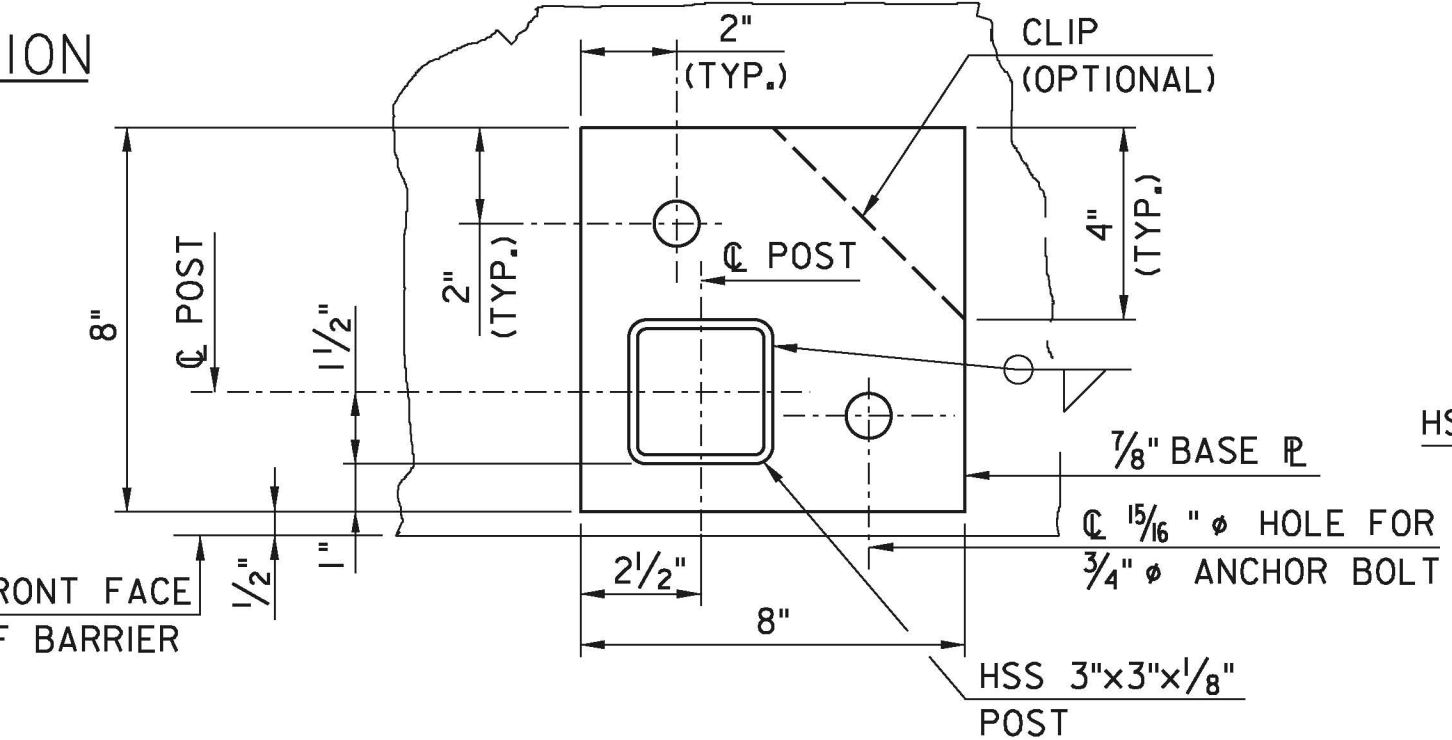
FRONT ELEVATION
SCALE: 3/8" = 1'-0"



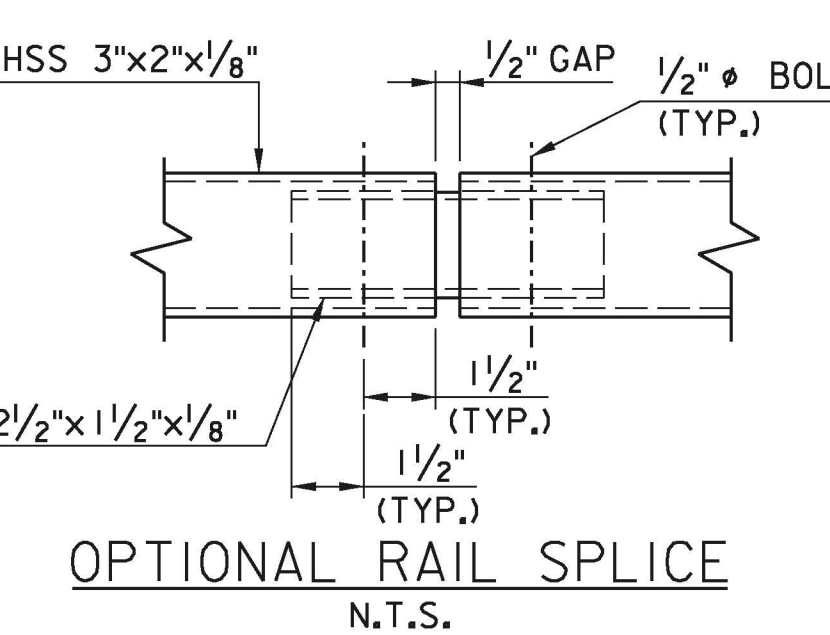
FENCE ATTACHMENT DETAIL
SCALE: 3" = 1'-0"



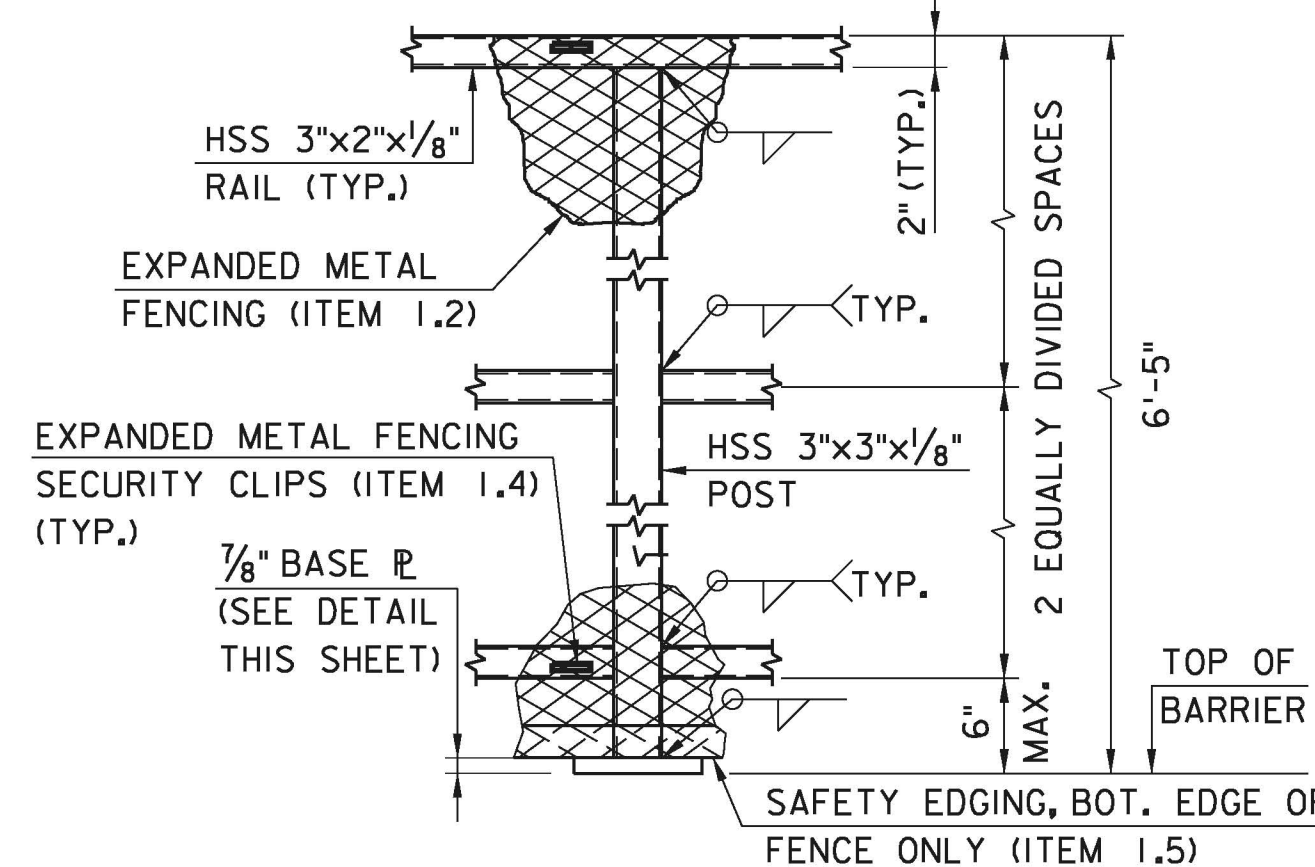
INTERMEDIATE POST BASE PLATE
SCALE: 3" = 1'-0"



END POST BASE PLATE
SCALE: 3" = 1'-0"



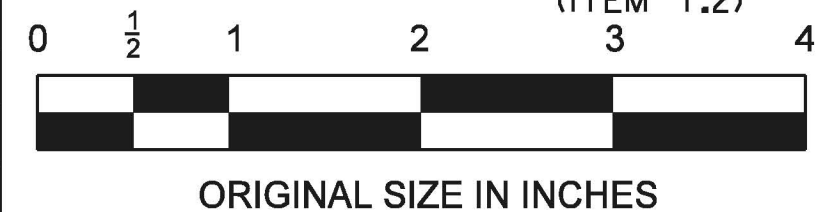
OPTIONAL RAIL SPLICE
N.T.S.



TYPICAL POST AND FENCING DETAILS
SCALE: 1" = 1'-0"

- GENERAL NOTES:**
- SPECIFICATIONS: ALL CONSTRUCTION AND MATERIALS SHALL BE IN ACCORDANCE WITH THE CURRENT NEW JERSEY TURNPIKE AUTHORITY STANDARD SPECIFICATIONS AS MODIFIED BY THE STANDARD SUPPLEMENTARY SPECIFICATIONS AND THESE STANDARD DRAWINGS.
 - UNLESS NOTED OTHERWISE, THE FOLLOWING MATERIAL SPECIFICATIONS SHALL APPLY:
 - A. HSS STEEL TUBING FOR FENCE POSTS AND RAILS SHALL MEET THE REQUIREMENTS OF ASTM A500 AND SHALL BE HOT DIP GALVANIZED IN ACCORDANCE WITH ASTM 123. GALVANIZED COATINGS DAMAGED BY THE CONTRACTOR DURING HANDLING OR ERECTION SHALL BE REPAIRED IN ACCORDANCE WITH ASTM A780.
 - B. STRUCTURAL STEEL PLATES FOR FENCE POST BASE PLATES SHALL BE ASTM A36 (MIN.).
 - C. ANCHOR BOLTS SHALL BE ASTM A307. NUTS SHALL CONFORM TO ASTM A563 AND WASHERS SHALL CONFORM TO ASTM F436. ANCHOR BOLTS AND WASHERS SHALL BE FULLY GALVANIZED IN ACCORDANCE WITH ASTM A153. IN LIEU OF CAST-IN-PLACE ANCHOR BOLTS, THE CONTRACTOR MAY USE AN APPROVED DRILL AND GROUT TYPE MECHANICAL ANCHOR AT NO ADDITIONAL COST TO THE AUTHORITY.
 - D. EXPANDED METAL FENCING AND EDGING, ACCESS DOOR AND ALL OTHER APPURTENANCES SHALL BE HOT-DIPPED GALVANIZED IN ACCORDANCE WITH ASTM A-123. GALVANIZED COATINGS DAMAGED BY THE CONTRACTOR DURING HANDLING OR ERECTION SHALL BE REPAIRED IN ACCORDANCE WITH ASTM A780.
 - E. CONCRETE IN MEDIAN BARRIERS, END WALL, STAIR WALL AND SLAB AND THE ELECTRICAL CABINET FOUNDATION(S) SHALL BE CLASS A CONCRETE IN ACCORDANCE WITH THE STANDARD SPECIFICATIONS.
 - F. REINFORCEMENT STEEL SHALL BE DEFORMED BARS MEETING THE REQUIREMENTS OF ASTM A615, GRADE 60 AND SHALL BE EPOXY COATED IN ACCORDANCE WITH THE STANDARD SPECIFICATIONS.
 - G. UNLESS NOTED OTHERWISE, ALL CONNECTIONS SPECIFYING BOLT DIAMETERS LESS THAN AND INCLUDING 1/2" SHALL BE:
 - BOLTS - STAINLESS STEEL (SS) TYPE 18-8 OR BETTER WITH STD. HEAD CAPSCREWS.
 - NUTS - DISTORTED THREAD 'TOP LOCK' LOCKNUTS.
 - WASHERS - ROUND HOLE, 0.059" MIN. THICKNESS.
 - THREAD LOCKER - LOCTITE 2760 ON ALL BOLTED CONNECTIONS (EXCLUDING ANCHOR BOLTS).
 - CONCRETE BARRIERS, END WALL, STAIR WALL AND SLAB, ELECTRICAL CABINET FOUNDATION(S) AND ALL ELECTRICAL CONDUITS SHALL BE PLACED PRIOR TO PLACEMENT OF COMMON EMBANKMENT BACKFILL.
 - SECURITY CLIPS USED FOR THE ATTACHMENT OF EXPANDED METAL FENCING TO FENCE POSTS AND RAILS SHALL BE INSTALLED IN ACCORDANCE WITH THE MANUFACTURER'S RECOMMENDATIONS.
 - SEE ELECTRICAL STANDARD DRAWING E-14 FOR JUNCTION BOX, TYPE D DETAILS.
 - SEE STANDARD DRAWING ITS-19 FOR BILL OF MATERIAL.
 - WORK THIS DRAWING WITH ITS-05, ITS-06, AND ITS-18 TO ITS-21.
 - UNLESS NOTED OTHERWISE, WORK SHOWN ON SHEETS ITS-17 TO ITS-21 SHALL BE PAID FOR UNDER PAY ITEM: "VMS EQUIPMENT MEDIAN."
 - FOR ABBREVIATIONS, SEE SHEET STANDARD DRAWING ITS-01.

BY	EMG	08/2010
TRACED	EG	08/2010
CHECKED	GH	08/2010
SUPERVISED	RJS	08/2010



ORIGINAL SIZE IN INCHES

APP.	C	04/2014	CONFORMED DRAWING
NO.			
DATE			
REVISION			

NEW JERSEY TURNPIKE AUTHORITY
NEW JERSEY TURNPIKE
VMS EQUIPMENT MEDIAN - 1

HNTB 9 ENTIN ROAD, SUITE 202, PARSIPPANY, NJ 07054 - COA# 24GA28000700
ANTHONY L. BARTELLO
New Jersey Professional Engineer License No. GE 45842

STANDARD DRAWING
ITS-17