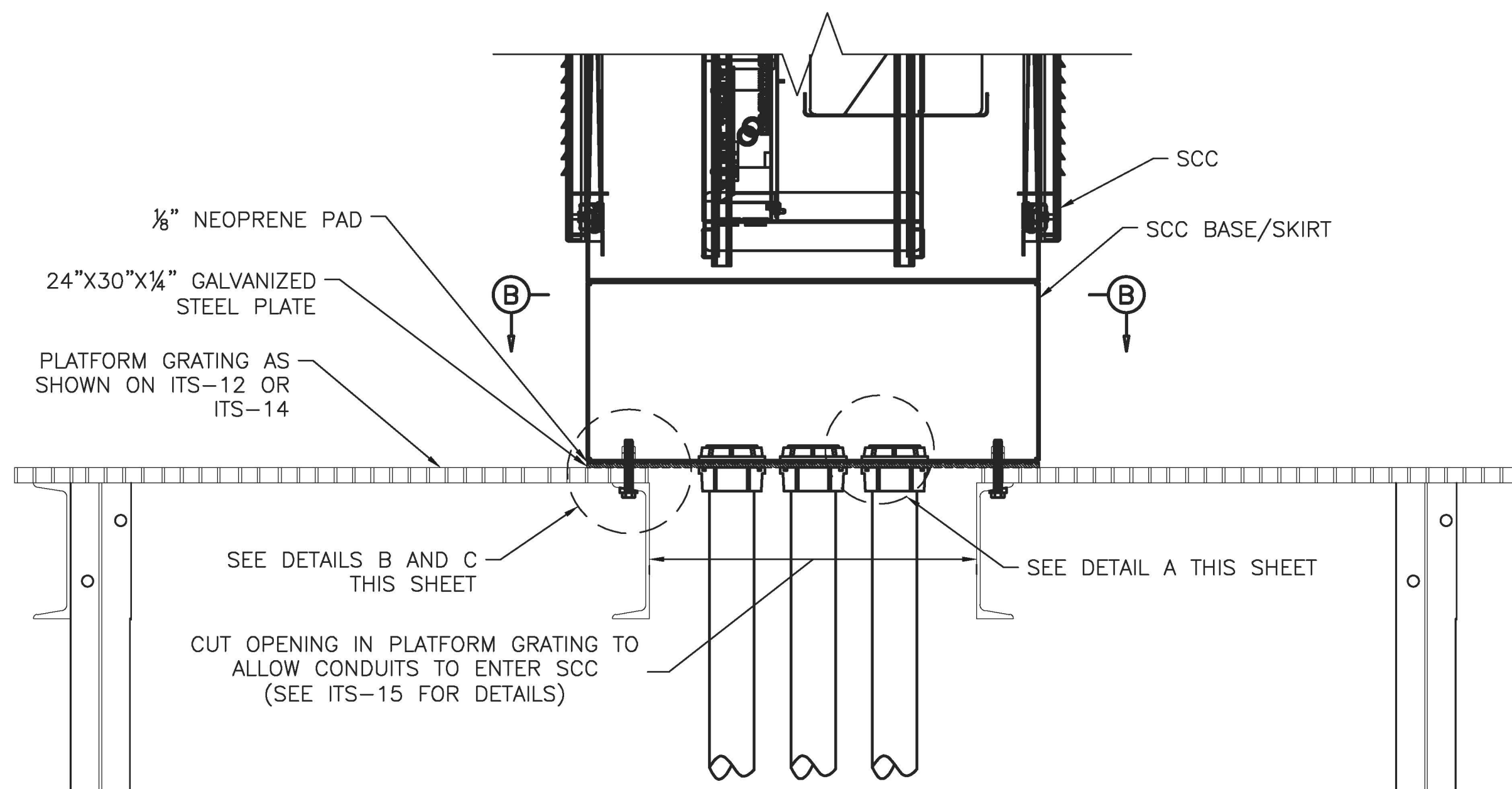


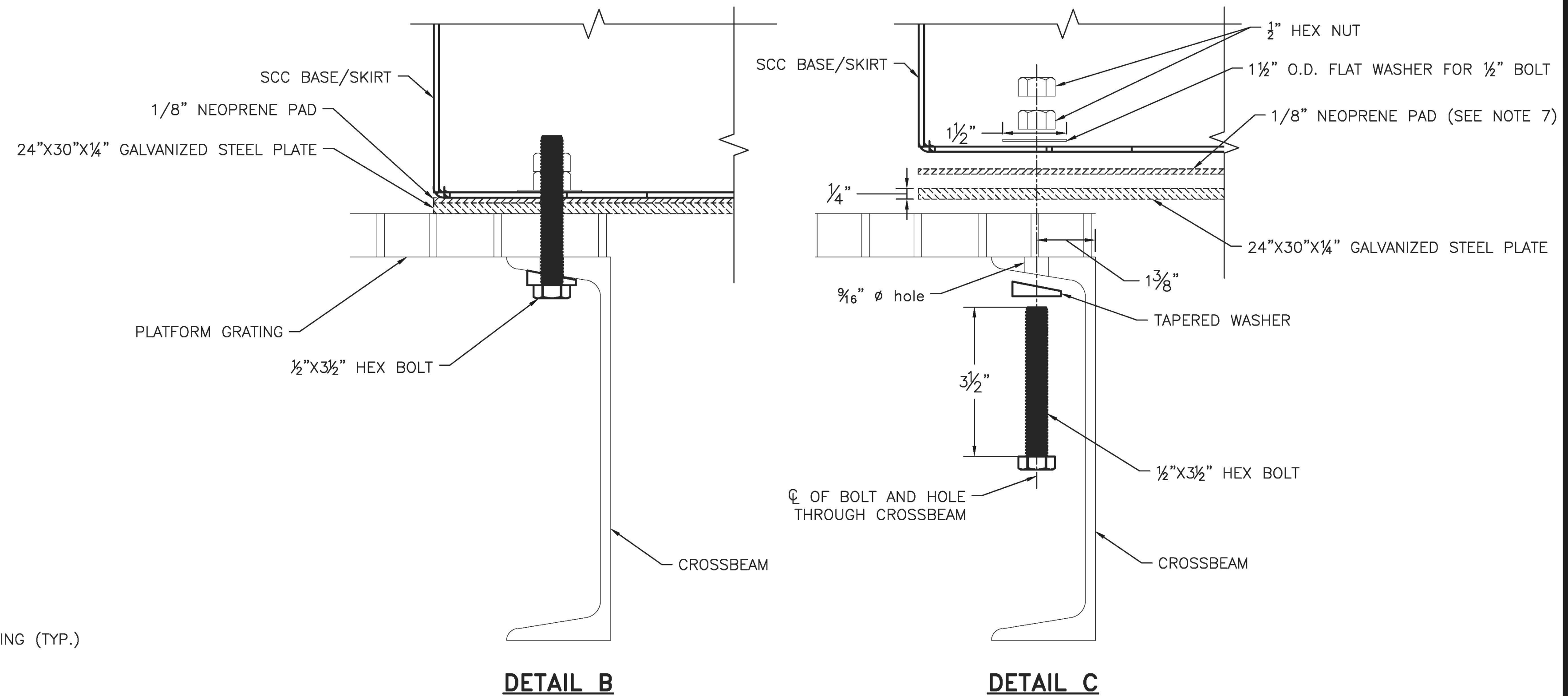
SECTION B-B AT SCC

SCALE: 1/2" = 1'-0"



SECTION A-A AT SCC

SCALE: 1/2" = 1'-0"



DETAIL B

DETAIL C

SCC CONNECTION DETAILS

SCALE: 6" = 1'-0"

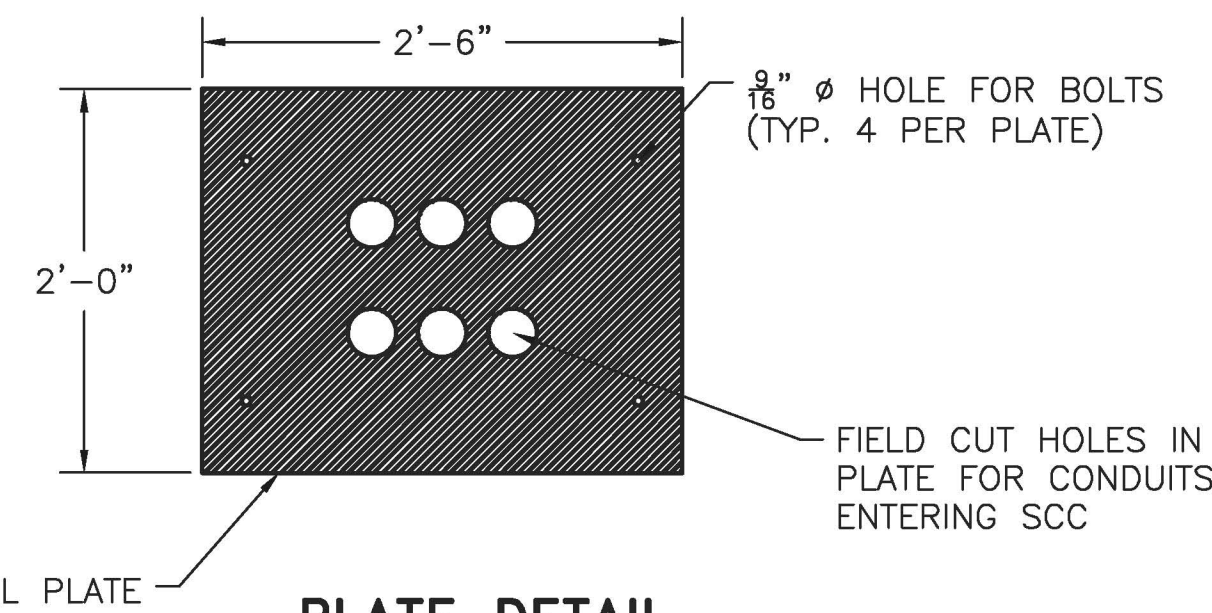
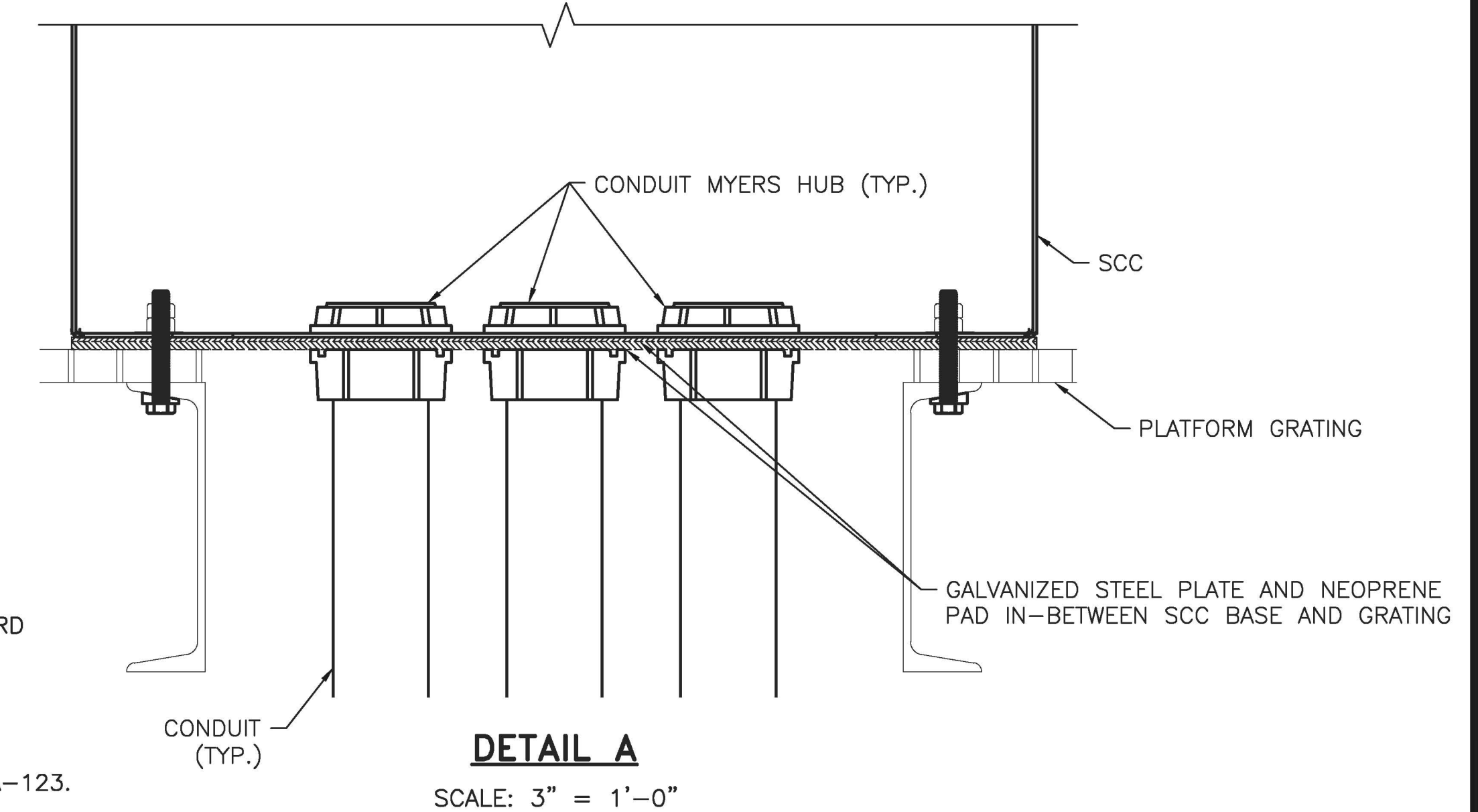


PLATE DETAIL

SCALE: 1" = 1'-0"
(See note 6)

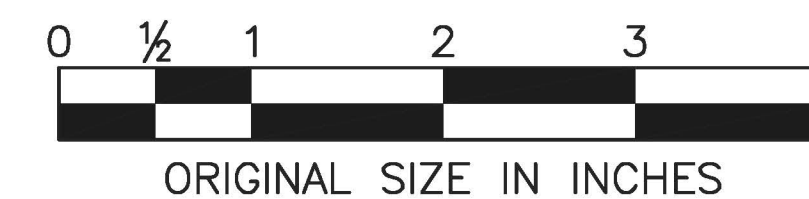


DETAIL A

SCALE: 3" = 1'-0"

NOTES:

1. FOR LEGEND, ABBREVIATIONS, AND REFERENCE NOTATIONS AND DETAILS, SEE STANDARD DRAWING ITS-01.
2. NUMBER AND SIZE OF CONDUITS MAY VARY BY LOCATION AND INSTALLATION.
3. CONDUIT ROUTING BETWEEN CABINETS UNDER THE PLATFORM NOT SHOWN. SEE STANDARD DRAWING ITS-09, ITS-10, AND THE CONTRACT PLANS FOR CONDUIT ARRANGEMENT.
4. ALL EXPOSED OUTDOOR CONDUITS SHALL BE PVC-COATED RIGID METALLIC CONDUITS (PCRM).
5. ALL FERROUS MATERIALS SHALL BE HOT-DIP GALVANIZED IN ACCORDANCE WITH ASTM A-123.
6. INSTALL 1/8" THICK NEOPRENE PAD IN-BETWEEN SCC BASE AND GALVANIZED STEEL PLATE. SIZE OF PAD SHALL BE MODIFIED IF USED FOR TRANSFORMER OR POWER CABINET. SEE NOTE 8 BELOW.
7. SEE ITS-15 FOR DETAILS OF OPENING IN PLATFORM GRATING.
8. DETAILS SHOWN FOR SCC ONLY. USE SIMILAR DETAILS FOR MOUNTING ITS POWER EQUIPMENT CABINET AND TRANSFORMER.
9. HARDWARE, INCLUDING NUTS, BOLTS, AND WASHERS USED TO SECURE EQUIPMENT TO PLATFORM SHALL BE STAINLESS STEEL.
10. CONDUITS BETWEEN ITS EQUIPMENT ON PLATFORM AND SIGN PEDESTAL SHALL BE OF TYPE PCRM.
11. ITS EQUIPMENT PLATFORM TYPE 3 AND 4 SHALL BE PROPERLY GROUNDED.



APP. NO.	DATE	REVISION
1	5/2014	REVISED CALLOUT
C	10/2013	CONFORMED DRAWING

	BY	DATE
MADE	EMG	02/2011
TRACED	EMG	02/2011
CHECKED	MS	02/2011
SUPERVISED	ALB	02/2011

NEW JERSEY TURNPIKE AUTHORITY
NEW JERSEY TURNPIKE
 PLATFORM MOUNTED
 ITS EQUIPMENT PROTECTION DETAIL

HNTB 9 ENTIN ROAD, SUITE 202,
 PARSIPPANY, NJ 07054 - COA# 24GA28000700
ANTHONY L. BARTELLO
 New Jersey Professional Engineer License No. GE 45842

STANDARD
 DRAWING
 ITS-13