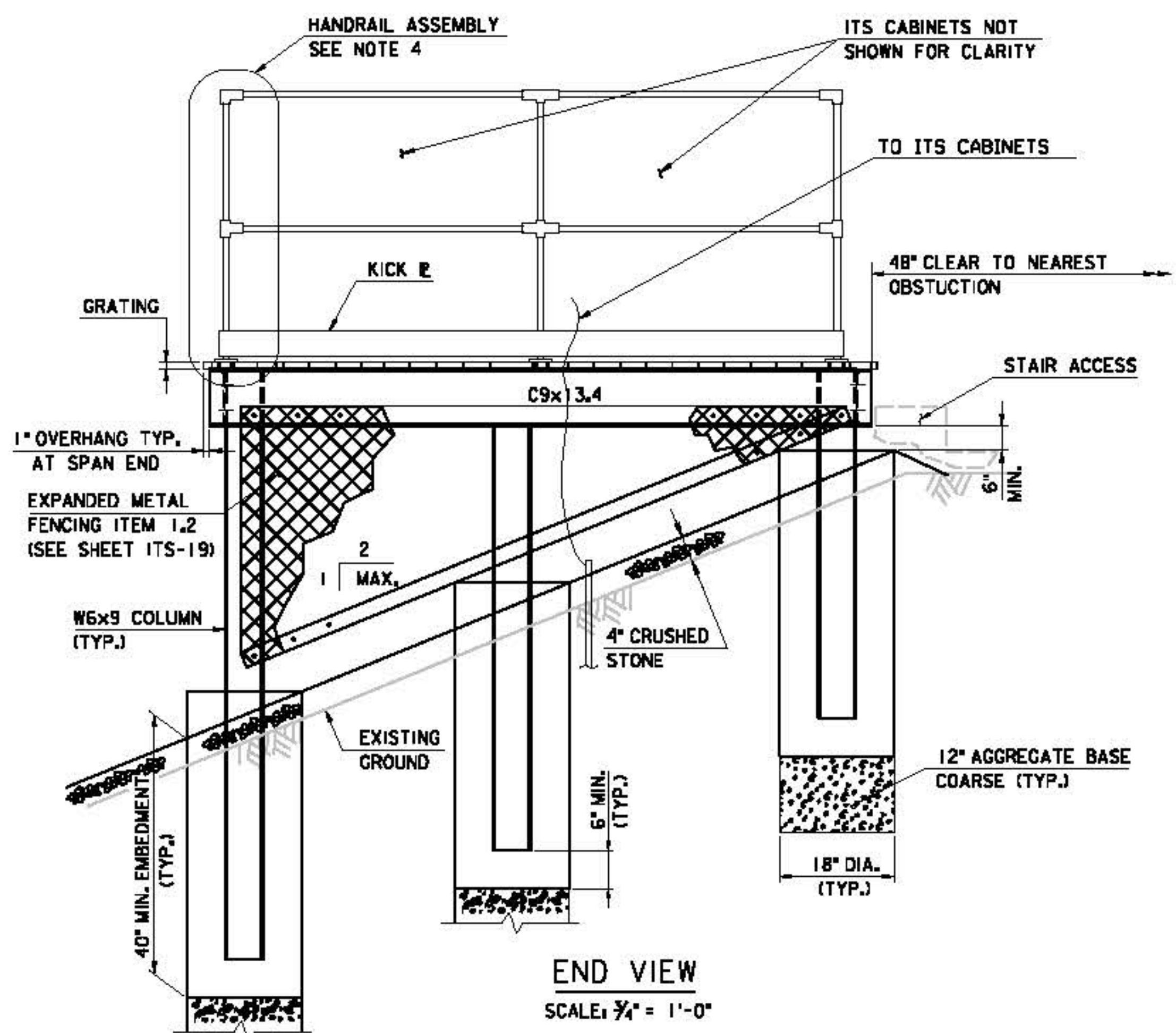
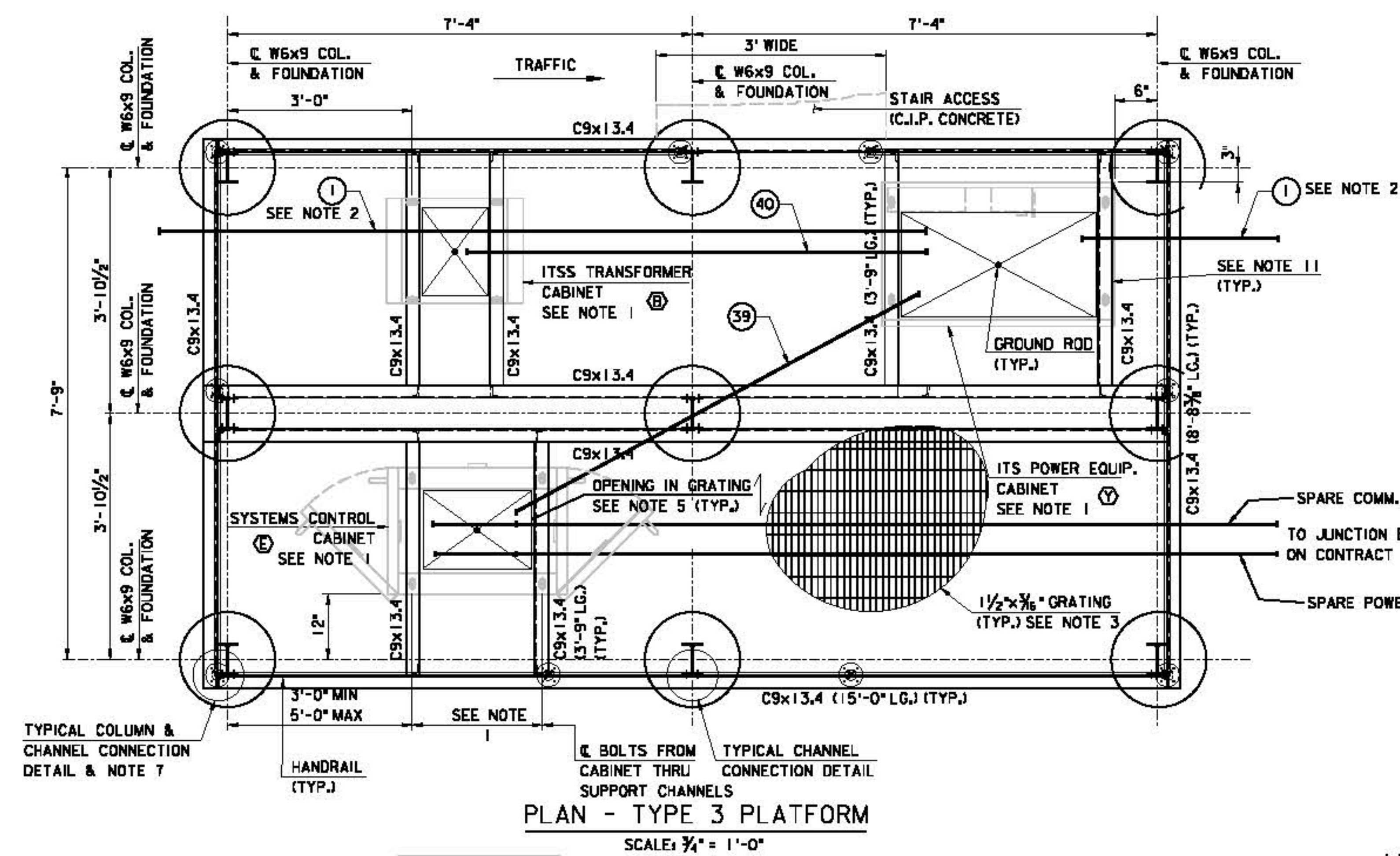


DATE: \$DATE\$

FILE: \$FILES\$

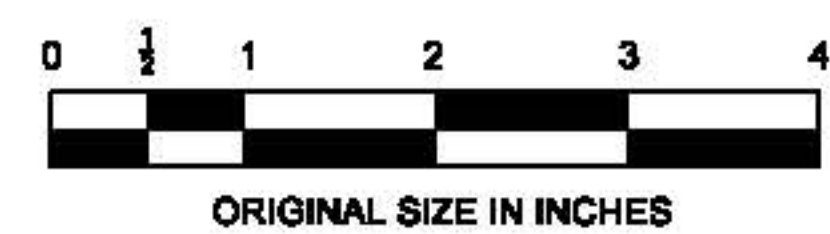


LEGEND:

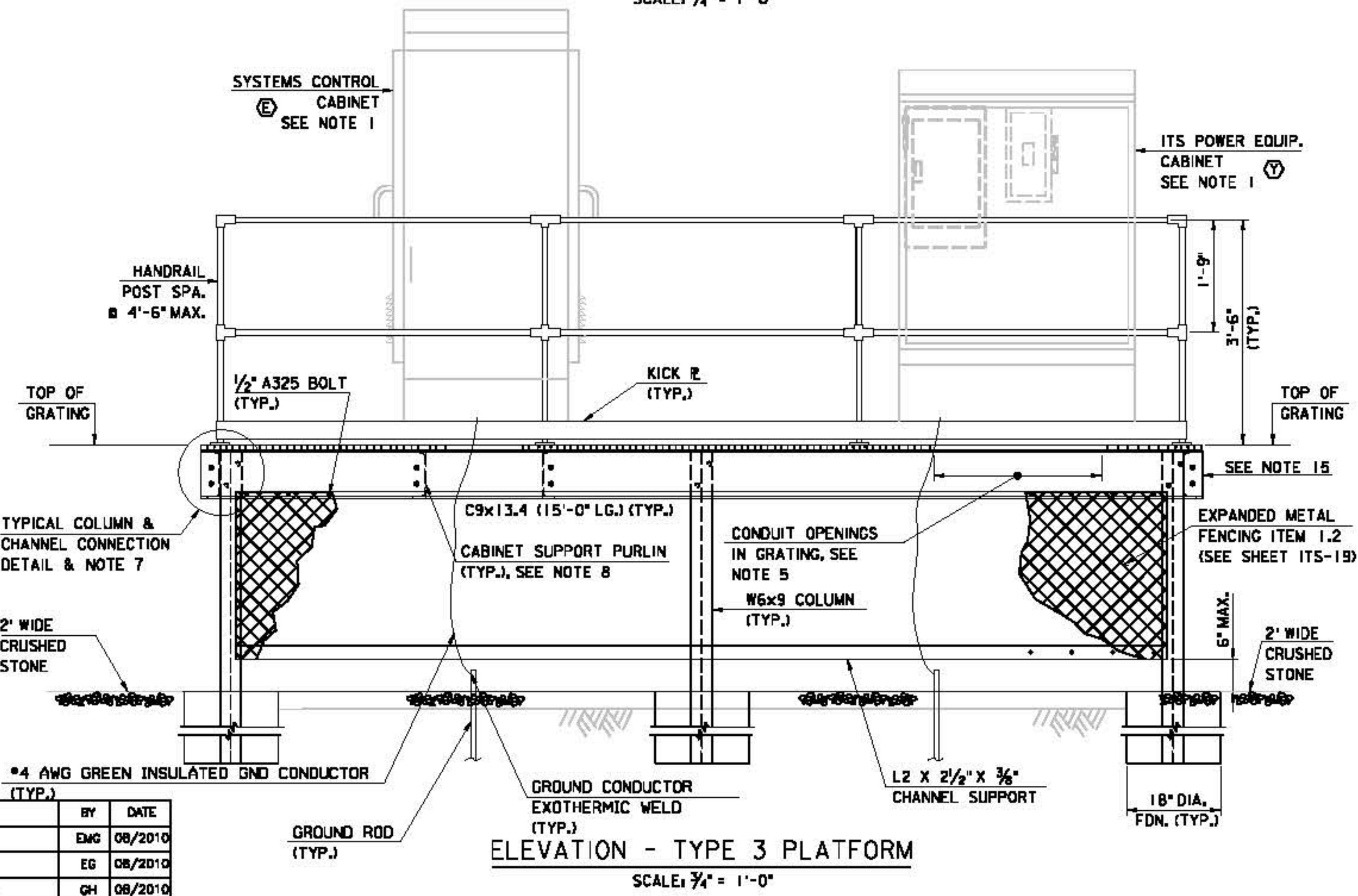
↓ DENOTES DIRECTION OF GRATING BEARING BAR.

NOTES:

1. SEE STANDARD DRAWING ITS-10 AND ITS-11 FOR EQUIPMENT DETAILS AND DIMENSIONS.
2. EITHER CONDUIT MAY BE USED TO PULL CABLES DEPENDING ON THE DIRECTION FROM WHICH THE INCOMING UTILITY SERVICE FEED ENTERS THE INSTALLATION SITE.
3. FOR GRATING SIZE AND TYPE, SEE STANDARD DRAWING ITS-15.
4. FOR HANDRAIL DETAILS, SEE STANDARD DRAWING ITS-15.
5. FOR CONDUIT OPENINGS IN GRATING, SEE STANDARD DRAWING ITS-13 AND ITS-15.
6. UNLESS OTHERWISE NOTED, ALL BOLTED CONNECTIONS SPECIFYING BOLT DIAMETER 1/2" AND LARGER SHALL BE BOLTS - ASTM A325 TYPE 1. ALL BOLTS SHALL BE INSTALLED WITH ASTM A563 NUTS AND F436 WASHERS. BOLTS, NUTS AND WASHERS SHALL BE GALVANIZED IN ACCORDANCE WITH ASTM A153.
7. FOR TYPICAL CONNECTION DETAILS, SEE STANDARD DRAWING ITS-15.
8. FOR CABINET SUPPORT PURLIN DETAILS, SEE STANDARD DRAWING ITS-15.
9. ALL FERROUS MATERIALS SHALL BE HOT-DIP GALVANIZED IN ACCORDANCE WITH ASTM A-123.
10. SEE CONTRACT PLANS FOR STAIR ACCESS DETAILS.
11. STEEL SHAPES AND PLATES SHALL BE ASTM GRADE A36 AT A MINIMUM.
12. CONDUITS BETWEEN ITS EQUIPMENT ON ITS PLATFORM AND SIGN PEDESTAL SHALL BE PCRM.
13. CONTRACTOR SHALL EXCAVATE BELOW PLATFORM FOR CONDUIT INSTALLATION.
14. SPARE CONDUIT(S) NOT LABELED OR IDENTIFIED ON THIS SHEET SHALL BE 3" PCRM AND BE TERMINATED AT THE NEAREST RESPECTIVE JB.
15. ITS EQUIPMENT PLATFORM SHALL BE BONDED TO GROUND ROD BY EXOTHERMIC WELD. SIGN STRUCTURE SHALL BE GROUNDED. SEE DETAILS ON ITS-11.
16. SCC, ITSS TRANSFORMER, AND ITS POWER EQUIPMENT CABINET SHALL BE GROUNDED TO #4 AWG GREEN INSULATED GROUND CONDUCTOR.



APP. NO.	DATE	REVISION
C	10/2013	CONFORMED DRAWING



NEW JERSEY TURNPIKE AUTHORITY
NEW JERSEY TURNPIKE
 ITS EQUIPMENT PLATFORM
 TYPE 3 DETAILS - 1

HINTB 8 DITM ROAD, SUITE 202,
 PARLIN, NJ 07654 - (908) 246-2800/700
ANTHONY L. BARTELLO
 New Jersey Professional Engineer License No. GE 45842

STANDARD DRAWING
 ITS-12