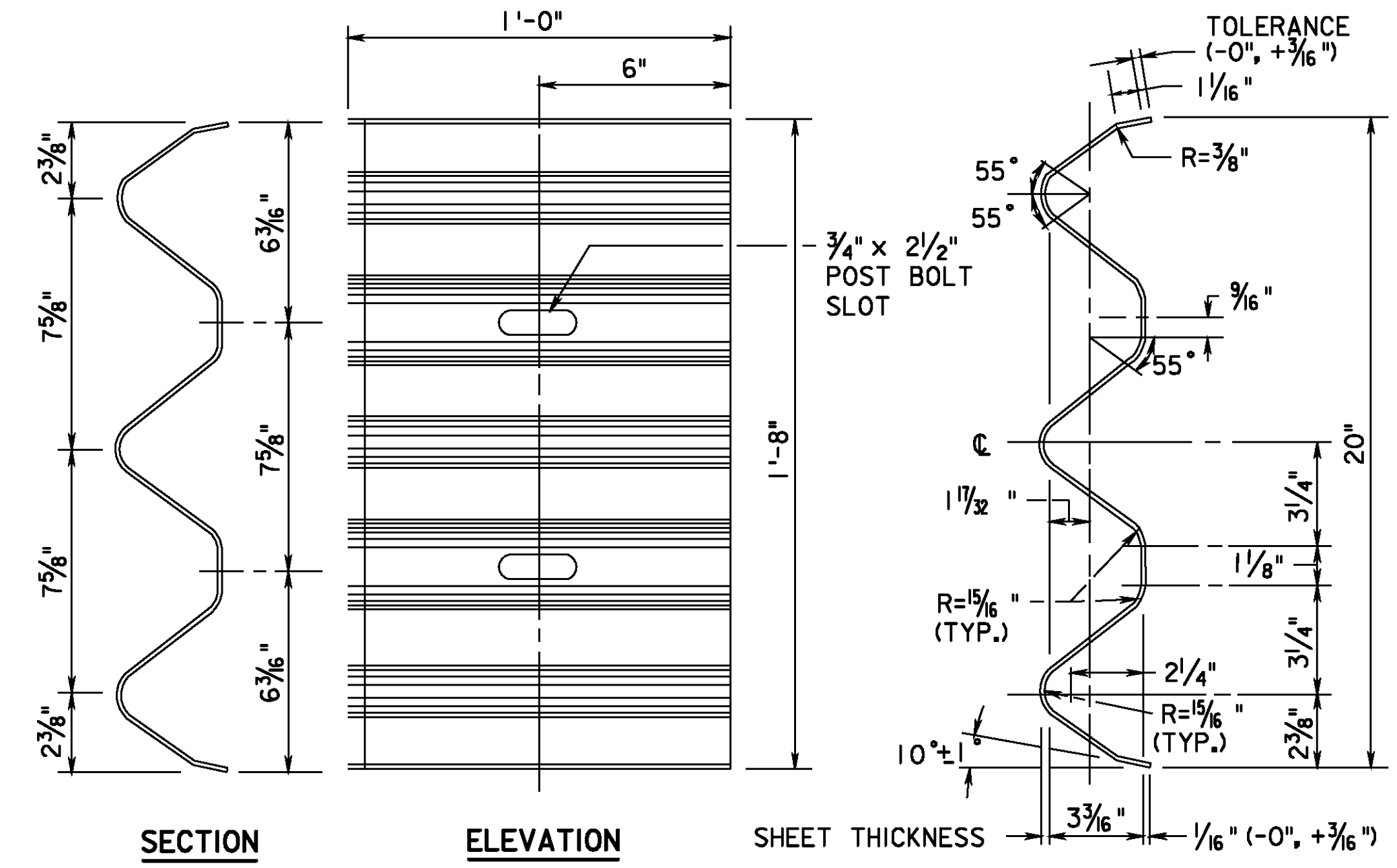
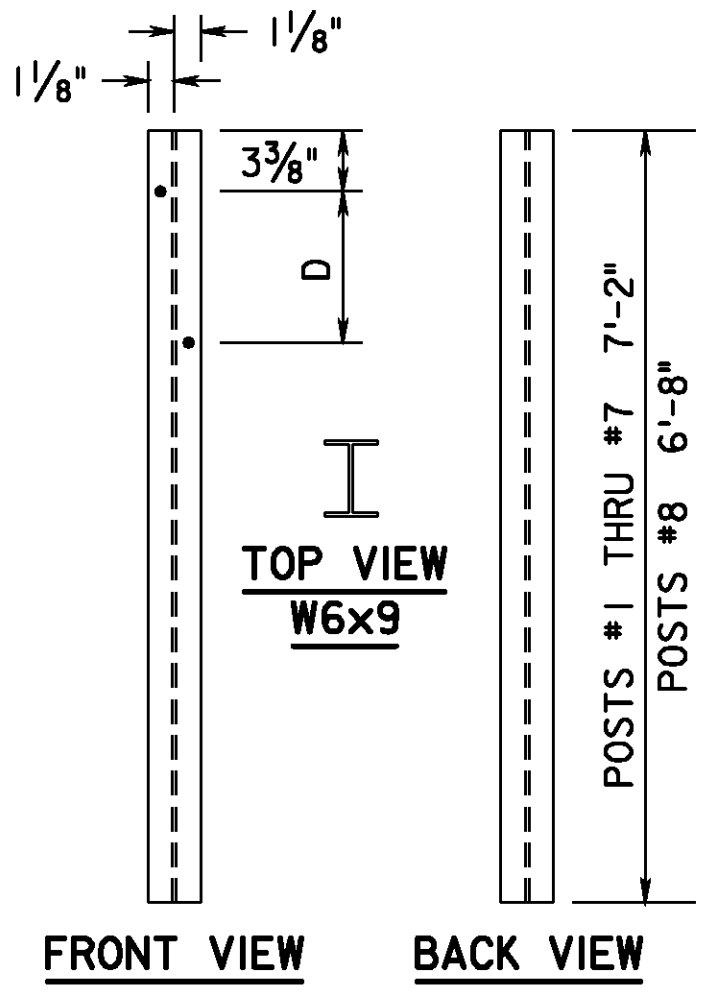
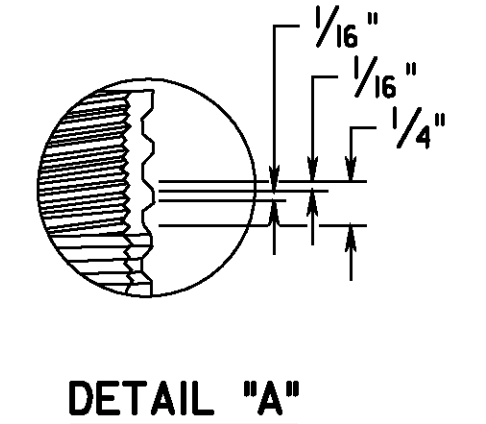
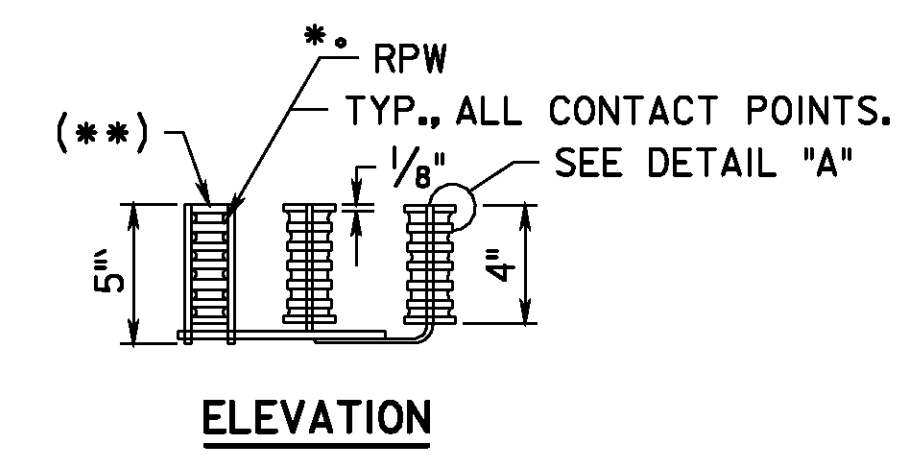
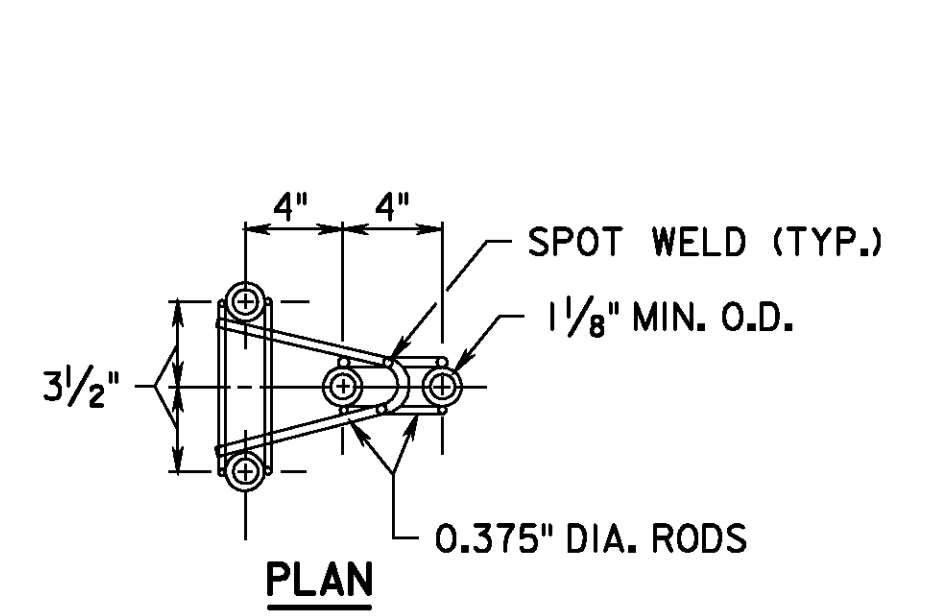
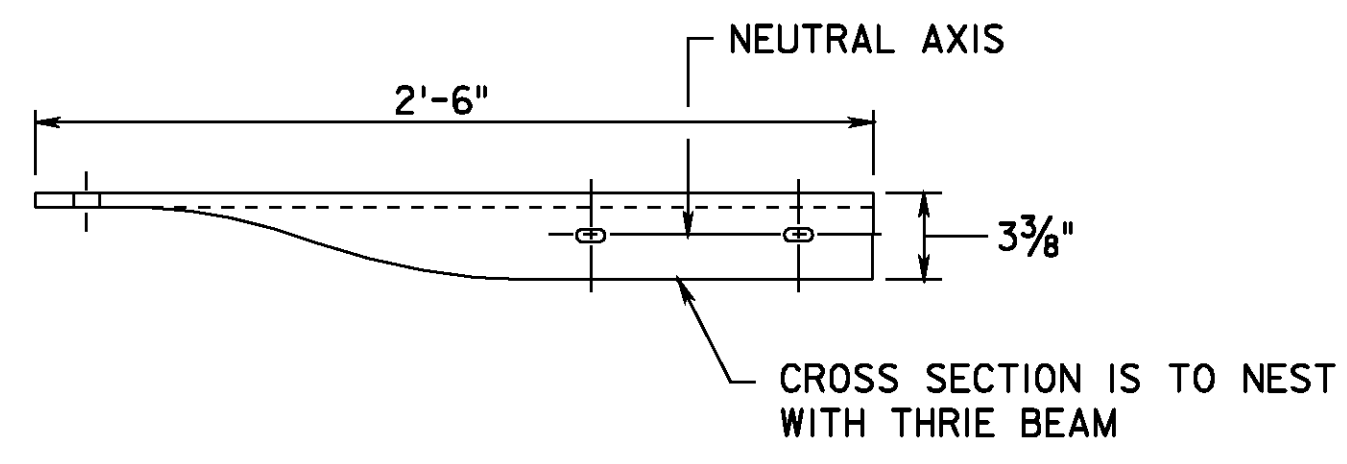


POST AND SPACER TUBE DIM.		
DIM.	POSTS #1 - #7	POST #8
A	1'-5 3/4"	1'-1 7/8"
B	7 5/8"	3 3/4"
C	7 5/8"	3 3/4"
D	7 5/8"	3 3/4"

- NOTES:**
- STEEL FOR SPACER TUBE SHALL MEET ASTM A500 GRADE B.
 - STEEL FOR WIDE-FLANGE SHALL MEET ASTM A36.
 - GALVANIZED
 - ALL HOLES DRILLED OR PUNCHED TO 3/4" DIA.
 - WELDING OF SPACER TUBE SHALL BE DONE ACCORDING TO THE ANSI/AWS D1.1 STRUCTURAL WELDING CODE.

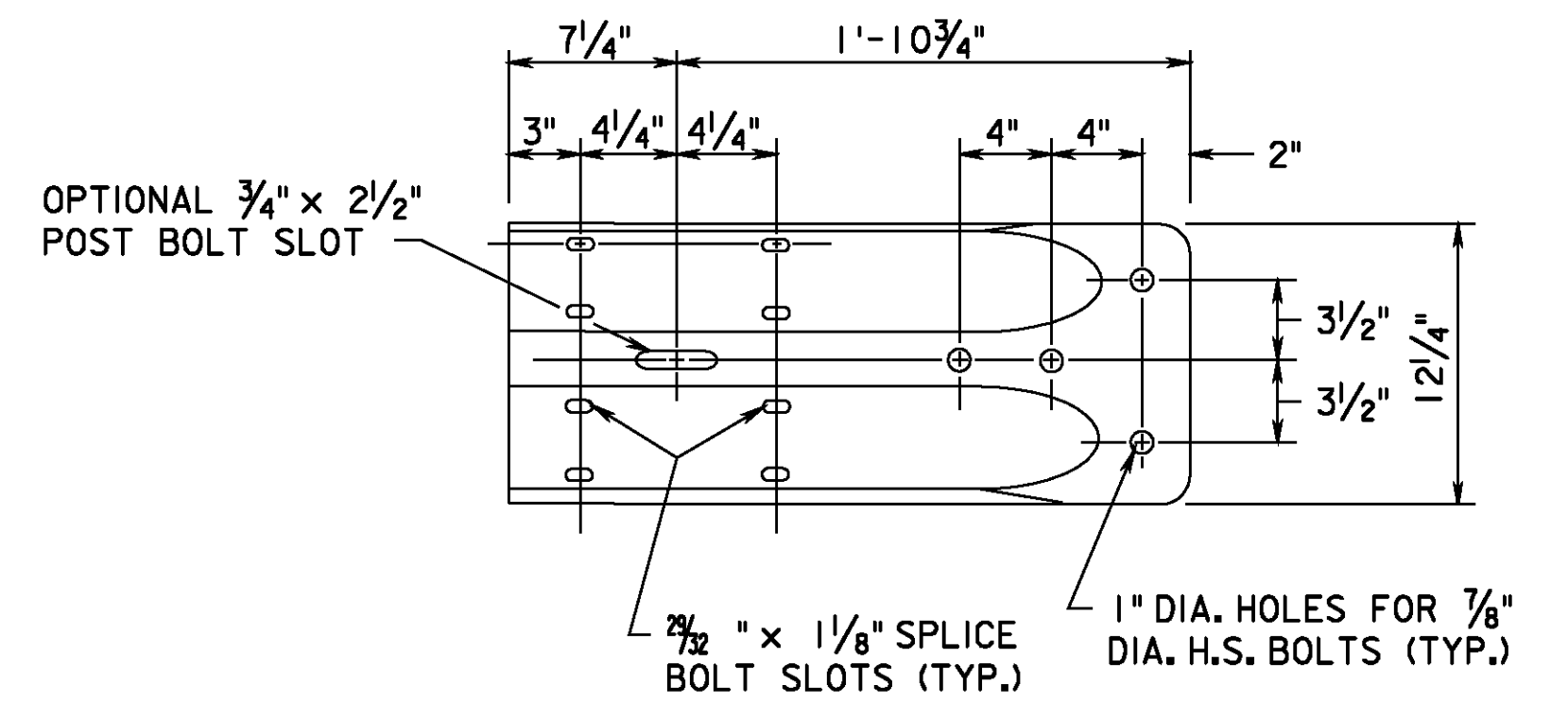
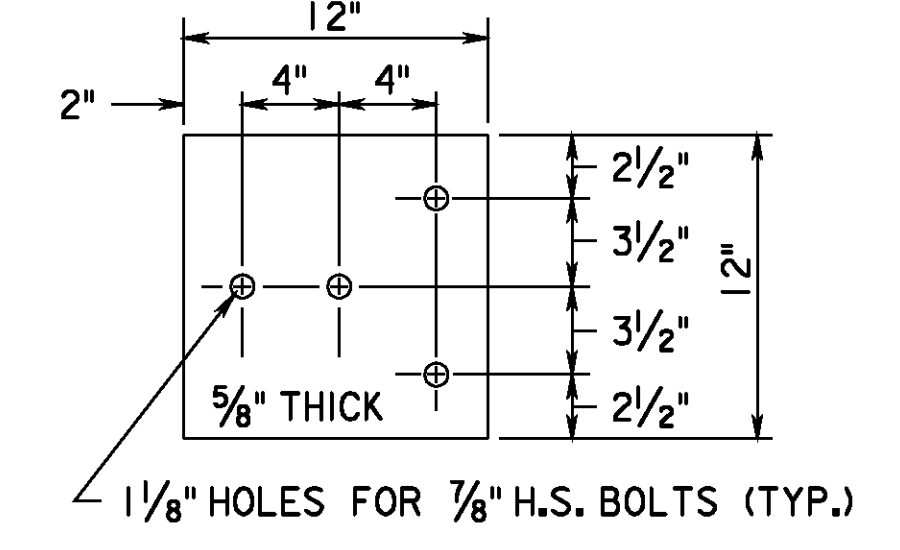
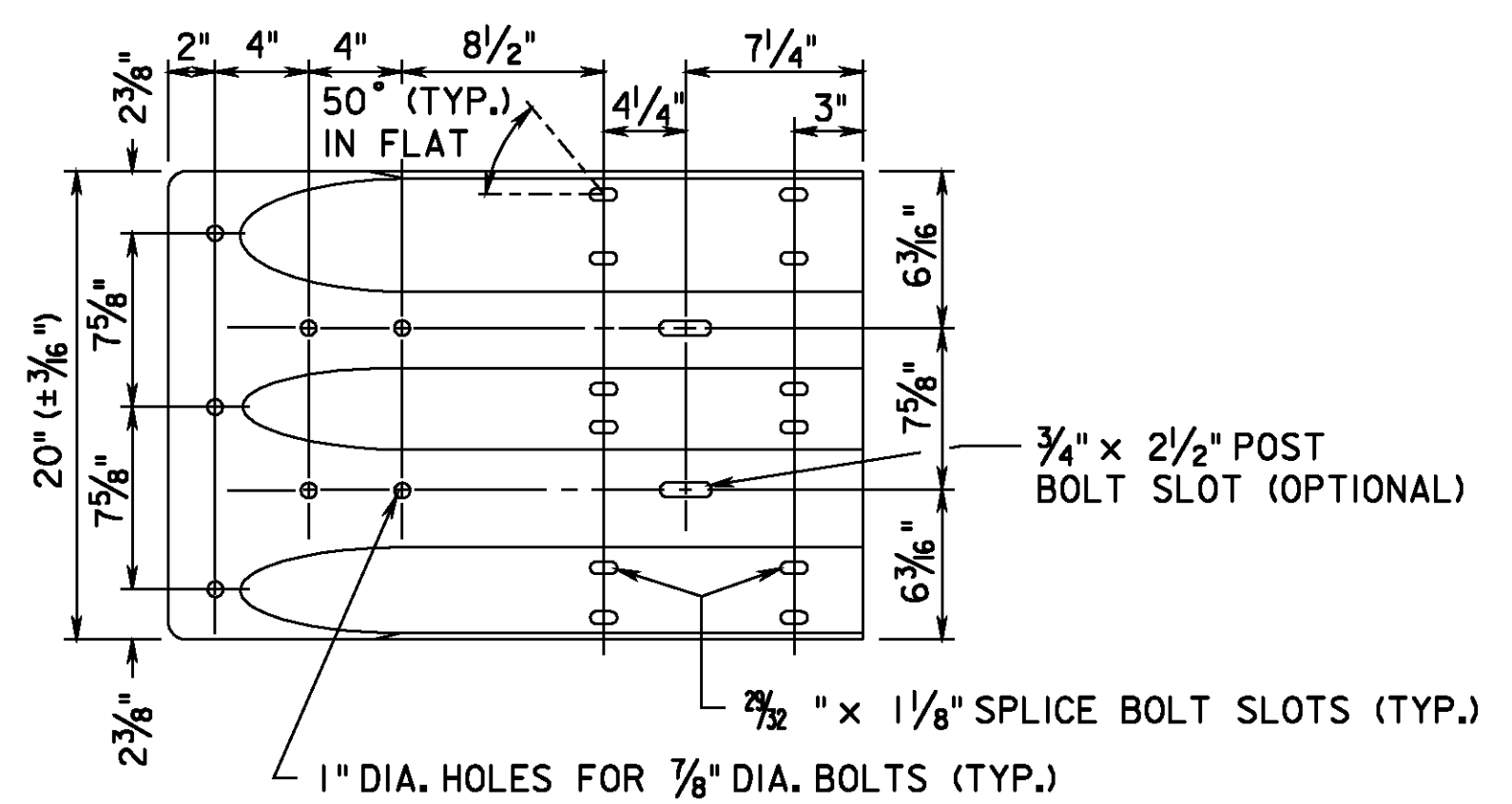
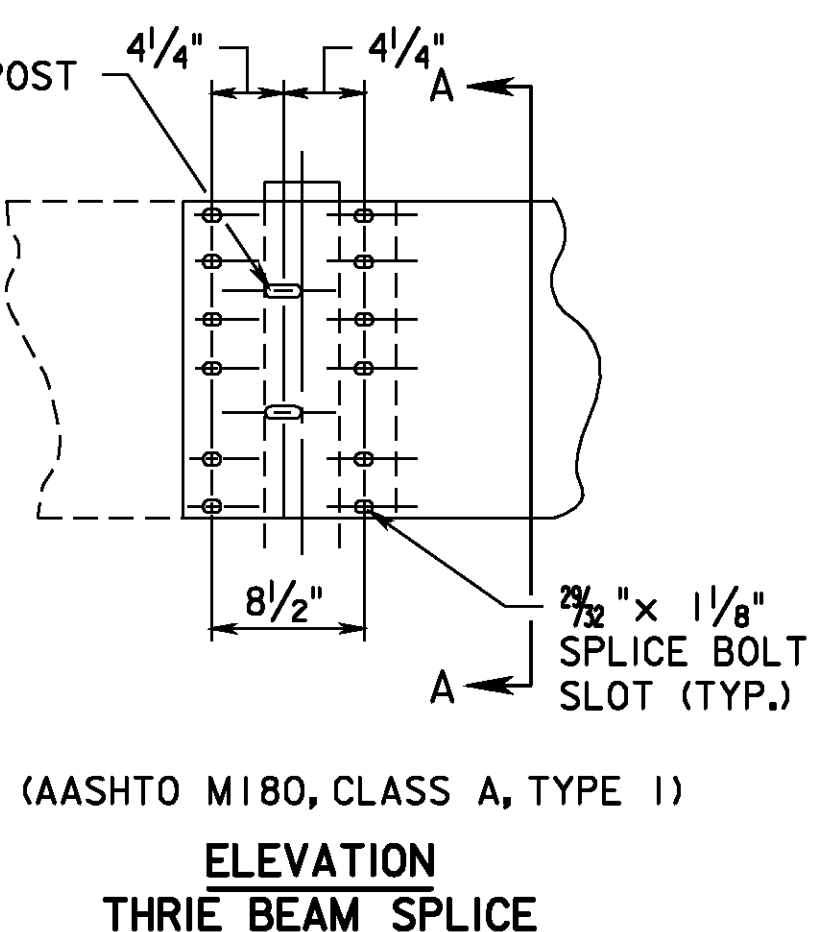
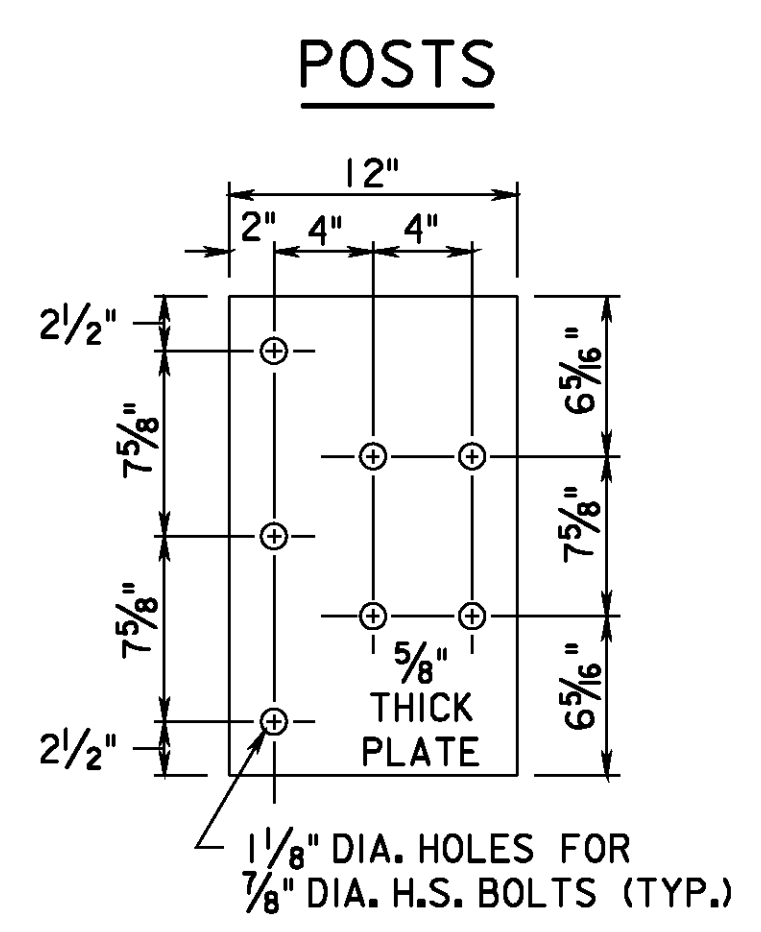
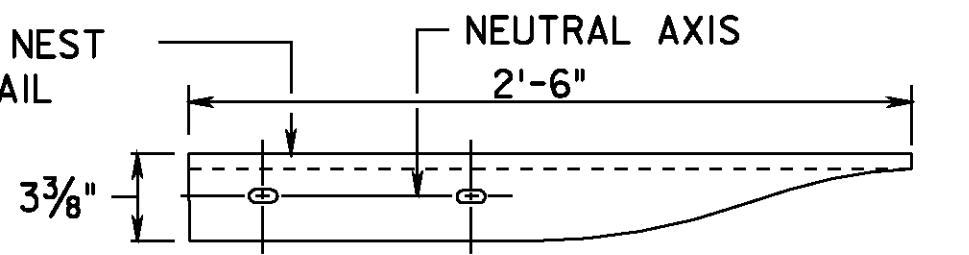


(AASHTO M180, CLASS A, TYPE 1)
BACKUP PLATE AT NON SPLICE POSTS



SEE THRIE BEAM DETAIL FOR TERMINAL ANCHORAGE

CROSS SECTION IS TO NEST WITH W BEAM GUIDE RAIL



BACKUP PLATE FOR TERMINAL CONNECTOR

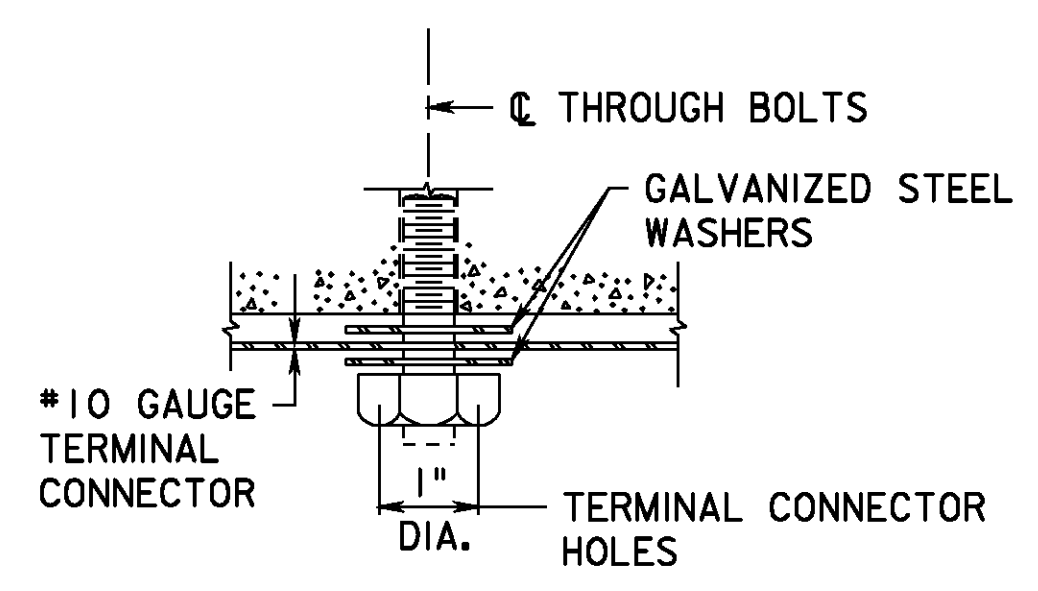
(AASHTO M180, CLASS A, TYPE 1)
ELEVATION THRIE BEAM SPLICE

(AASHTO M180, CLASS B, TYPE 1)
TERMINAL CONNECTOR

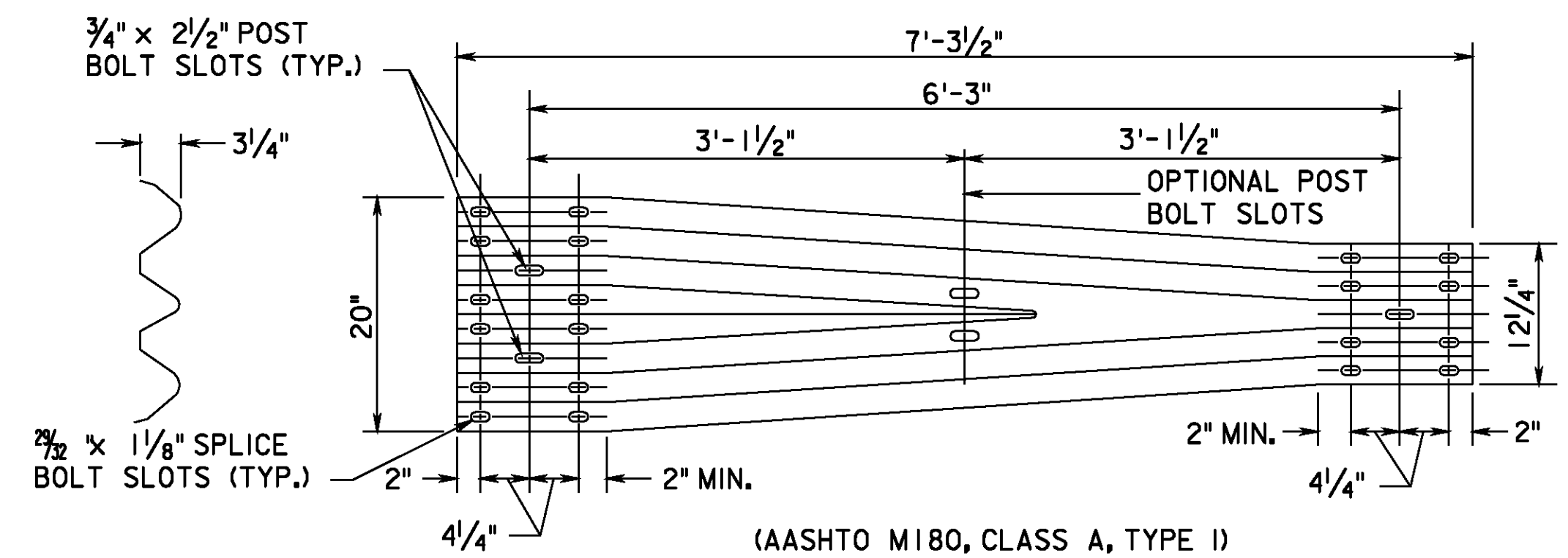
BACKUP PLATE FOR TERMINAL CONNECTOR

(AASHTO M180, CLASS B, TYPE 1)
TERMINAL CONNECTOR

W BEAM TERMINAL CONNECTOR



TERMINAL ANCHORAGE



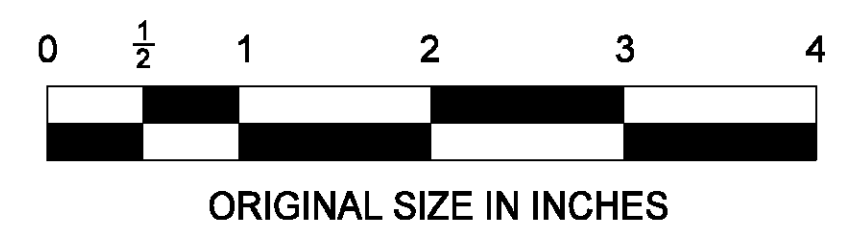
(AASHTO M180, CLASS A, TYPE 1)
W - THRIE BEAM TRANSITION SECTION

THRIE BEAM

SEE GR-11 FOR GENERAL NOTES

NOTES:

- * EACH WELDED ATTACHMENT OF WIRE TO FERRULE SHALL DEVELOP THE TENSILE STRENGTH OF THE WIRE.
- (**) THREADED STEEL INSERT WITH SOLID BOTTOM TAPPED TO A MINIMUM THREADED DEPTH OF 2 1/2" FOR USE WITH 7/8" - 9 x 2 1/2" GALVANIZED H.S. HEX BOLT & A 1 5/16" I.D., 2/4" O.D., 7/32" THICK, TYPE A, PLAIN WASHER.
- FOUR (4) BOLTS AND FOUR (4) WASHERS TO BE PROVIDED WITH EACH ASSEMBLY.
- WIRES SHOWN ARE MINIMUM ALLOWABLE SIZE AND SHALL CONFORM TO THE REQUIREMENT OF ASTM A510, GRADE 1030 AND HAVE A MINIMUM TENSILE STRENGTH OF 100,000 P.S.I..
- FERRULES SHALL BE MADE OF STEEL MEETING THE REQUIREMENTS OF ASTM A108, GRADE 12L14. INSERTS SHALL BE TAPPED TO THE DIMENSIONAL REQUIREMENTS SPECIFIED IN ASTM A563 FOR NUTS RECEIVING GALVANIZED BOLTS.
- BOLTS SHALL CONFORM TO THE REQUIREMENTS OF ASTM A325 OR A449 AND SHALL BE THREADED FULL LENGTH. WASHERS SHALL BE MADE OF STEEL AND SHALL MEET THE DIMENSIONAL REQUIREMENTS OF ASTM B272 TYPE A PLAIN WASHERS. BOTH SHALL BE GALVANIZED IN ACCORDANCE WITH ASTM A153.
- WIRE DIAMETERS, MATERIALS REQUIREMENTS, FERRULE MATERIALS REQUIREMENTS AND EXTERNAL DIAMETERS MAY BE ALTERED PROVIDED MANUFACTURER DEMONSTRATES REVISED DESIGN IS EQUIVALENT TO THE DESIGN SHOWN IN THIS STANDARD.
- DIMENSIONAL TOLERANCE NOT SHOWN OR IMPLIED ARE INTENDED TO BE THOSE CONSISTENT WITH THE PROPER FUNCTIONING OF THE PART, INCLUDING ITS APPEARANCE, AND ACCEPTED MANUFACTURING PRACTICE.
- GARDEN STATE PARKWAY ELEMENTS AND POSTS ARE TO BE WEATHERING STEEL AND HOT DIP GALVANIZED 6" MIN. ABOVE PROPOSED GROUND LINE. REFER TO STANDARD SPECIFICATIONS. SEE GR-11 FOR GENERAL NOTES.



NEW JERSEY TURNPIKE AUTHORITY

THRIE BEAM AND W BEAM TERMINAL CONNECTOR

OFFICE OF THE CHIEF ENGINEER 2009 STANDARD DRAWING

App. No. 04/09 ORIGINAL DRAWING REVISION

GR-13