

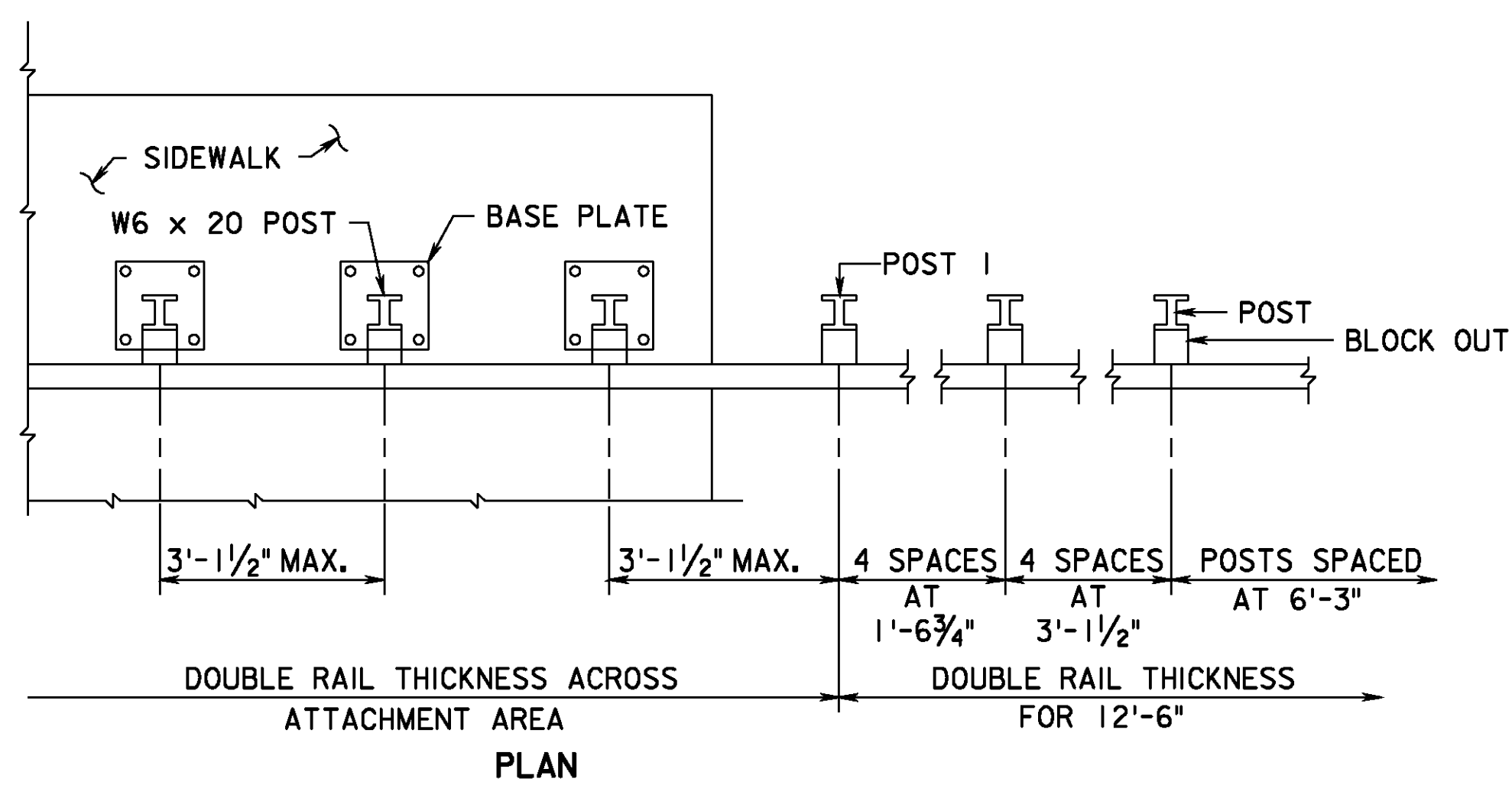
CONSTRUCT PEDESTAL ON EXISTING FOOTING WHERE COVER IS INSUFFICIENT FOR POST EMBEDMENT IN SOIL. SEPARATE PAYMENT WILL NOT BE MADE FOR PEDESTAL.

PEDESTAL HEIGHT	VERTICAL REINFORCEMENT STEEL	STIRRUPS
9" TO 1'-6"	#5	2 - #4
1'-7" TO 2'-6"	#5	3 - #4
2'-7" TO 3'-6"	#5	4 - #4
3'-7" TO 4'-0"	#5	5 - #4

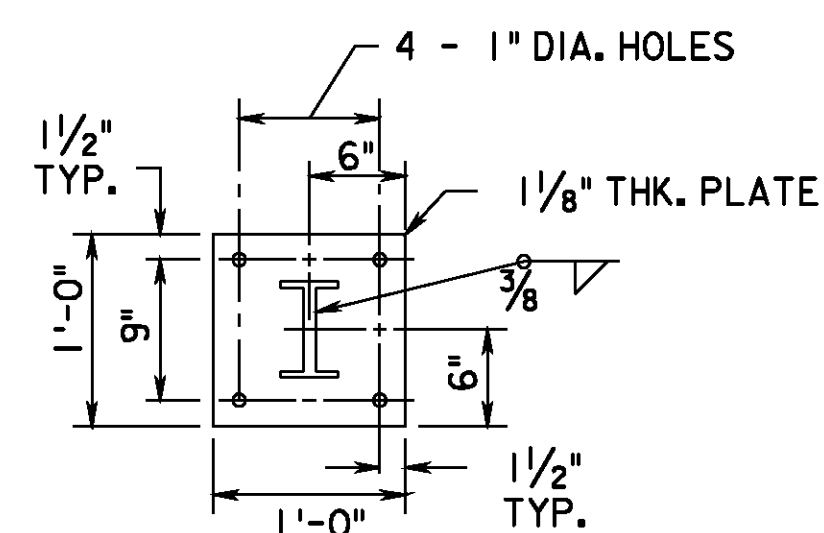
**NOTES:**

- STRUCTURAL STEEL PLATES AND SHAPES SHALL CONFORM TO ASTM A36 AND SHALL BE GALVANIZED PER ASTM A123.
- STEEL BOLTS, NUTS AND WASHERS SHALL CONFORM TO ASTM A307, UNLESS DESIGNATED AS HIGH STRENGTH. HIGH STRENGTH BOLTS, NUTS AND WASHERS SHALL CONFORM TO ASTM A325. HARDWARE AND SHALL BE GALVANIZED PER ASTM A153.
- REINFORCEMENT SHALL CONFORM TO ASTM A 615, GRADE 60.
- FOR GUIDE RAIL ATTACHMENT TO FOOTING DETAIL HIGH STRENGTH BOLTS FOR BASE PLATE ANCHORAGE SHALL BE FULLY THREADED AND INSTALLED IN CORED HOLES NO GREATER THAN THE BOLT DIAMETER PLUS 1/4". CARE SHALL BE EXERCISED TO AVOID DAMAGE TO EXISTING REINFORCEMENT AND CONDUITS. MINIMUM EMBEDMENT LENGTH SHALL BE 6", BOLTS SHALL BE EPOXY GROUTED IN PLACE PER MANUFACTURER'S RECOMMENDATIONS TO ATTAIN A MINIMUM PULLOUT STRENGTH OF 24,000 POUNDS AT THE CONSTRUCTION SITE, AS CERTIFIED BY THE CONTRACTOR.
- FOR GUIDE RAIL ATTACHMENT TO FOOTING DETAIL, HIGH STRENGTH BOLTS FOR THE BASE PLATE ANCHORAGE MAY BE CAST IN PLACE IN FRESH CONCRETE WITH A MINIMUM EMBEDMENT LENGTH OF 20".
- WELDING OF POSTS TO BASE PLATES SHALL CONFORM TO THE ANSI/AASHTO/AWS D1.5 BRIDGE WELDING CODE.
- GARDEN STATE PARKWAY ELEMENTS AND POSTS ARE TO BE WEATHERING STEEL AND HOT DIP GALVANIZED 6" MIN. ABOVE PROPOSED GROUND LINE. REFER TO STANDARD SPECIFICATIONS.
- WHEN THE CONFIGURATION OF BRIDGE ABUTMENTS AND WINGWALLS DO NOT ACCOMMODATE THE INSTALLATION OF POST 1, THE POST MAY BE ATTACHED TO THE ABUTMENT HEADER WITH THE USE OF A BASE PLATE.
- USE "BEAM GUIDE RAIL BRIDGE" ITEM IF SIDEWALK IS ON A STRUCTURE. IF SIDEWALK IS NOT ON A STRUCTURE, USE "BEAM GUIDE RAIL" ITEM AND SIDEWALK SHALL BE MINIMUM 8 INCHES THICK.

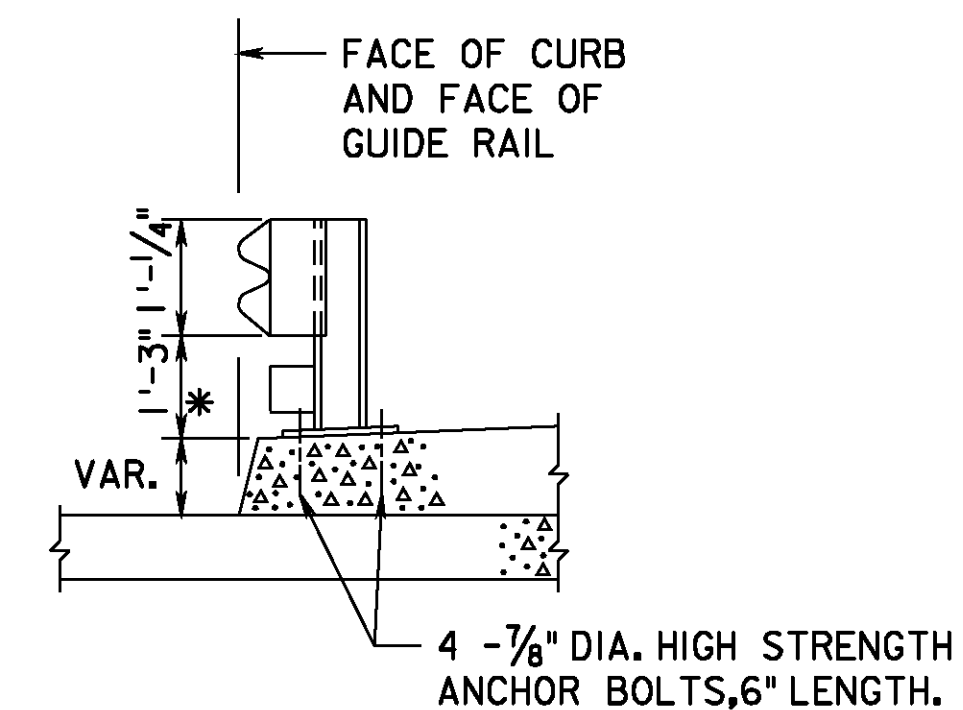
**GUIDE RAIL ATTACHMENT TO FOOTING**



**GUIDE RAIL ATTACHMENT TO SIDEWALK**

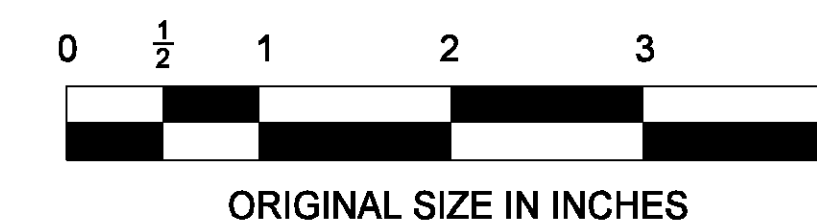


**BASE PLATE**



\* MEASURED FROM TOP OF CURB IF ROADWAY CURB EXISTS, OTHERWISE MEASURED FROM GUTTER LINE.

**SECTION**



NEW JERSEY TURNPIKE AUTHORITY

**BEAM GUIDE RAIL ATTACHMENTS - 1**

OFFICE OF THE CHIEF ENGINEER

2009 STANDARD

DRAWING

GR-10

App.	No.	DATE	REVISION
		04/09	ORIGINAL DRAWING

CONTRACT NO.

SHEET NO.

OF