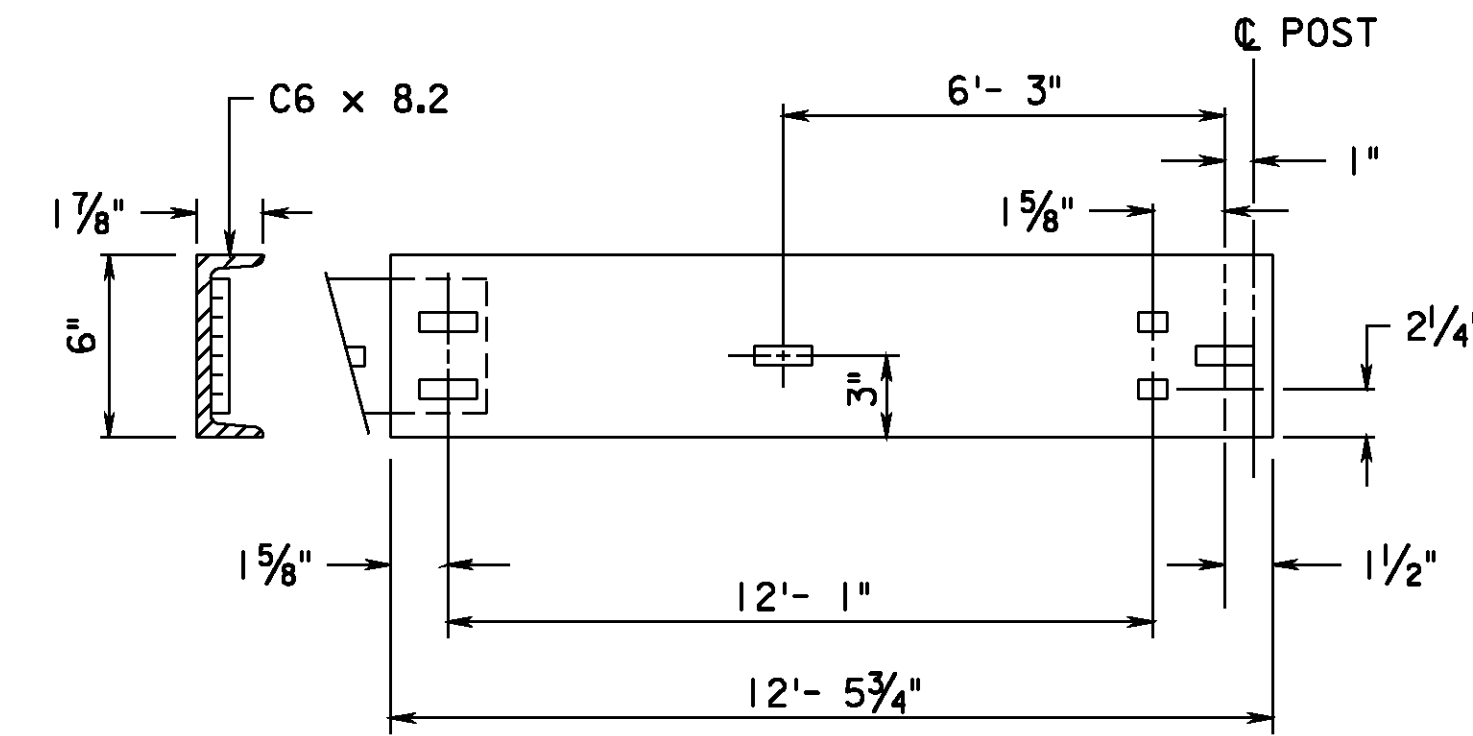


SPLICE PLATE

NOTE:

ALL RECTANGULAR SLOTS ARE 1/16" x 2"
ALL SQUARE HOLES ARE 1/16"



RUB RAIL MAY BE SUPPLIED IN LENGTHS OF 12'- 5 3/4" OR 24'- 11 3/4"

C6 x 8.2

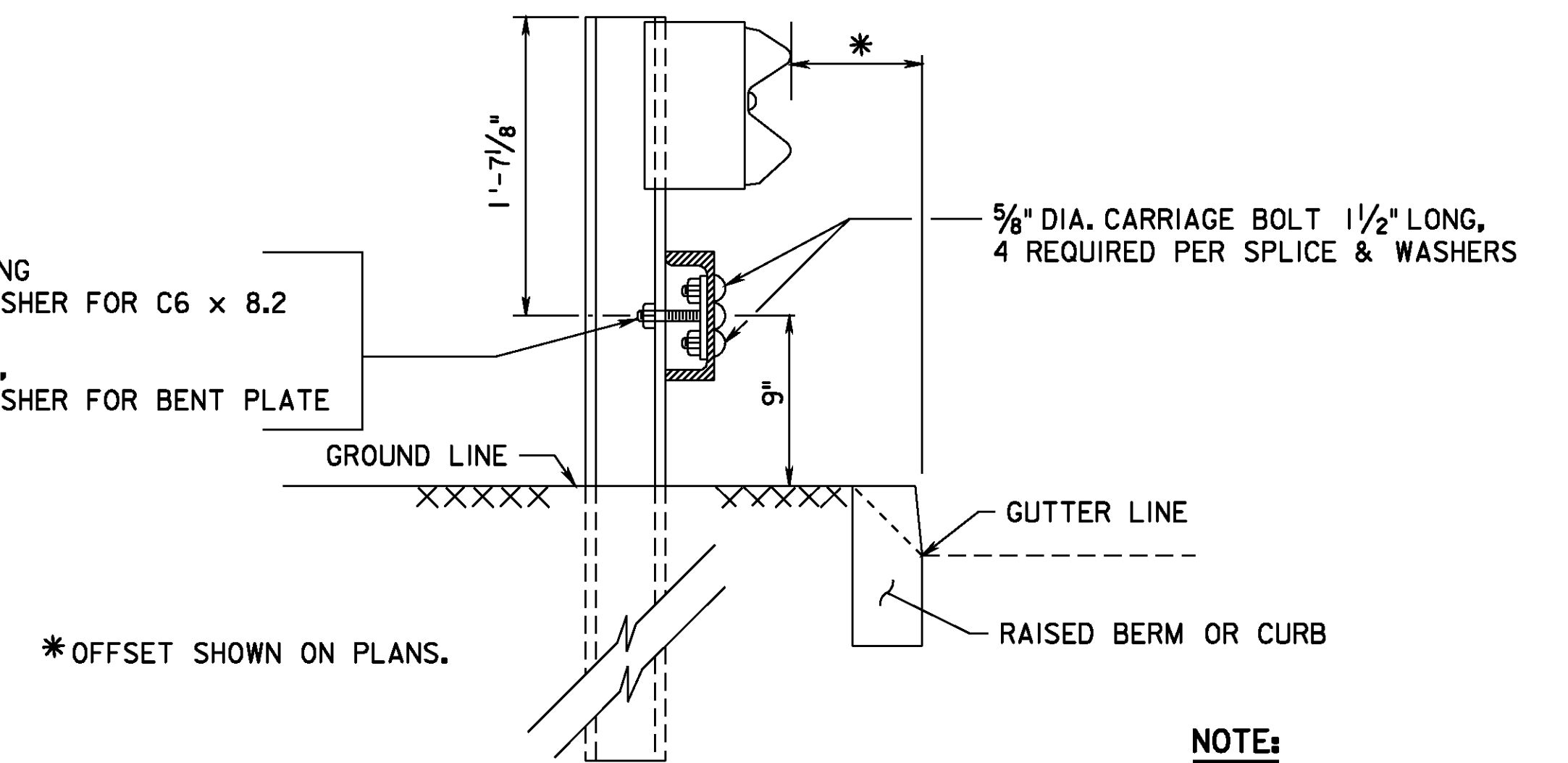
NOTE:

USE EITHER C6 x 8.2 OR BENT PLATE FOR RUB RAIL

5/8" DIA. CARRIAGE BOLT 3" LONG
1 REQUIRED PER POST & WASHER FOR C6 x 8.2

5/8" CARRIAGE BOLT 4 1/2" LONG,
1 REQUIRED PER POST & WASHER FOR BENT PLATE

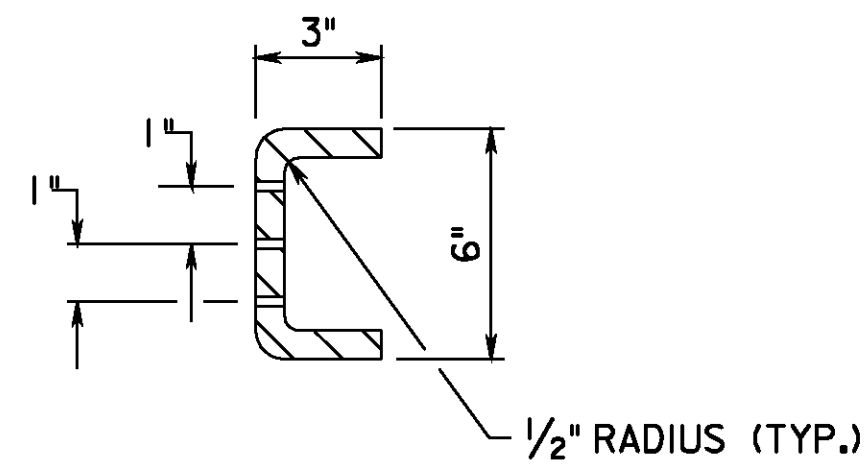
* OFFSET SHOWN ON PLANS.



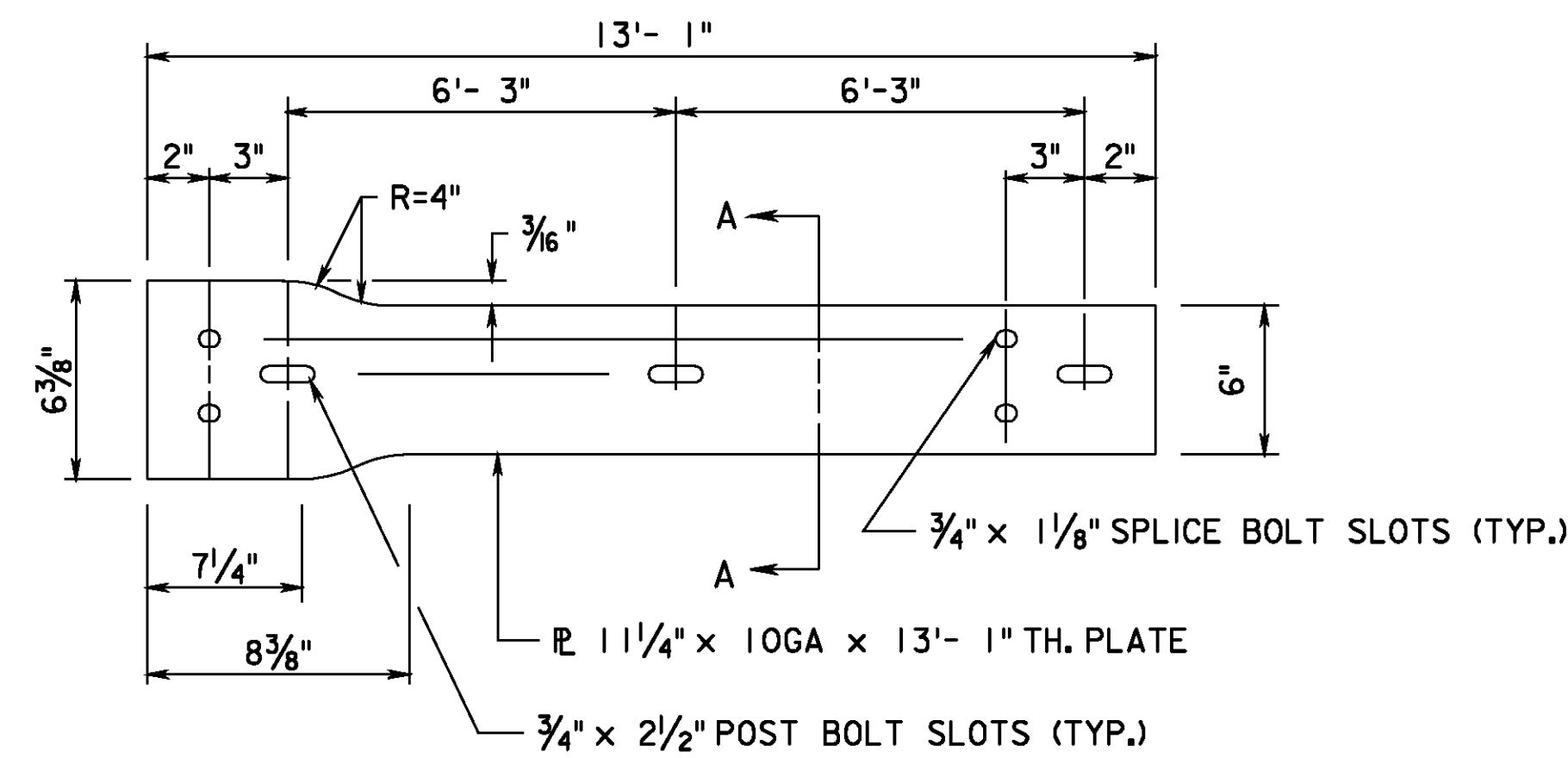
NOTE:

USE EITHER C6 x 8.2 OR BENT PLATE FOR RUB RAIL

RUB RAIL SECTION



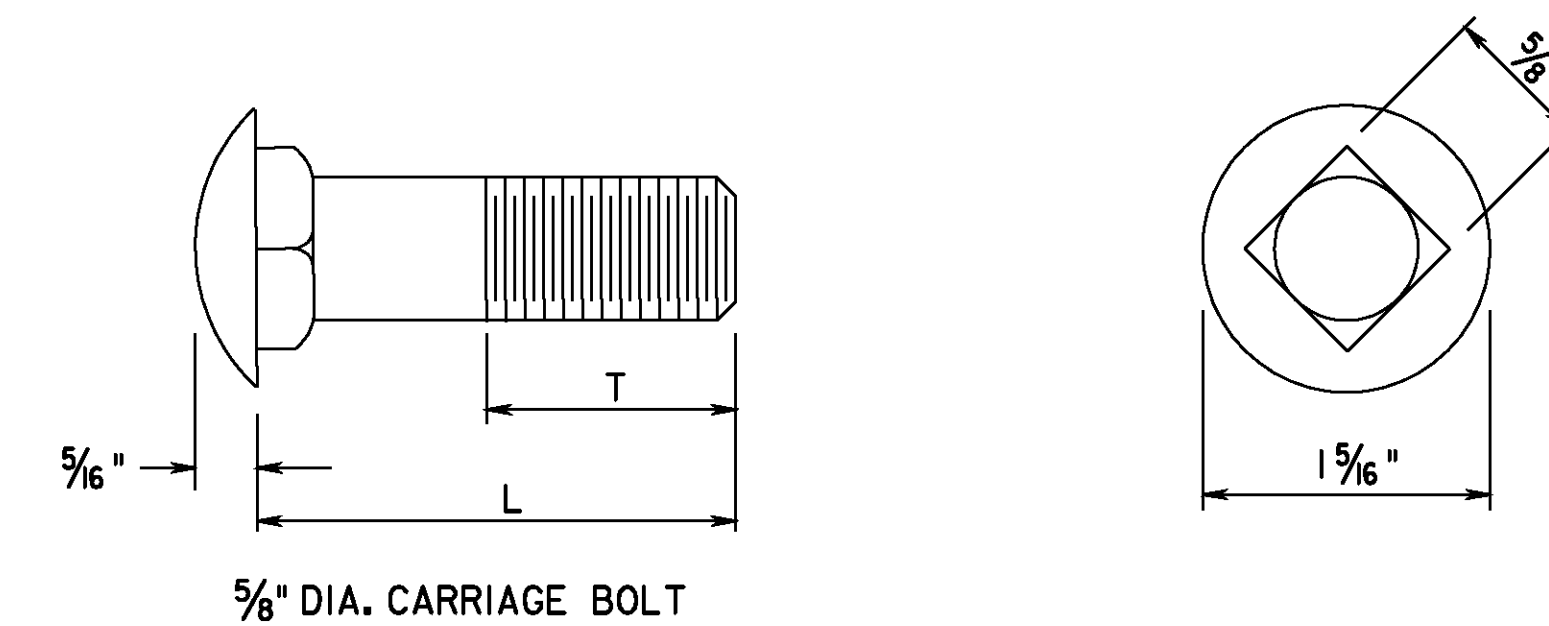
SECTION A-A



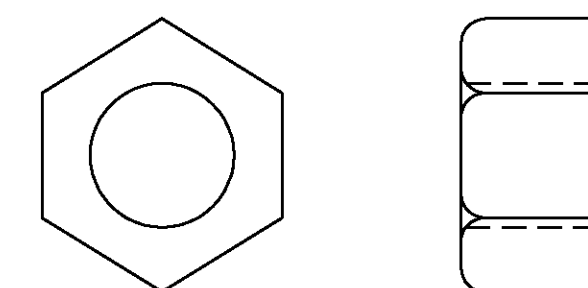
BENT PLATE

NOTE:

USE EITHER C6 x 8.2 OR BENT PLATE FOR RUB RAIL



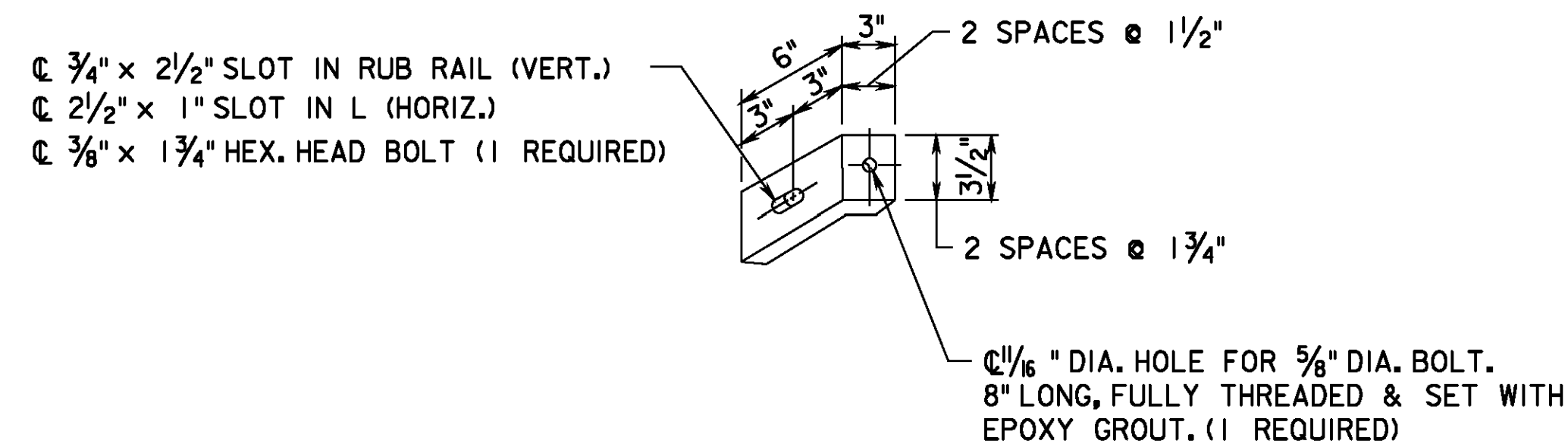
5/8" DIA. CARRIAGE BOLT



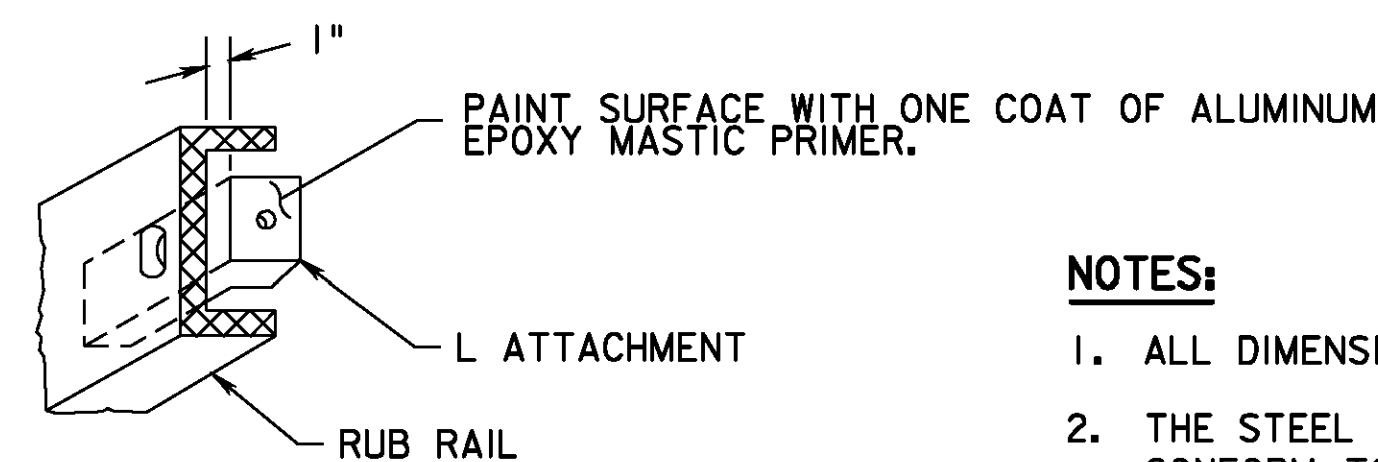
5/8" DIA. HEX NUT

| L | THREAD LENGTH (T) |
|--------|-------------------|
| 1 1/2" | FULL LENGTH |
| 3" | 1 1/2" MIN. |
| 4 1/2" | 1 1/2" MIN. |

CARRIAGE BOLT DETAIL

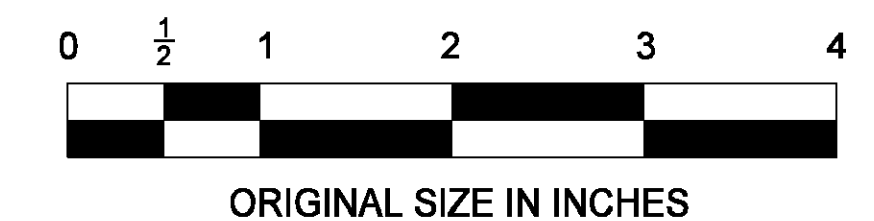


RUB RAIL ANGLE ATTACHMENT



NOTES:

- ALL DIMENSIONS ARE SUBJECT TO MANUFACTURING TOLERANCES.
- THE STEEL FOR RAIL ELEMENTS AND BOLTS SHALL CONFORM TO NEW JERSEY TURNPIKE AUTHORITY (NJTA) STANDARD SPECIFICATIONS AND ITS AMENDMENTS.
- GARDEN STATE PARKWAY ELEMENTS AND POSTS ARE TO BE WEATHERING STEEL AND HOT DIP GALVANIZED 6" MIN. ABOVE PROPOSED GROUND LINE. REFER TO STANDARD SPECIFICATIONS.



ORIGINAL SIZE IN INCHES

| App. | No. | DATE | REVISION |
|------|-----|-------|------------------|
| | | 04/09 | ORIGINAL DRAWING |

CONTRACT NO.

| | |
|-------------------------------|---|
| NEW JERSEY TURNPIKE AUTHORITY | |
| RUB RAIL | |
| OFFICE OF THE CHIEF ENGINEER | 2009 STANDARD DRAWING GR-3 |

SHEET NO.

OF