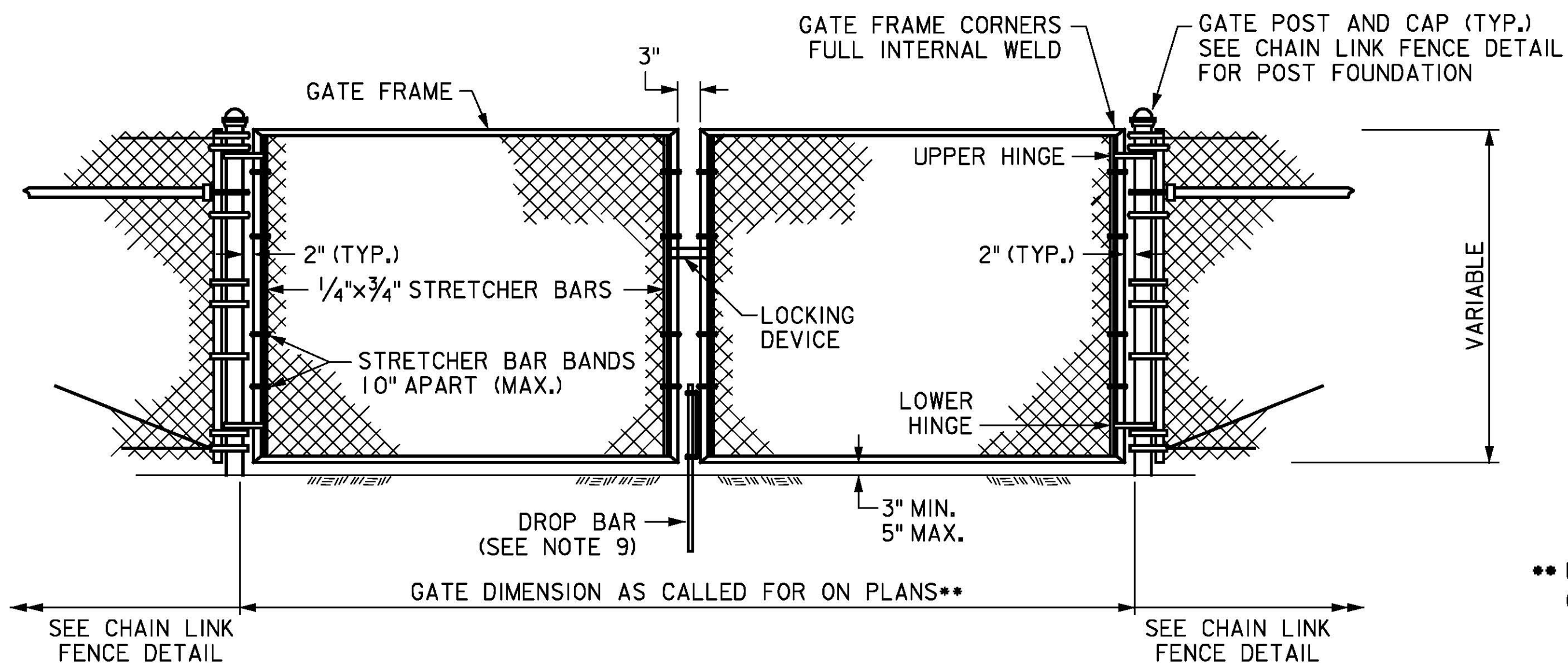


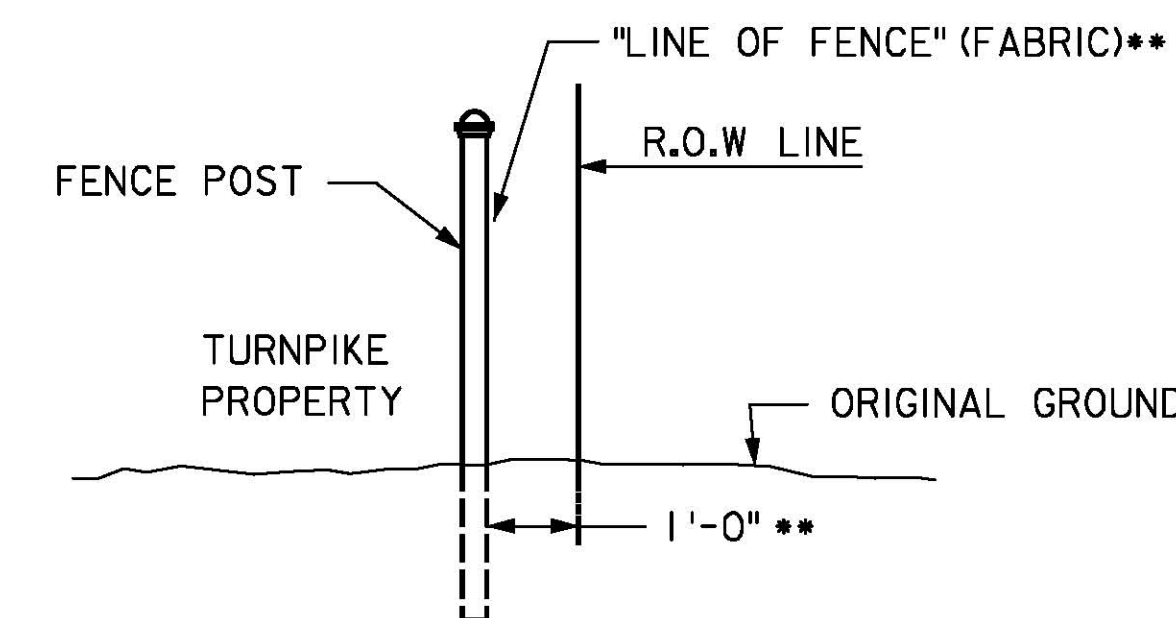
SINGLE GATE FOR CHAIN LINK FENCE

* PEDESTRIAN GATE SHALL BE 4'-0" WIDE AND VEHICULAR GATE SHALL BE 12'-0" WIDE UNLESS NOTED ON PLANS (SEE NOTE 6).



DOUBLE GATE FOR CHAIN LINK FENCE

** DOUBLE GATE SHALL BE USED FOR VEHICULAR GATES GREATER THAN 20'-0" WIDE (SEE NOTE 6).

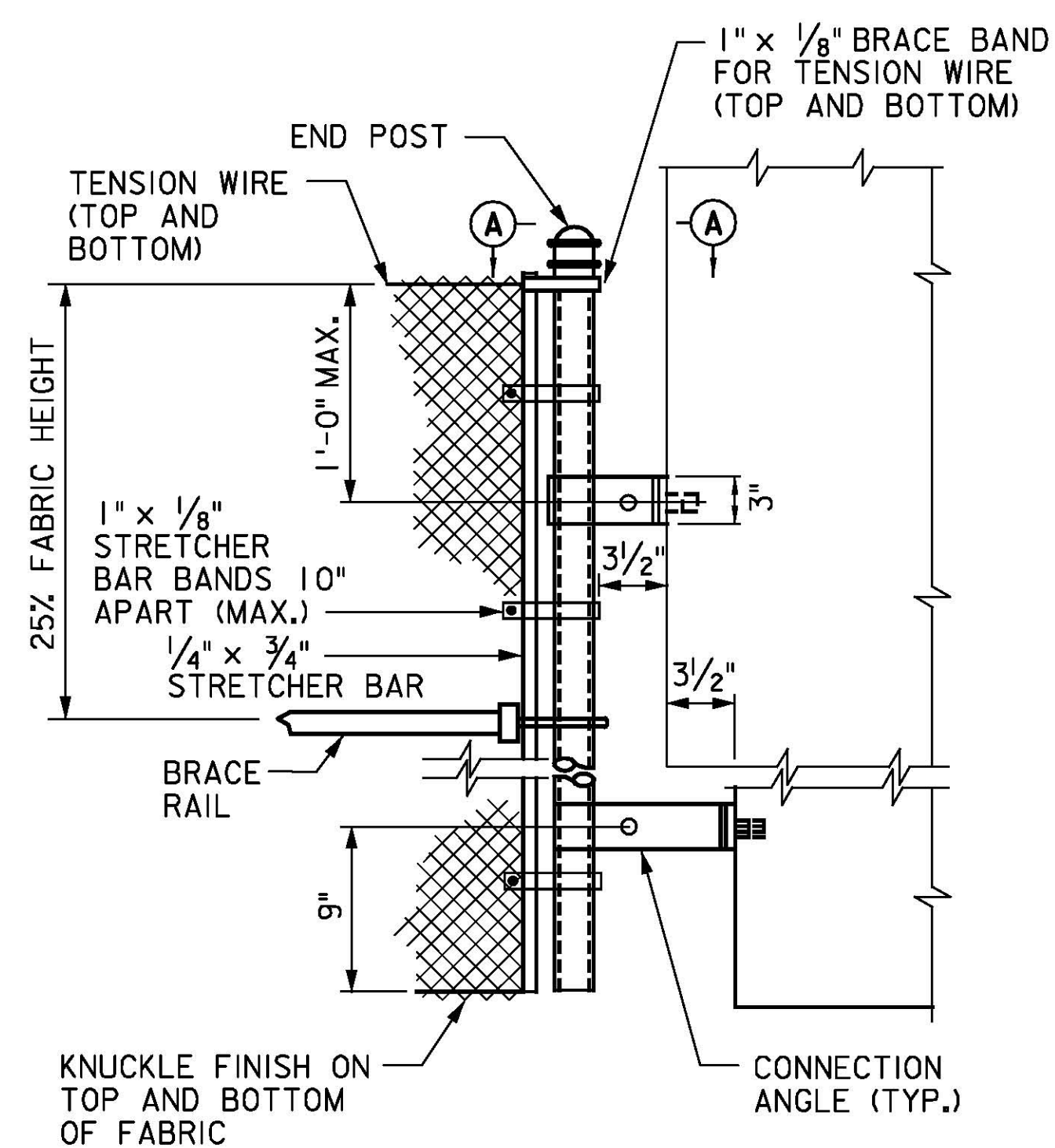


** UNLESS DIRECTED OTHERWISE ON PLANS

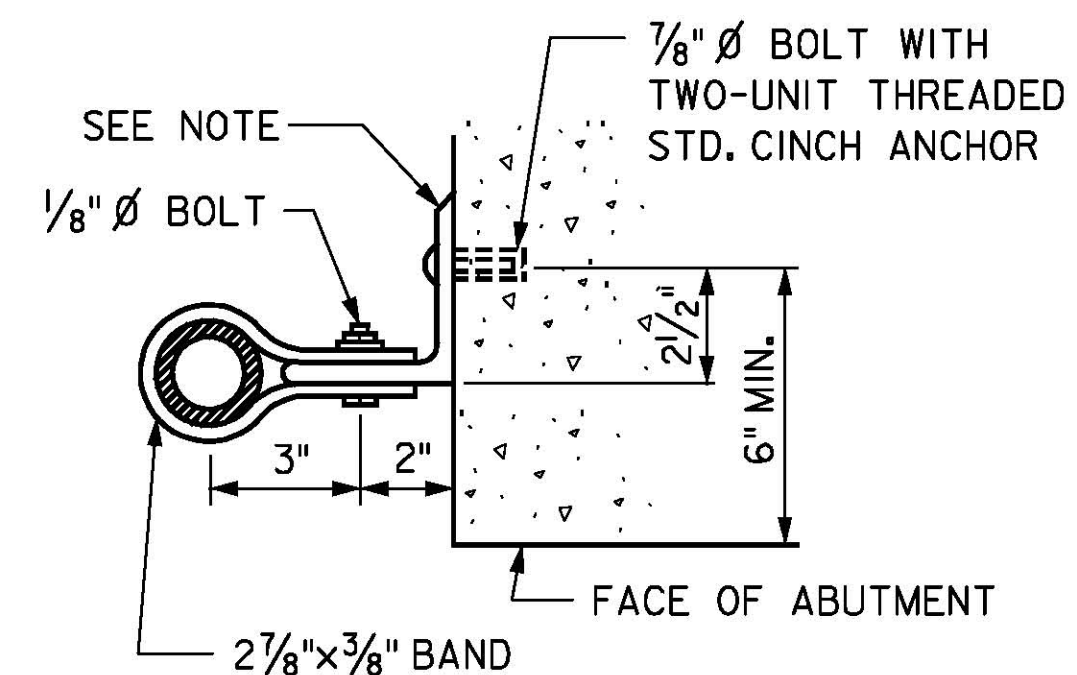
TYPICAL FENCE SECTION AT R.O.W. LINE

NOTES:

1. FOR POST AND RAIL SIZES AND FOR EMBEDMENT DIMENSIONS, SEE STANDARD DRAWING FE-1.
2. FOR FENCE MATERIAL, SEE SPECIFICATIONS.
3. PULL POSTS SHALL BE PLACED APPROXIMATELY 500' APART IN STRAIGHT RUNS AND AT EACH VERTICAL CHANGE OF 15 DEG. OR MORE. CORNER POSTS SHALL BE PLACED AT EACH HORIZONTAL ANGLE OF 15 DEG. OR MORE.
4. FOR DRIVE ANCHOR SHOE ASSEMBLIES, SEE STANDARD DRAWING FE-1.
5. 48" C.L. FENCE SHALL USE A TOP RAIL IN LIEU OF THE TOP TENSION WIRE. TOP RAIL TO BE INSTALLED AS PER THE MANUFACTURER'S SPECIFICATIONS.
6. INTERIOR BRACING OF SINGLE AND DOUBLE GATES SHALL BE INSTALLED AS REQUIRED BY THE MANUFACTURER'S SPECIFICATIONS.
7. THE DEPTH OF CONCRETE FOOTINGS IN SOLID ROCK MAY BE REDUCED TO ONE FOOT BELOW THE TOP OF ROCK.
8. BRACE BANDS AND STRETCHER BAR BANDS SHALL BE FURNISHED WITH 5/16" DIA. CARRIAGE BOLTS AND ELASTIC STOP NUTS.
9. DROP BAR TO BE PROVIDED FOR DOUBLE GATES AS PER THE MANUFACTURER'S SPECIFICATIONS.
10. TRUSS ROD AND TENSION WIRE CONNECTIONS SHALL BE INSTALLED AS PER MANUFACTURER'S SPECIFICATIONS.



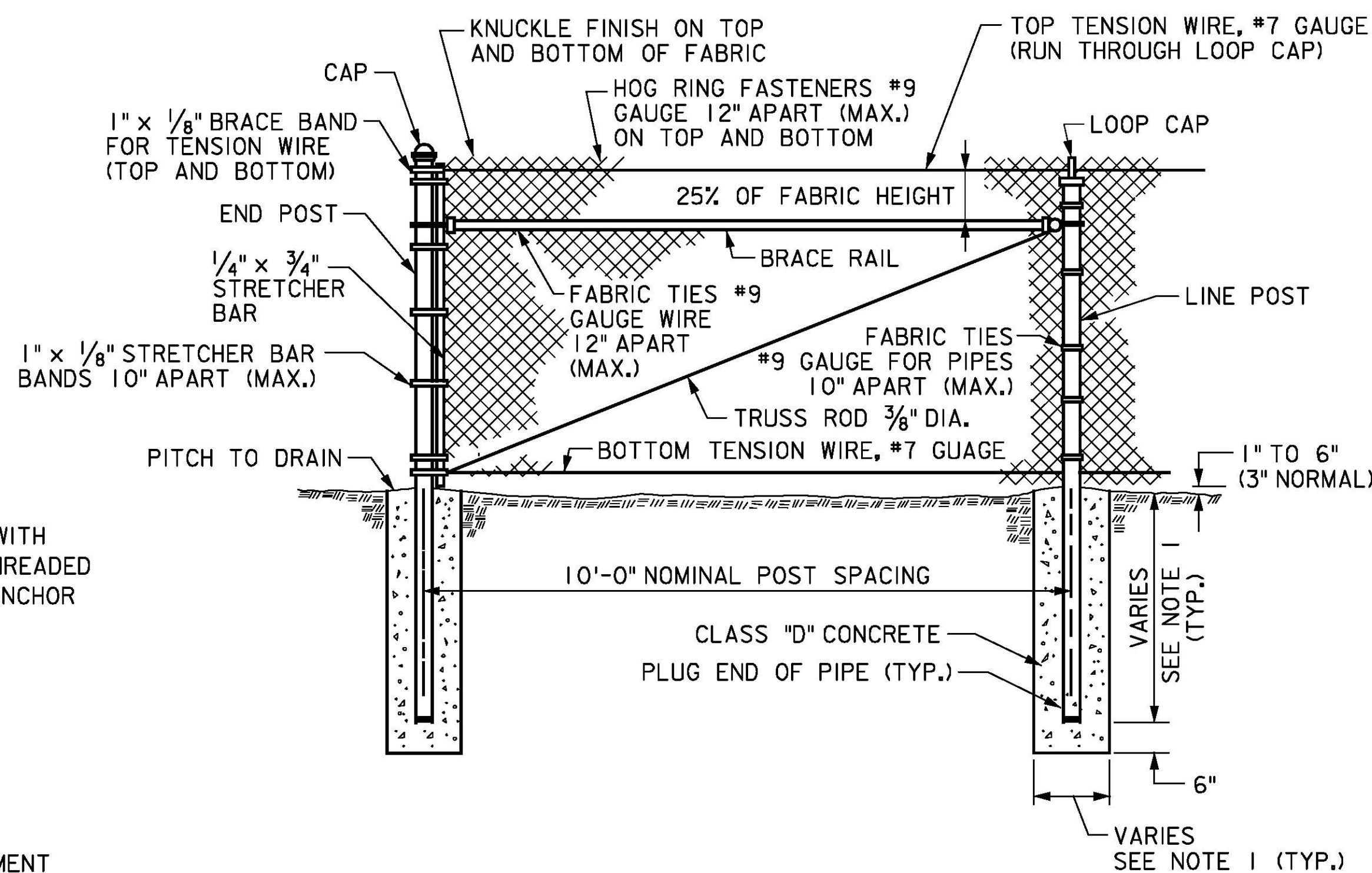
ABUTMENT CONNECTION



SECTION A-A

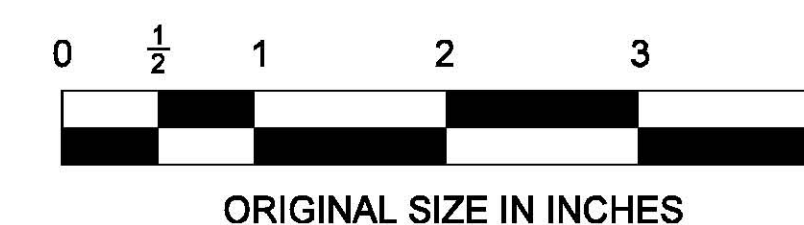
NOTE:

ALL TOP CONN. ANGLES TO BE L4"x 3 1/2" x 1/16" IF TOP CONN. OCCURS BELOW WINGWALL RUSTICATIONS, BOTTOM CONN. ANGLE SHALL ALSO BE L4"x 3 1/2" x 3/16". IF TOP CONN. OCCURS ABOVE RUSTICATIONS, BOTTOM CONN. ANGLE SHALL BE L7"x4"x 3/8".



CHAIN-LINK FENCE

(84" AND 96" FENCE SHOWN, SEE NOTE 5)



App. No.	DATE	REVISION
1	11/10	ADDED DOUBLE GATE DETAIL, MODIFIED DETAILS FOR CHAIN LINK FENCE, SINGLE GATE & ABUT. CONN. DETAILS, REMOVED FARM FENCE
	04/09	ORIGINAL DRAWING

NEW JERSEY TURNPIKE AUTHORITY

CHAIN LINK FENCE DETAILS - 2

OFFICE OF THE CHIEF ENGINEER

2009 STANDARD DRAWING

FE-2

CONTRACT NO.

SHEET NO.

OF