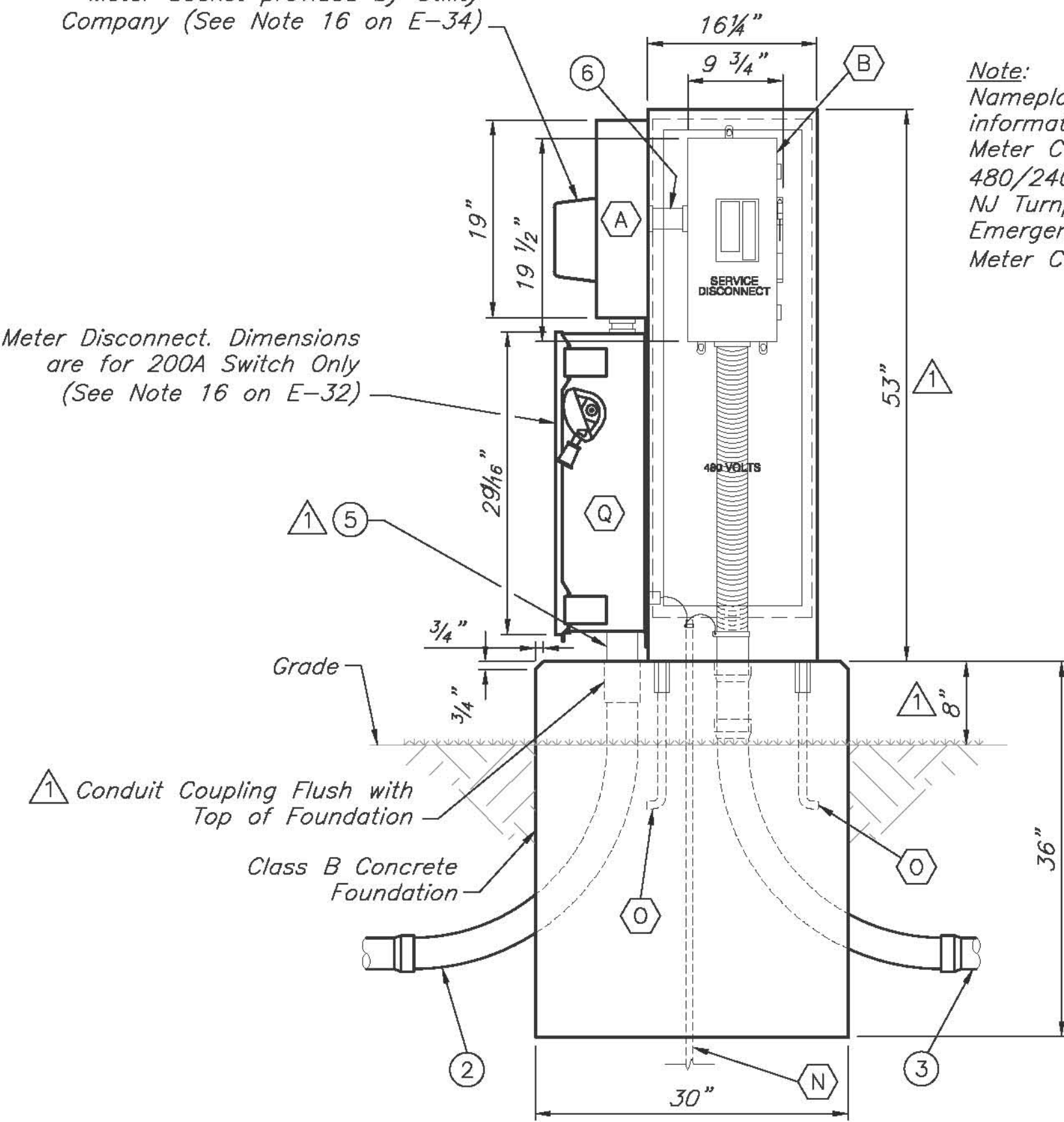


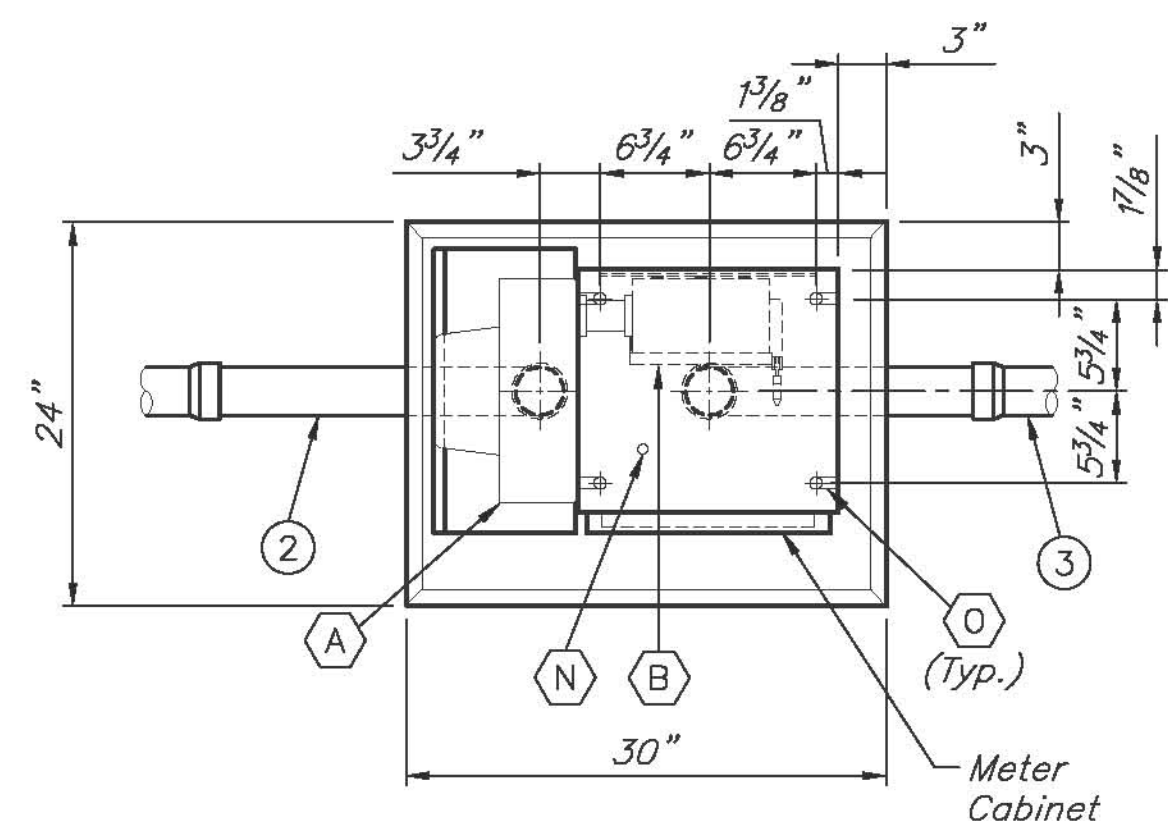
Meter Socket provided by Utility Company (See Note 16 on E-34)

Meter Disconnect. Dimensions are for 200A Switch Only (See Note 16 on E-32)



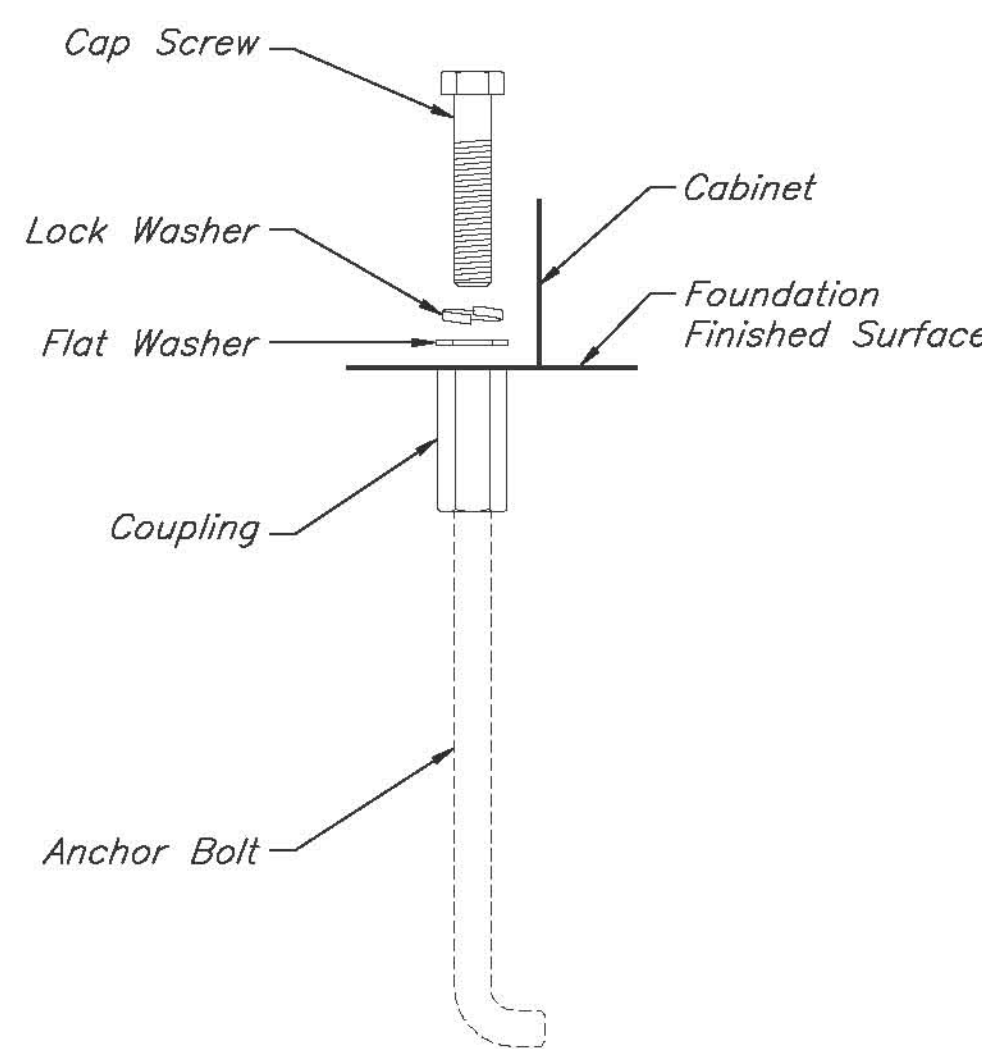
ELEVATION
Scale: 1"=1'-0"

Note:
Nameplate mounted on the cabinet door shall have information as:
Meter Cabinet
480/240/208V, (1-Phase or 3-Phase)
NJ Turnpike
Emergency Contact: TP operations 800-352-4848
Meter Cabinet Name: (i.e. "Local Road Name" Meter Cabinet or "Milepost" Meter Cabinet, if not close to local road)

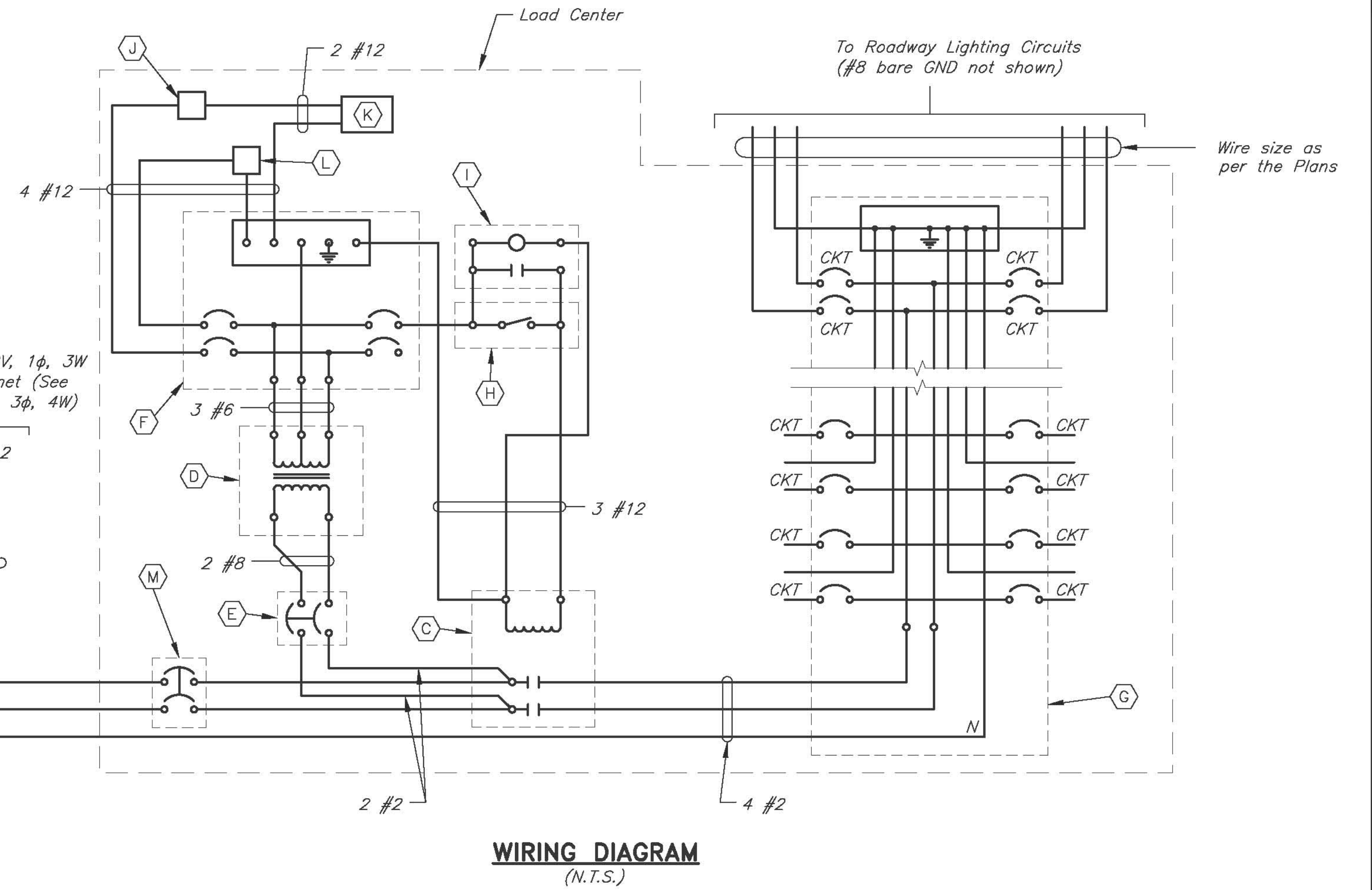


PLAN
Scale: 1"=1'-0"

NJTA METER CABINET TYPE G AND FOUNDATION



ANCHOR BOLT ASSEMBLY
(SCALE: 3"= 1'-0")



WIRING DIAGRAM
(N.T.S.)

120/240V or 240/480V, 1φ, 3W from NJTA Meter Cabinet (See Note 2 for 120/208V, 3φ, 4W)

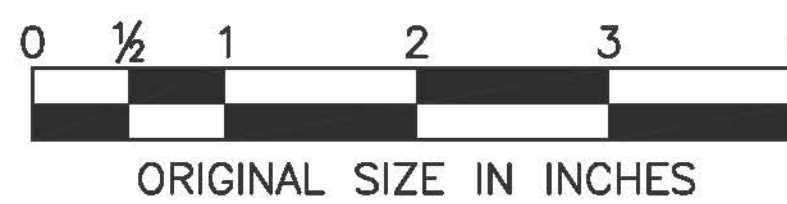
4 #2 (Or as specified on the Contract Drawings)

Ground per Manufacturer's instructions

If you use this Standard Drawing:		
You also need	E-34	
You may need	E-01	

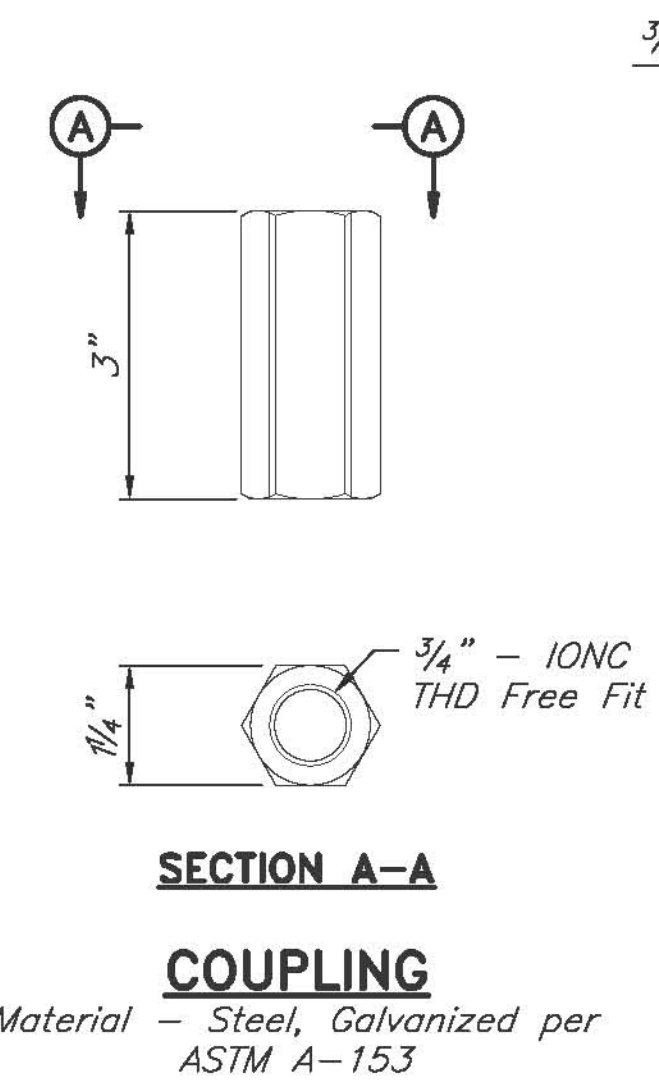
NOTES

- See E-34 for legend and notes.
- Refer to Type F load center wiring diagram for 3φ, 4wire, 120/208V system. Designer to modify the wiring diagram as required.

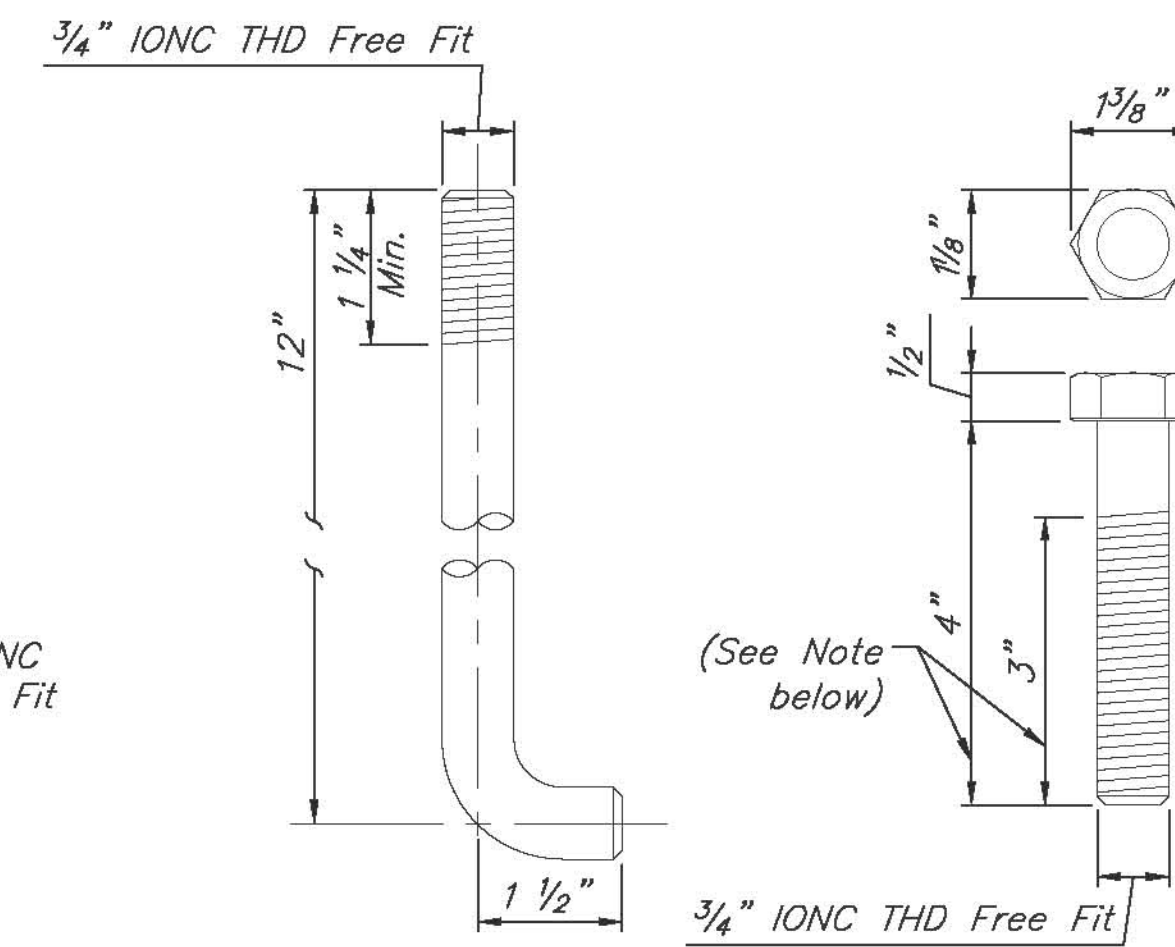


APP.	NO.	DATE	REVISION
	0	08/2012	ADD METER DISCONNECT, UPDATE CALLOUTS
	0	05/2009	ORIGINAL DRAWING

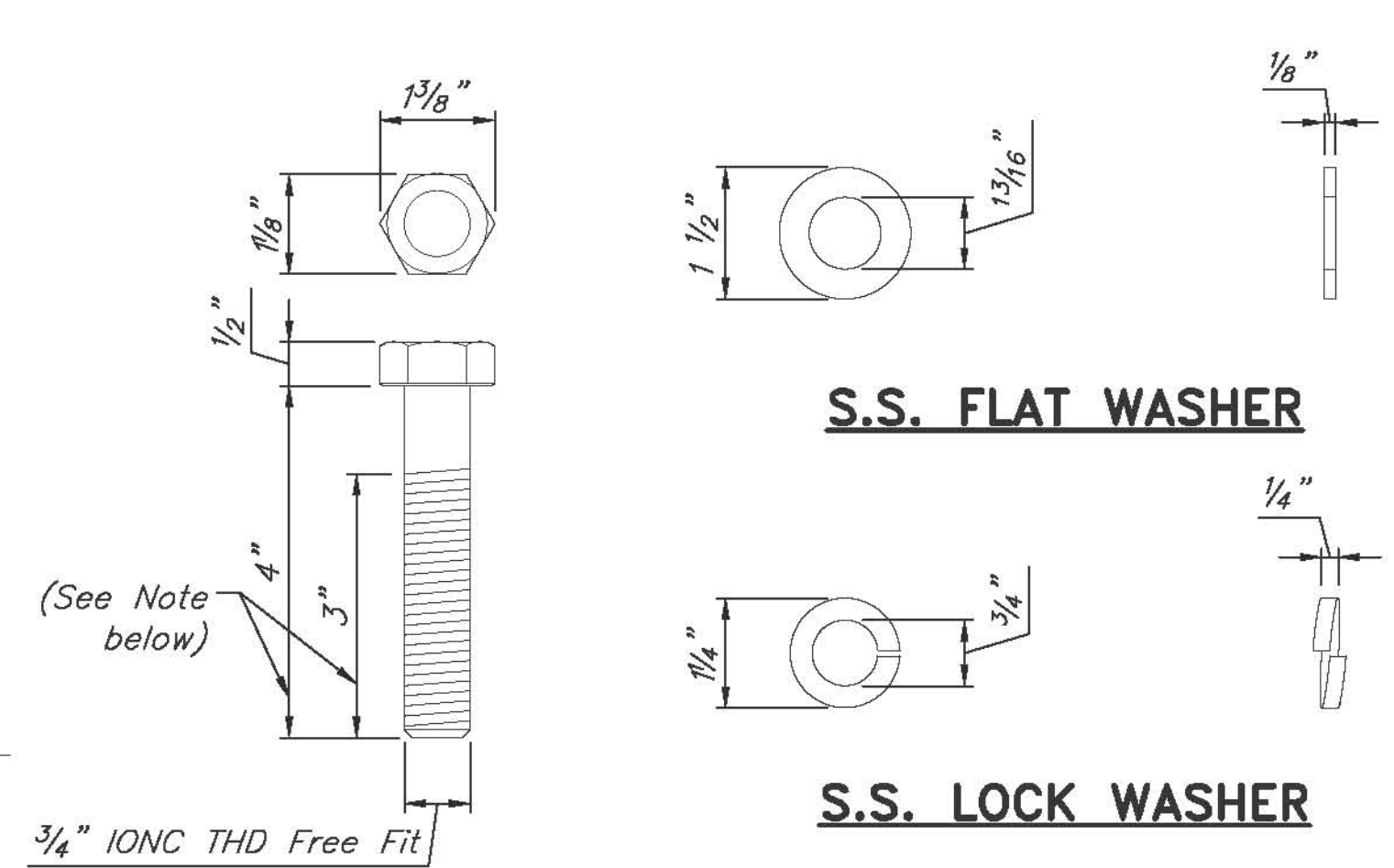
Note:
Dimensions may vary to accommodate the Meter Cabinet supplied.



SECTION A-A
COUPLING
Material - Steel, Galvanized per ASTM A-153



ANCHOR BOLT
Material: ASTM A-307 Steel with ASTM 563 Nuts and ASTM F436 Washers, Galvanized per ASTM A153.



CAP SCREW
Material: Stainless Steel, Type 304 per ASTM A-193, Grade B-8

NEW JERSEY TURNPIKE AUTHORITY
NEW JERSEY TURNPIKE
TYPE G LOAD CENTER
DETAILS-2

HNTB 145 RT. 46 WEST, SUITE 400, WAYNE, NJ 07470 - CON# 240A28000700
ANTHONY L. BARTELLO
New Jersey Professional Engineer License No. CE 40842

STANDARD DRAWING
E-35