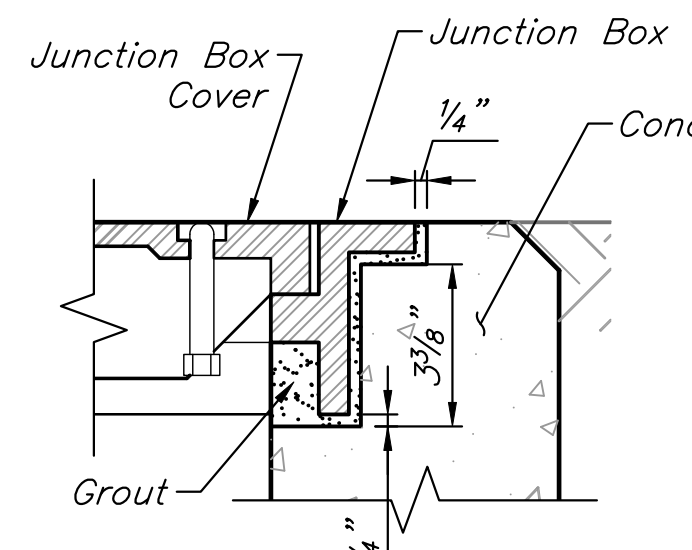
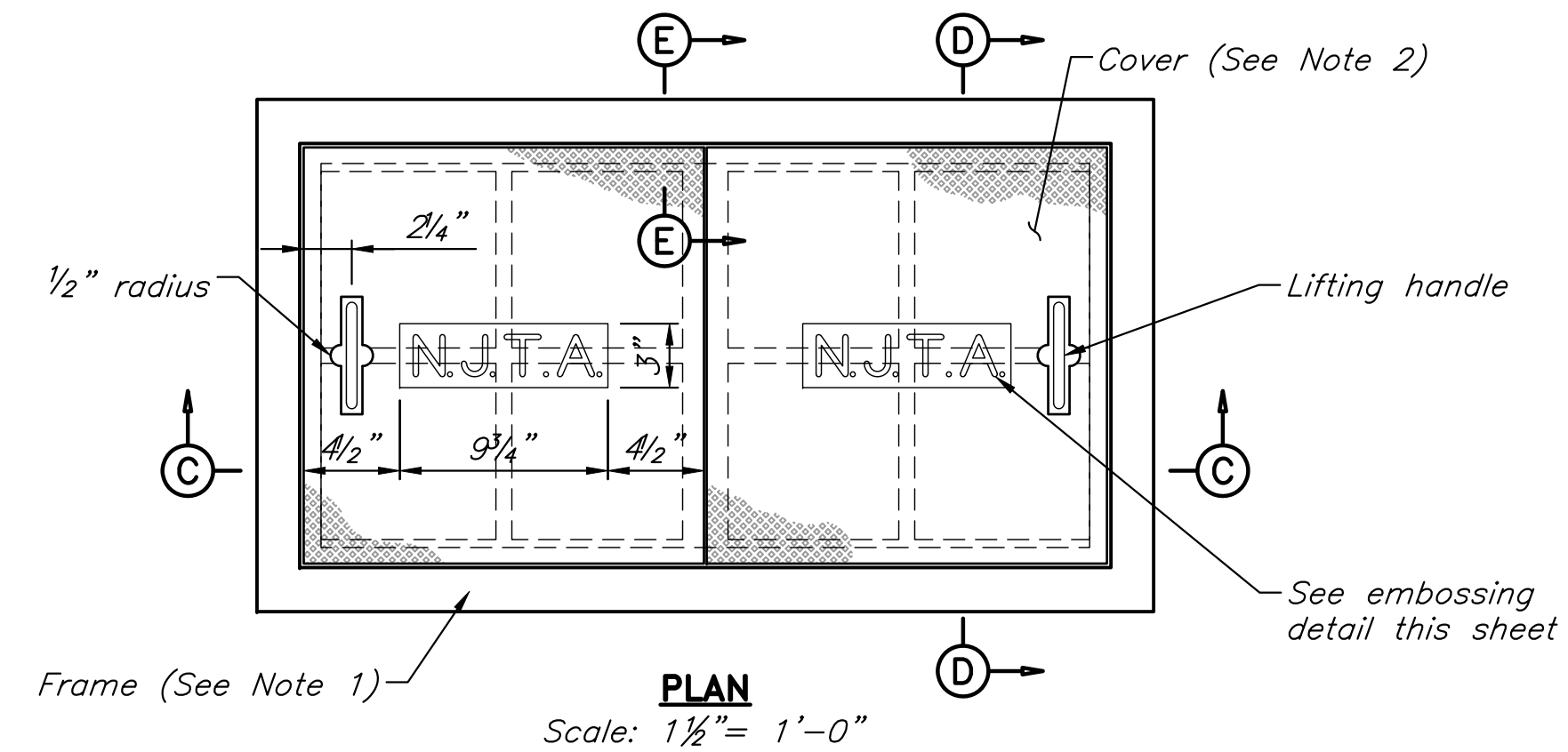


**SECTION A-A**

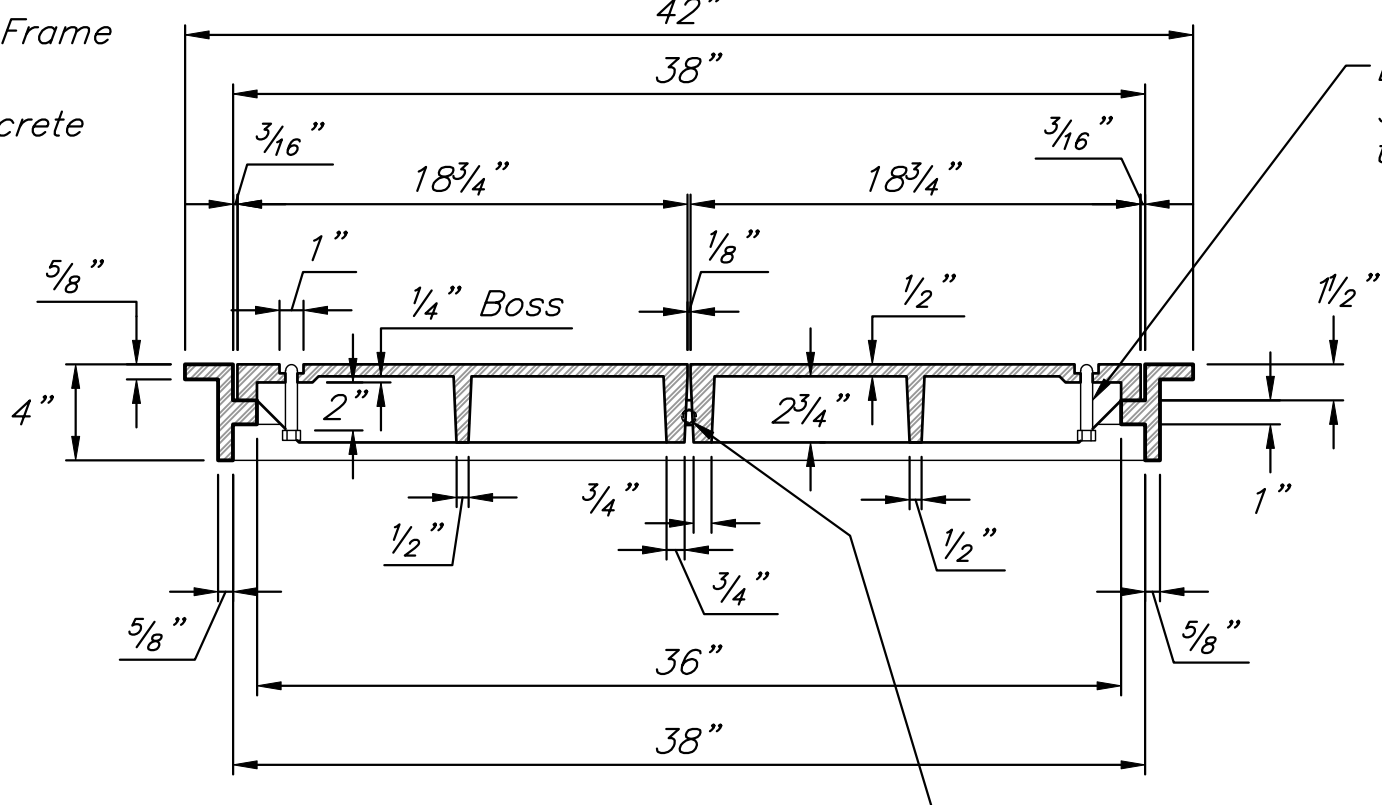
**SECTION B-B**



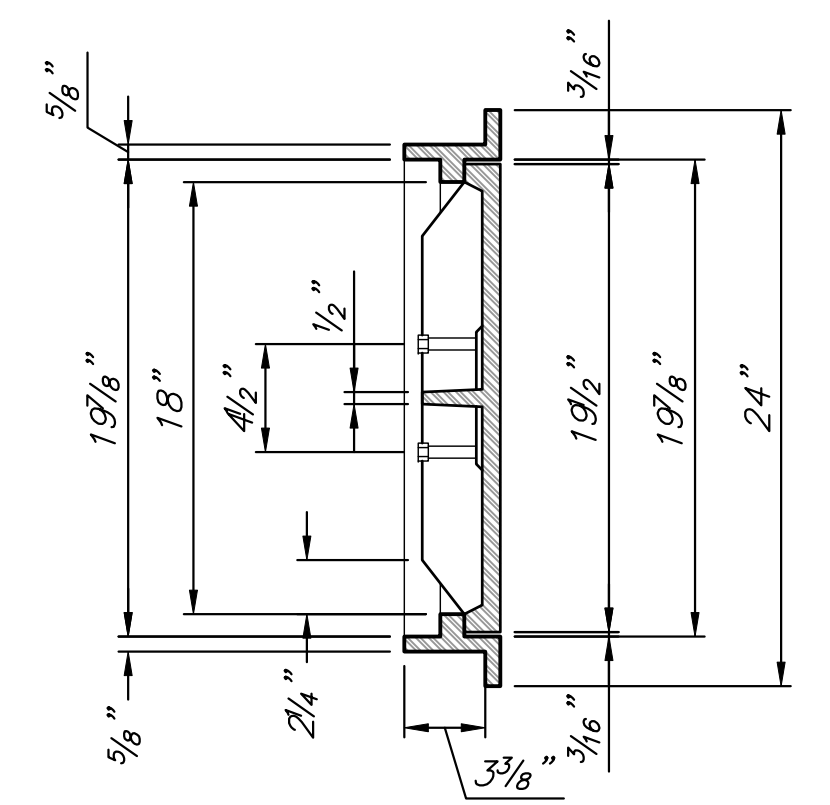
**DETAIL A - FRAME GROUTING**  
Scale: 1 1/2" = 1'-0"



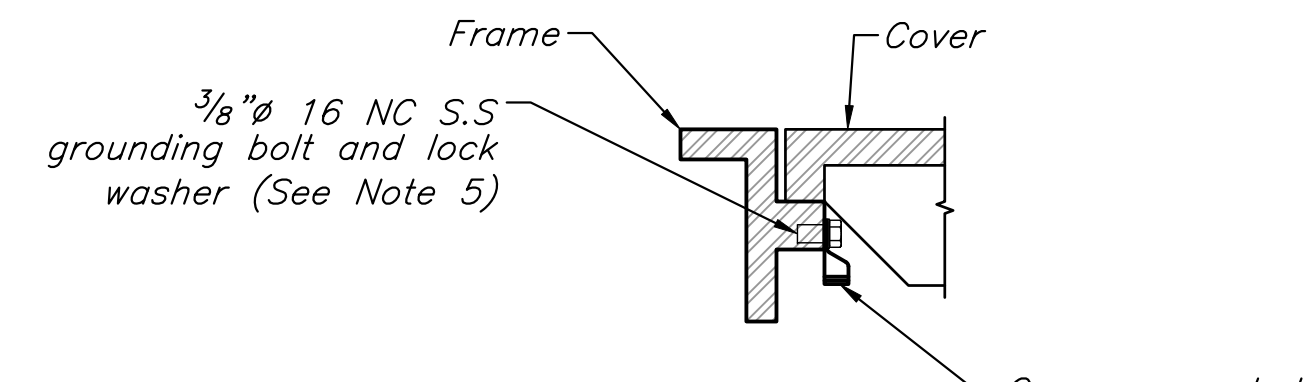
**PLAN**  
Scale: 1 1/2" = 1'-0"



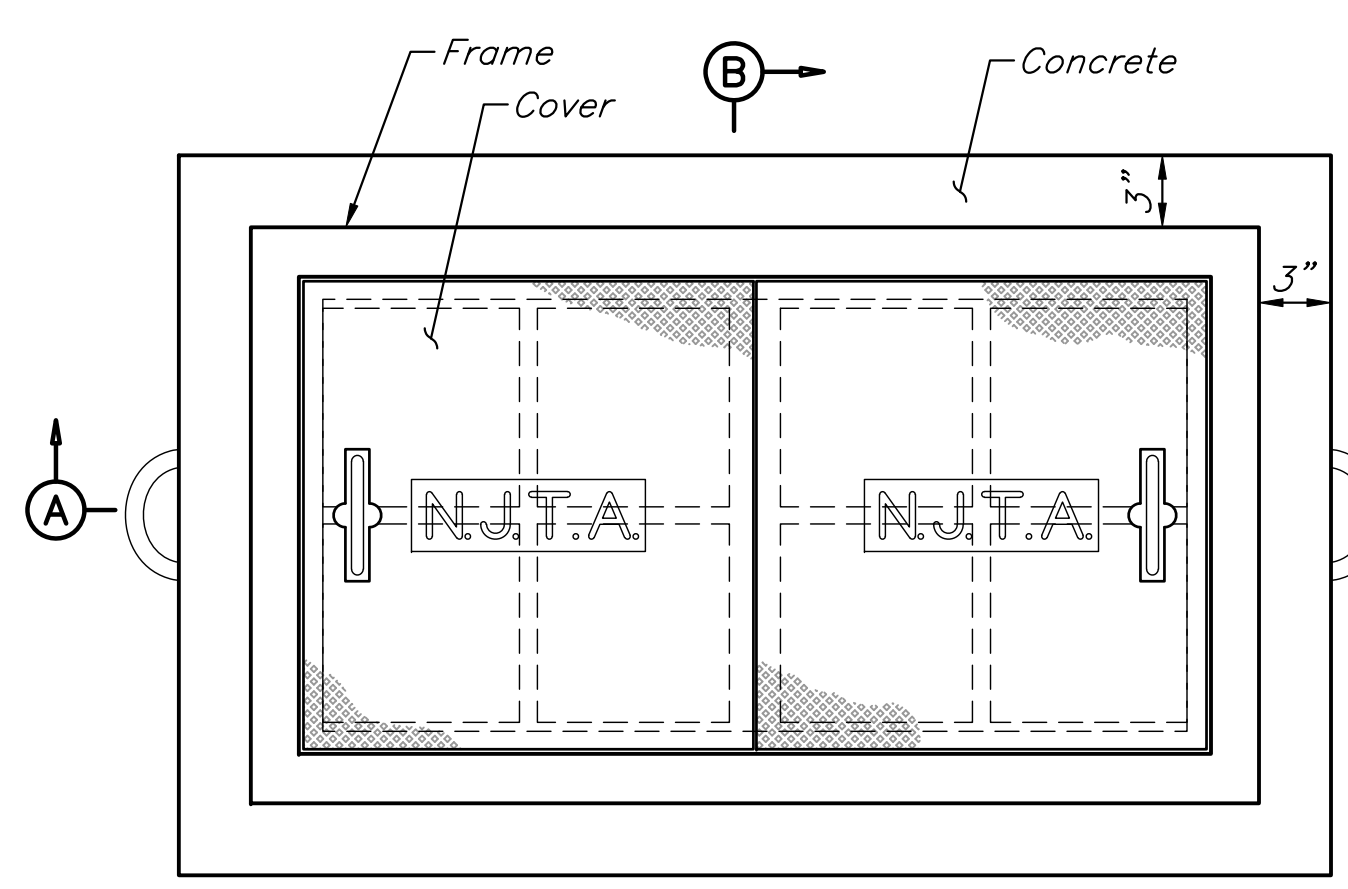
**SECTION C-C**  
Scale: 1 1/2" = 1'-0"



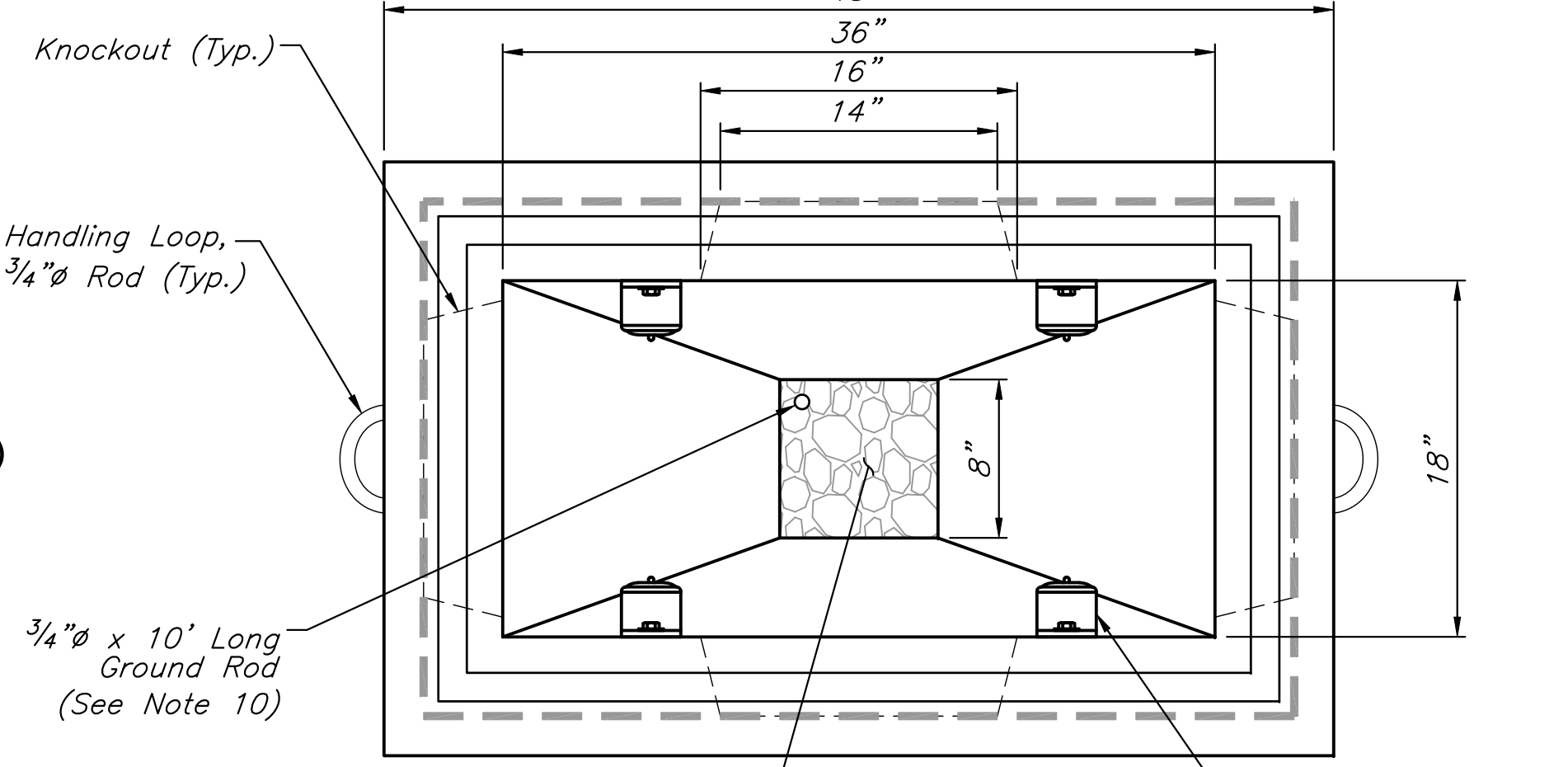
**SECTION D-D**  
Scale: 1 1/2" = 1'-0"



**SECTION E-E**  
Scale: 3" = 1'-0"



**PLAN WITH COVER**



**PLAN WITH COVER REMOVED**

**JUNCTION BOX TYPE C (18"x36") WITH FRAME AND COVER**

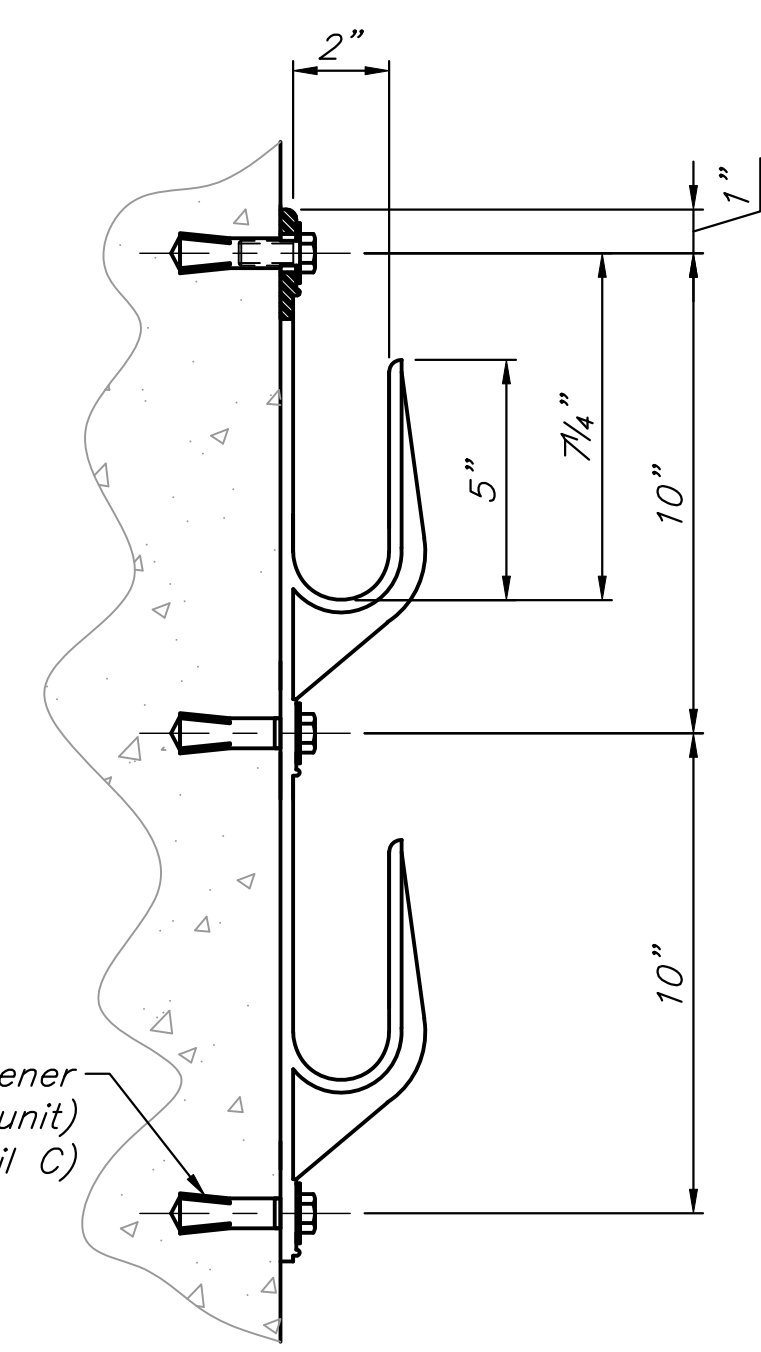
Scale: 1 1/2" = 1'-0"

**JUNCTION BOX AND JUNCTION BOX FOUNDATION FRAME AND COVER**

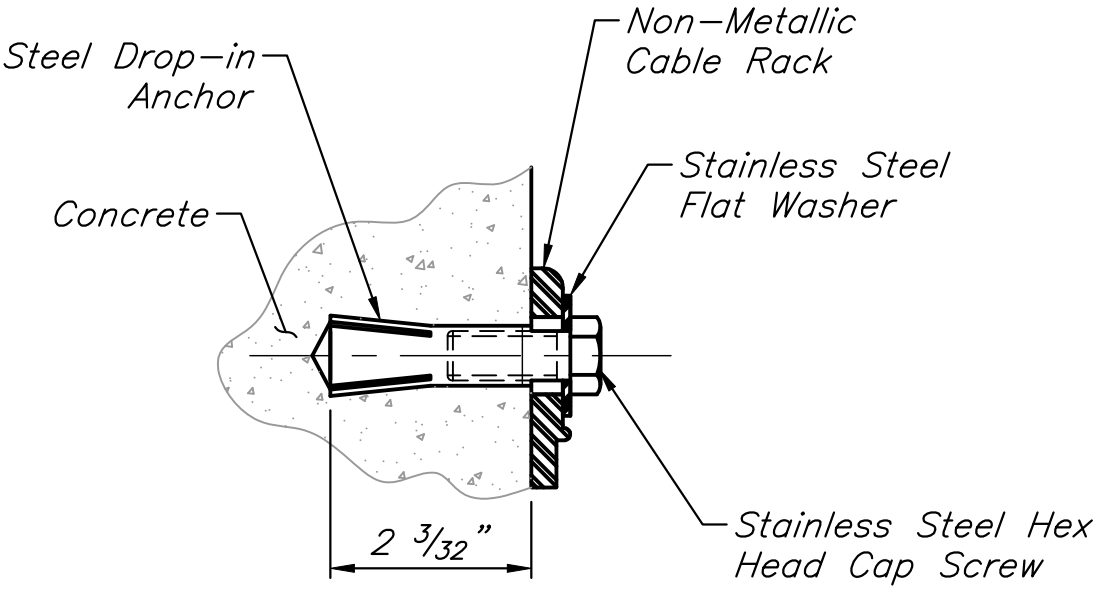
Scale: As-Shown

**NOTES**

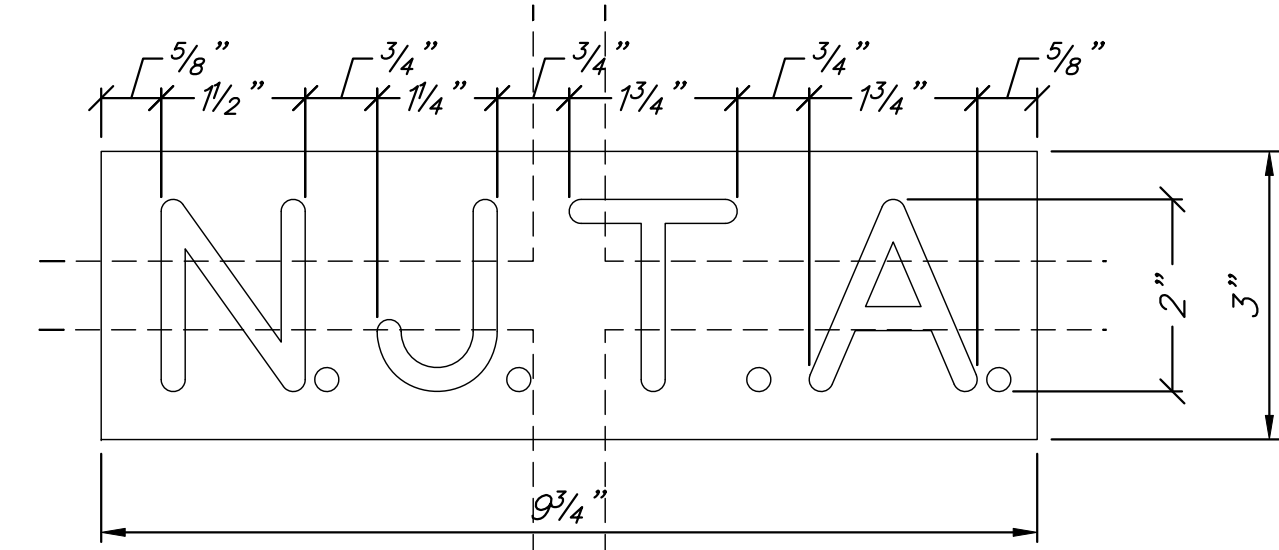
- The frame casting shall be gray iron ASTM A48, Class 30B.
- The cover casting(s) shall be ductile iron ASTM A536, Grade 65-45-12.
- Both the frame and cover castings shall be hot dipped galvanized in accordance with ASTM A153. The frame and cover shall be cast within a tolerance of  $\pm 1/16$ " of the dimensions shown on this sheet.
- The cover shall have a load rating matching or exceeding the requirements of AASHTO H20-44.
- Ground lug shall be as manufactured by Thomas & Betts catalog #54132. It shall be secured to the frame using a 3/4" stainless steel bolt and lock washer as provided by the frame manufacturer.
- All stainless steel hardware shall be Type 304 in accordance with ASTM A193, Grade B8.
- The junction box may be constructed with either knockouts sized as shown on this sheet or with individual conduit knockouts. If manufactured with individual conduit knockouts, a minimum of ten (10) knockouts shall be available, divided among the four walls of the junction box. The conduit knockouts shall be sized to fit a 3" conduit at a minimum.
- Cable racks shall be model 2SR2 as manufactured by Underground Devices, Inc. or approved equal. Each rack shall be supplied with all necessary hardware for installation including but not limited to drop-in anchors, washers, hex head screws, locks, and setting tools. The racks shall be constructed of a non-metallic material such as polycarbonate and have a minimum of three (3) points of attachment. A total of four (4) cable racks shall be installed per junction box and junction box foundation.
- Concrete used for the construction of the junction box shall be Class B.
- Ground rods shall be 3/4" in diameter and 10' long and as specified in Section 918 of the Standard Specifications.
- Two (2) cubic feet of crushed stone shall be placed beneath the drain of the junction box foundation. The minimum depth of the stone shall be 12" from the bottom face of the junction box foundation.
- Junction boxes may be constructed with 4" thick walls versus 6" (shown) where approved by the Engineer.



**DETAIL B - CABLE RACK**  
Scale: 3" = 1'-0"  
(See Note 8)



**DETAIL C**  
Scale: 6" = 1'-0"

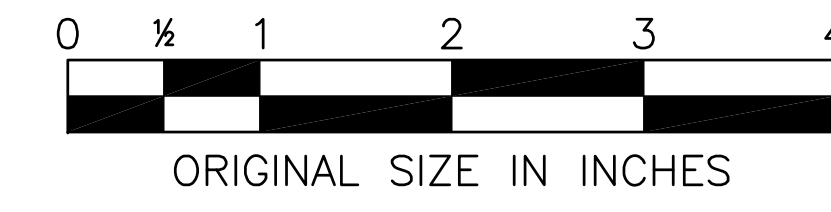


**JUNCTION BOX COVER EMBOSsing DETAIL**  
Scale: 6" = 1'-0"

BY	EMG	05/2009
TRACED	GS	05/2009
CHECKED	EMG	05/2009
SUPERVISED	ALB	05/2009

ACAD FILE NAME: NJTA-SD E-13.dwg Layout: E-13

If you use this Standard Drawing:	
You also need	-
You may need	E-12, E-18, E-19



APP.	NO.	DATE	REVISION
	0	05/2009	ORIGINAL DRAWING

NEW JERSEY TURNPIKE AUTHORITY  
**NEW JERSEY TURNPIKE**

**JUNCTION BOX TYPE C**

**HNTB** 145 RT. 46 WEST, SUITE 400,  
WAYNE, NJ 07470 - CO# 24G2800070  
**ANTHONY L. BARTELLO**  
N.J.P.E. License No. GE 45842

**STANDARD DRAWING**  
**E-13**