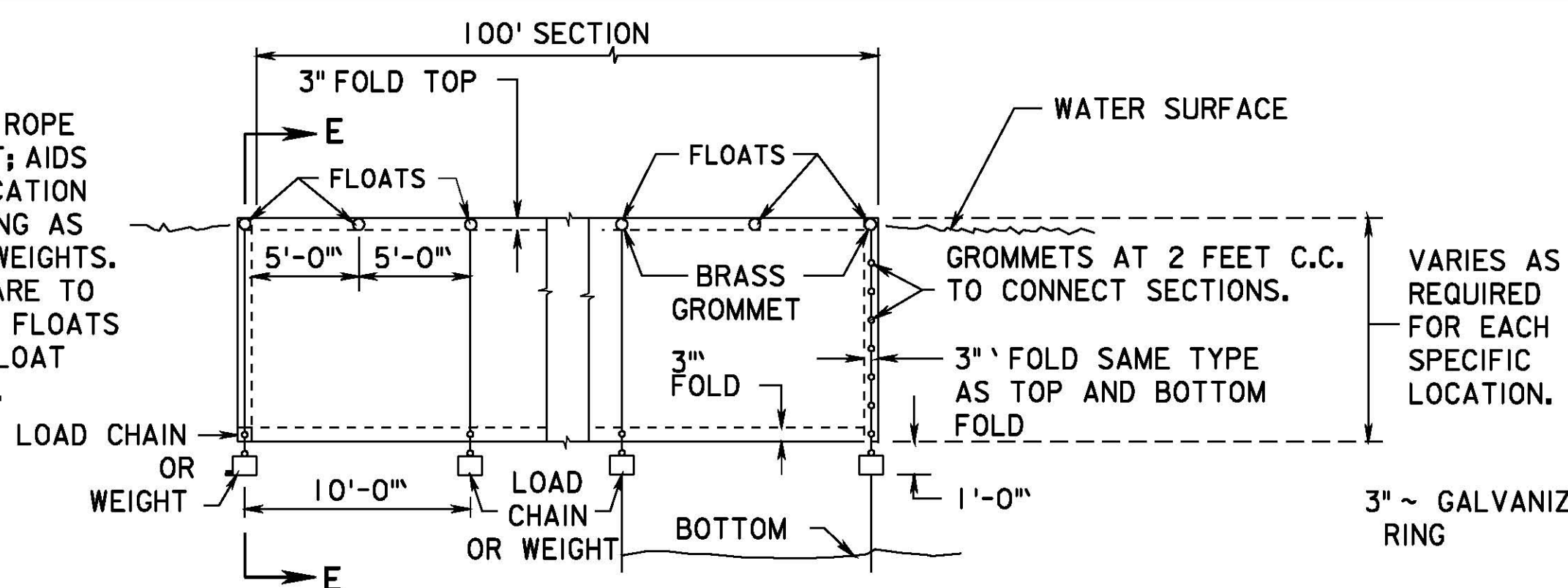
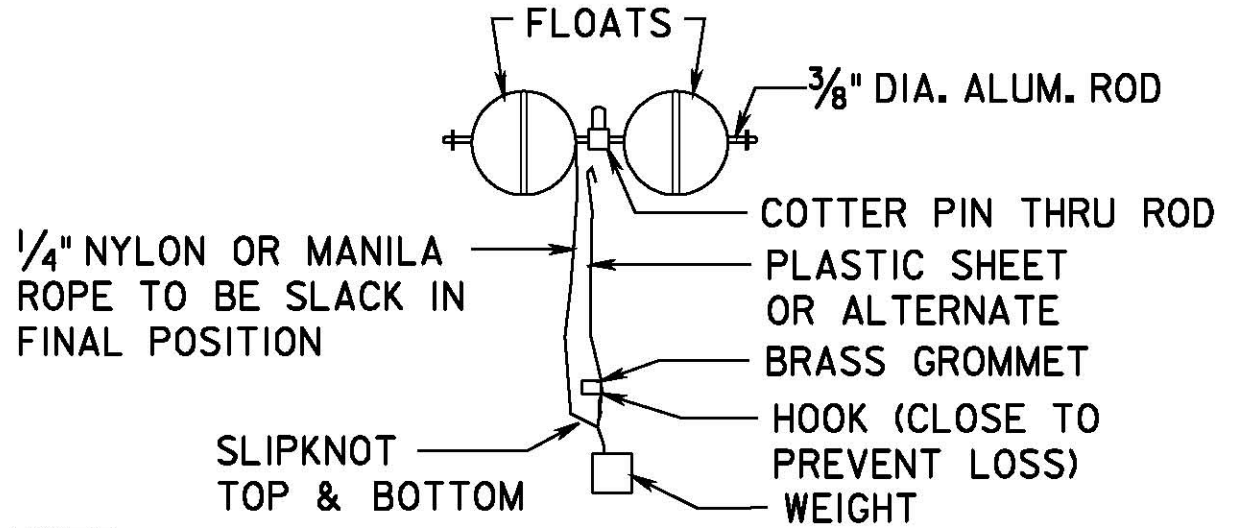


INLET SEDIMENT TRAP

NOTE:
1/4" NYLON OR MANILA ROPE FORMS REINFORCEMENT; AIDS IN REMOVAL OR RELOCATION OF BARRIER BY SERVING AS A PICK-UP LINE FOR WEIGHTS. ROPES AND WEIGHTS ARE TO BE ATTACHED TO END FLOATS AND EVERY SECOND FLOAT BETWEEN END FLOATS.

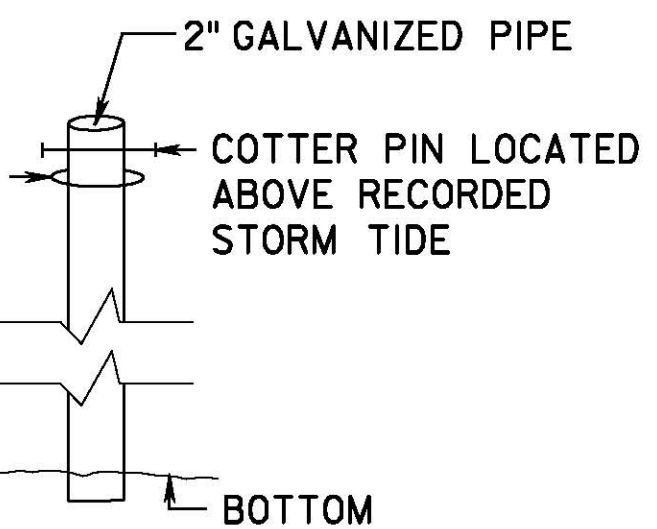
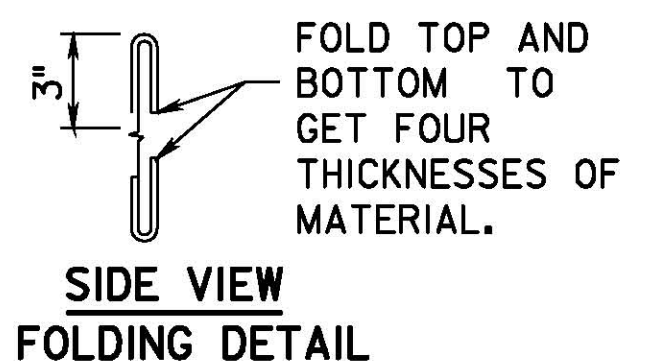


NOTE:
TYPE 1, 2, OR 3 TURBIDITY BARRIER TO FIT EXISTING CONDITION AS APPROVED BY THE R.E..

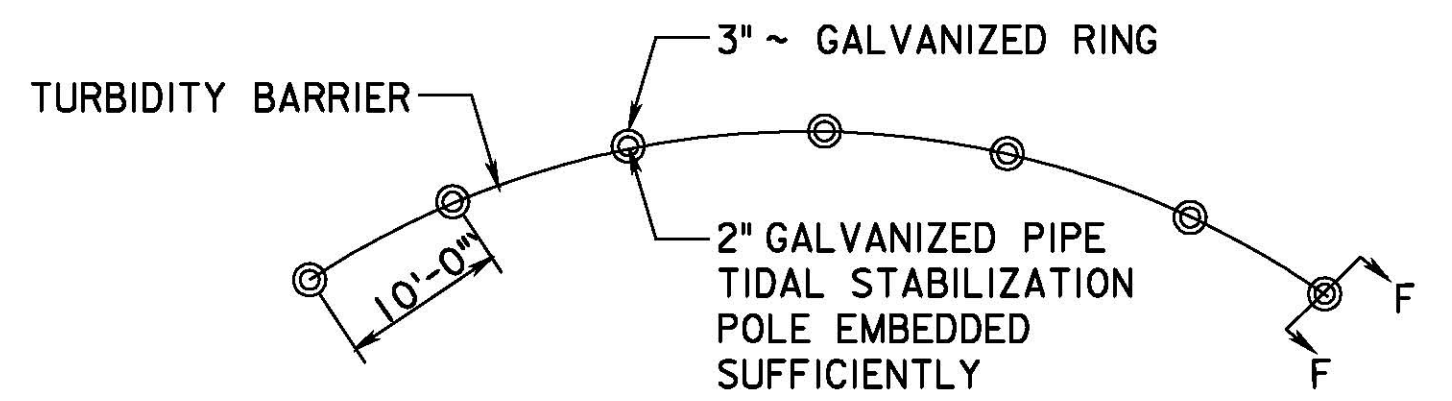


NOTE:
SUITABLE ALTERNATE MAY BE FASTENED TO STAKES DRIVEN INTO THE BOTTOM IN LIEU OF FLOATS AND WEIGHTS

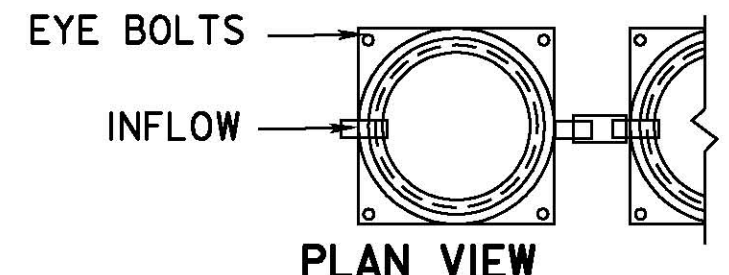
SECTION E-E



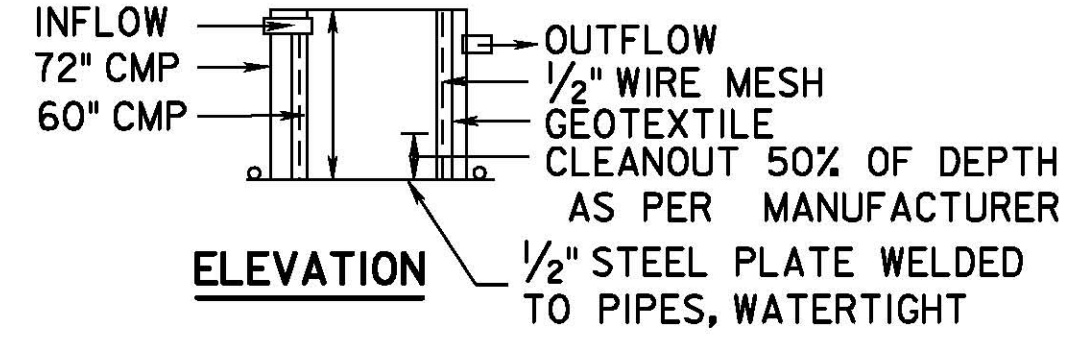
SECTION F-F



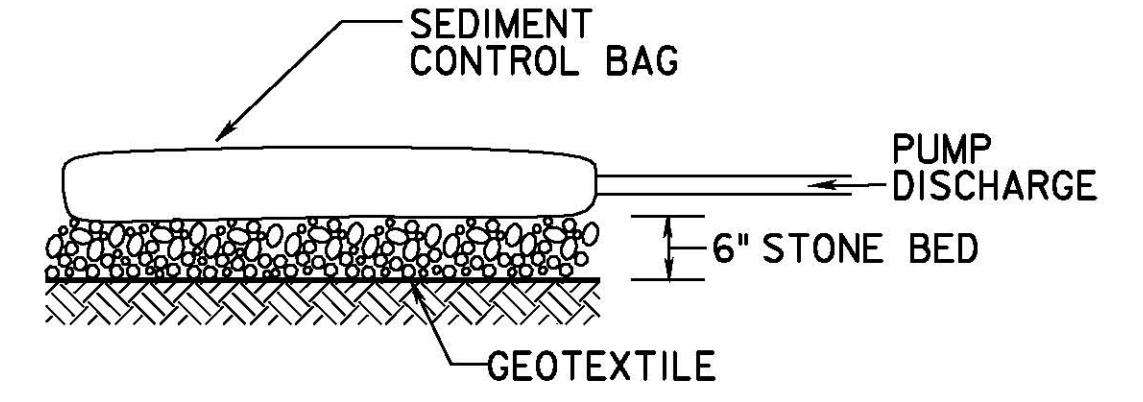
FLOATING TURBIDITY BARRIER



PLAN VIEW



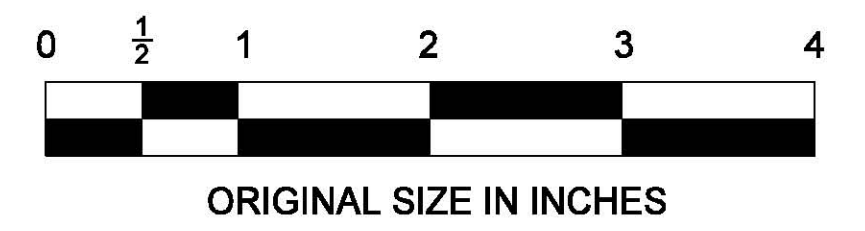
ELEVATION



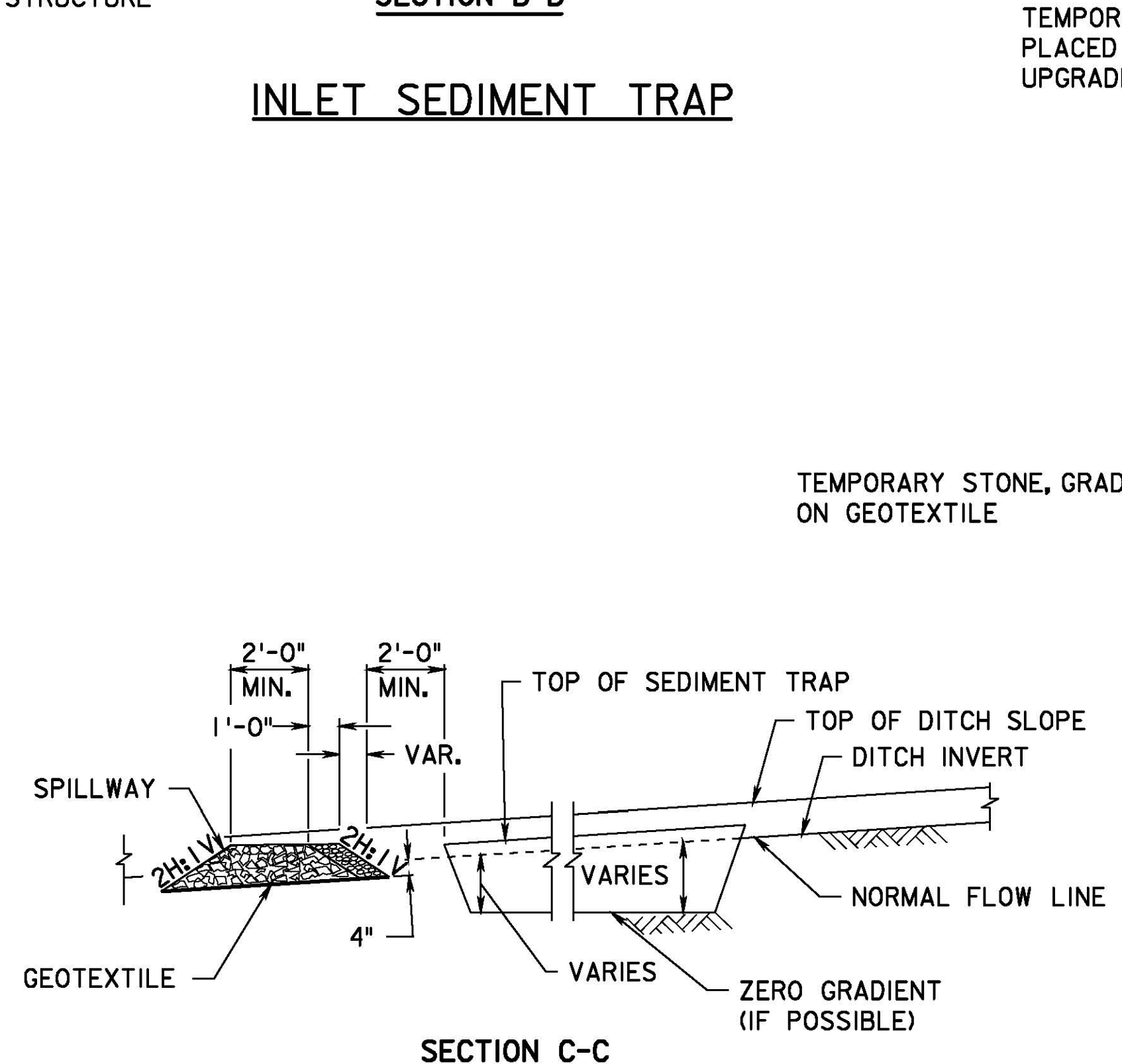
ELEVATION

NOTES:

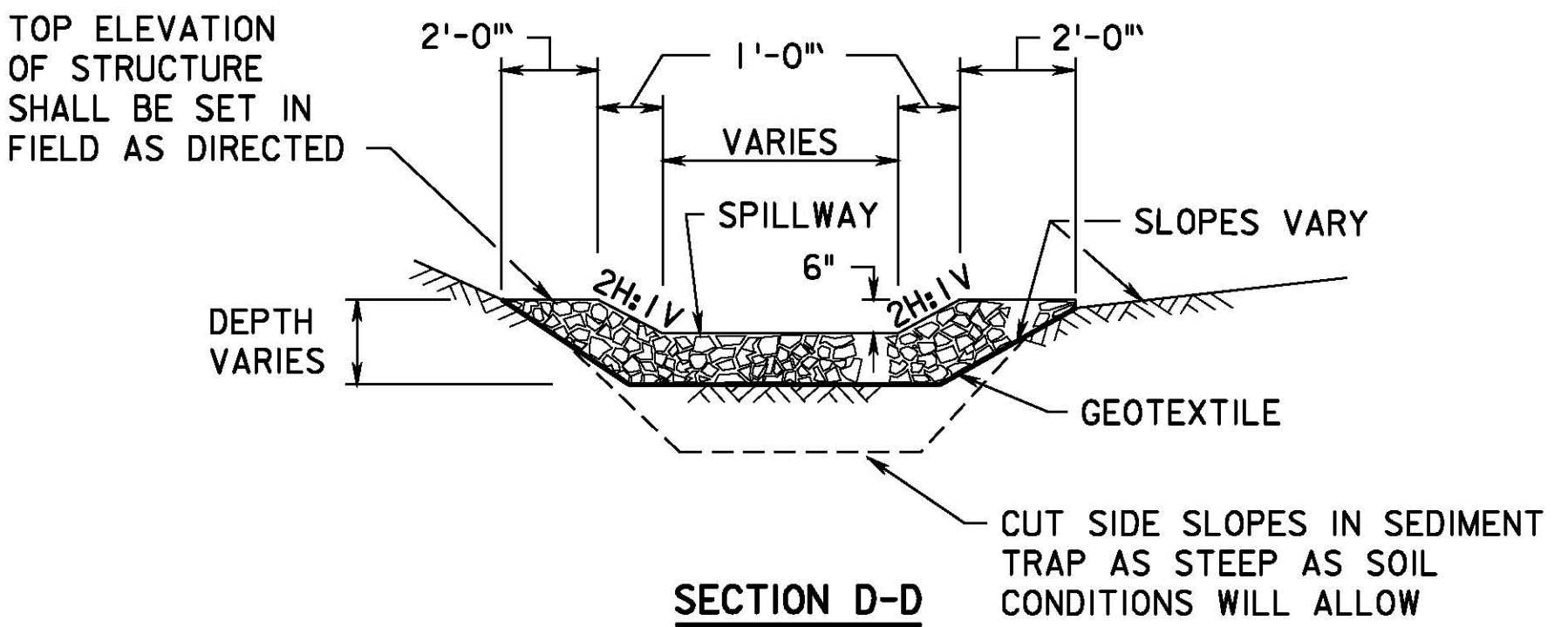
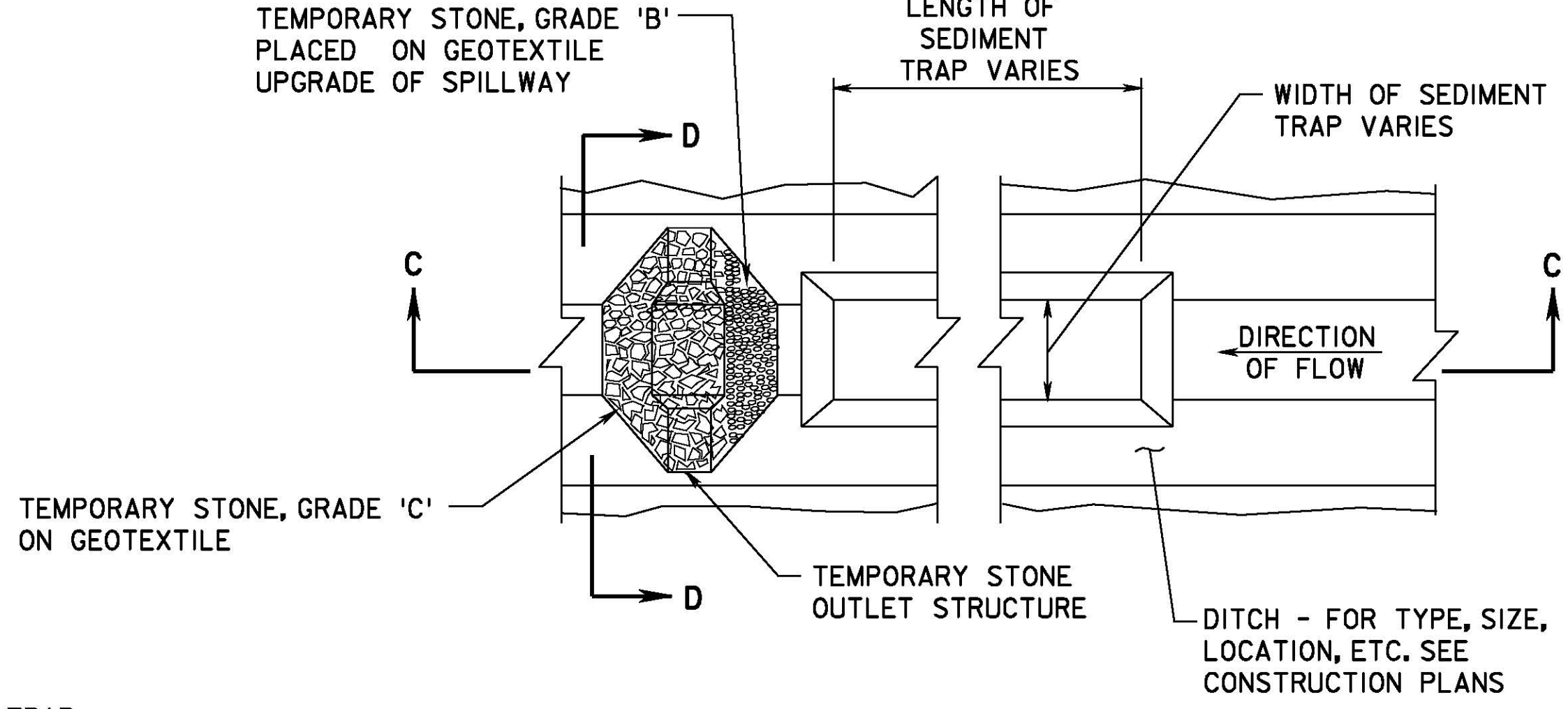
- BAG MUST BE LOCATED AWAY FROM RECEIVING WATERS, OTHER ENVIRONMENTALLY SENSITIVE AREAS, AND/OR CONSTRUCTION ACTIVITIES.
- BAGS MUST BE INSTALLED PER MANUFACTURER'S RECOMMENDATIONS.
- BAGS MAY NOT BE REUSED.
- BAGS MUST BE DISPOSED OF ACCORDING TO MANUFACTURER'S INSTRUCTIONS.



N.T.S.

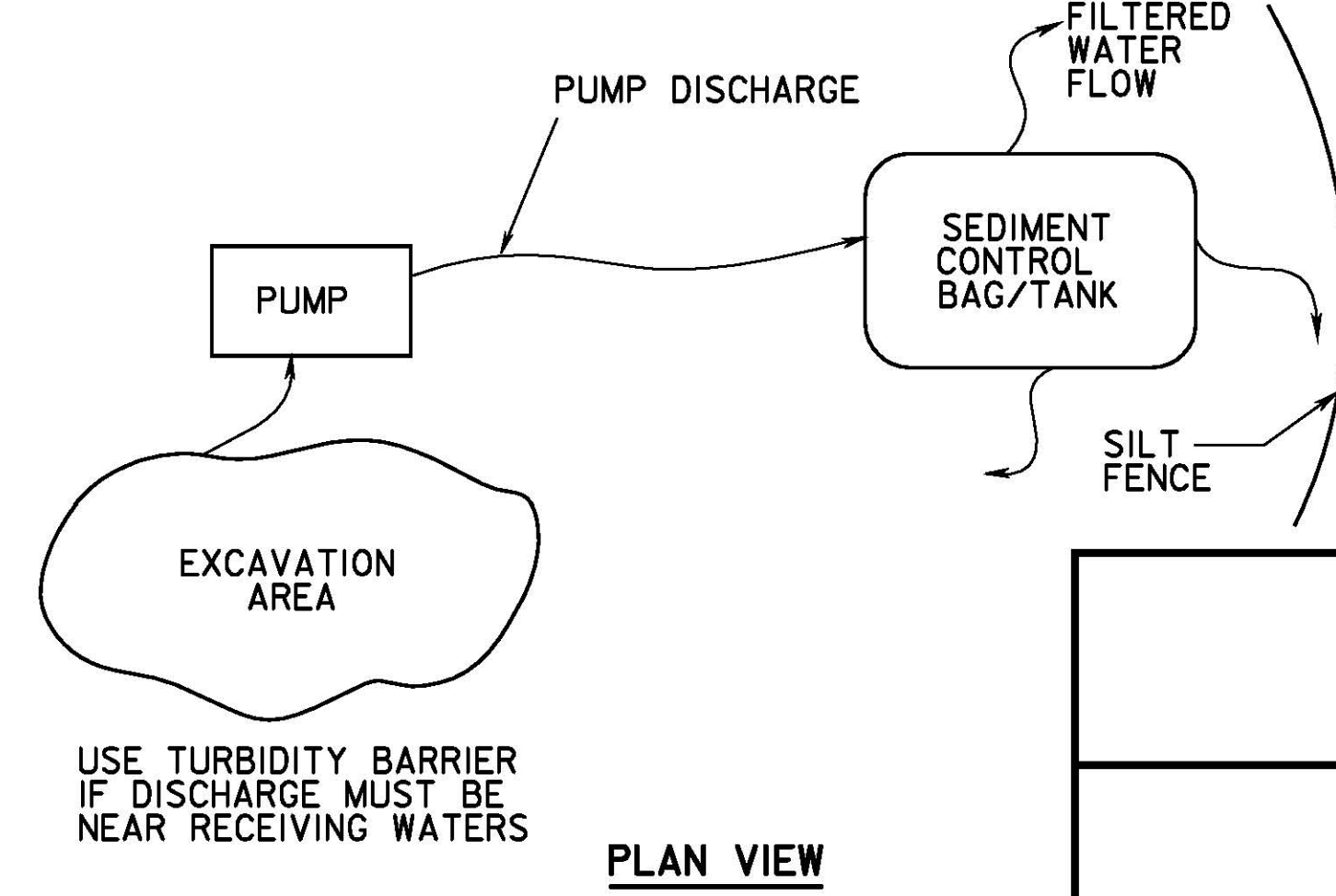


SECTION C-C



SECTION D-D

STONE OUTLET SEDIMENT TRAPS



SEDIMENT CONTROL TANK OR BAG

App.	No.	DATE	REVISION
		04/09	ORIGINAL DRAWING

CONTRACT NO.

SHEET NO.

OF

NEW JERSEY TURNPIKE AUTHORITY

EROSION CONTROL DETAILS - 4

OFFICE OF THE CHIEF ENGINEER

2009 STANDARD
DRAWING

DR-13