

DELINEATOR ASSEMBLY CLASSIFICATION

DELINEATOR ASSEMBLIES WILL BE CALLED FOR ON THE PLANS BY USE OF THE FOLLOWING IDENTIFICATION SYSTEM:

1ST LETTER: P= POST MOUNTED (FLANGED CHANNEL POST)
 B= BRIDGE RAIL MOUNTED (BRACKET)
 C= CONCRETE BARRIER OR PARAPET MOUNTED (BENT BAR)
 F= FENCE MOUNTED (BAR)
 G= GUIDE RAIL MOUNTED (BAR)

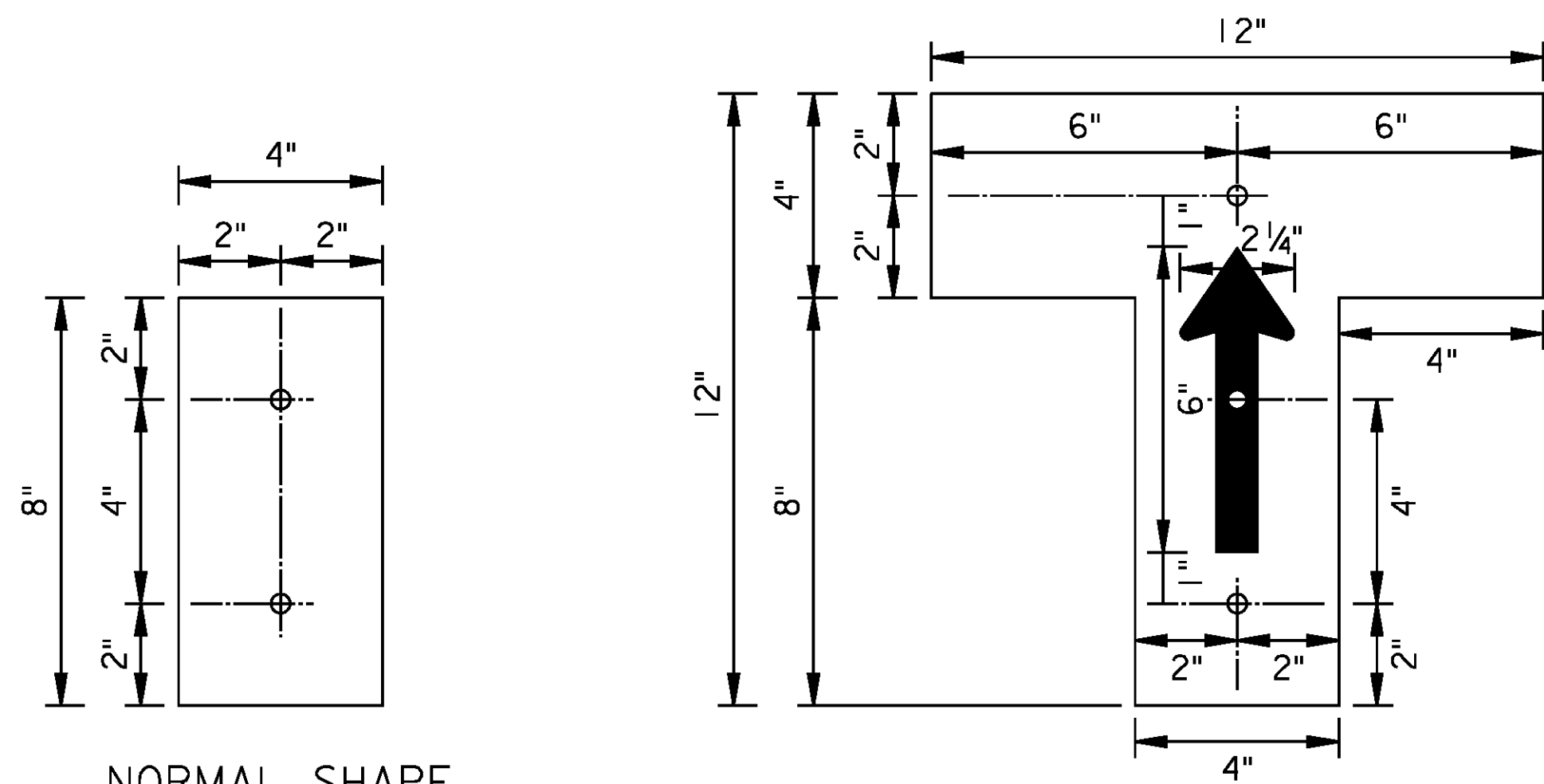
2ND LETTER: MOUNTING TYPE (A OR B)

3RD LETTER: X= 2-SIDED, LEAVE BLANK FOR 1-SIDED

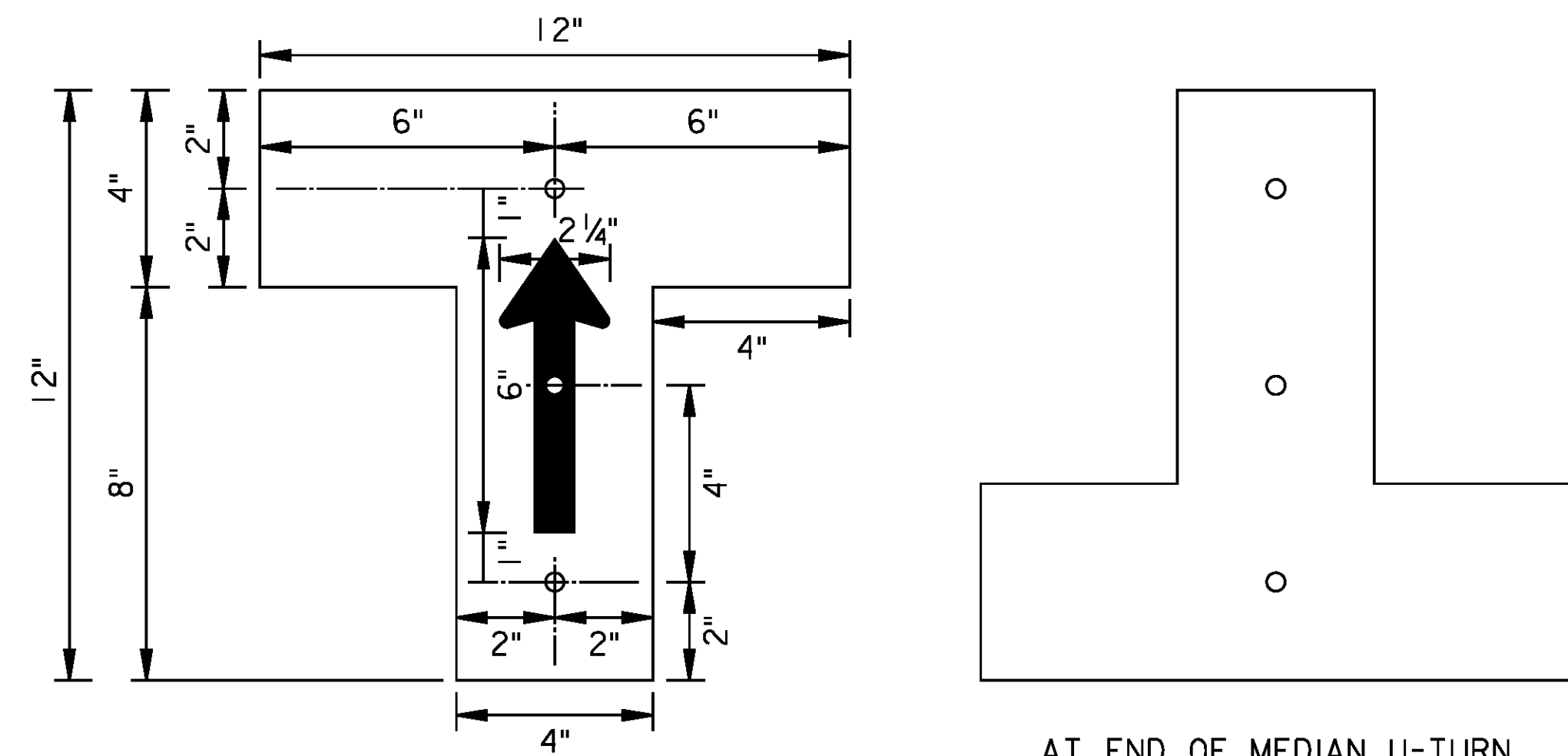
THE ABOVE SYSTEM WILL BE FOLLOWED BY A DASH, AND A LETTER DESIGNATING THE COLOR:

W= WHITE (CRYSTAL)
 Y= YELLOW (AMBER)
 R= RED

WHERE THE 45° SHAPE, 90° SHAPE OR T SHAPE IS TO BE USED, THE NAME OF THE SHAPE WILL PRECEDE THE NOMENCLATURE GIVEN ABOVE.

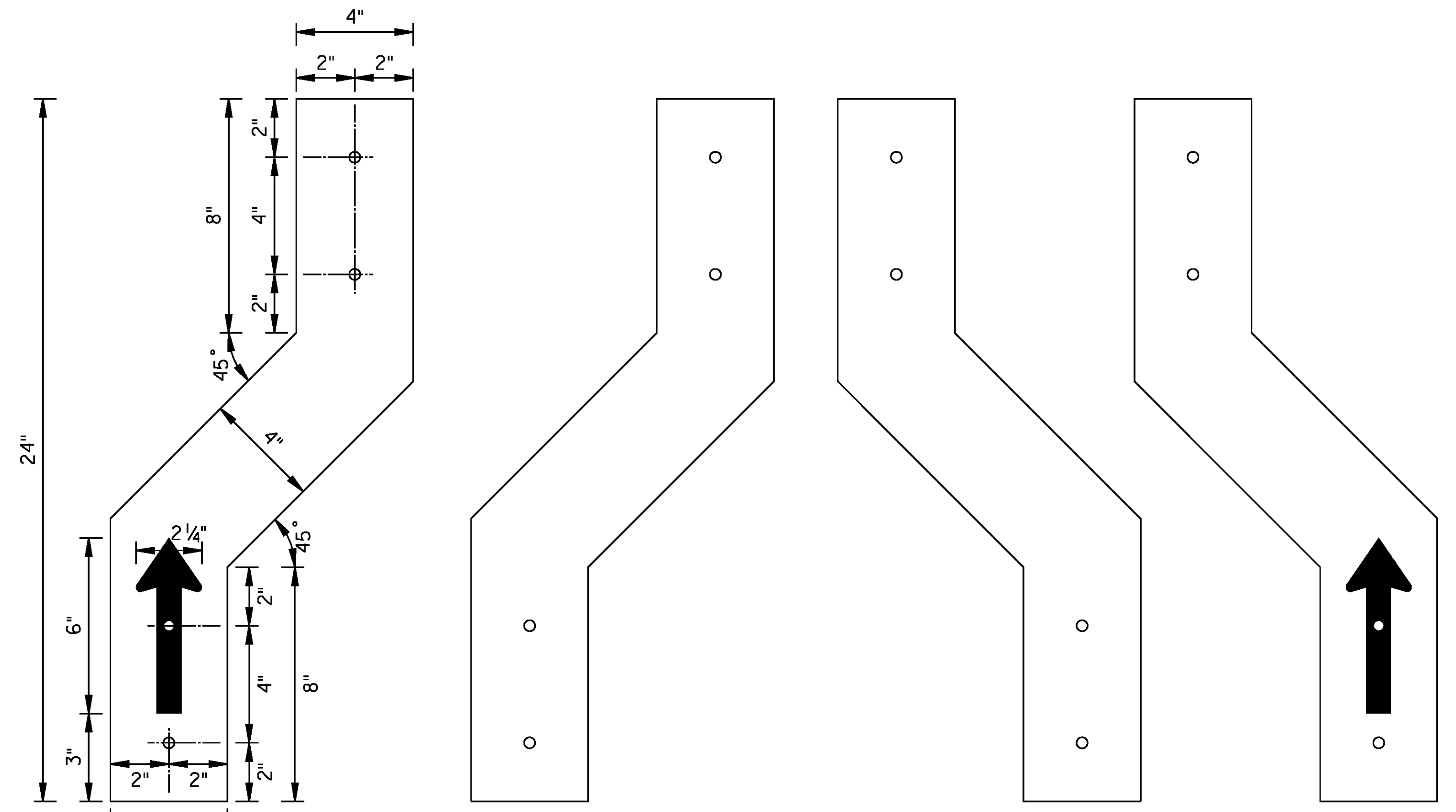


NORMAL SHAPE



AT OR AHEAD OF MEDIAN U-TURN OPENINGS; AT MEDIAN Z-TURN OPENINGS

AT END OF MEDIAN U-TURN OR Z-TURN OPENING

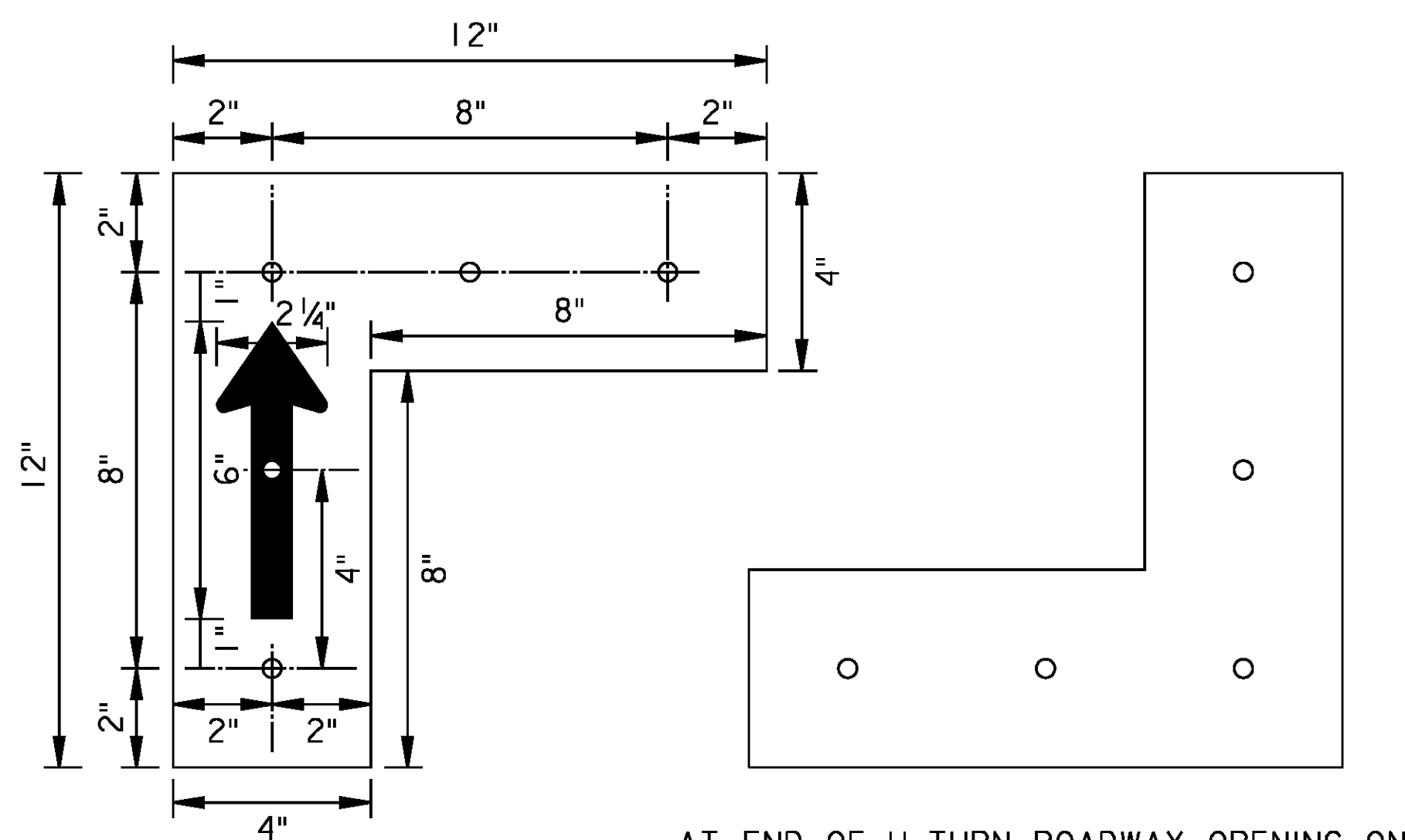


AHEAD OF Z-TURN OPENING ON RIGHT

AHEAD OF Z-TURN OPENING ON LEFT

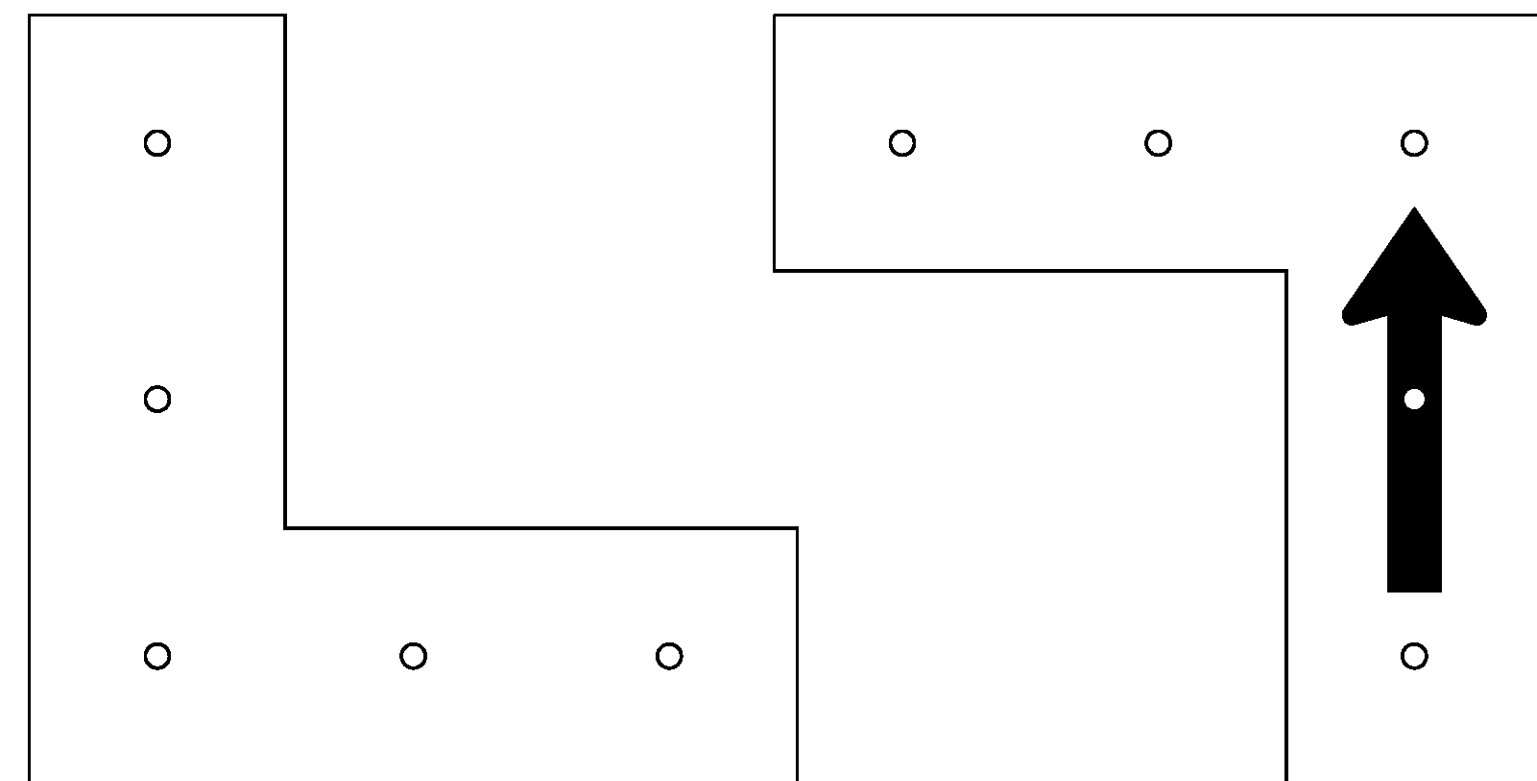
45° SHAPE
SEE NOTE 5

T SHAPE
SEE NOTE 4



AT OR AHEAD OF U-TURN ROADWAY OPENING ON RIGHT (GRADE SEPARATED)

AT END OF U-TURN ROADWAY OPENING ON LEFT (MEDIAN CUT-THROUGH)



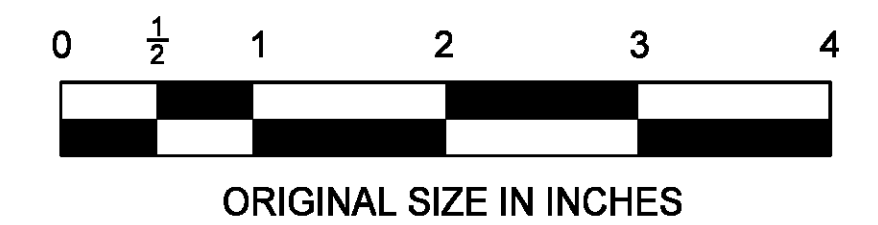
AT END OF U-TURN ROADWAY OPENING ON RIGHT

AT OR AHEAD OF U-TURN ROADWAY OPENING ON LEFT

90° SHAPE
SEE NOTE 4

NOTES

- ONLY THOSE SHAPES ILLUSTRATED MAY BE USED.
- THE ADVANCE ARROW MAY BE ADDED TO THE 45° SHAPE, 90° SHAPE OR T SHAPE FOR INSTALLATIONS 1000 FEET IN ADVANCE OF THE TURN.
- ALL SCREW HOLES SHALL BE 5/16" DIAMETER.
- MOUNT T SHAPE AND 90° SHAPE USING THREE HOLES. DRILL THIRD HOLE IN MOUNTING BAR 4 INCHES BELOW TOP TWO HOLES.
- THE 45° SHAPE SHALL BE WHITE. IT IS MOUNTED BETWEEN SAME-DIRECTION ROADWAYS IN ADVANCE OF OPENINGS (Z-TURNS), AS SHOWN ON DRAWING DE-5.



ORIGINAL SIZE IN INCHES

NEW JERSEY TURNPIKE AUTHORITY

DELINEATOR SHAPE DETAILS

OFFICE OF THE CHIEF ENGINEER

STANDARD
DRAWING

DE-2

App.	No.	DATE	REVISION
		11/12	ORIGINAL DRAWING

CONTRACT NO.

SHEET NO.

OF