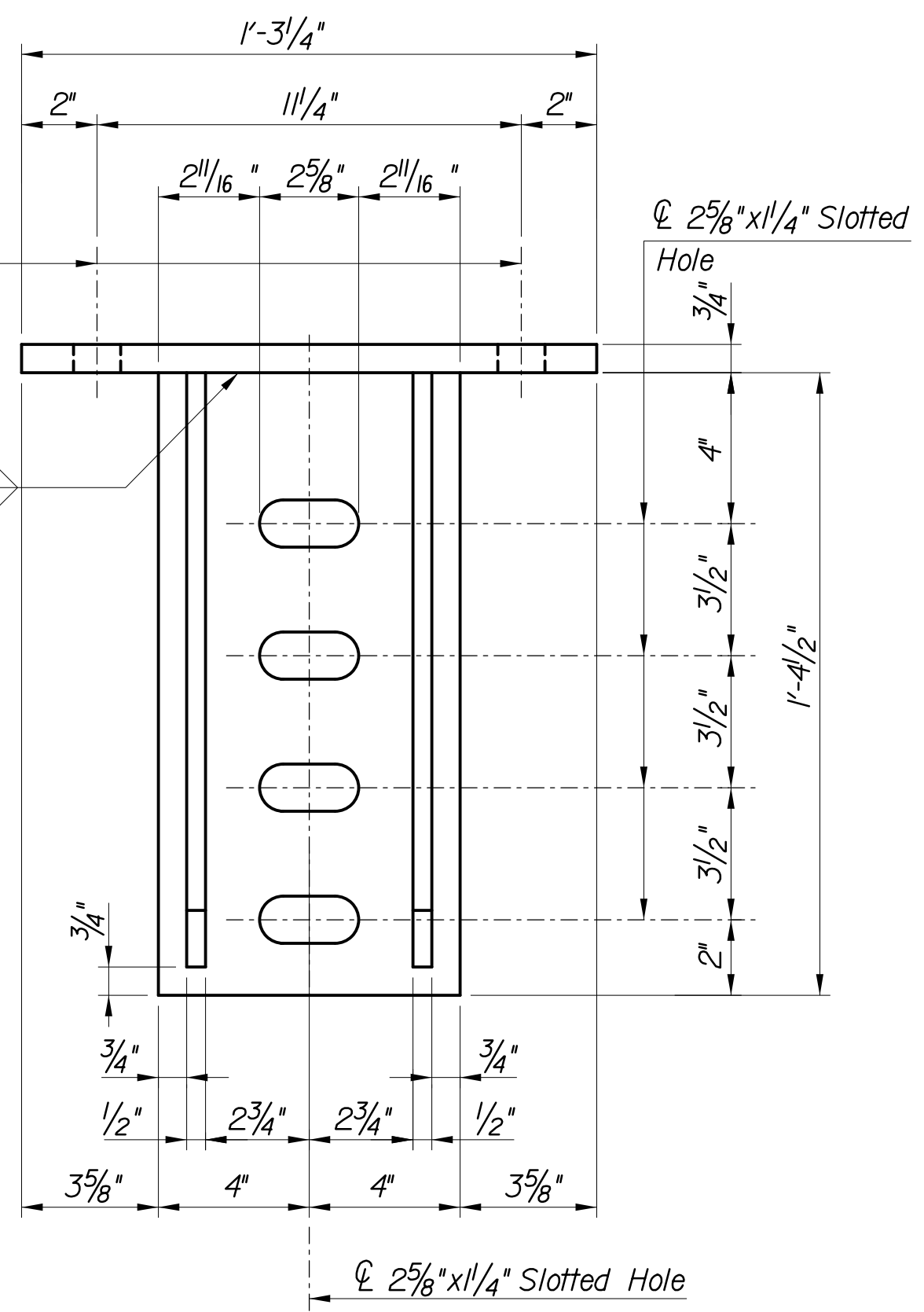
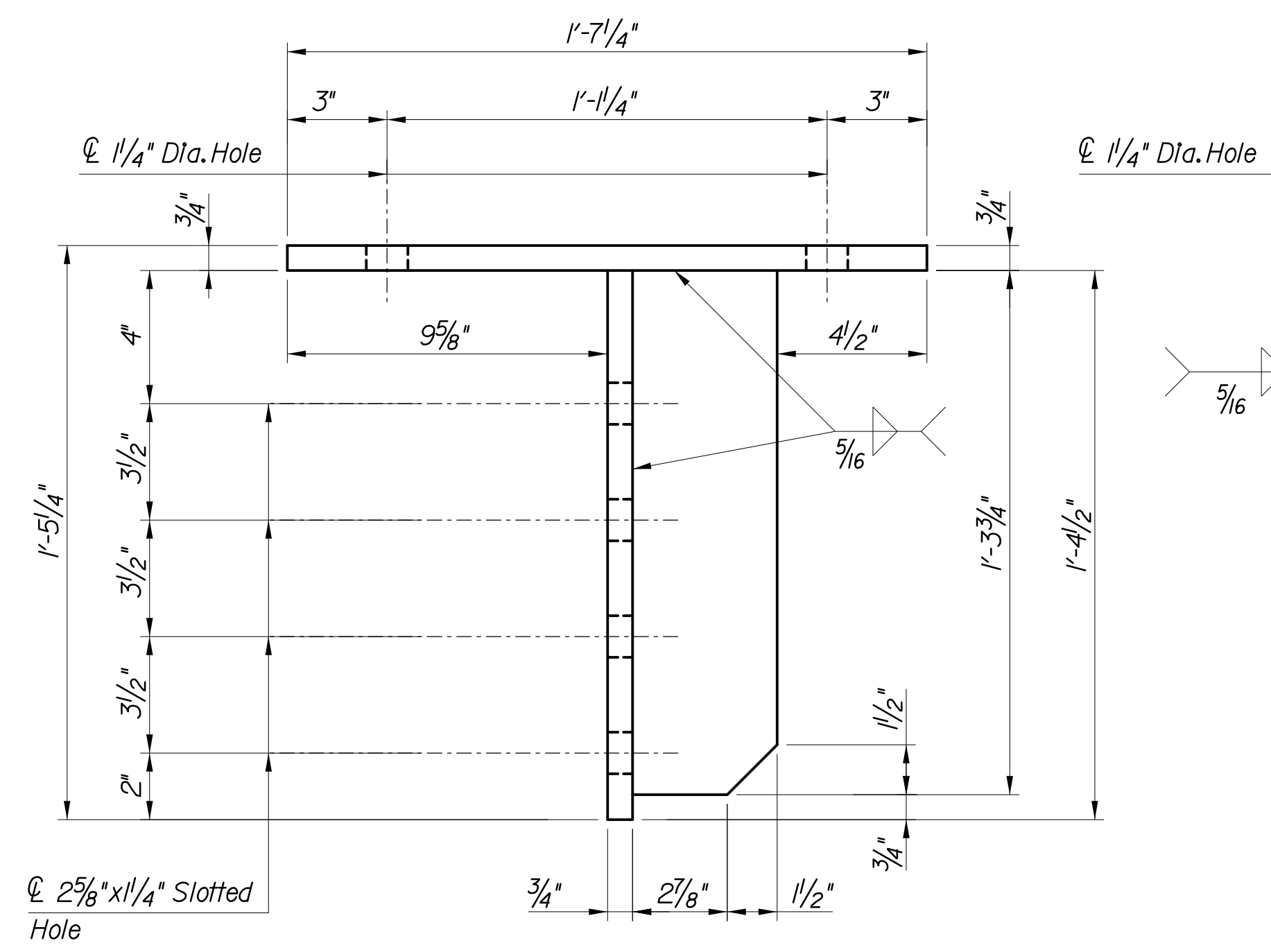
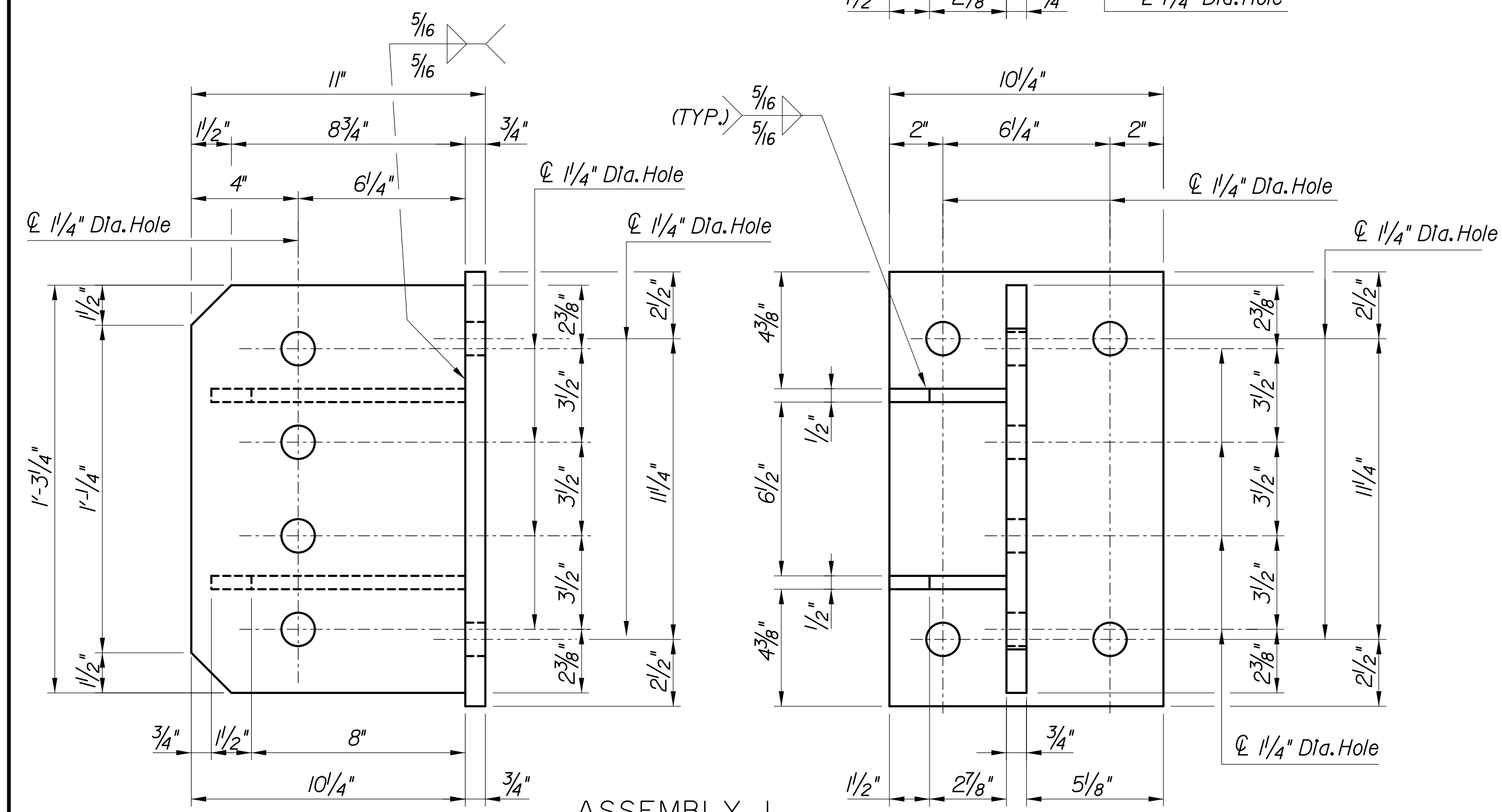


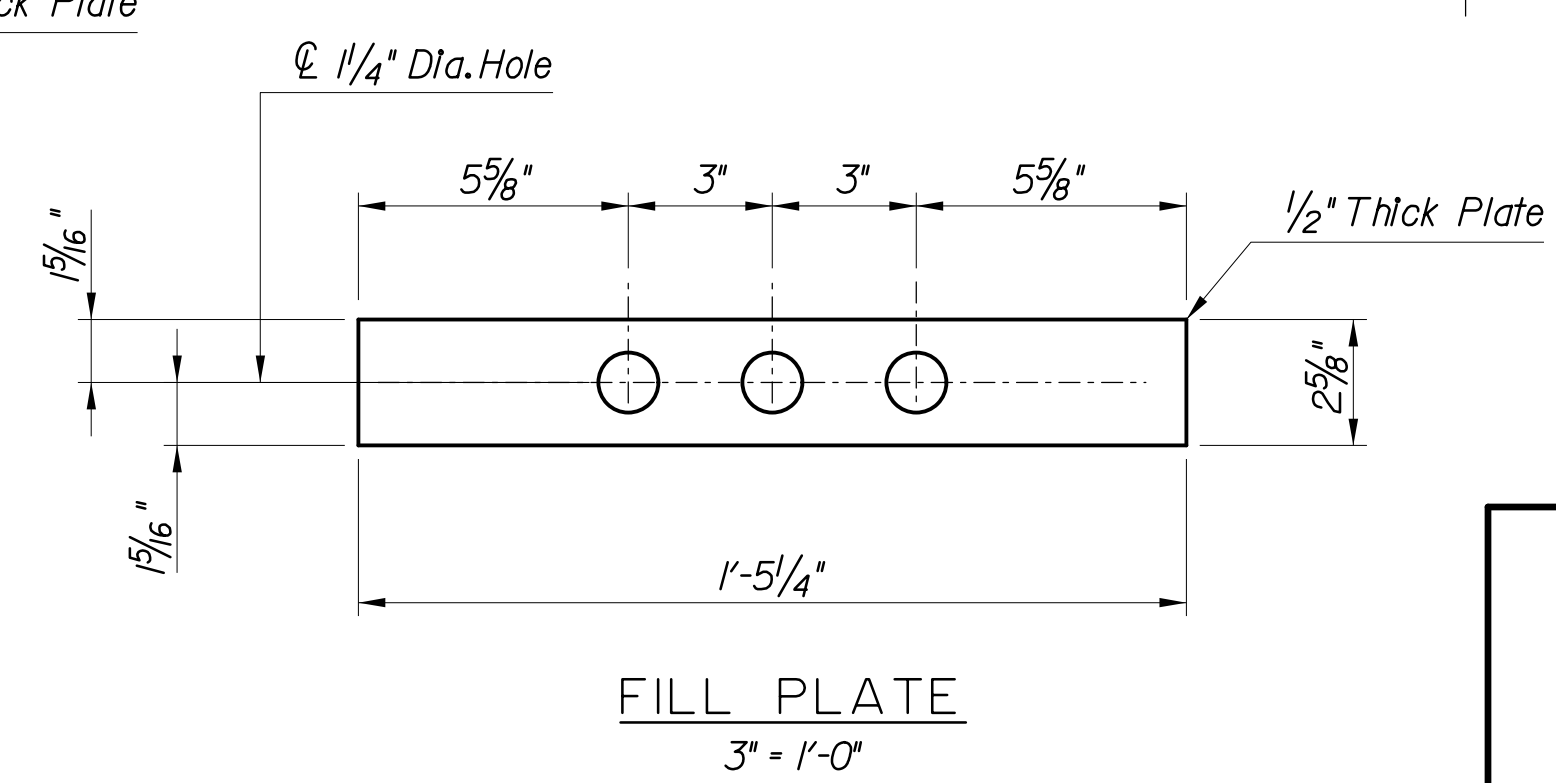
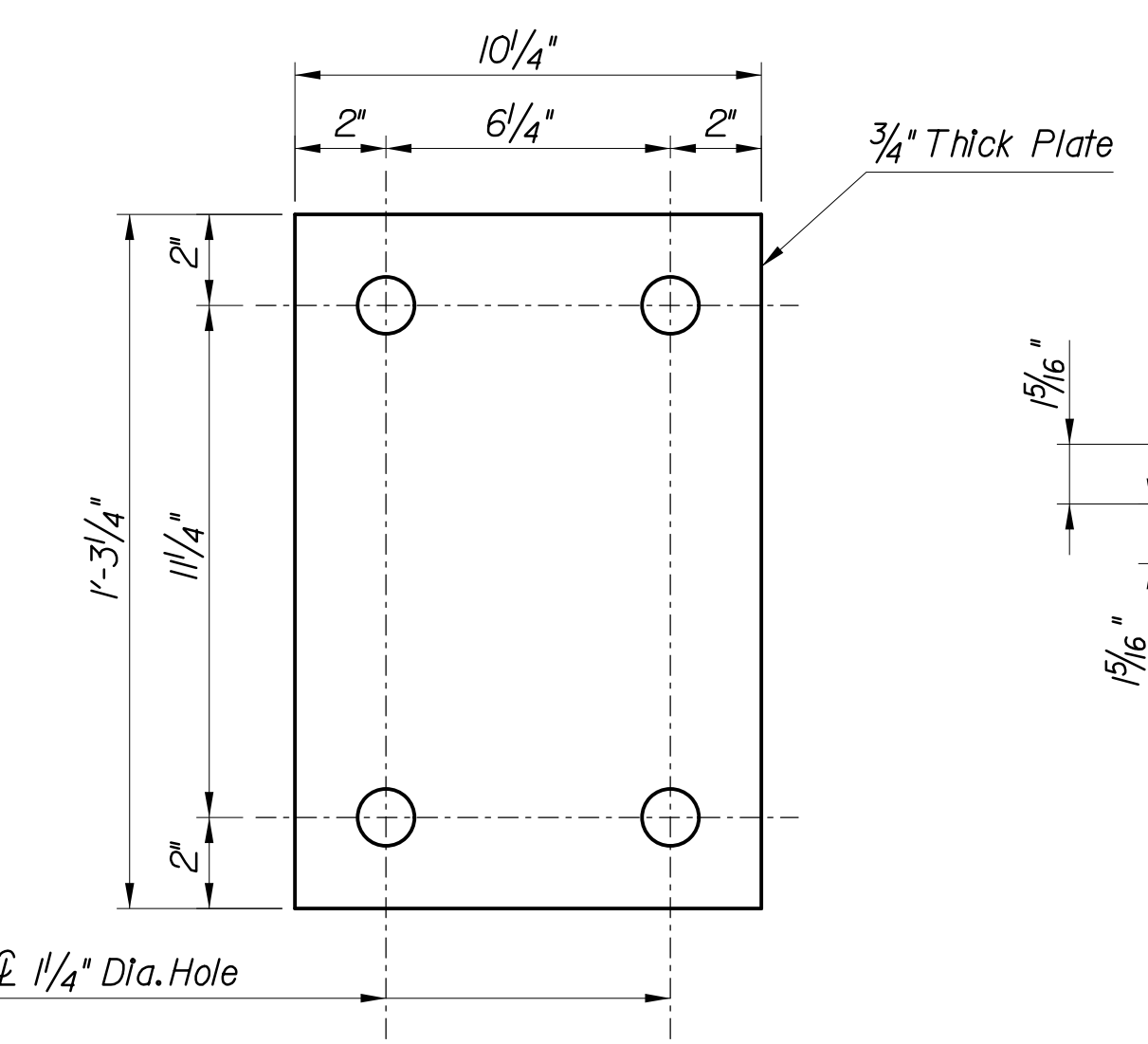
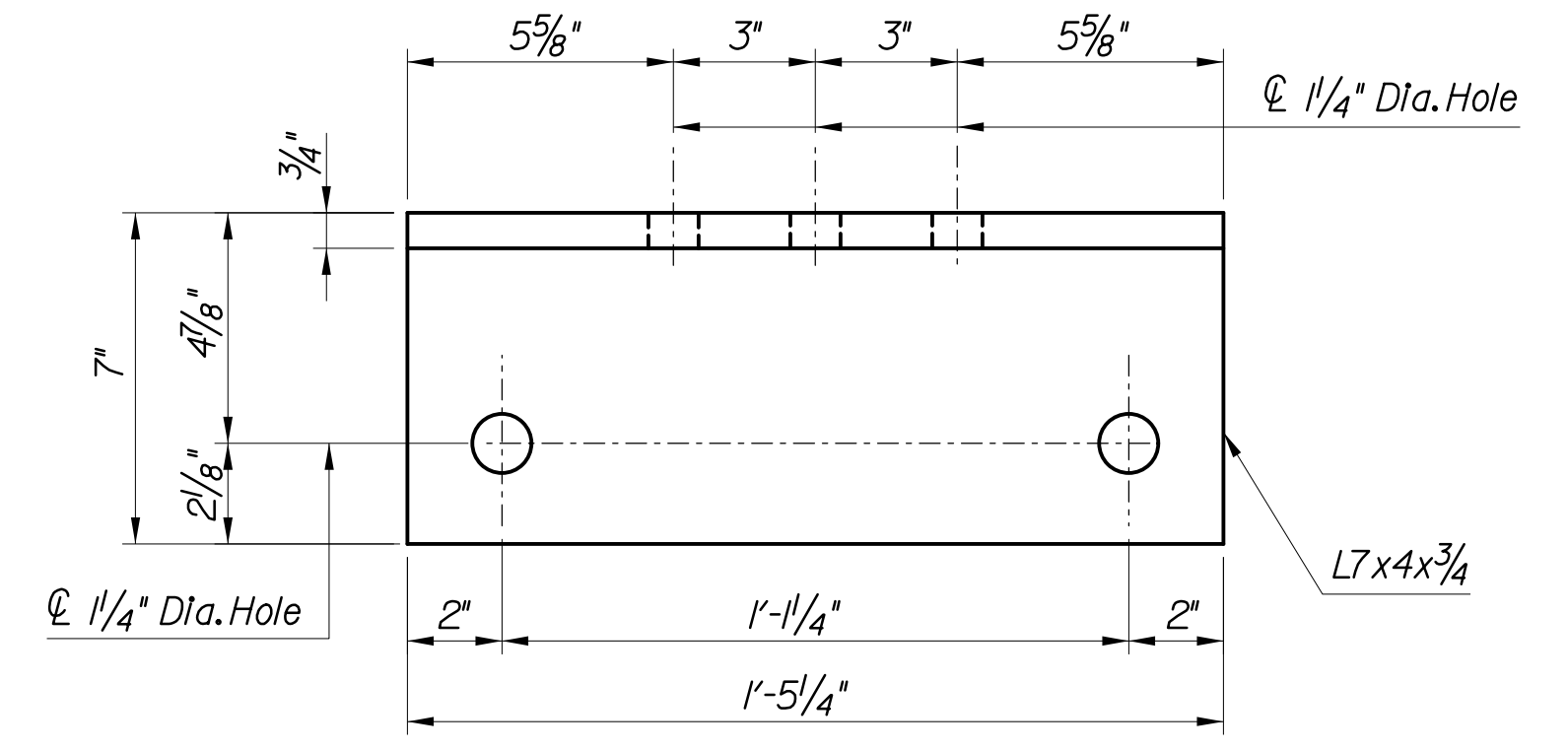
NOTES:

- For Bracket notes and Details, see Standard Dwg. CM-11.
- These Retrofit Details have been designed and sized predicated on the structures to be retrofitted have been erected to standard fabrication and erection tolerances as defined within the AASHTO LRFD Bridge Construction Specifications, 3rd Edition, 2010. Misfit or out of tolerance fabrication may be present at some structure locations. The Contractor shall field verify all relevant dimensions of the existing structure, including all sizes and offsets of members at bracket locations, and shall coordinate all findings with the Fabricator prior to submission of the bracket shop drawings where field measured values differ from the As-Built Plans. The Contractor shall adjust bracket dimensions shown herein as necessary based on the field measurements.



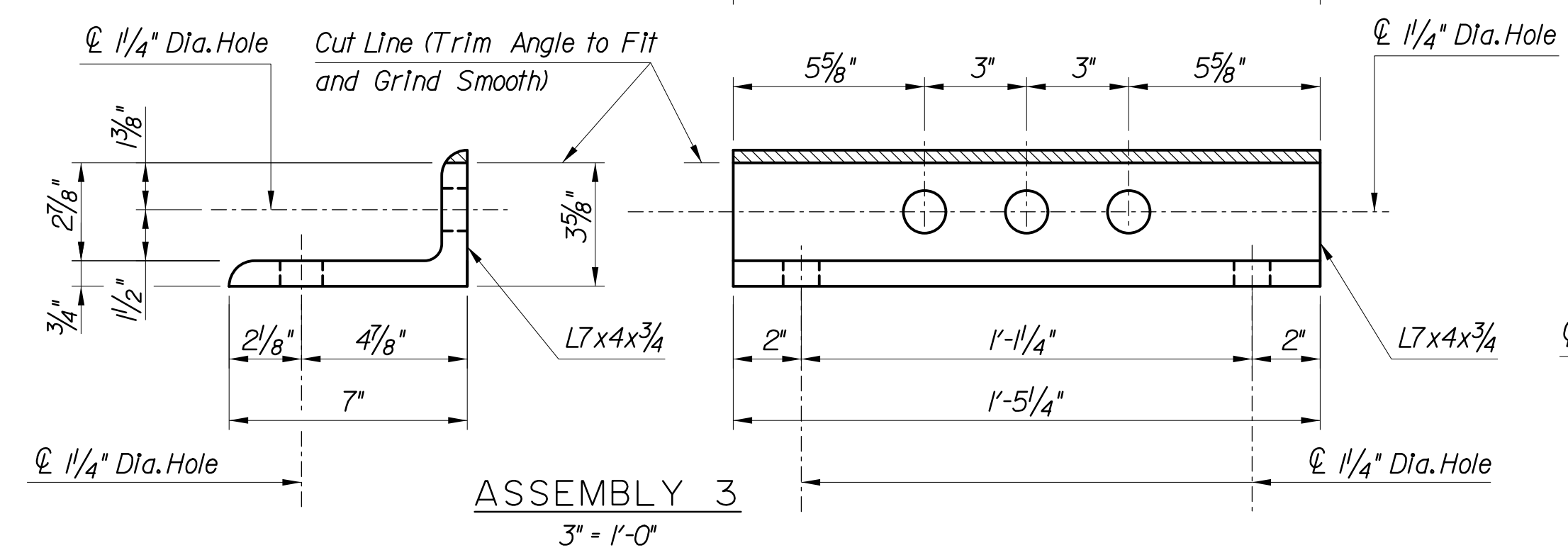
ASSEMBLY 1
3" = 1'-0"

ASSEMBLY 2
3" = 1'-0"

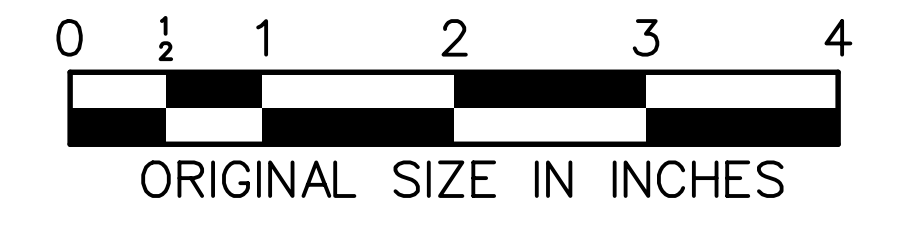


ASSEMBLY 4
3" = 1'-0"

FILL PLATE
3" = 1'-0"



ASSEMBLY 3
3" = 1'-0"



NEW JERSEY TURNPIKE AUTHORITY
NEW JERSEY TURNPIKE
 OVERHEAD SPAN HCMS SUPPORT STRUCTURES
BRACKET DETAILS - 2
 OFFICE OF THE CHIEF ENGINEER
 NEW JERSEY TURNPIKE AUTHORITY
 WOODBRIDGE NEW JERSEY
 2016 STANDARD
 DRAWING **CM-12**
 OF

APP. NO.	DATE	REVISION
0	11/16	ORIGINAL DRAWING

CONTRACT NO.

SHEET NO.