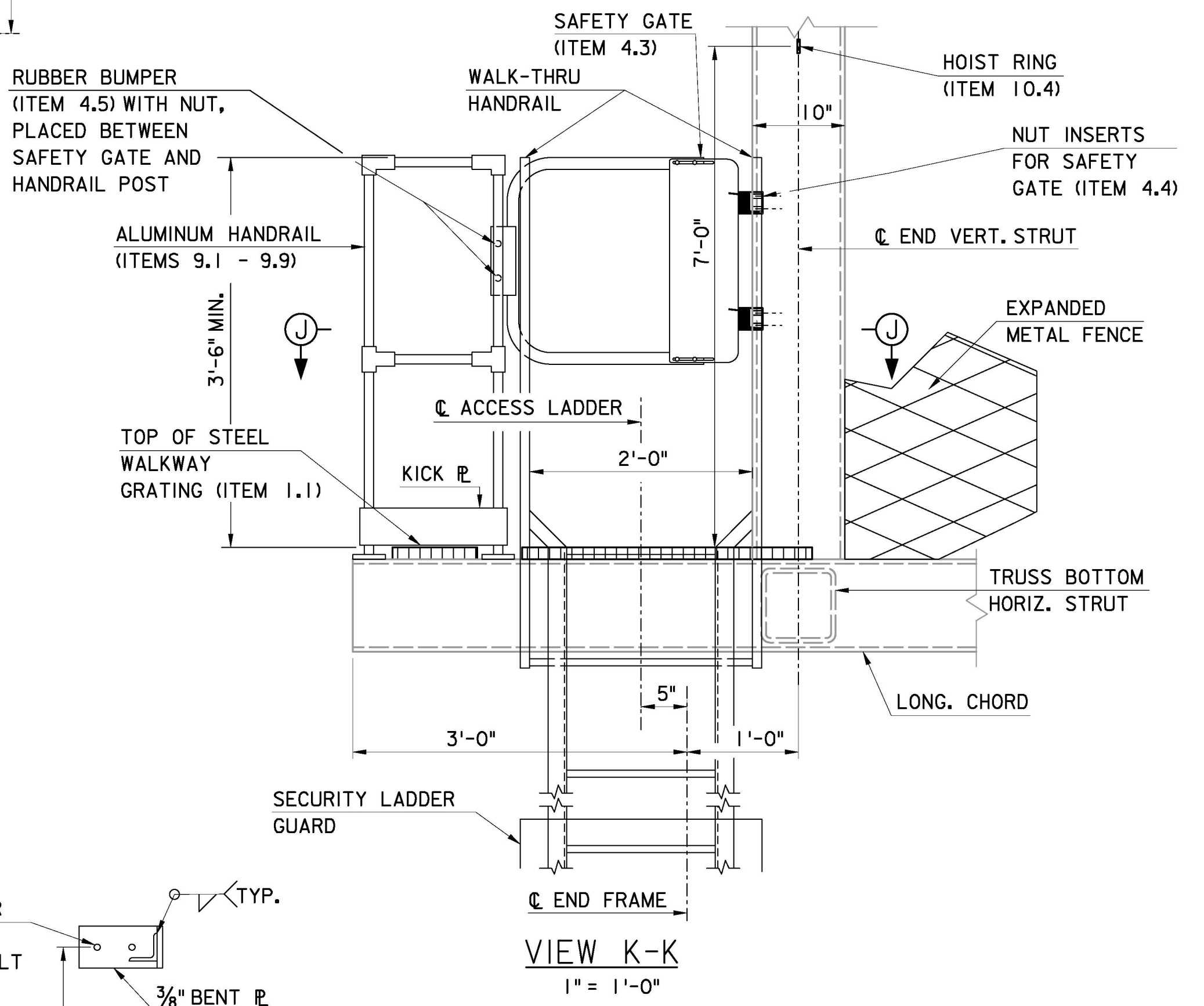
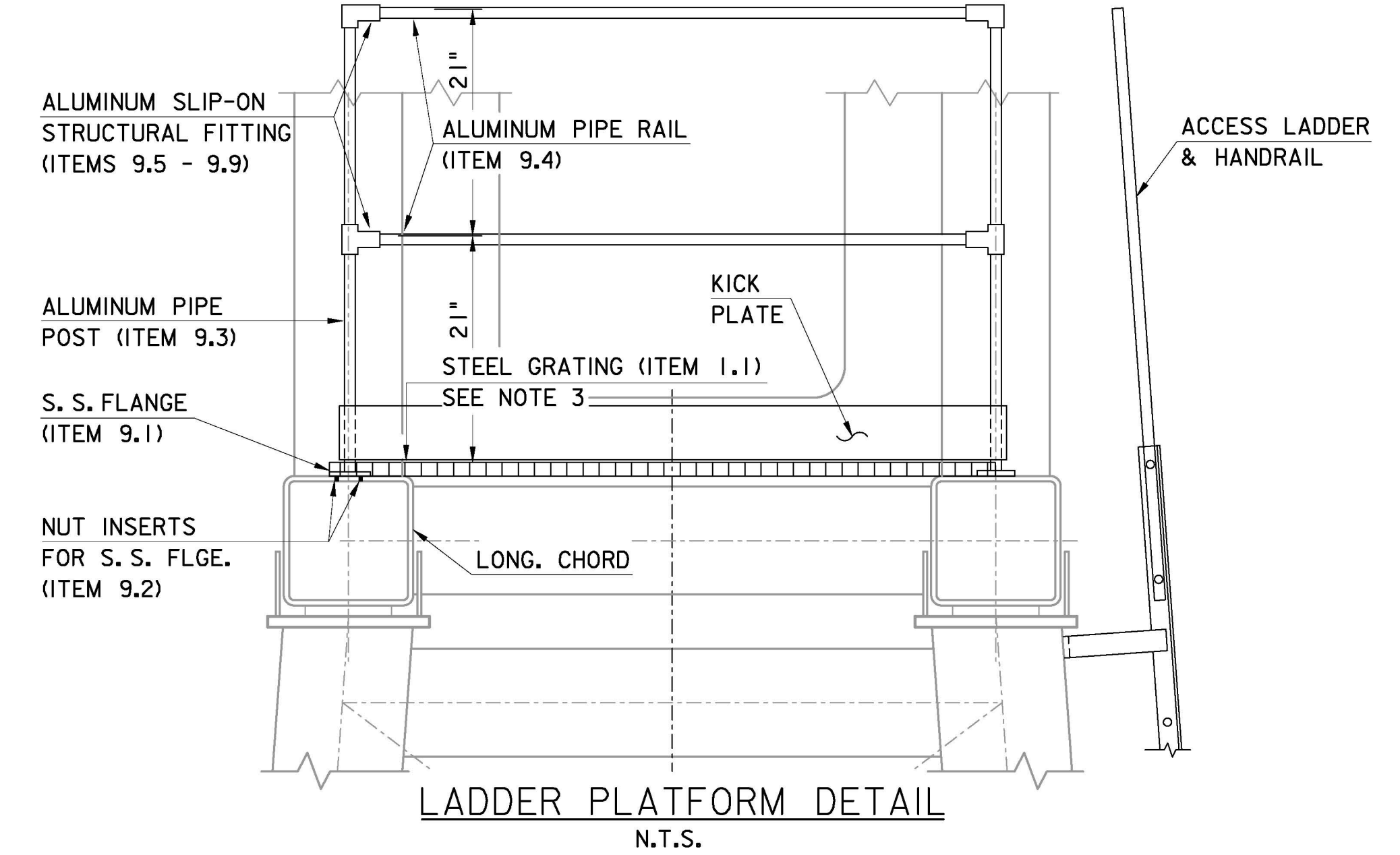
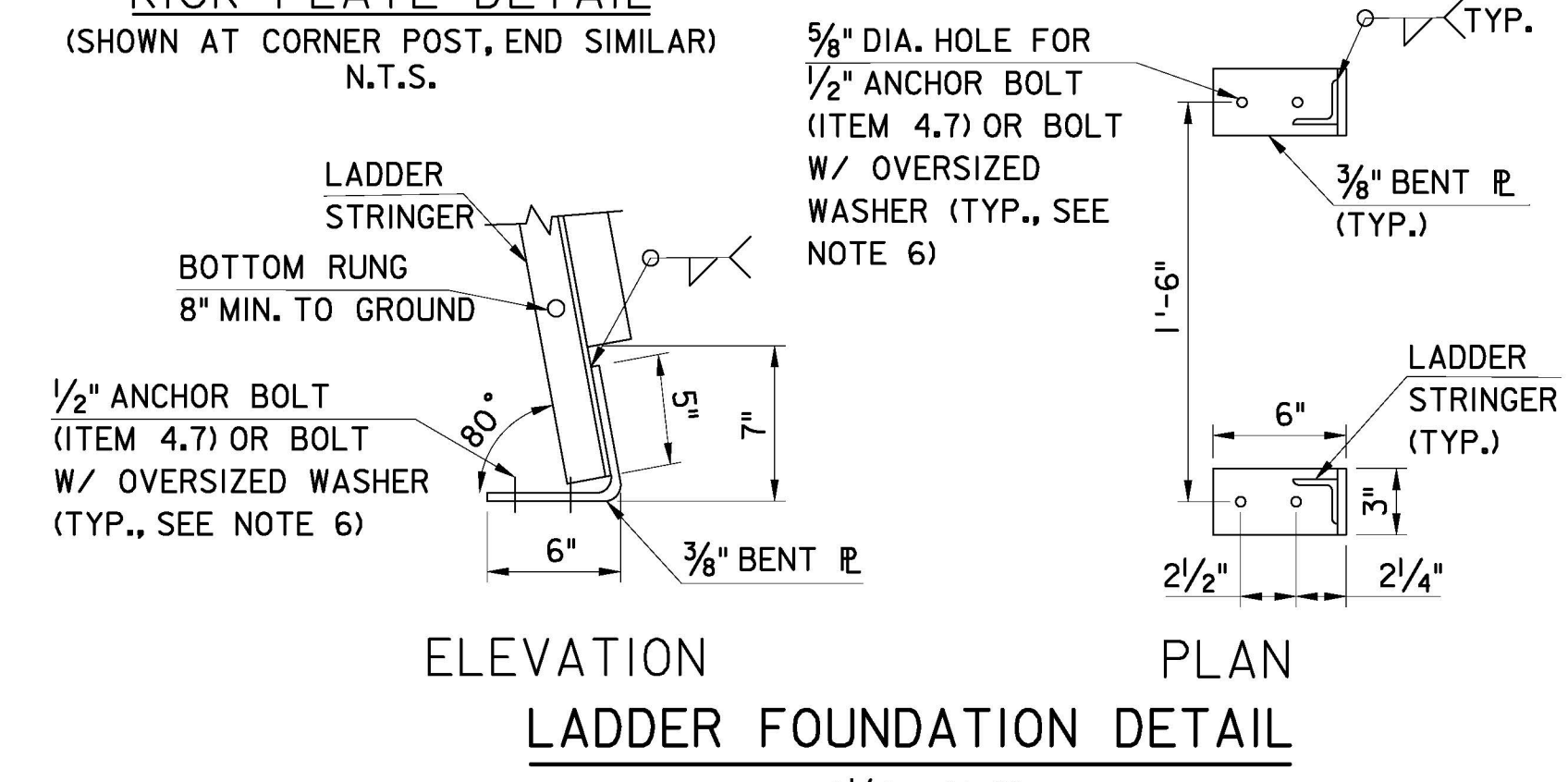
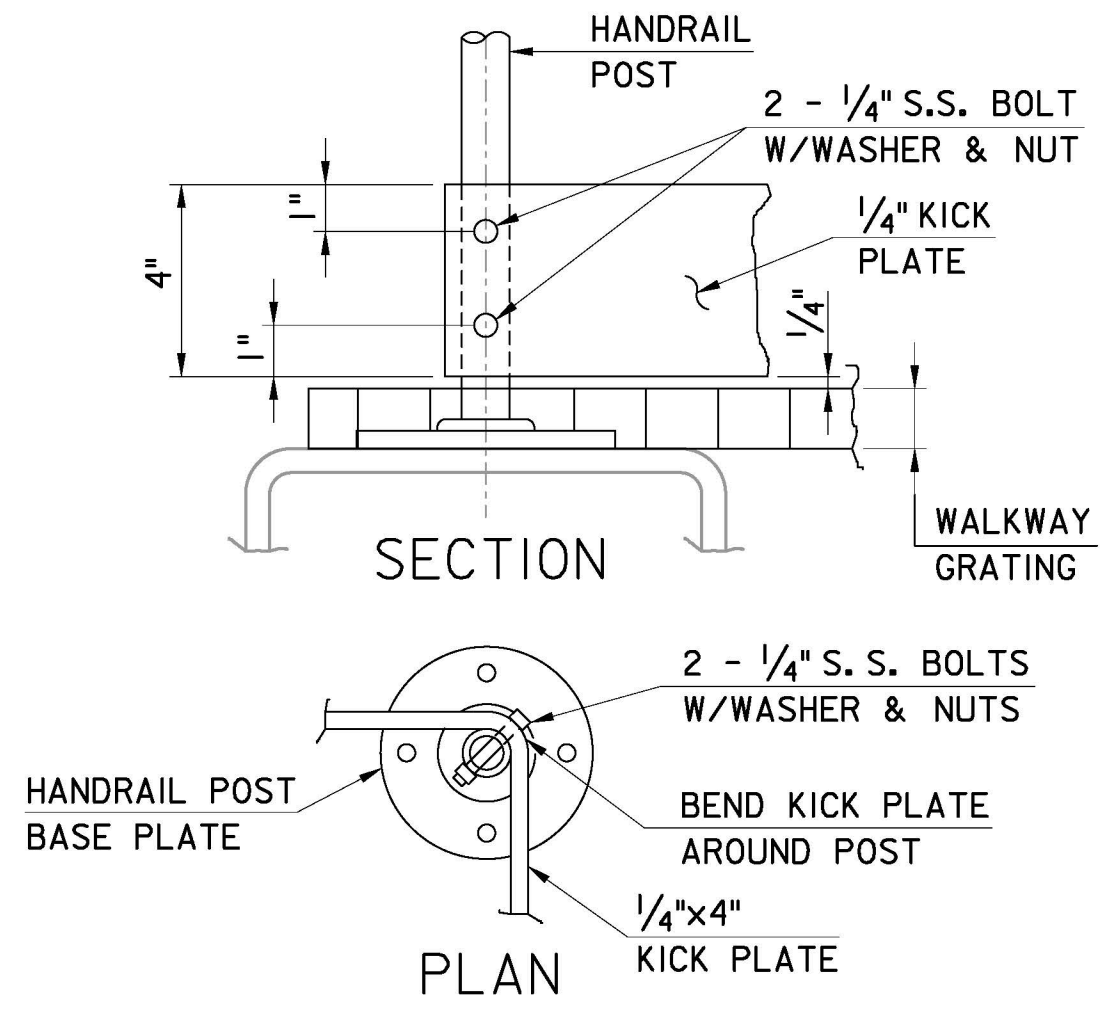
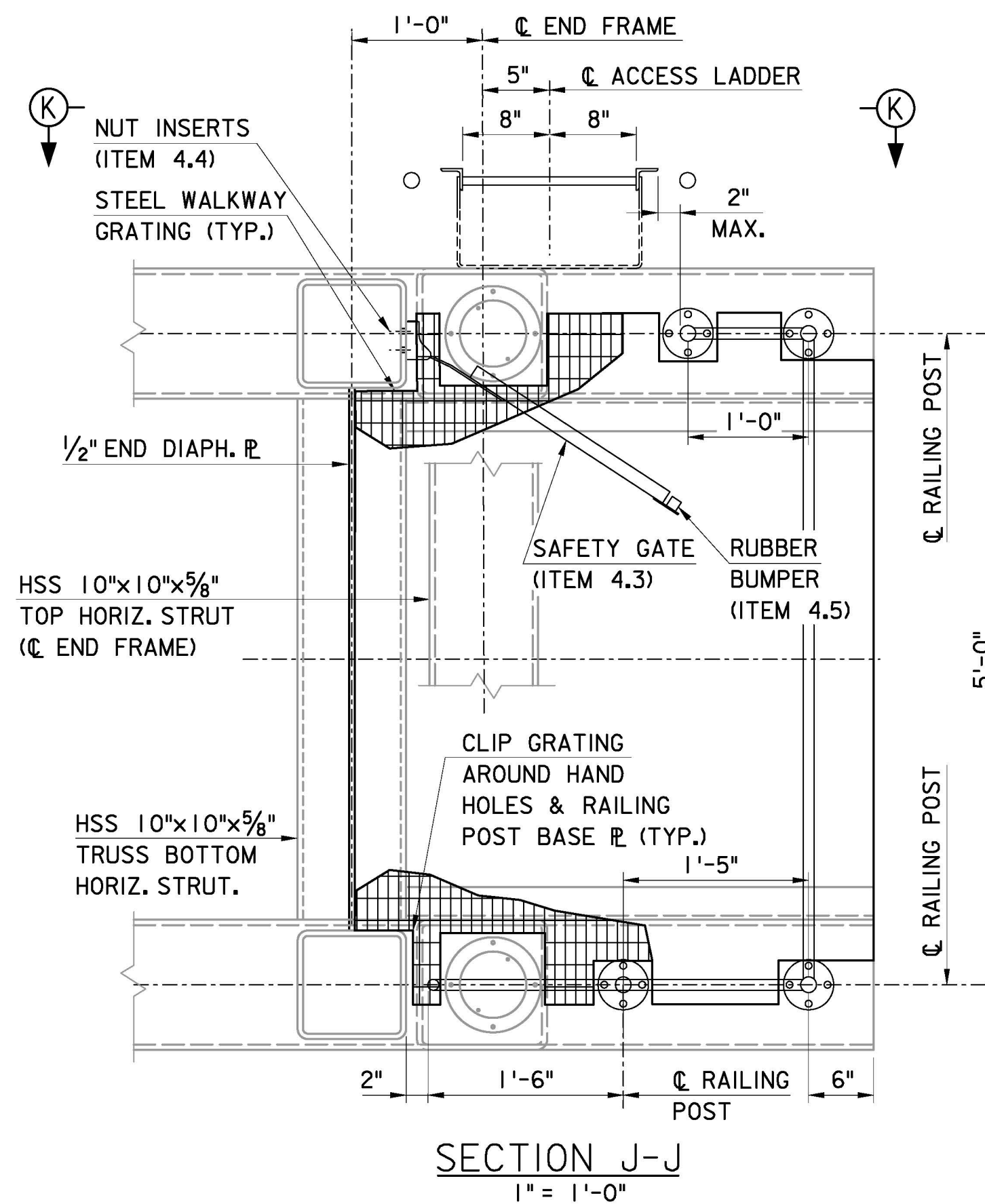
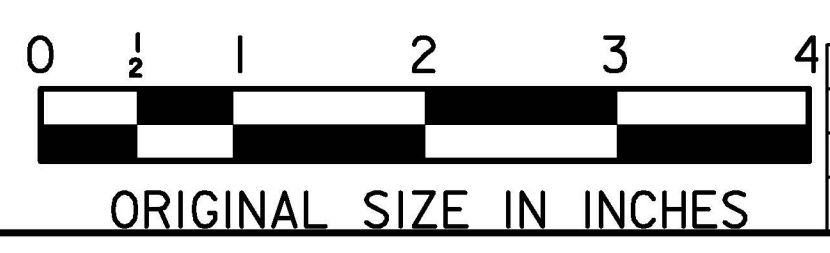


- NOTES:**
1. THE LADDER ASSEMBLY AND HANDRAILS SHALL BE HOT-DIP GALVANIZED IN ACCORDANCE WITH ASTM A123. SPOT REPAIR ALL DAMAGED GALVANIZING LADDER ASSEMBLIES & HAND RAILS AFTER FABRICATION IN ACCORDANCE WITH ASTM A780.
  2. STEEL GRATING SHALL BE COPED TO FIT AROUND VERTICAL STRUT MEMBERS AND ALUMINUM HANDRAIL POST, AS REQUIRED.
  3. FOR DETAIL 13, HANDRAIL DETAIL, SECURITY LADDER GUARD DETAIL, HASP PLATE DETAIL, AND LADDER ATTACHMENT TO PEDESTAL DETAIL, SEE SHEET CM-7.
  4. HOIST RING SHALL BE DRILLED AND TAPPED INTO THE END VERTICAL STRUT.

- N.T.S.
5. RUBBER BUMPERS SHALL BE PLACED BETWEEN THE SAFETY GATE AND ALUM. HANDRAIL TO AVOID CONTACT BETWEEN THE DISSIMILAR METALS. REAM HOLES AS NECESSARY TO INSERT THE THREADED STUDS OF THE RUBBER BUMPERS INTO THE SAFETY GATE AND SECURE WITH A NUT.
  6. ANCHOR BOLTS SHALL BE USED FOR CONCRETE MOUNTED LADDERS; BOLTS WITH OVERSIZED WASHERS SHALL BE USED FOR GRATING MOUNTED LADDERS.
  7. THE TOP LADDER RUNG SHALL BE AT THE SAME ELEVATION AS THE WALKWAY GRATING ON THE PLATFORM.
  8. FOR ITEMS LIST, SEE SHEET CM-10.



NEW JERSEY TURNPIKE AUTHORITY		2010 STANDARD	
NEW JERSEY TURNPIKE		DRAWING	
OVERHEAD SPAN HCMS SUPPORT STRUCTURES		CM-8	
ACCESS LADDER AND PLATFORM DETAILS			
OFFICE OF THE CHIEF ENGINEER NEW JERSEY TURNPIKE AUTHORITY	WOODBRIDGE	NEW JERSEY	
CONTRACT NO.		SHEET NO. OF	