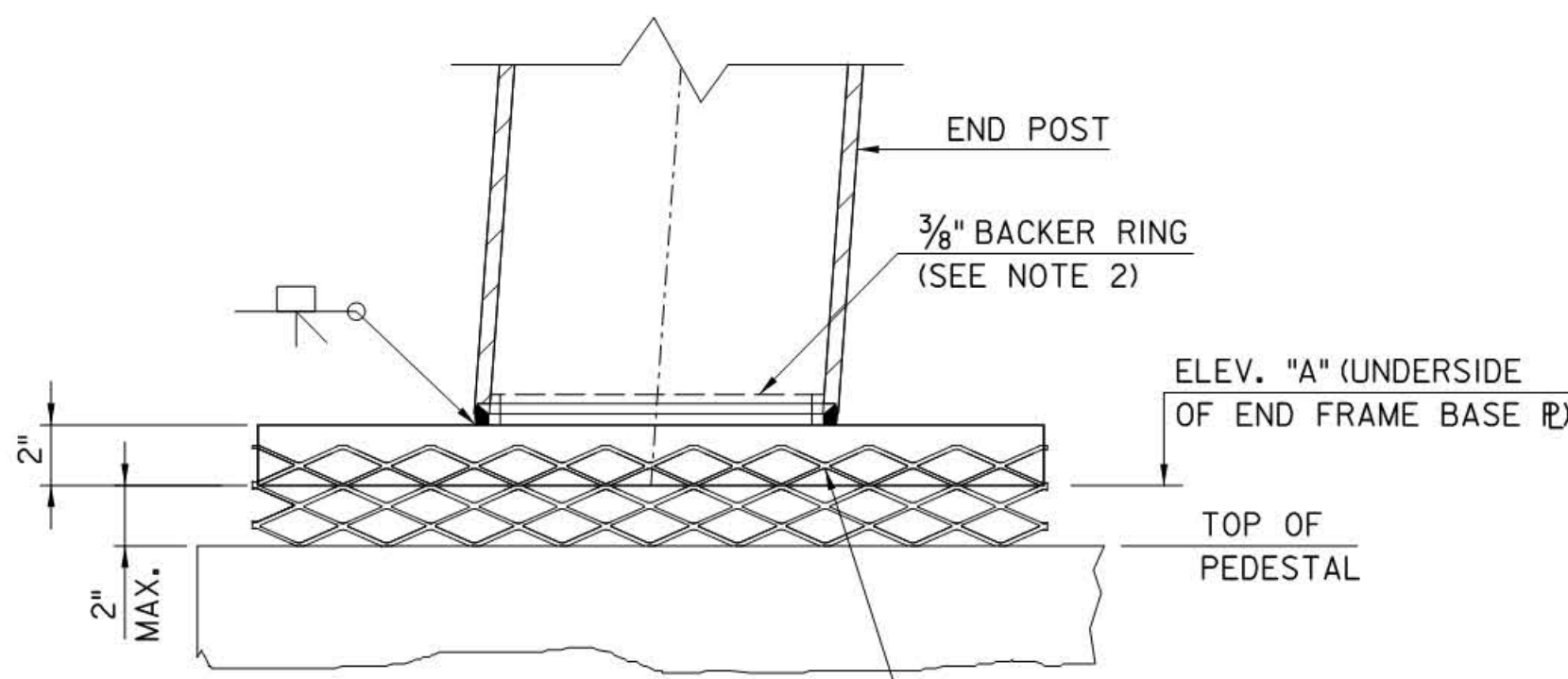


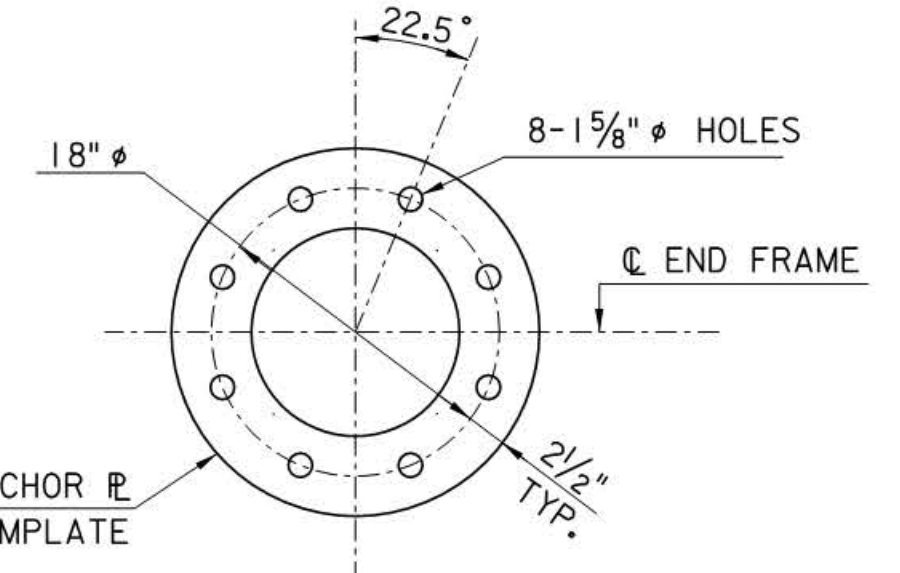
BASE PLATE PLAN VIEW



SECTION G-G

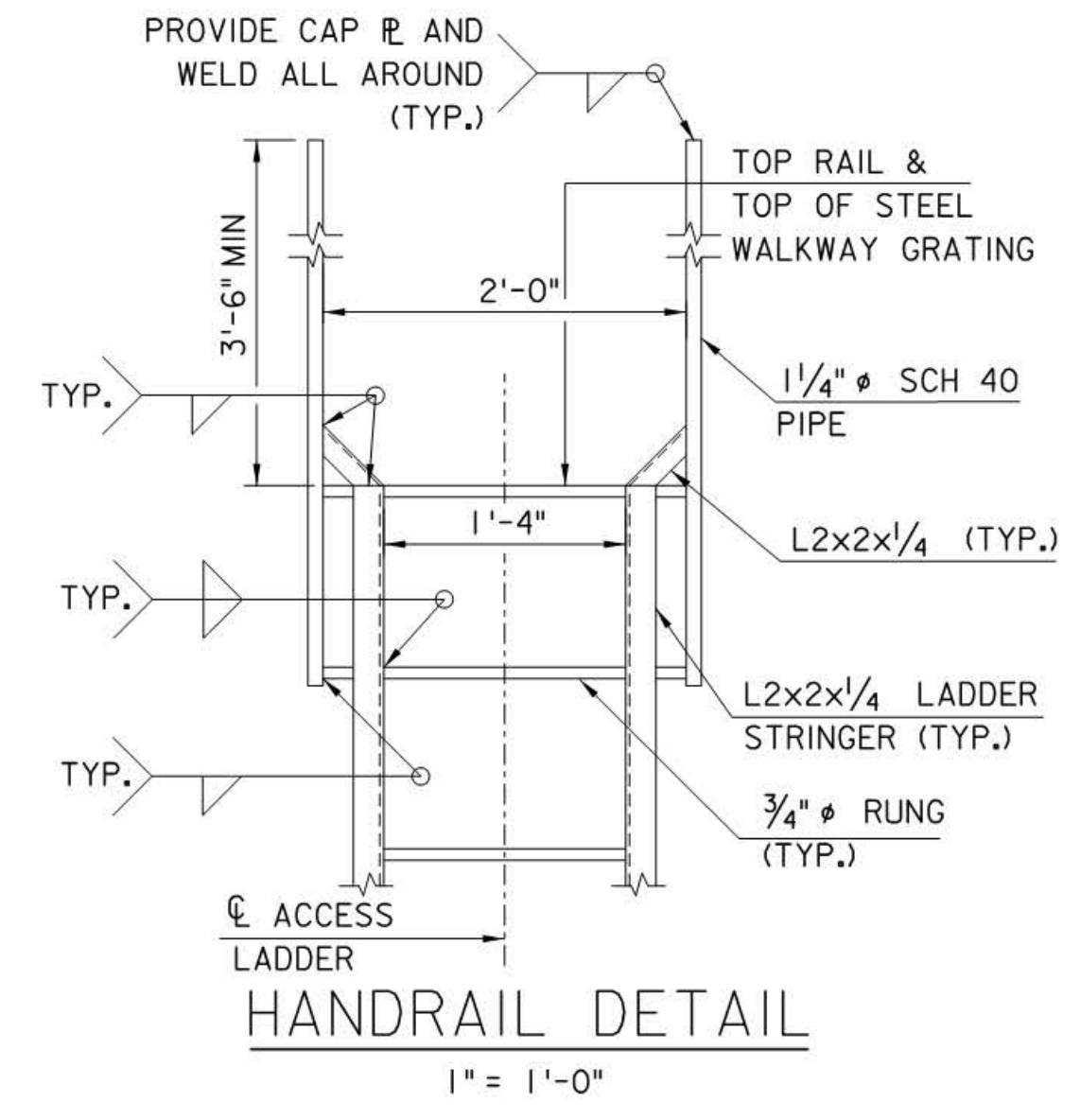
DETAIL 8

N.T.S.



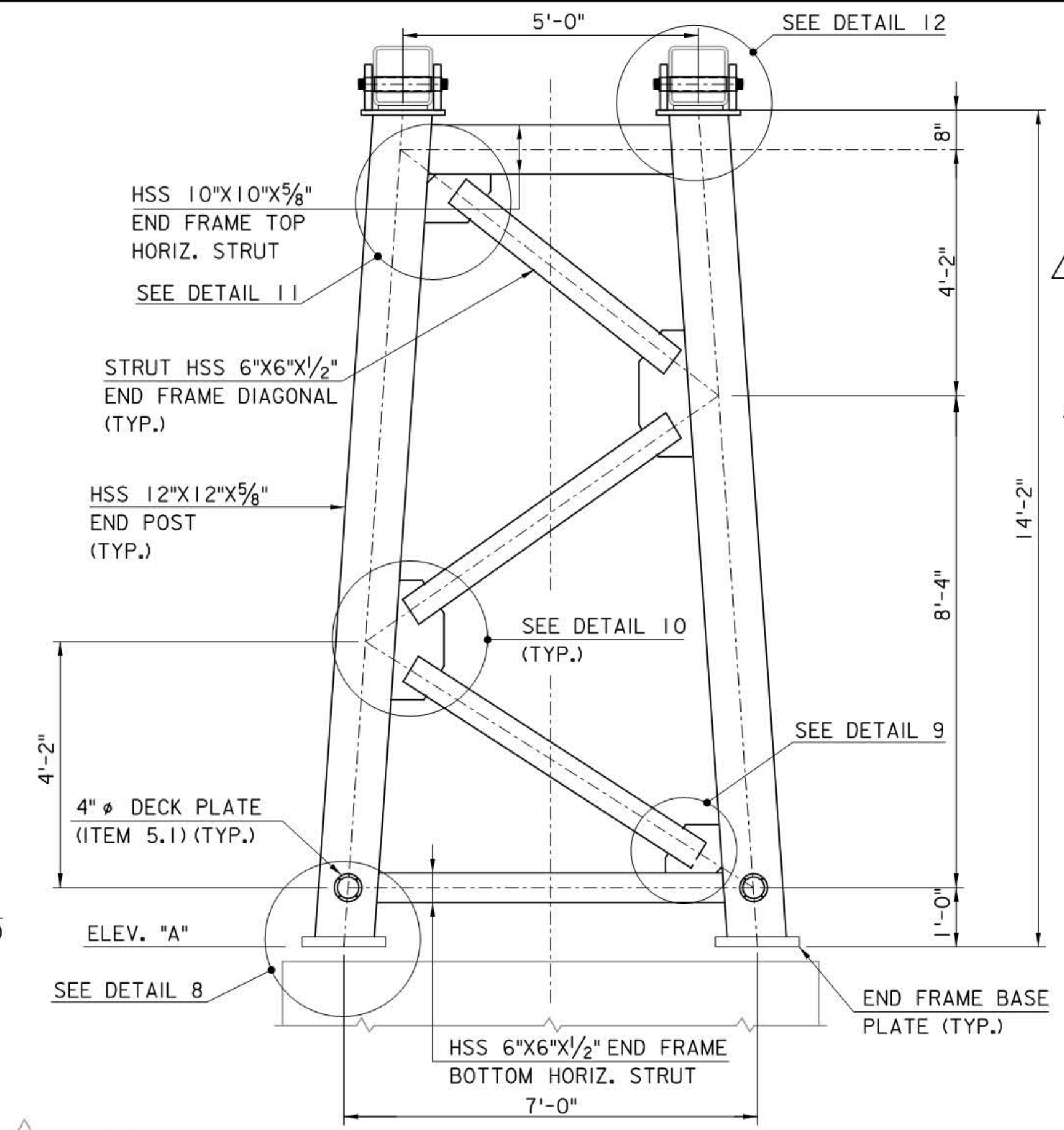
ANCHOR PLATE & TEMPLATE DETAIL

(SEE ANCHOR BOLT DETAIL ON SHEET VM-8 FOR PLACEMENT)
N.T.S.



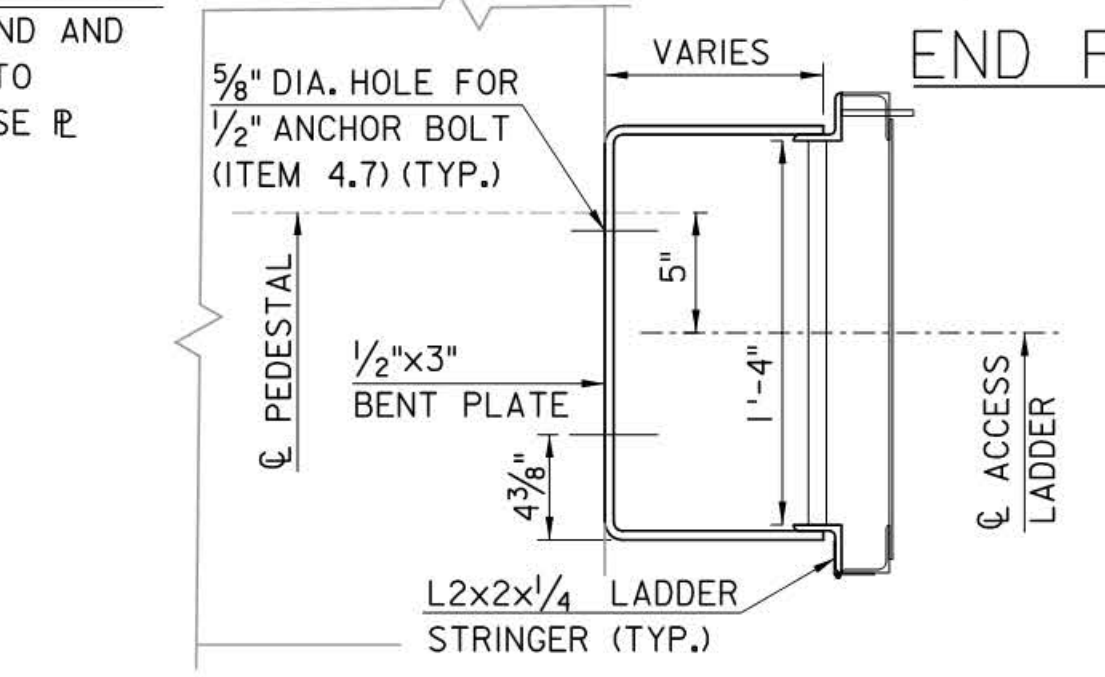
HANDRAIL DETAIL

1" = 1'-0"



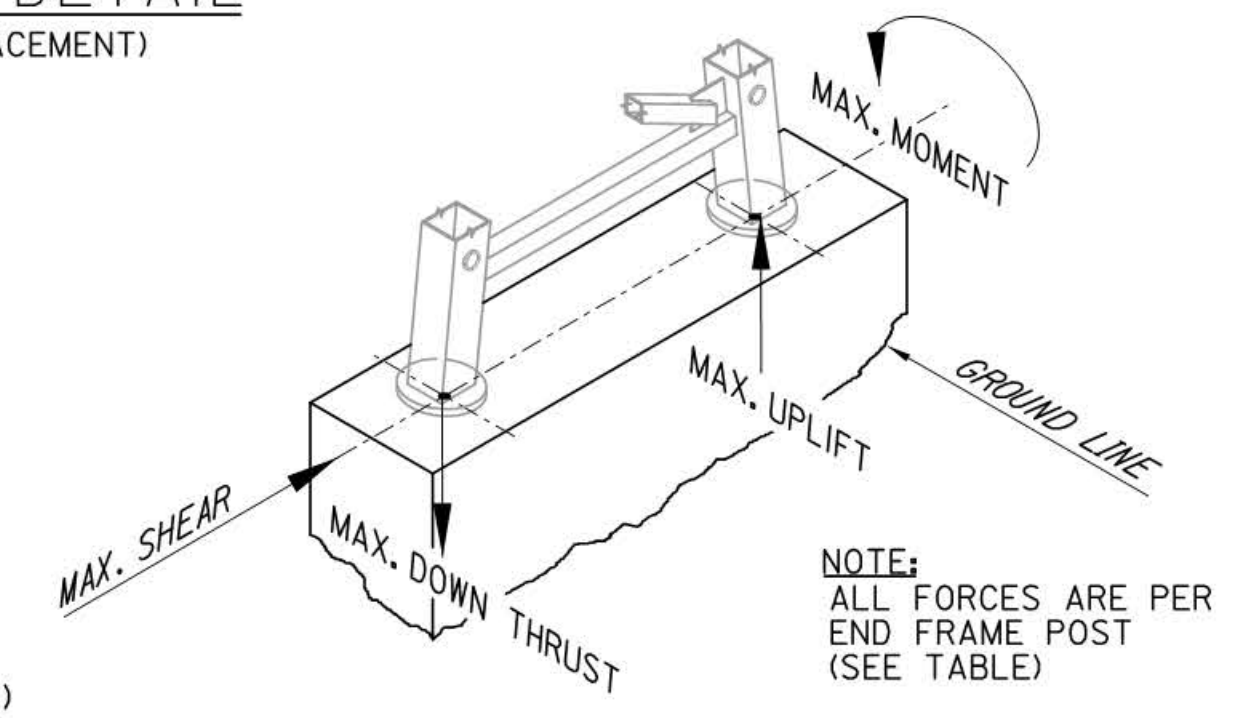
END FRAME ELEVATION

1/2" = 1'-0"



LADDER ATTACHMENT TO PEDESTAL

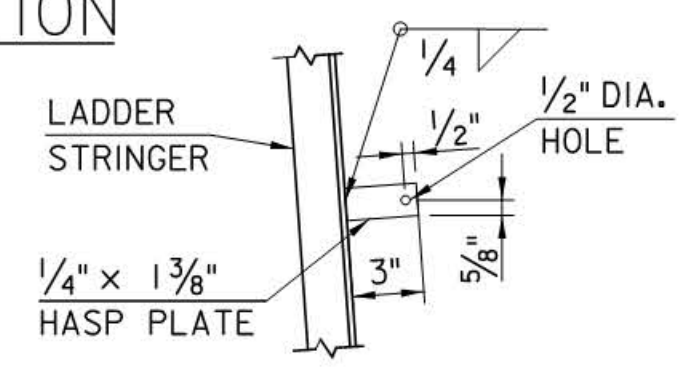
(FOR ADDITIONAL DETAILS NOT SHOWN, SEE DETAIL 13)
1/2" = 1'-0"



FOUNDATION LOADING DIAGRAM

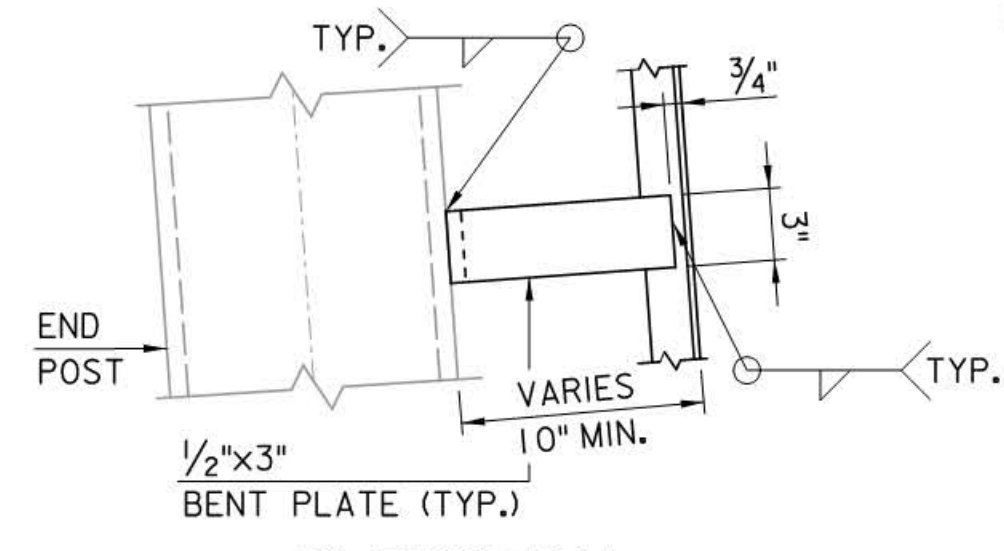
N.T.S.

FOUNDATION DESIGN LOADS (PER POST)				
STRUCTURE TYPE	DOWN THRUST (KIP)	UPLIFT (KIP)	SHEAR (KIP)	MOMENT (KIP-FT)
MAINLINE SPANS ≤ 105'	-117.5	75.2	23.2	29.7
MAINLINE 105' < SPANS ≤ 120'	-135.0	89.2	26.2	36.0
RAMP SPANS ≤ 120'	-97.9	57.8	19.9	30.1

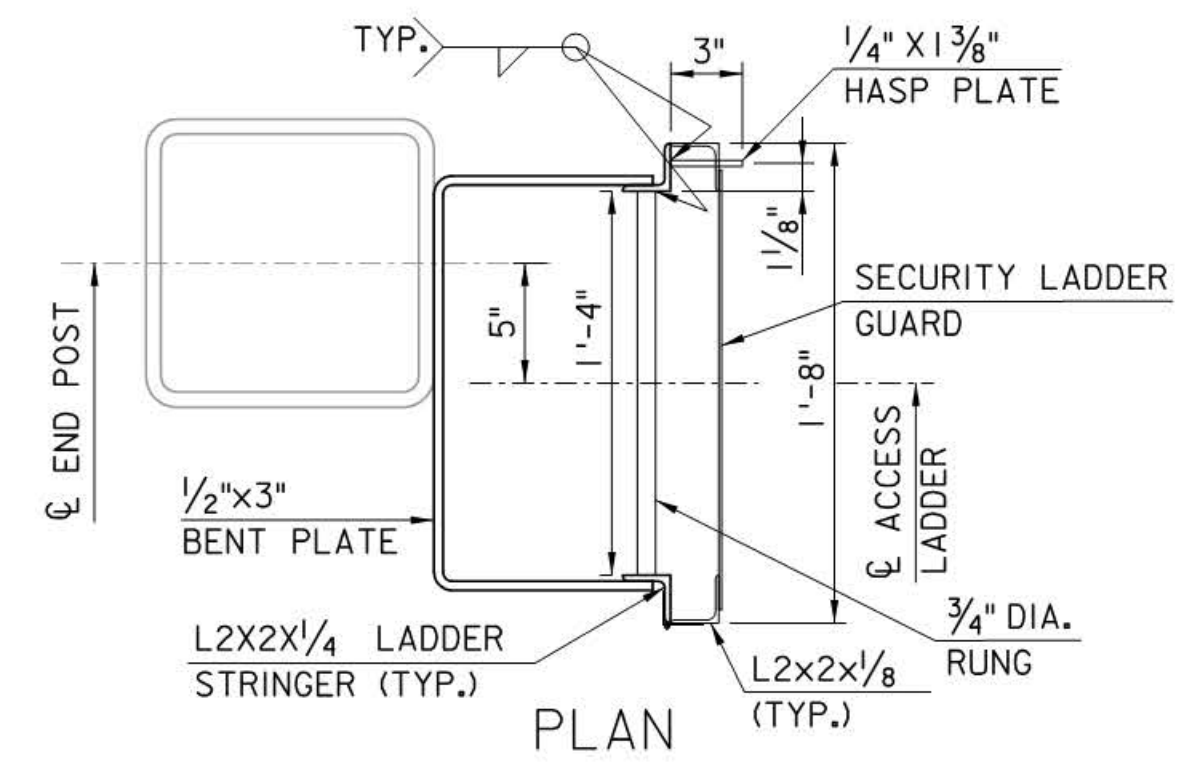


HASP PLATE DETAIL

1/2" = 1'-0"

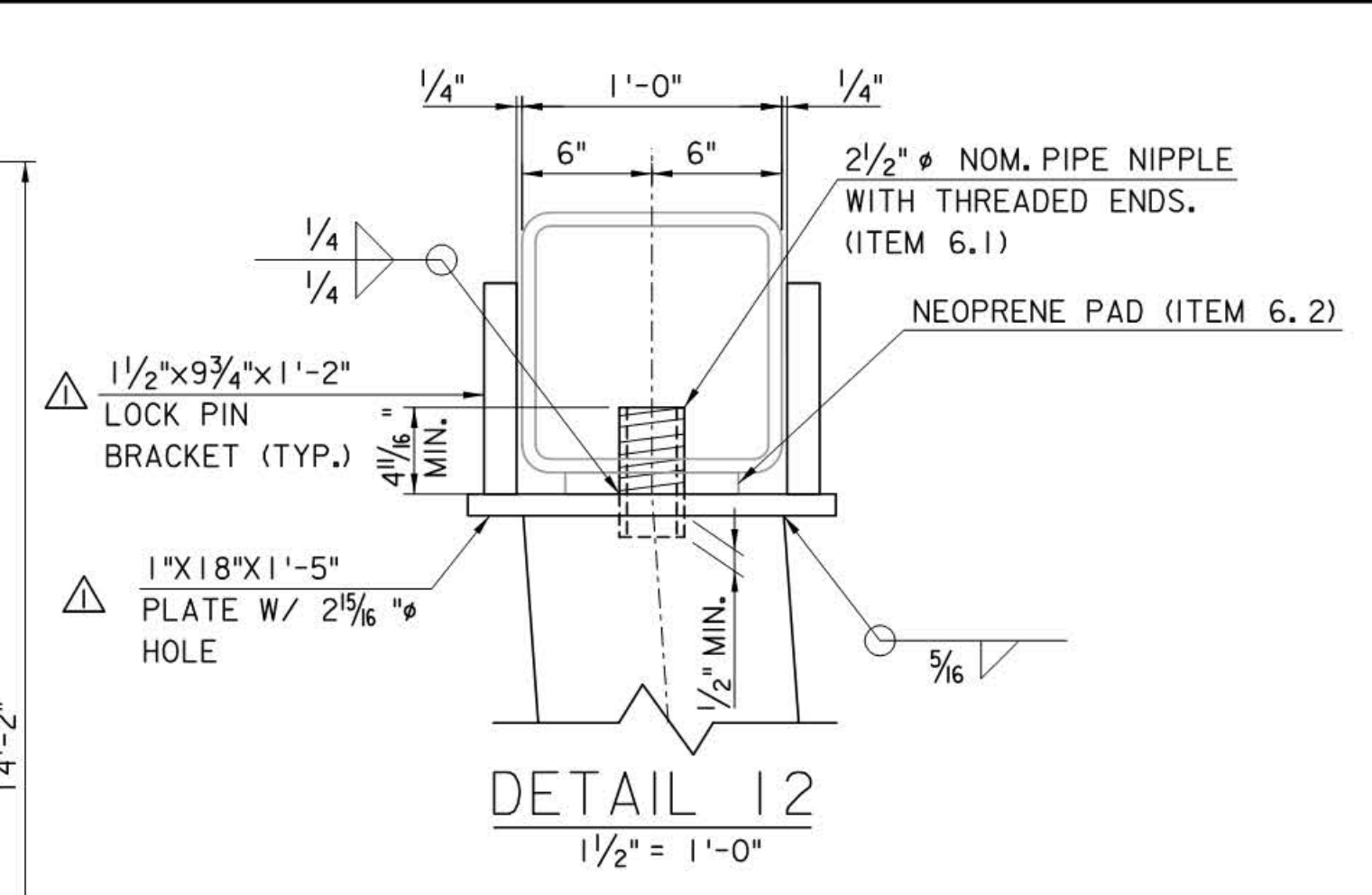


ELEVATION



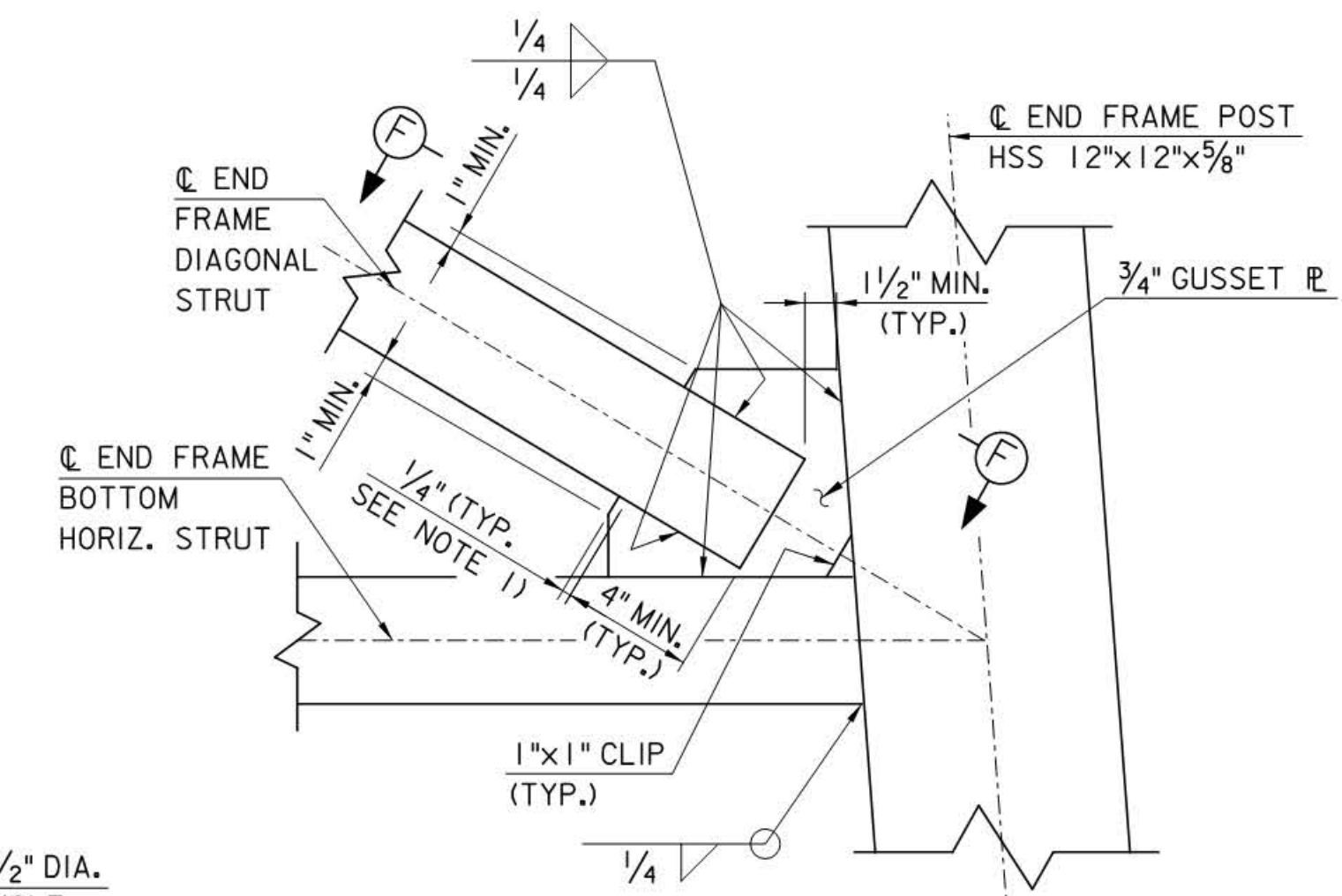
PLAN

1/2" = 1'-0"



DETAIL 12

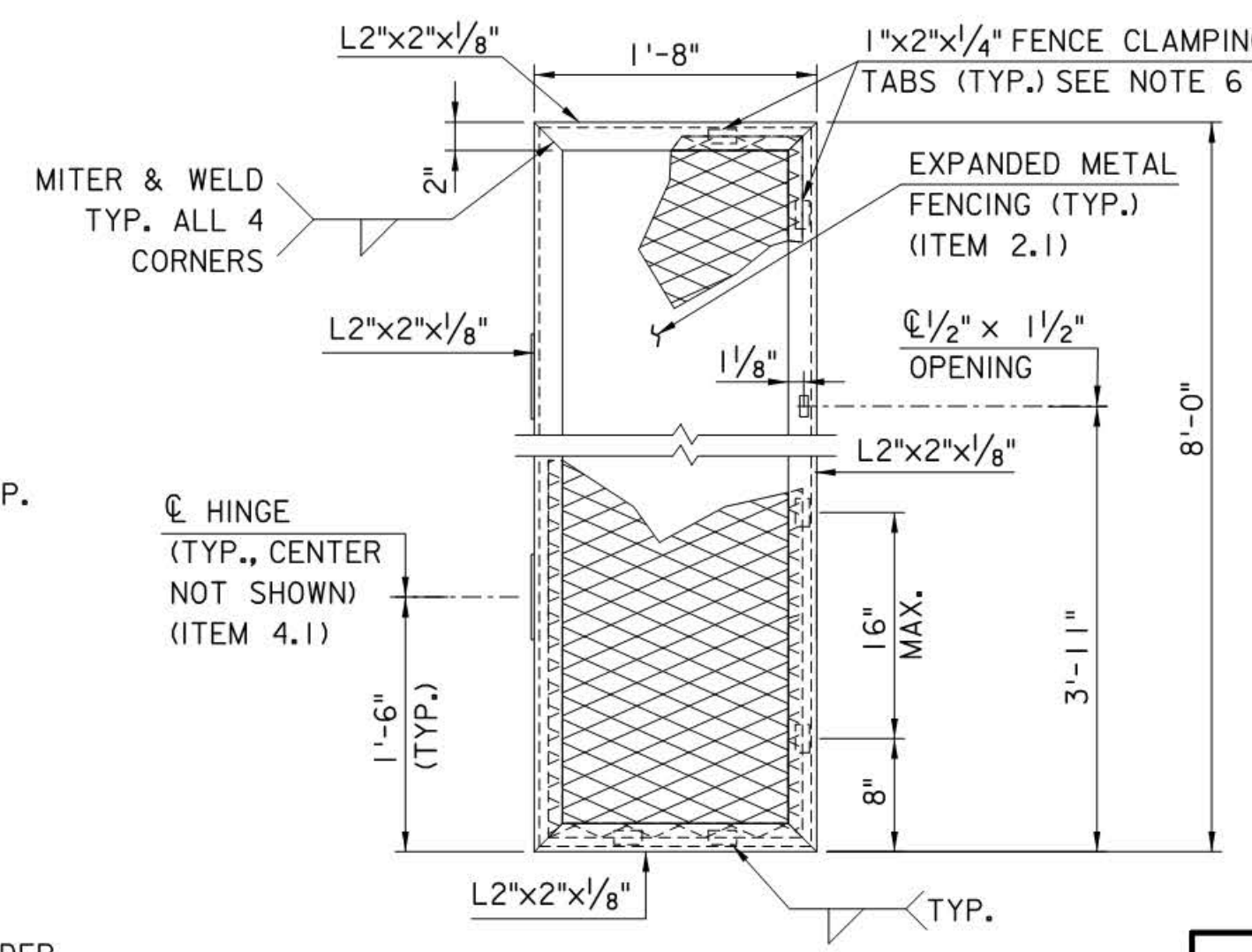
1/2" = 1'-0"



DETAIL 9 (AS SHOWN)

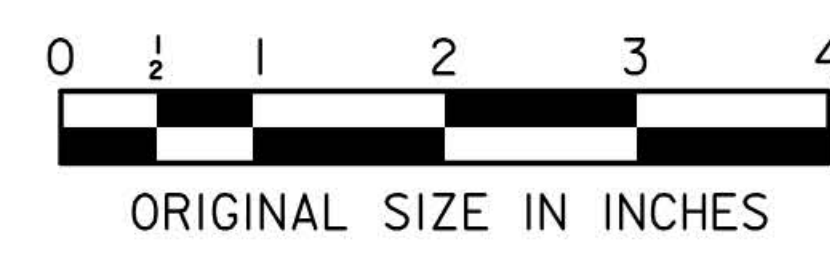
DETAIL 11 (SIMILAR)

1/2" = 1'-0"

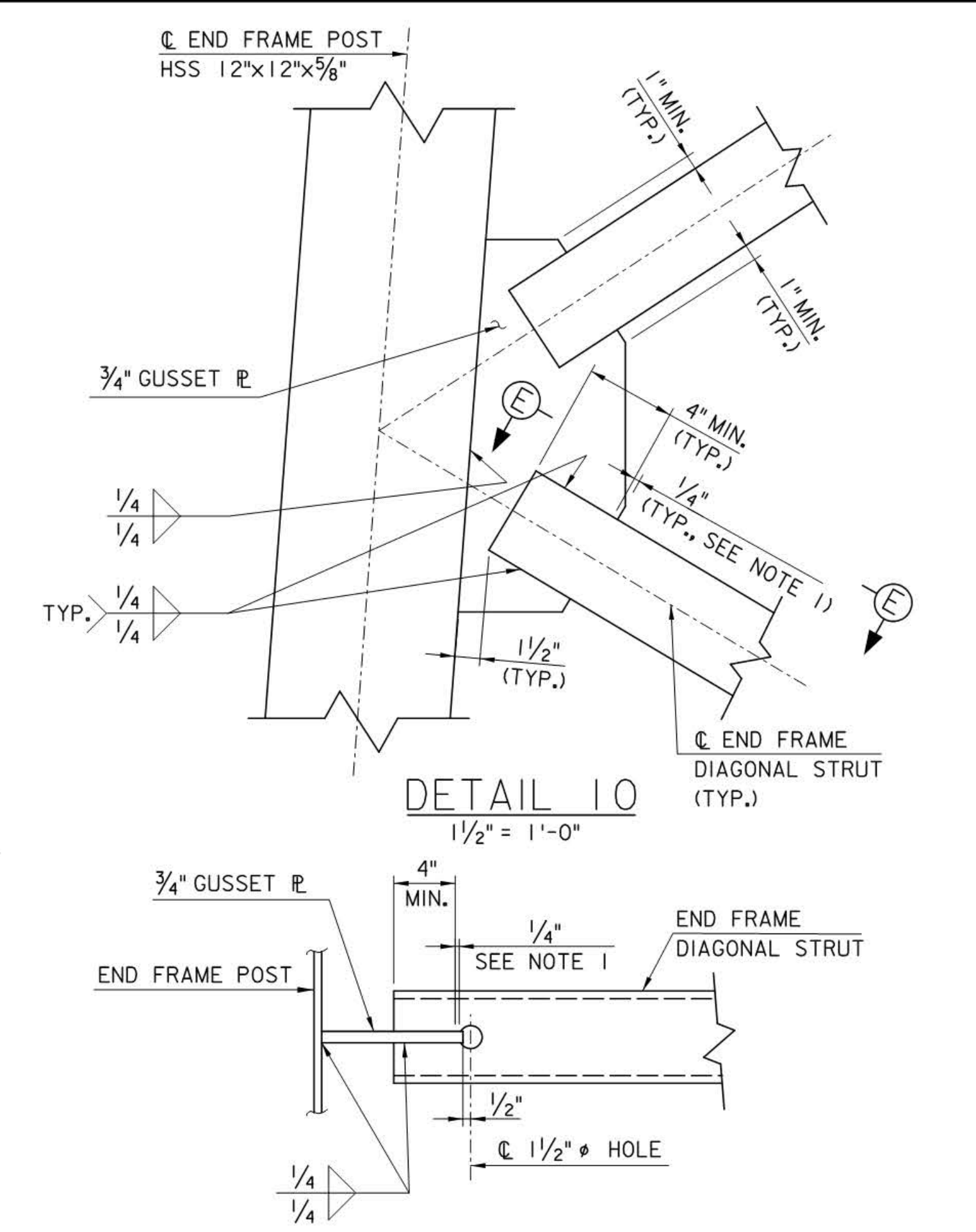


SECURITY LADDER GUARD

1" = 1'-0"



ORIGINAL SIZE IN INCHES



SECTION E-E (AS SHOWN)

SECTION F-F (OPP. HD.)

1/2" = 1'-0"

- NOTES:
1. WELDS FOR HSS TO GUSSET PLATE CONNECTIONS SHALL BE TERMINATED 1/4" FROM THE EDGE OF THE GUSSET PLATE.
 2. FULL PENETRATION WELDED END POST TO BASE PLATE CONNECTION WITH THE BACKER RING ATTACHED TO THE PLATE WITH A CONTINUOUS FILLET WELD AROUND THE INTERIOR FACE OF THE BACKER RING. THE THICKNESS OF THE BACKER RING SHALL NOT EXCEED 3/8".
 3. FOR ITEMS LIST, SEE SHEET CM-10.
 4. FOR ANCHOR BOLT DETAILS, SEE SHEET VM-8.
 5. THE TWO BASE PLATE TEMPLATES FOR EACH END FRAME SHALL BE PERMANENTLY ATTACHED TO EACH OTHER WHILE CONNECTED TO THE END FRAME TO ENSURE PROPER PLACEMENT OF THE ANCHOR BOLTS DURING FOUNDATION CONSTRUCTION. EACH TEMPLATE PAIR SHALL BE CLEARLY LABELED AS TO THE CORRECT END POST OF THE STRUCTURE AND AN ARROW POINTING UPSTATION. ALL MARKINGS SHALL BE VISIBLE UPON PLACEMENT.
 6. EXPANDED METAL FENCING SHALL BE RIGIDLY CLAMPED TO THE DOOR FRAME ANGLE PRIOR TO WELDING THE TABS TO ENSURE A VIBRATION FREE OPERATION. SPOT REPAIR ALL DAMAGED GALVANIZING ON FENCING AND HINGES AFTER FABRICATION IN ACCORDANCE WITH ASTM A-780.
 7. FOR LOCATION OF DETAIL 13, HASP PLATE, SECURITY LADDER GUARD AND HANDRAIL, SEE SHEET CM-8.
 8. BENT PLATE SUPPORTS SHALL BE SHOP-WELDED TO THE END FRAME AND WELDED OR FIELD-BOLTED WITH 1/2" DIA. BOLTS TO THE LADDER STRINGERS.

APP.	NO.	DATE	REVISION
I	4/16		REVISED DETAIL 12
C	3/14		CONFORMED DRAWING

CONTRACT NO.

NEW JERSEY TURNPIKE AUTHORITY
NEW JERSEY TURNPIKE
 OVERHEAD SPAN HCMS SUPPORT STRUCTURES
END FRAME DETAILS
 OFFICE OF THE CHIEF ENGINEER
 NEW JERSEY TURNPIKE AUTHORITY
 WOODBRIDGE NEW JERSEY
 2010 STANDARD
 DRAWING **CM-7**

SHEET NO. OF