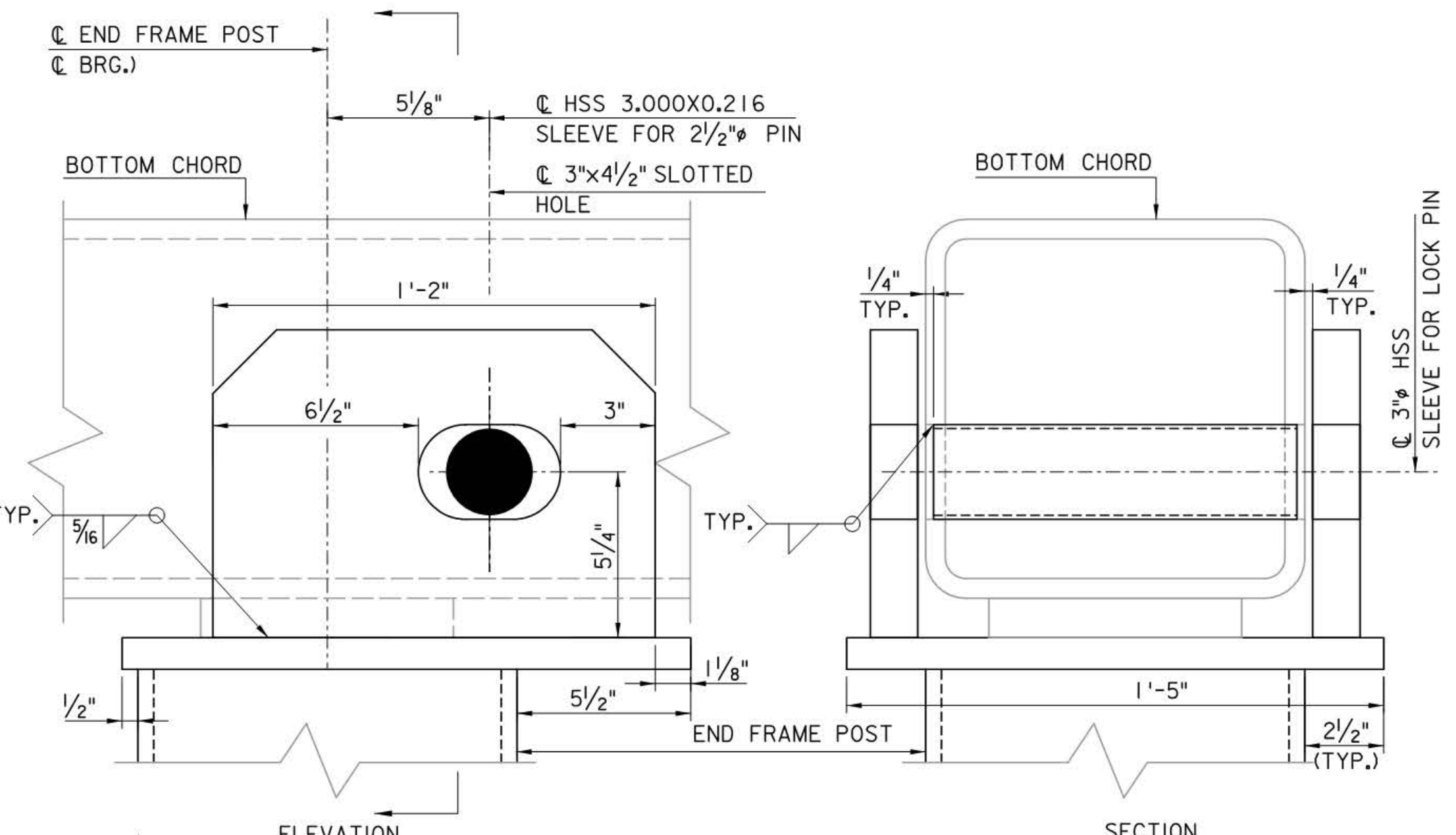
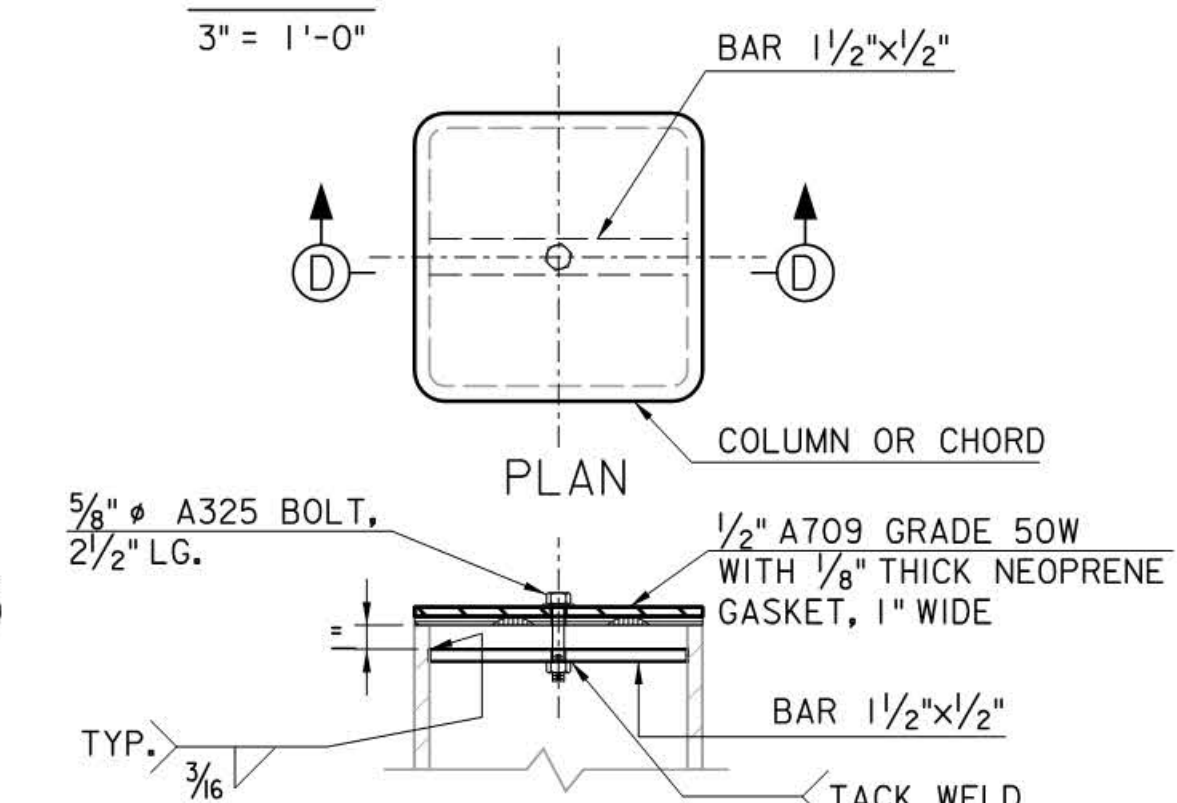


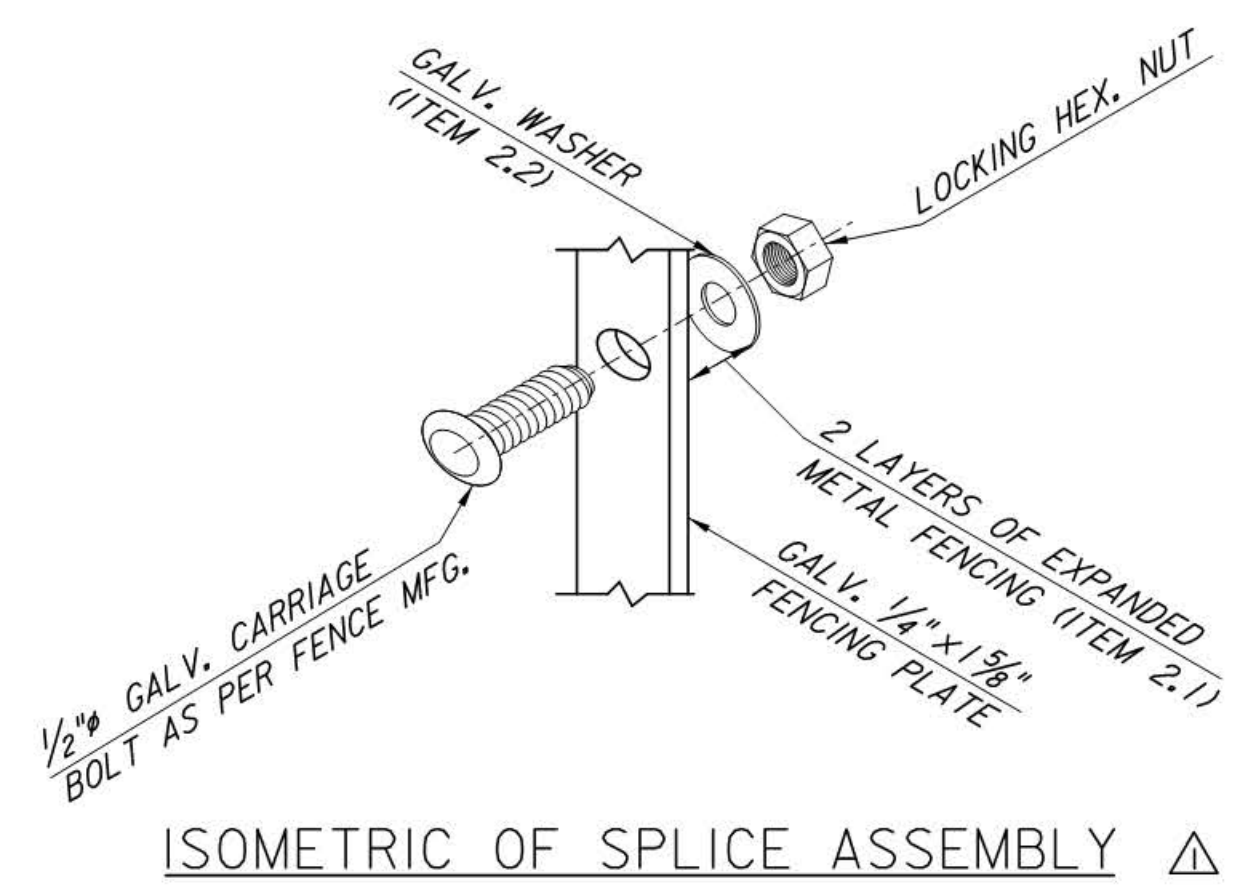
EXPLODED DETAIL OF END FRAME ASSEMBLY
N.T.S.



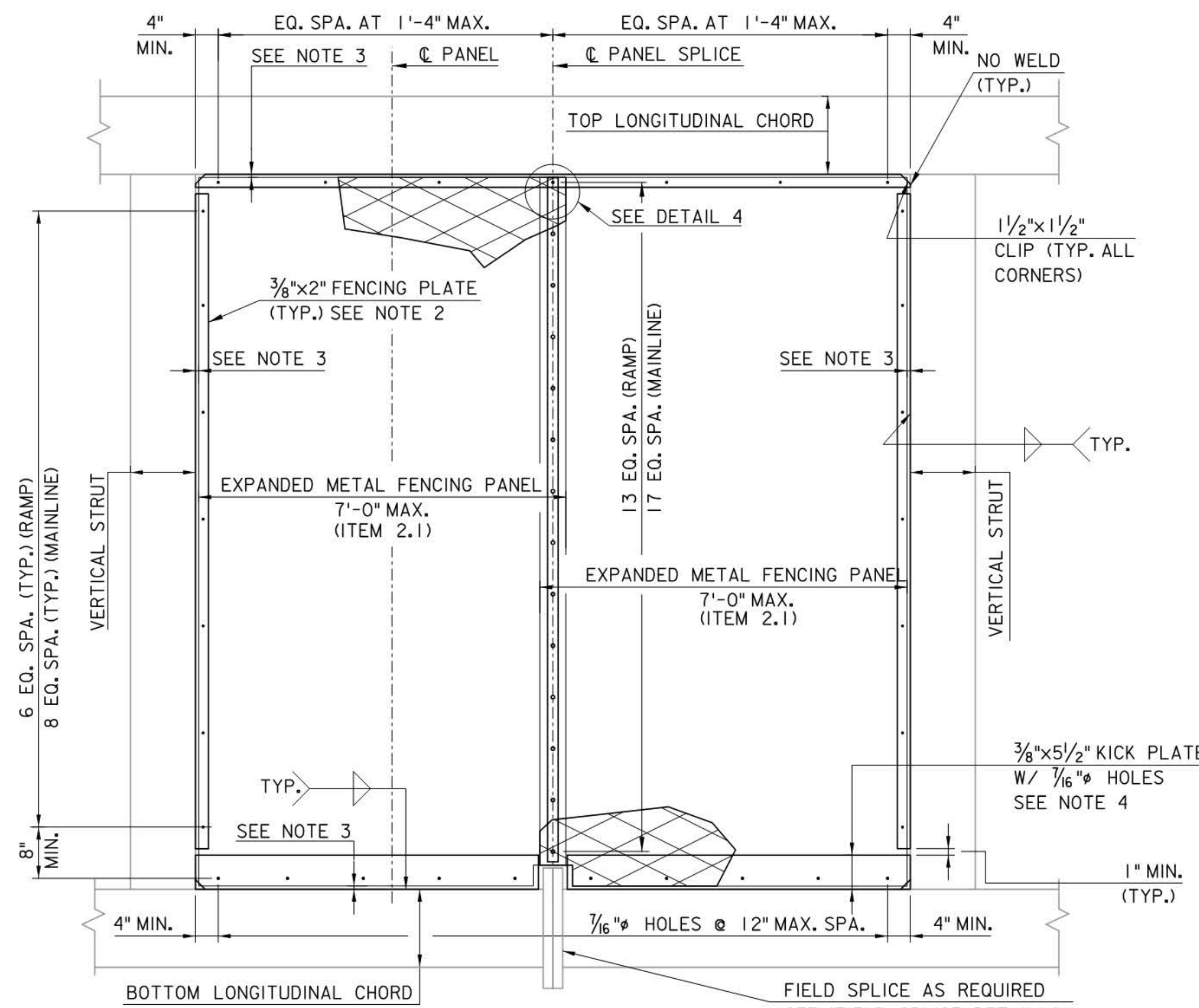
LOCK PIN BRACKET
DETAIL
3" = 1'-0"



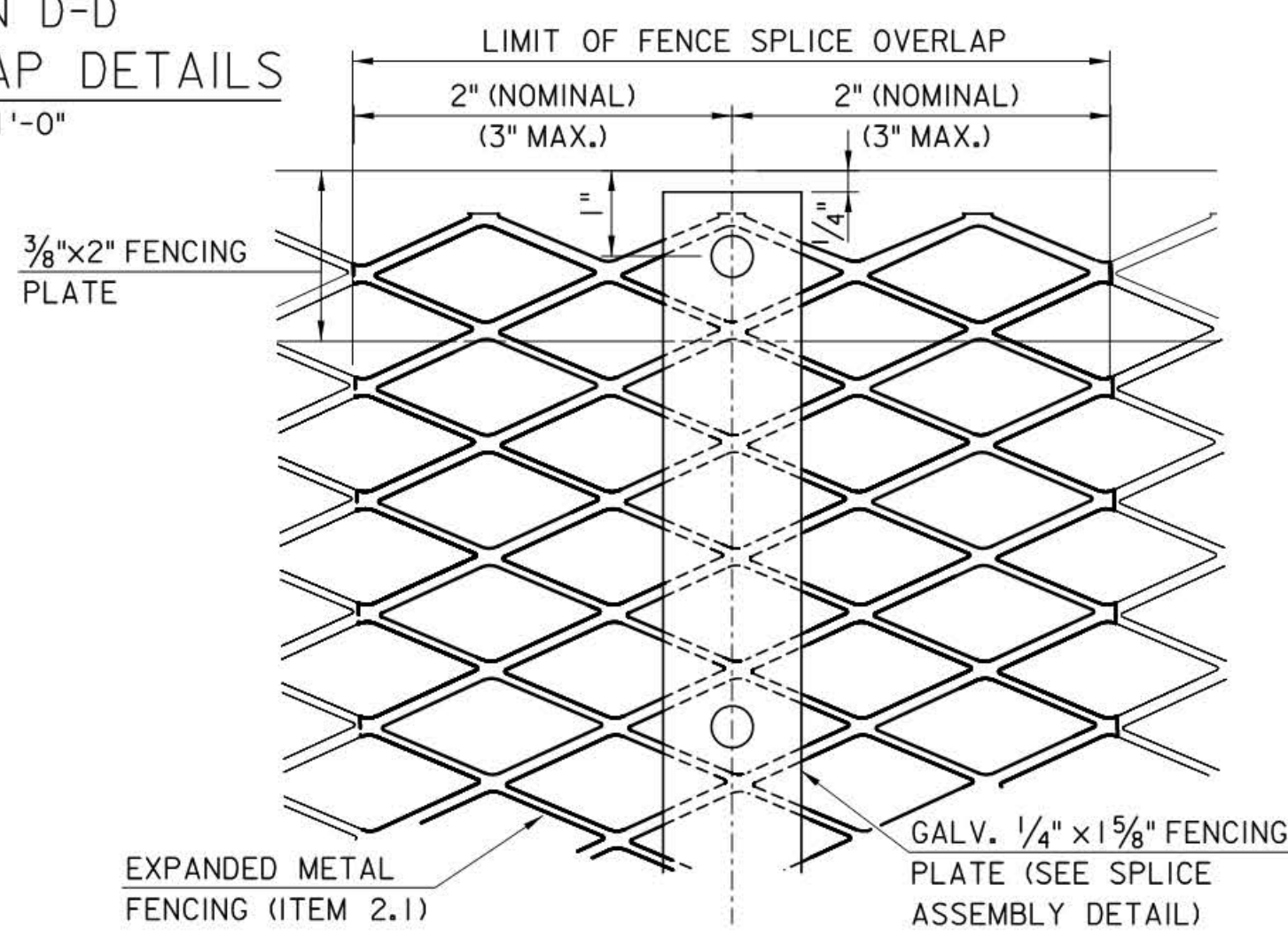
REMOVABLE CAP DETAILS
1 1/2" = 1'-0"



ISOMETRIC OF SPLICE ASSEMBLY



TRUSS PANEL
EXPANDED METAL FENCING DETAIL
3/4" = 1'-0"



DETAIL 4
EXPANDED METAL FENCE
SPLICE DETAIL

EXPANDED METAL FENCING (ITEM 2.1):

- 1.33" x 3.00" LG. BOND TO BOND W/9 DIAMONDS/LF
- 0.142" WIDTH
- 0.134" THICKNESS
- 75% OPEN AREA

- NOTES:
1. THE UNTHREADED GRIP LENGTH OF THE LOCK PIN SHALL BE 15 3/4". PLACE A RECESS NUT AT EACH END OF THE PIN.
 2. DRILL 7/16" DIA. HOLES FOR 3/8" DIA. BOLTS IN FENCING PLATES.
 3. EXPANDED METAL FENCING SHALL BE A MINIMUM OF 1/2" CLEAR TO ALL CHORD AND STRUT MEMBERS. FOR PLACEMENT ON STRUCTURE, SEE DETAIL 2 ON SHEET CM-4.
 4. KICK PLATE SHALL ONLY BE FURNISHED AT BOTTOM LONG. CHORDS.
 5. FOR ITEMS LIST, SEE SHEET CM-10.
 6. INSERT MAINLINE NEOPRENE PAD AND 7/4" O.D. WASHER OVER PIPE NIPPLE THIS END. INSTALL REMOVABLE CAP PLATE.



APP. NO.	DATE	REVISION
2	4/16	REVISED LOCK PIN BRACKET DETAIL
1	4/11	REVISED DETAILS AND NOTES
0	1/10	ORIGINAL DRAWING

CONTRACT NO.

NEW JERSEY TURNPIKE AUTHORITY
NEW JERSEY TURNPIKE

OVERHEAD SPAN HCMS SUPPORT STRUCTURES
TRUSS AND FENCE DETAILS

OFFICE OF THE CHIEF ENGINEER
NEW JERSEY TURNPIKE AUTHORITY

2010 STANDARD
DRAWING **CM-5**

WOODBRIDGE NEW JERSEY

SHEET NO. OF