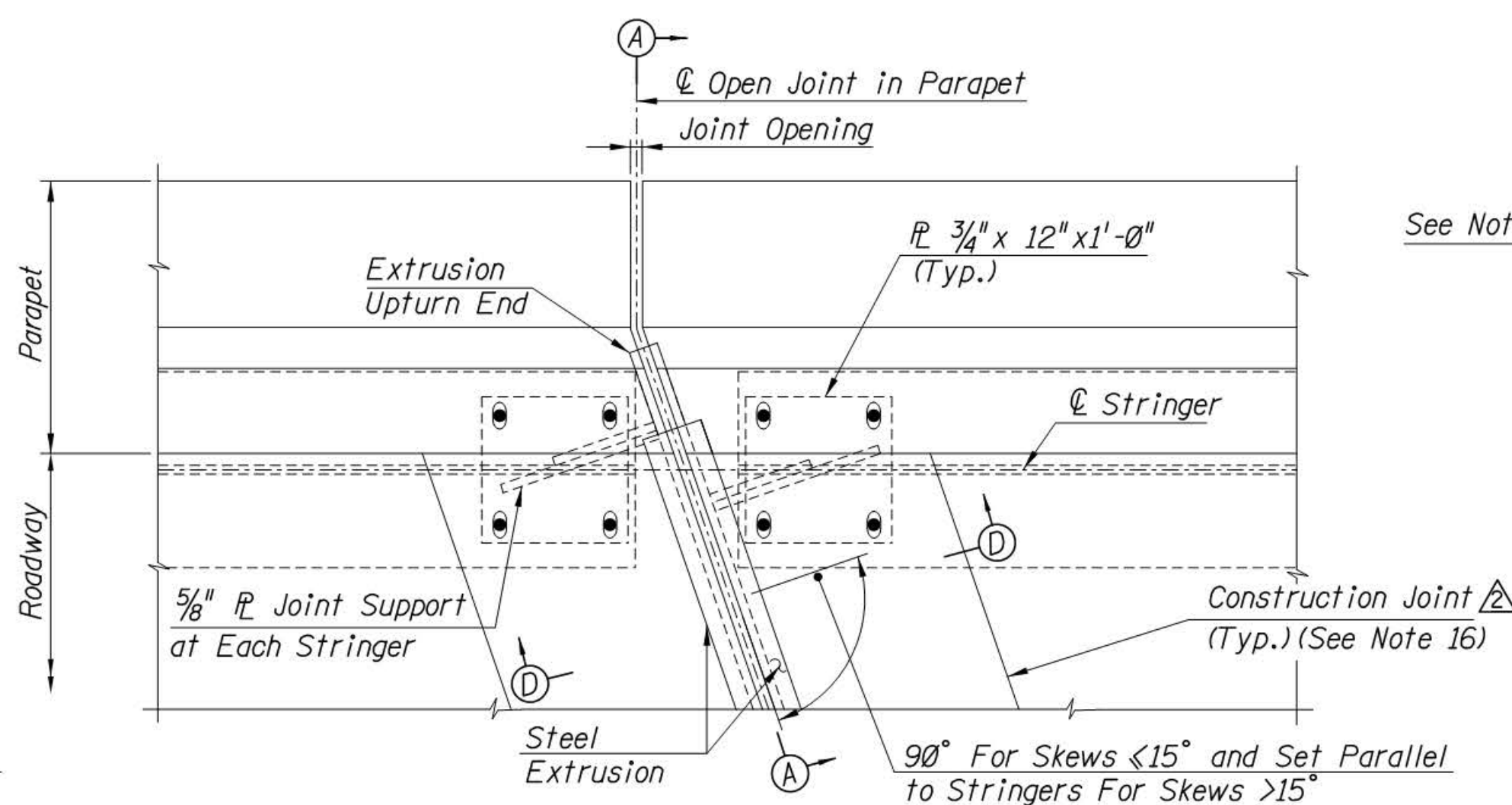
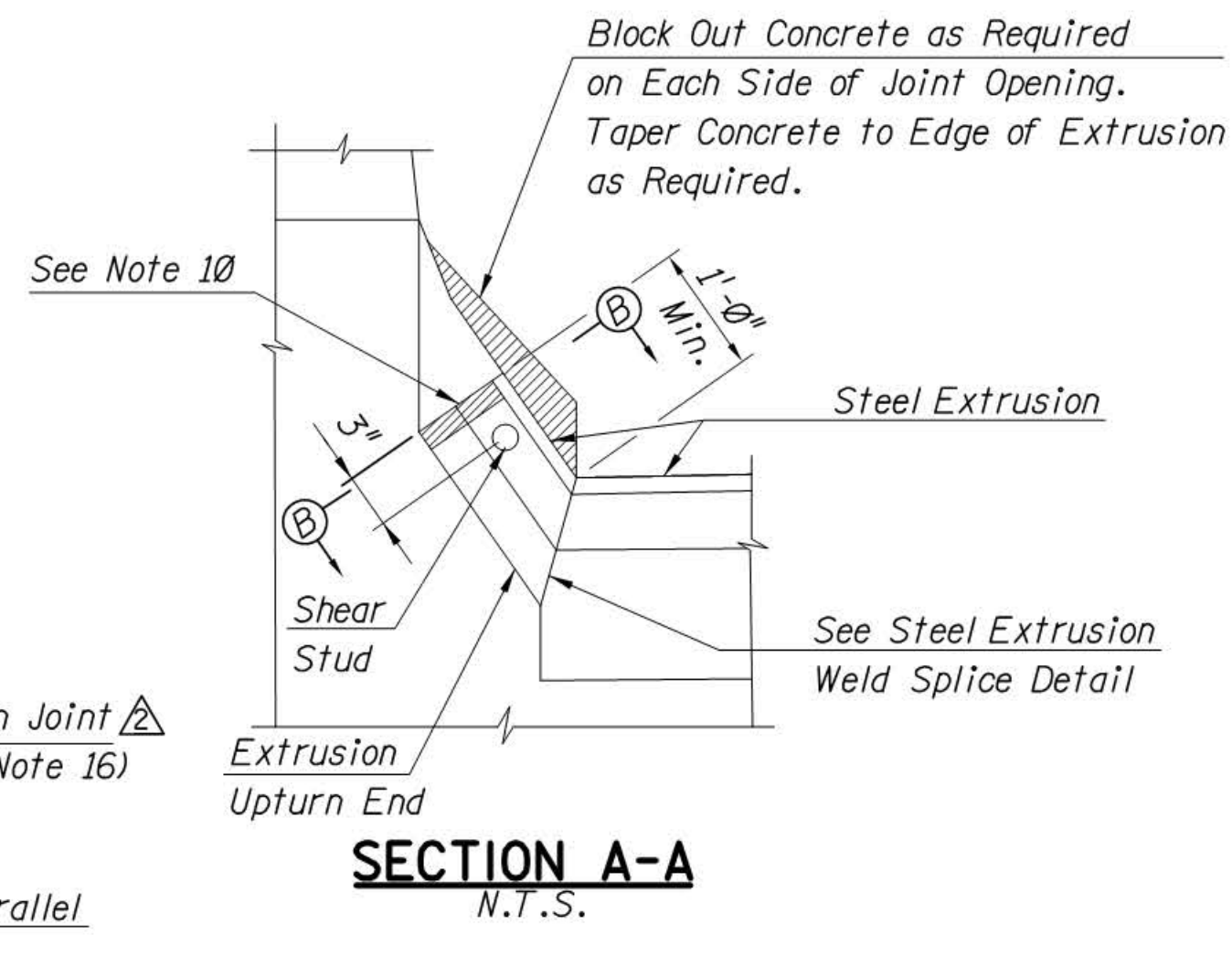


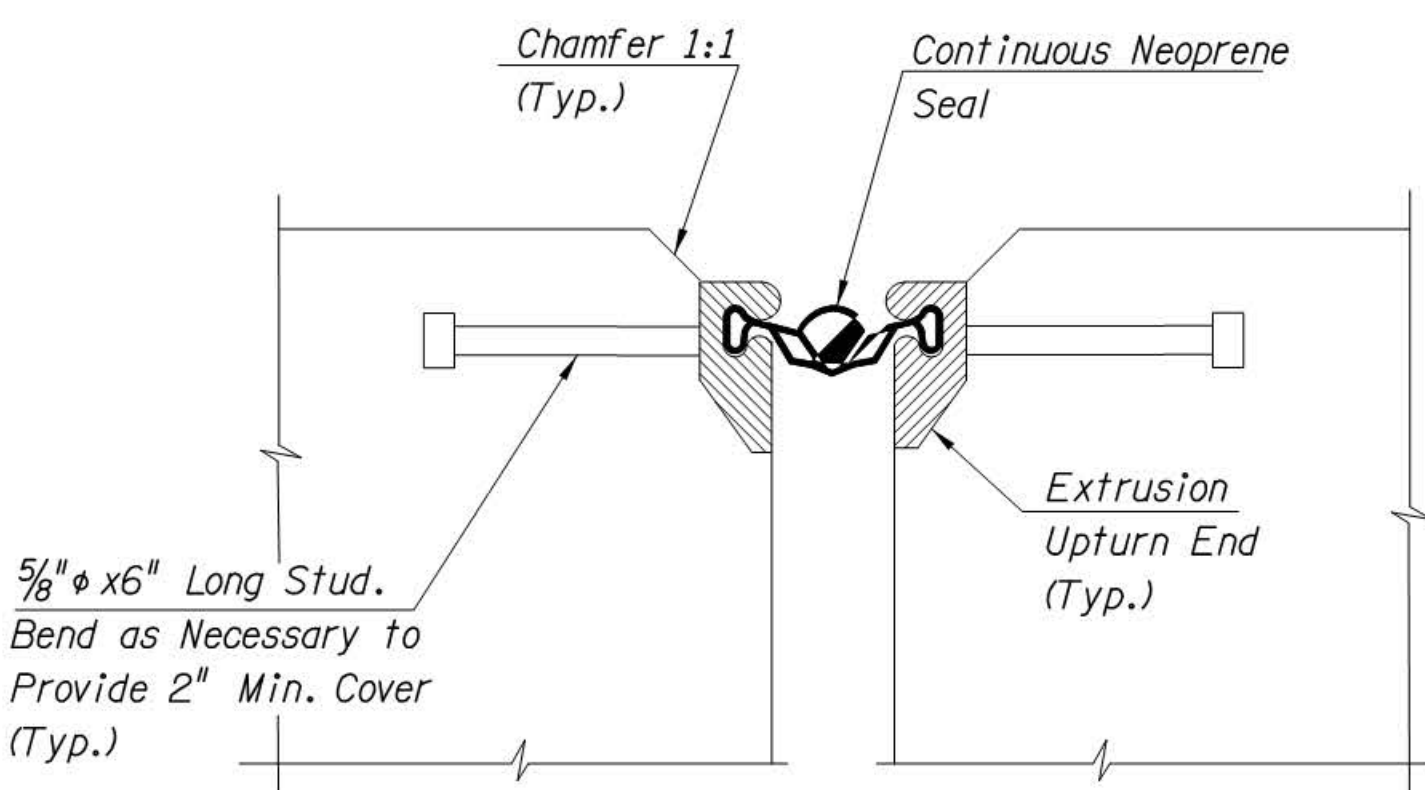
**PARTIAL PLAN AT ABUTMENT**  
N.T.S.



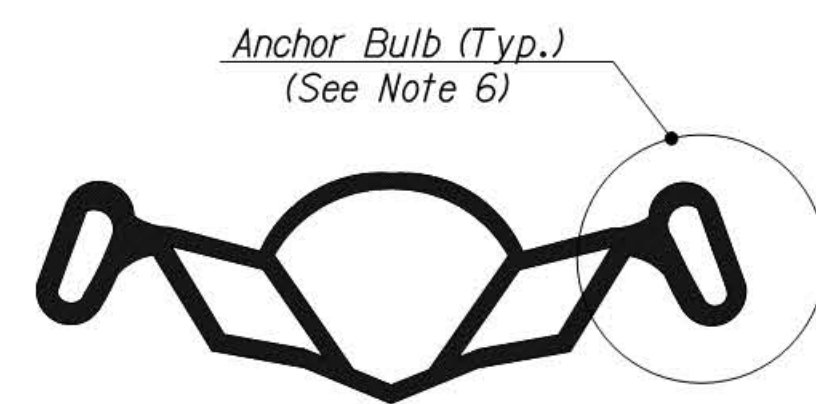
**PARTIAL PLAN AT PIER**  
N.T.S.



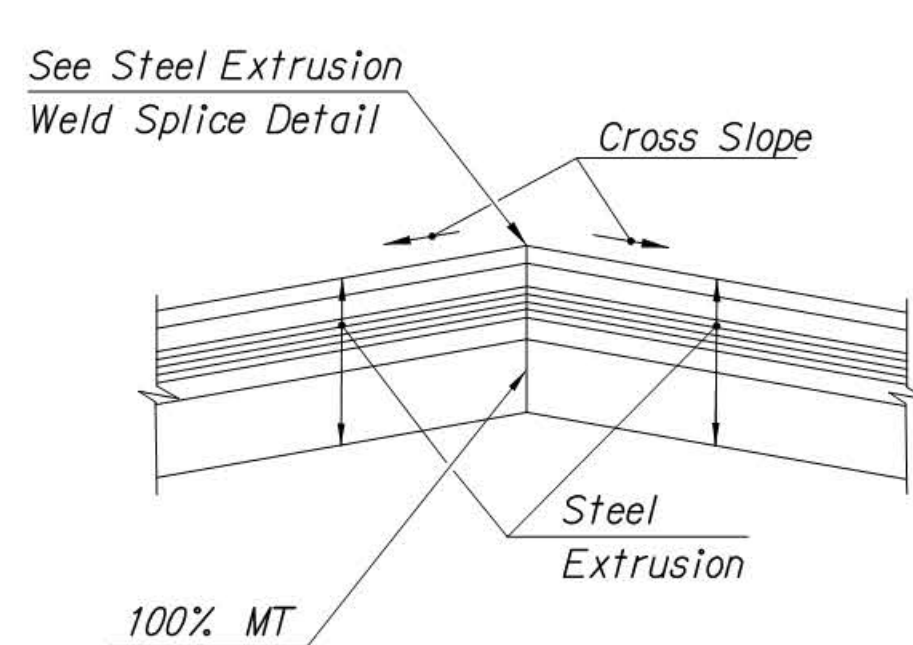
**SECTION A-A**  
N.T.S.



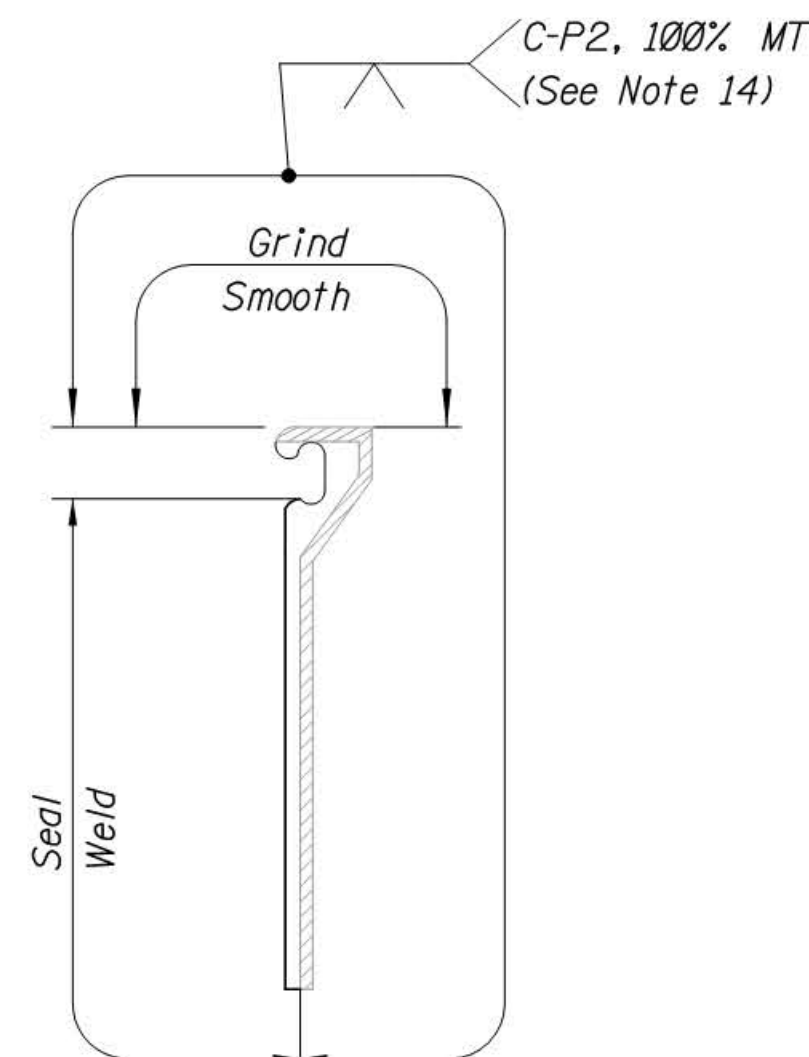
**SECTION B-B**  
N.T.S.



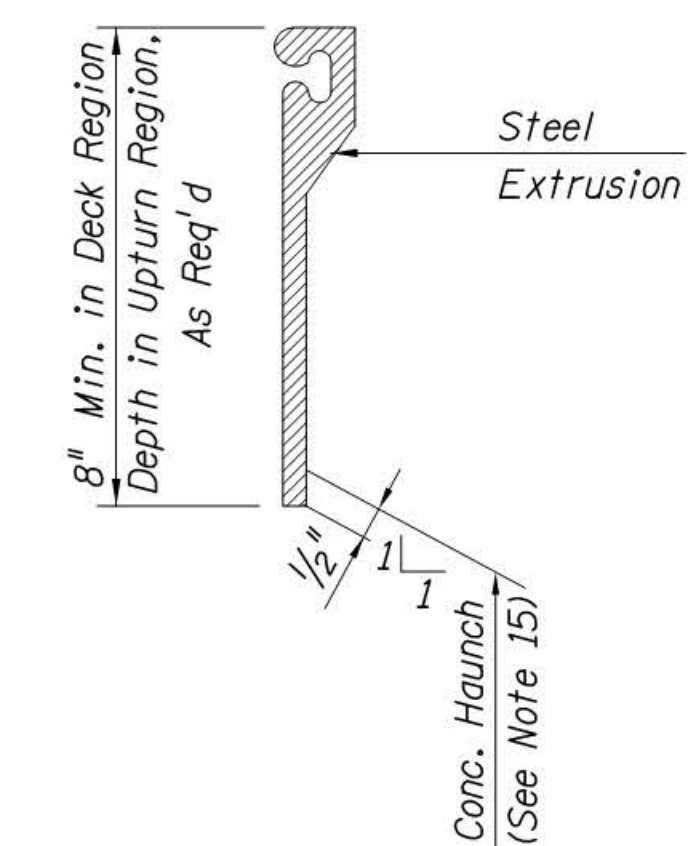
**STRIP SEAL GLAND DETAIL**  
N.T.S.



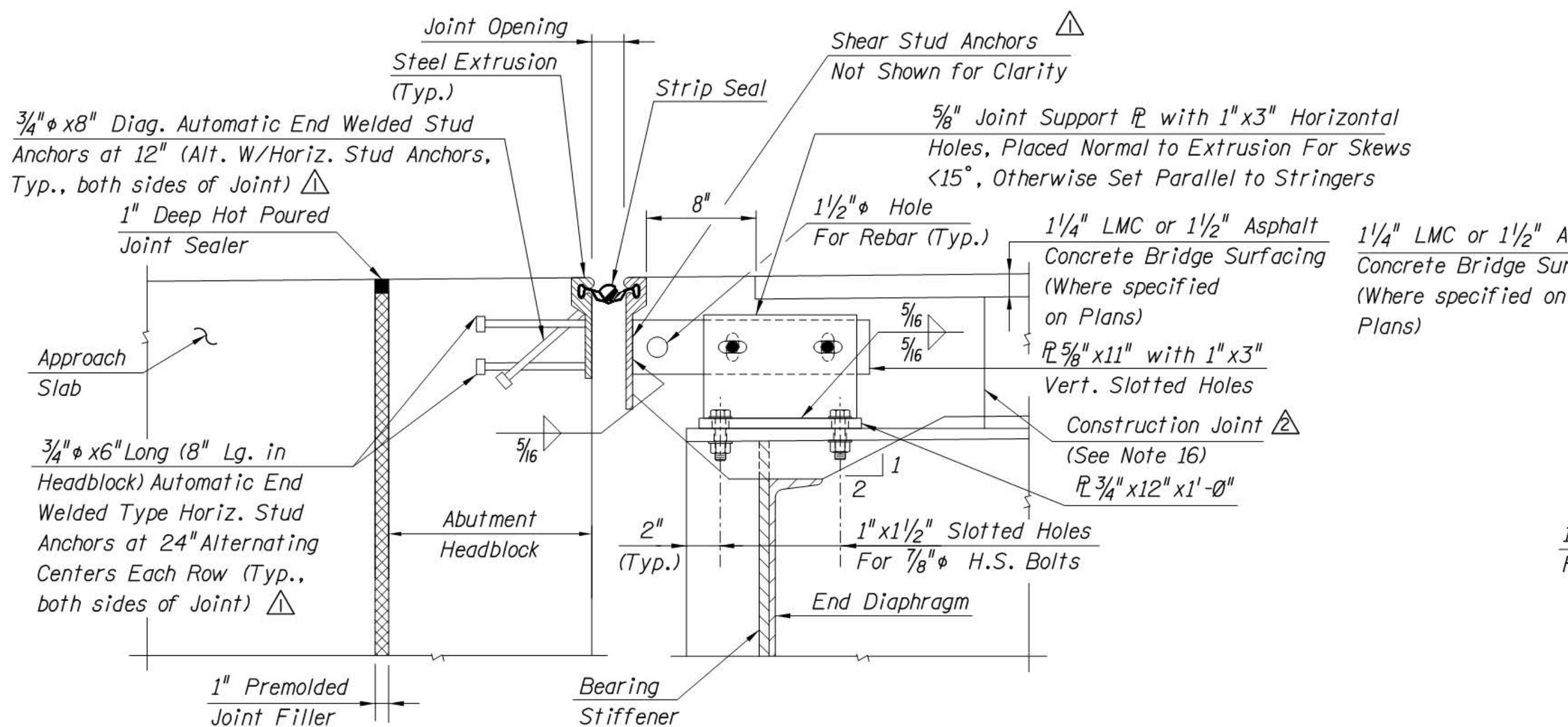
**SPLICE DETAIL FOR STEEL EXTRUSION**  
N.T.S.



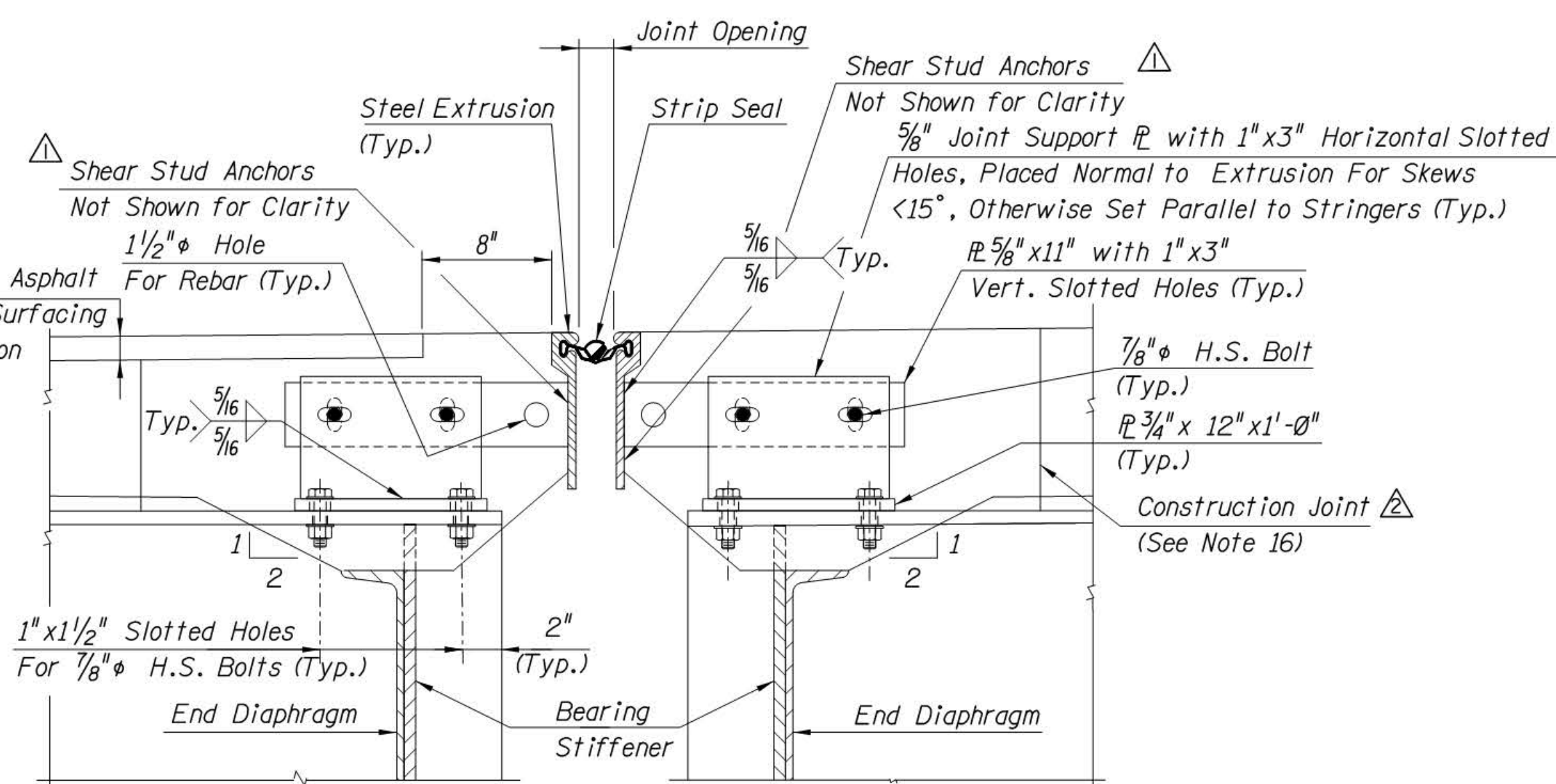
**STEEL EXTRUSION WELD SPLICE DETAIL**  
N.T.S.



**STRIP SEAL STEEL EXTRUSION**  
N.T.S.



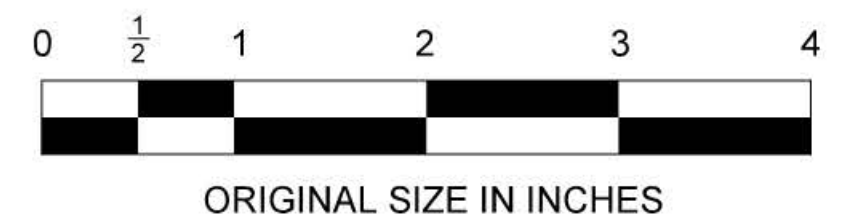
**ROADWAY SECTION C-C**  
N.T.S.



**ROADWAY SECTION D-D**  
N.T.S.

**NOTES:**

- Strip Seal Expansion Joints shall conform to Section 401.
- Steel extrusions shall be ASTM A709, Grade 36 or Grade 50W, and shall be hot dipped galvanized.
- Automatic end welded studs shall conform to AASHTO M169 (ASTM A108), Grades 1015, 1018 or 1020.
- Plates, shapes and other structural steel material used in the deck joint system shall be ASTM A709, Grade 50W, and shall be hot dipped galvanized.
- Field splices for steel extrusions shall be placed at grade breaks and longitudinal breaks in the deck. Field splices are only permitted for deck widenings or rehabilitations that require staged construction.
- The anchor bulbs shall be fully seated for the entire extrusion length.
- MT indicates Magnetic Particle Testing.
- Refer to Std. Drawing BR-14 for cover plate details at skewed deck joints.
- Minimum concrete cover for studs is 2".
- Close upturned end of cellular sealers with approved mastic or vulcanized flap.
- Apply methacrylate sealer conforming to Subsection 923.43 at interface between steel extrusion and concrete surface.
- Maximum movement rating (MR) allowed for strip seals is 4 inches. For MR greater than 4 inches, modular joints or other joint systems approved by the Authority will be required.
- Strip seal glands shall have a minimum 4" movement rating, regardless of design requirements and shall be of a self-cleaning type.
- Steel extrusion weld splices shall be, at a minimum, a partial penetration groove weld (PJP) conforming to the joint designation shown and as described in the AASHTO/AWS D1.5 Bridge Welding Code with current interims.
- Where practical, concrete deck haunch shall be sloped away from strip seal extrusion at a 1H:IV Ratio, as shown.
- This construction joint has been provided to accommodate deflections and rotations in the joint due to dead load camber change during deck concrete placement. The construction joint shall be provided at all deck joint locations. This construction joint may be omitted only at the express written consent of the Engineer. Work associated with the inclusion of the construction joint shall be considered incidental to the Concrete in Deck pay item. No additional payment will be made.



NEW JERSEY TURNPIKE AUTHORITY

**STRIP SEALS - I**

OFFICE OF THE CHIEF ENGINEER  
WOODBRIDGE, NEW JERSEY

2010 STANDARD  
DRAWING

**BR-13**

App.	No.	DATE	REVISION
	2	4/16	ADDED CONSTRUCTION JOINT
	1	9/10	ADD'L STUD NOTES ADDED
	0	7/10	REISSUED DRAWING

CONTRACT NO.

SHEET NO.

OF