

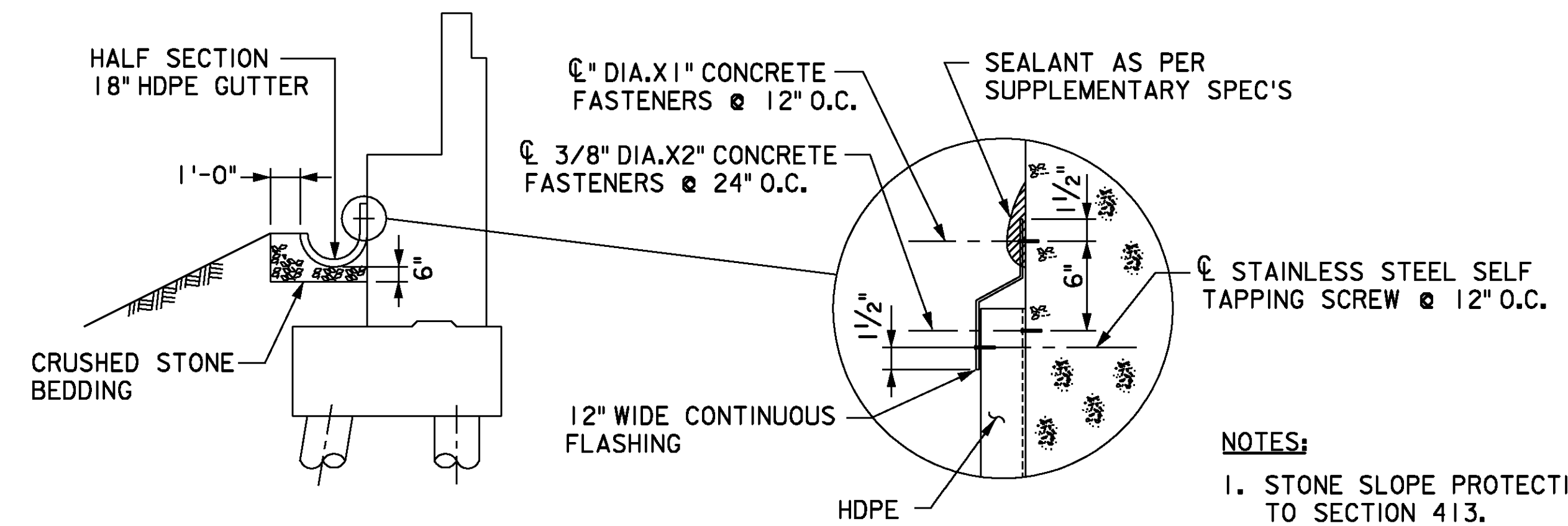
WHEN SKEW OF BRIDGE EXCEEDS 20°, STONE SLOPE PROTECTION AND BERM SURFACING SHALL EXTEND TO THIS LINE

NOTE:

FOR ELEVATIONS OF POINTS "A", "B", "C" AND "D", SEE GENERAL PLAN AND ELEVATION SHEET.

TYPICAL SLOPE PLAN

1/8" = 1'-0"

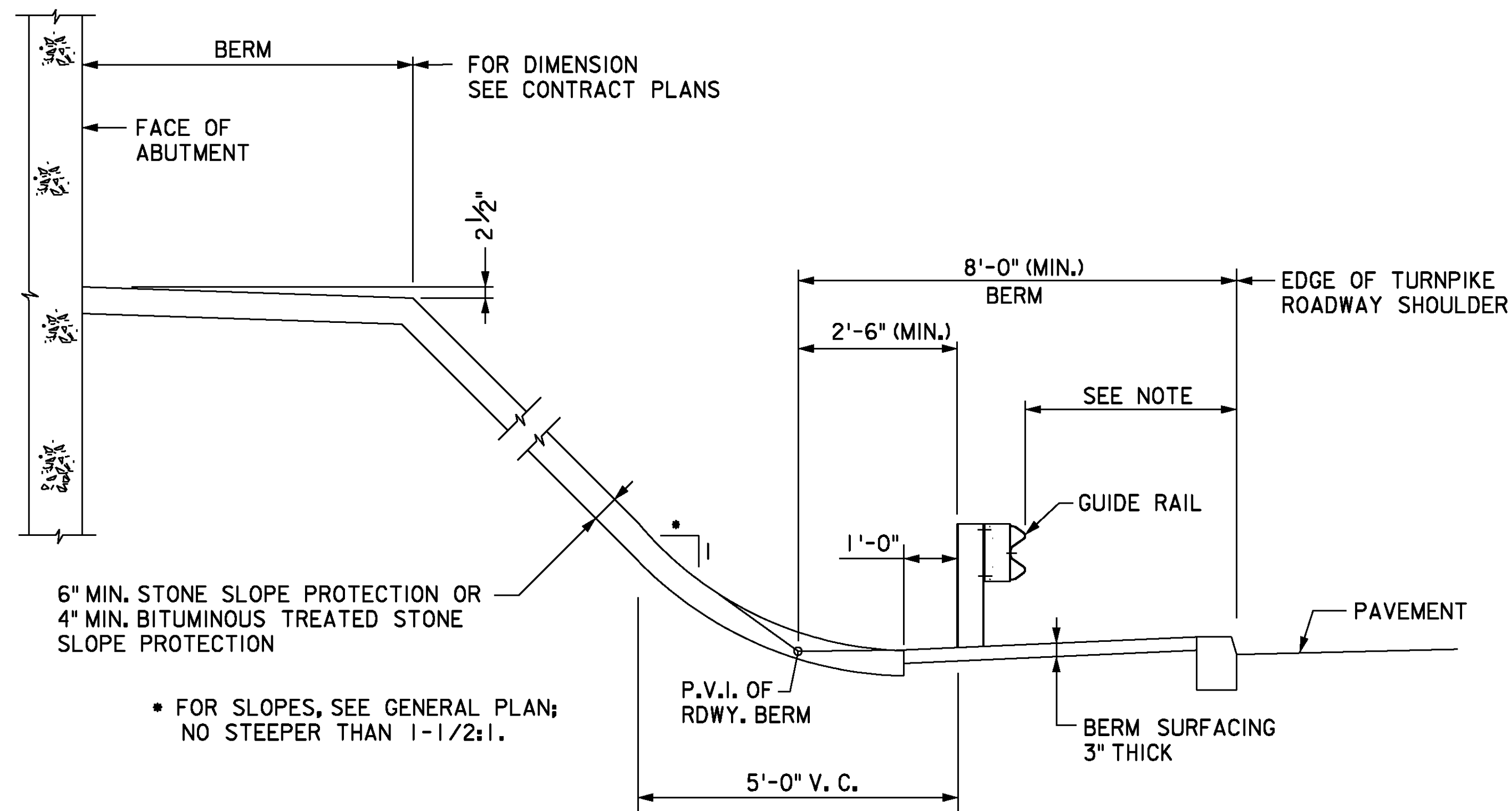


NOTES:

1. STONE SLOPE PROTECTION SHALL CONFORM TO SECTION 413.
2. POWER DRIVEN FASTENERS MAY BE USED. IF POWER DRIVING RESULTS IN CRACKING OF THE ABUTMENT FACE, EXPANSION TYPE FASTENERS WILL BE REQUIRED.
3. UPPER AND LOWER FASTENERS SHALL BE STAGGERED 6" HORIZONTALLY.

**TYPICAL SECTION
18" HDPE ABUTMENT TROUGH**

1/4" = 1'-0"



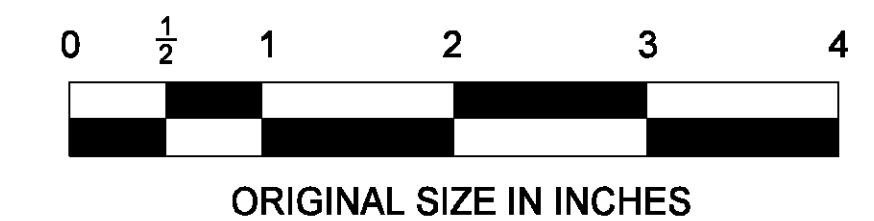
* FOR SLOPES, SEE GENERAL PLAN; NO STEEPER THAN 1-1/2:1.

NOTE:

DESIRABLE GUIDE RAIL OFFSET IS 7'-0". IF A 7'-0" OFFSET IS NOT ATTAINABLE, SET GUIDE RAIL FLUSH WITH THE FACE OF CURB.

TYPICAL SECTION

1/2" = 1'-0"



NEW JERSEY TURNPIKE AUTHORITY

STONE SLOPE PROTECTION

OFFICE OF THE CHIEF ENGINEER

2009 STANDARD
DRAWING

BR-8

App.	No.	DATE	REVISION
		04/09	ORIGINAL DRAWING

CONTRACT NO.

SHEET NO.

OF