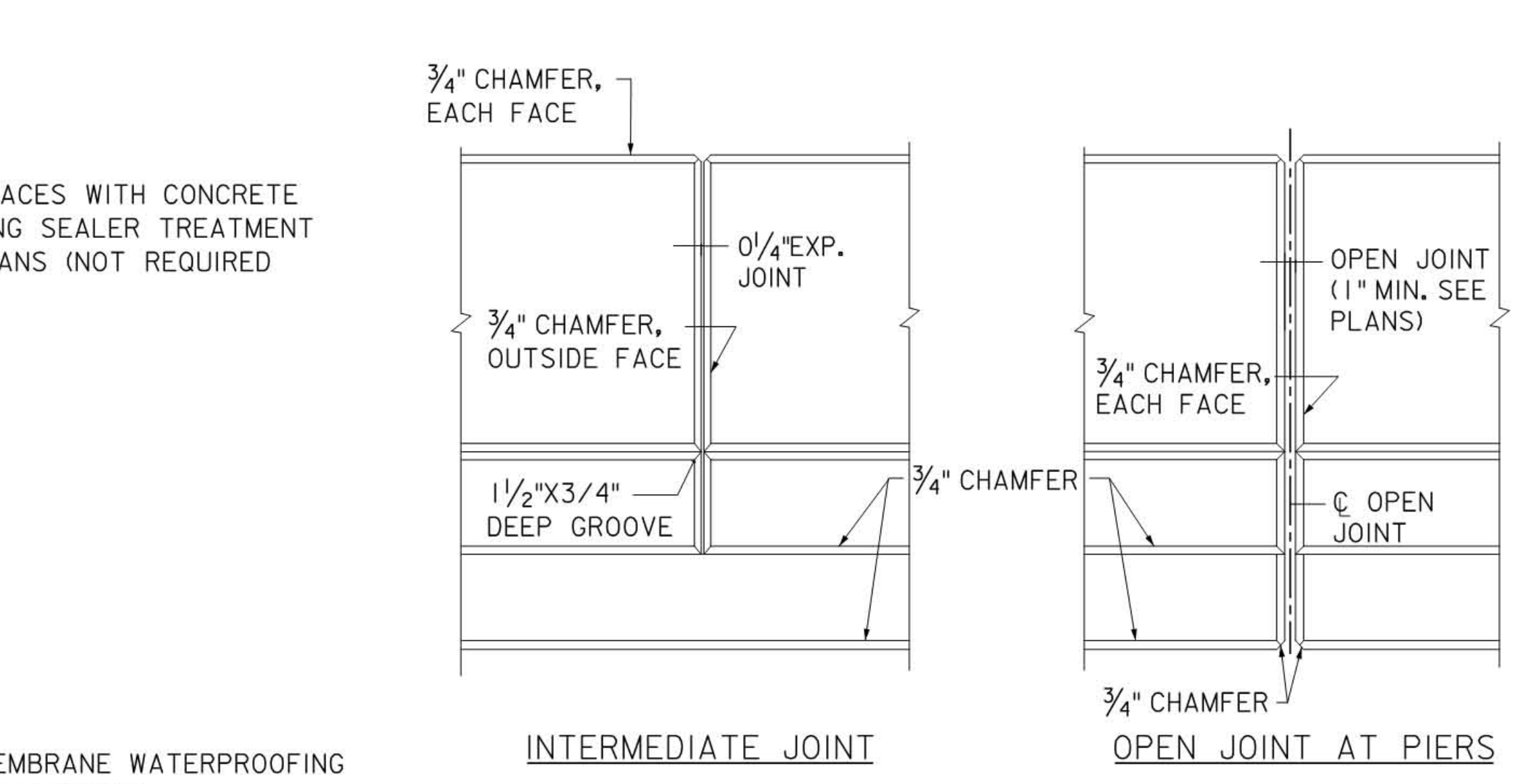
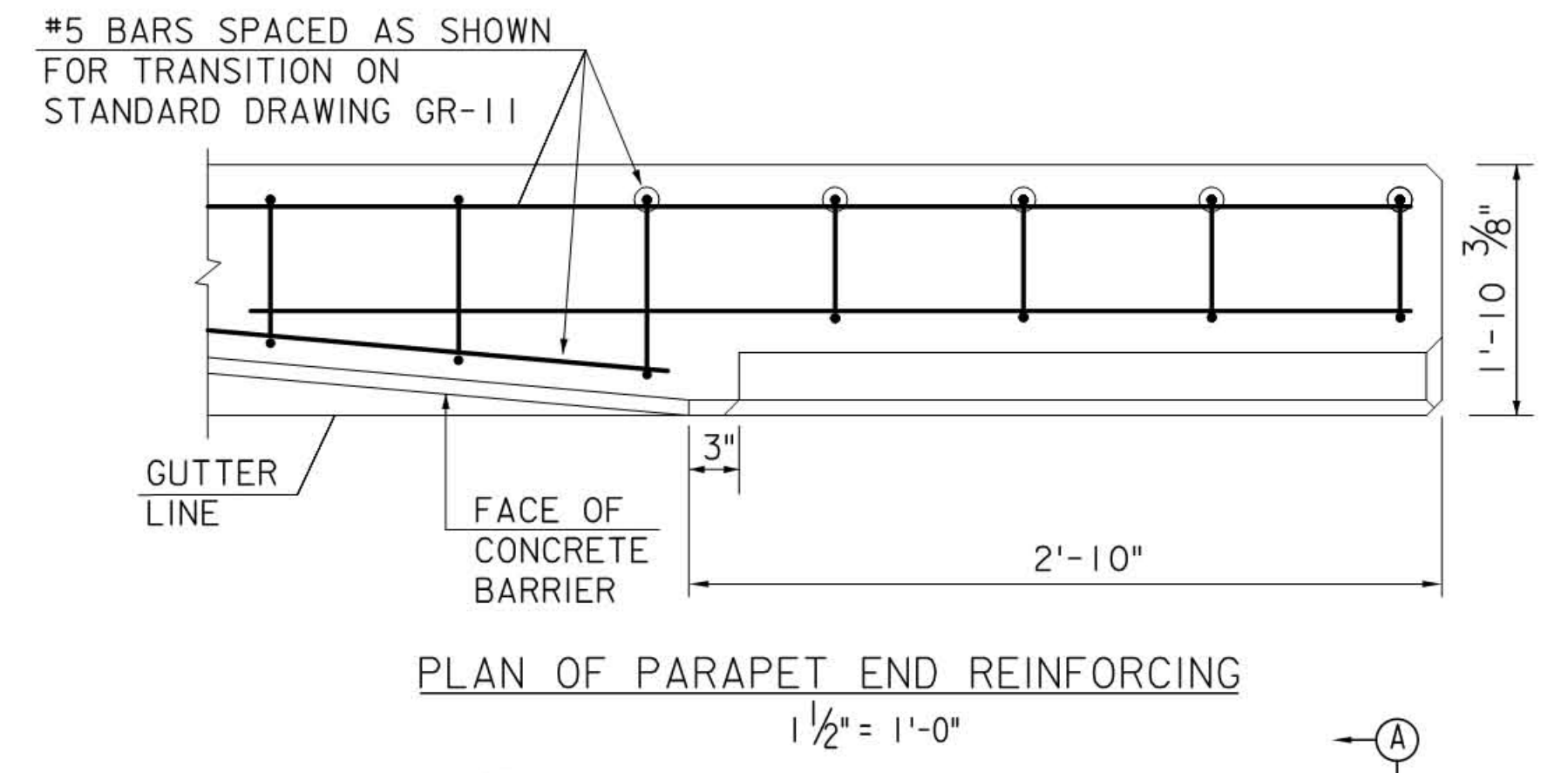


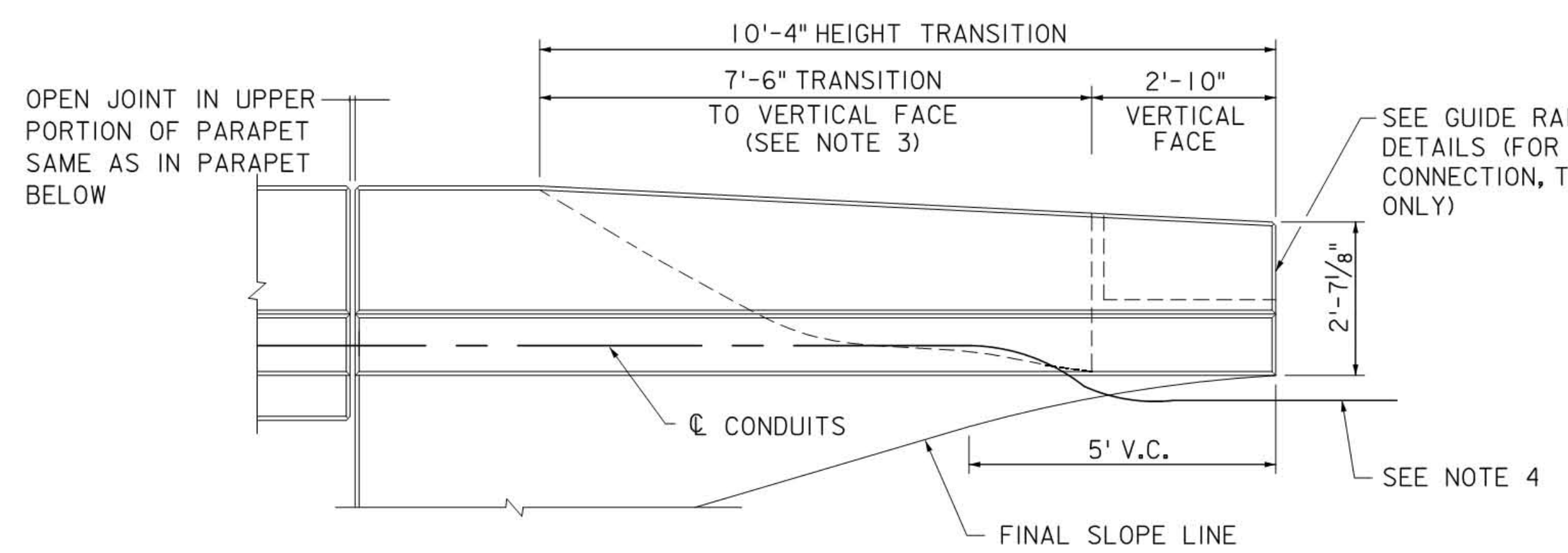
TYPICAL SECTION
1/2" = 1'-0"



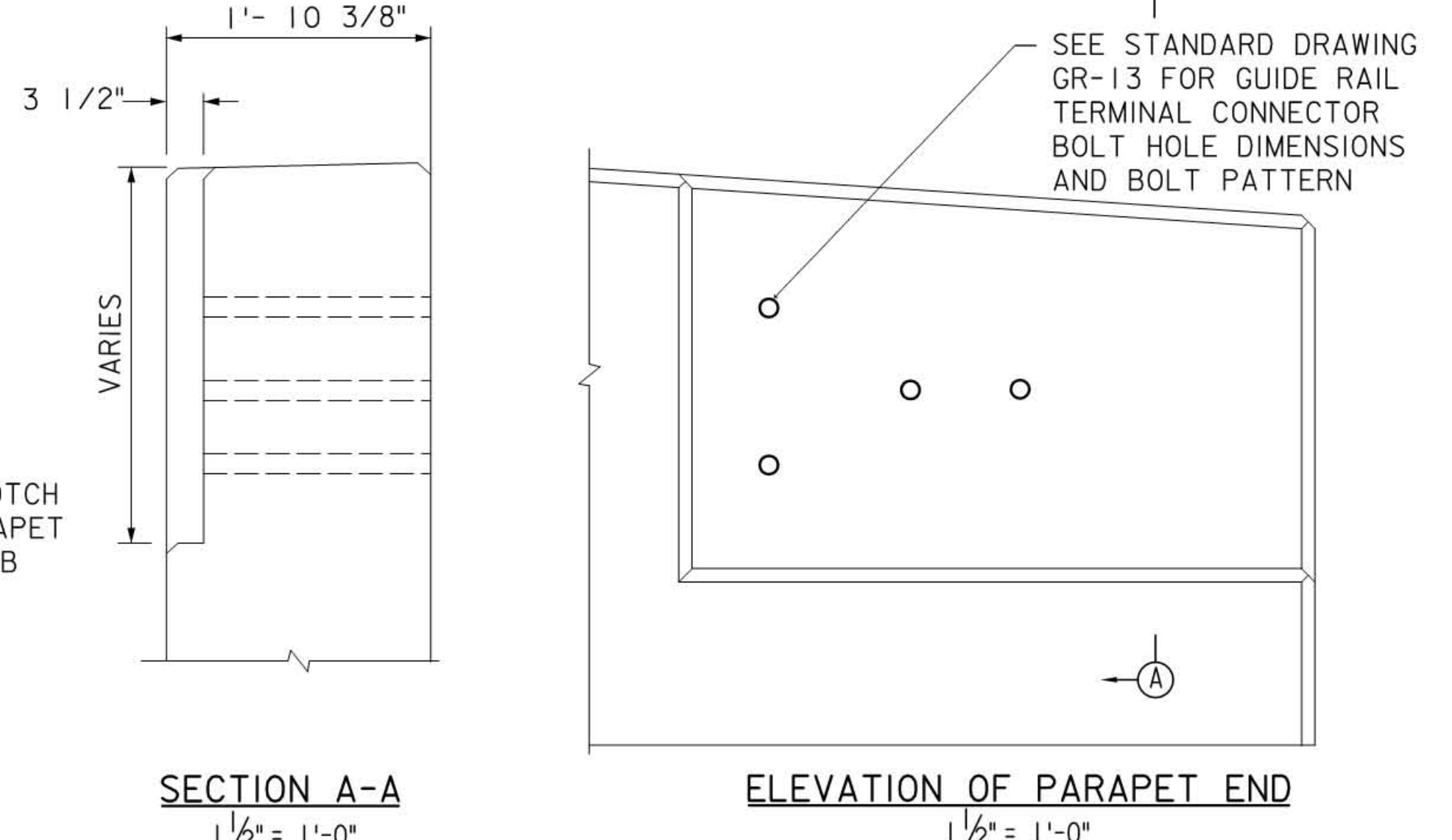
PARAPET DETAILS
1" = 1'-0"



PLAN OF PARAPET END REINFORCING
1/2" = 1'-0"



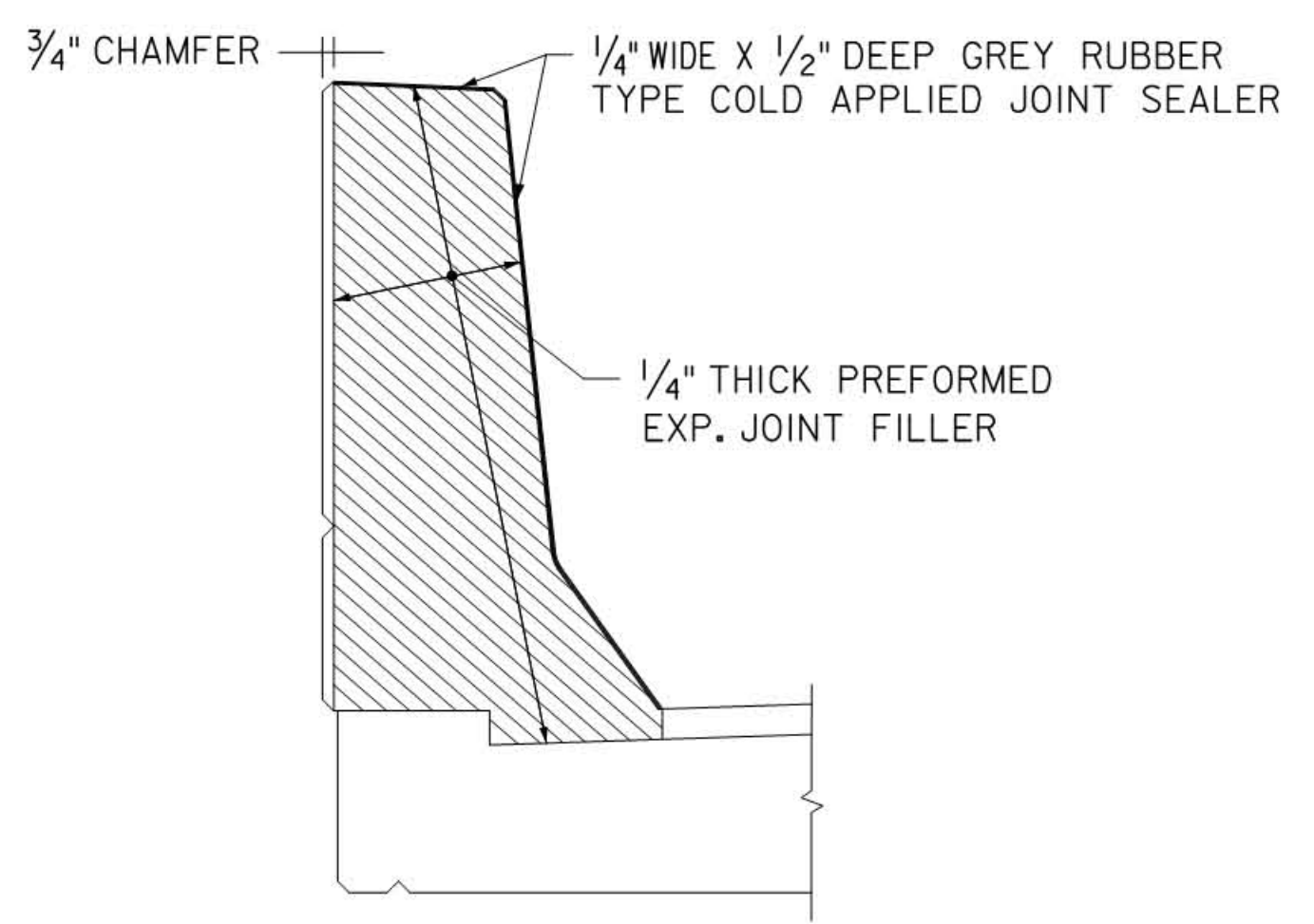
ELEVATION - TYPICAL ABUTMENT WINGWALL
1/2" = 1'-0"



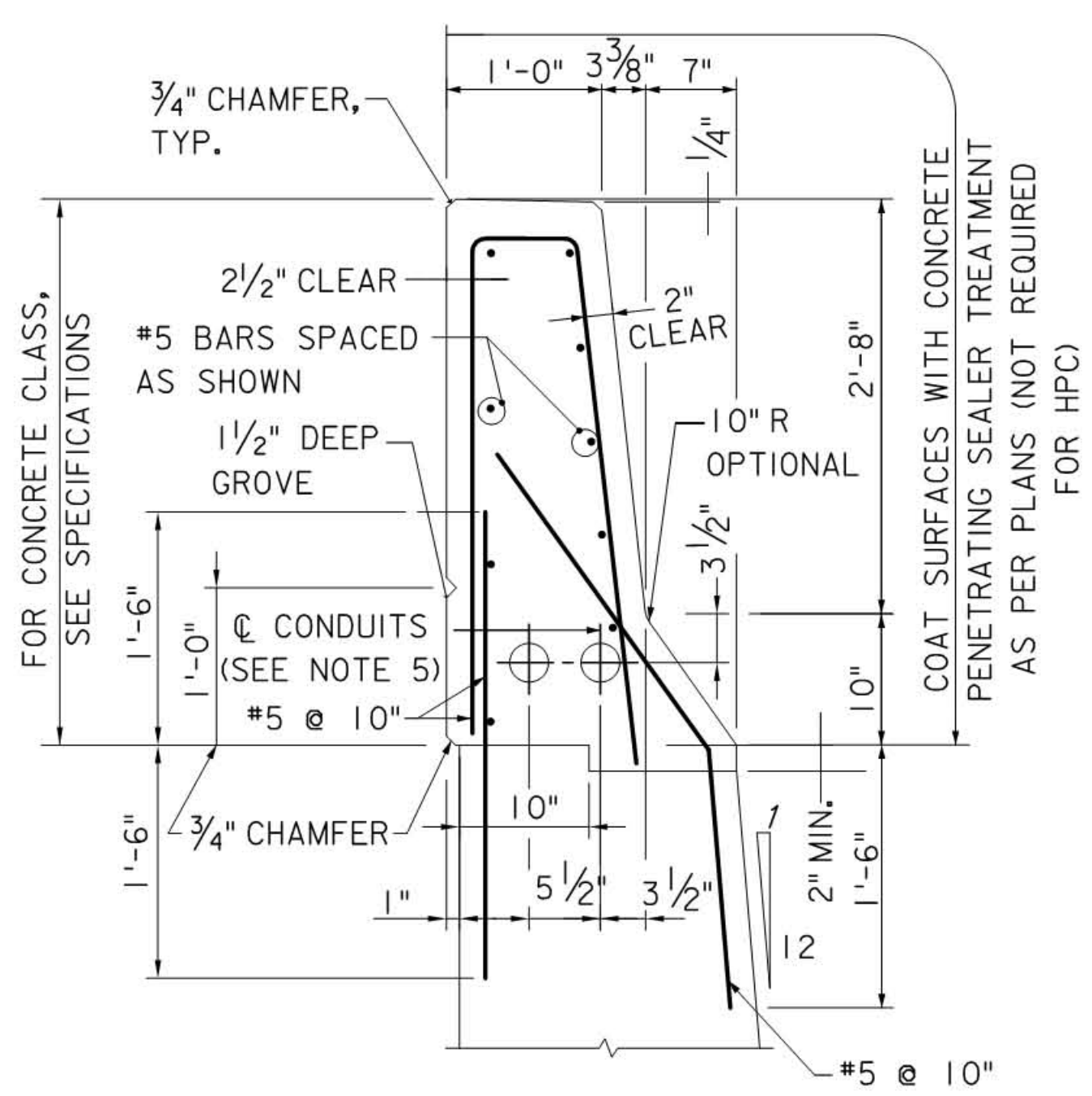
SECTION A-A
1/2" = 1'-0"

ELEVATION OF PARAPET END
1/2" = 1'-0"

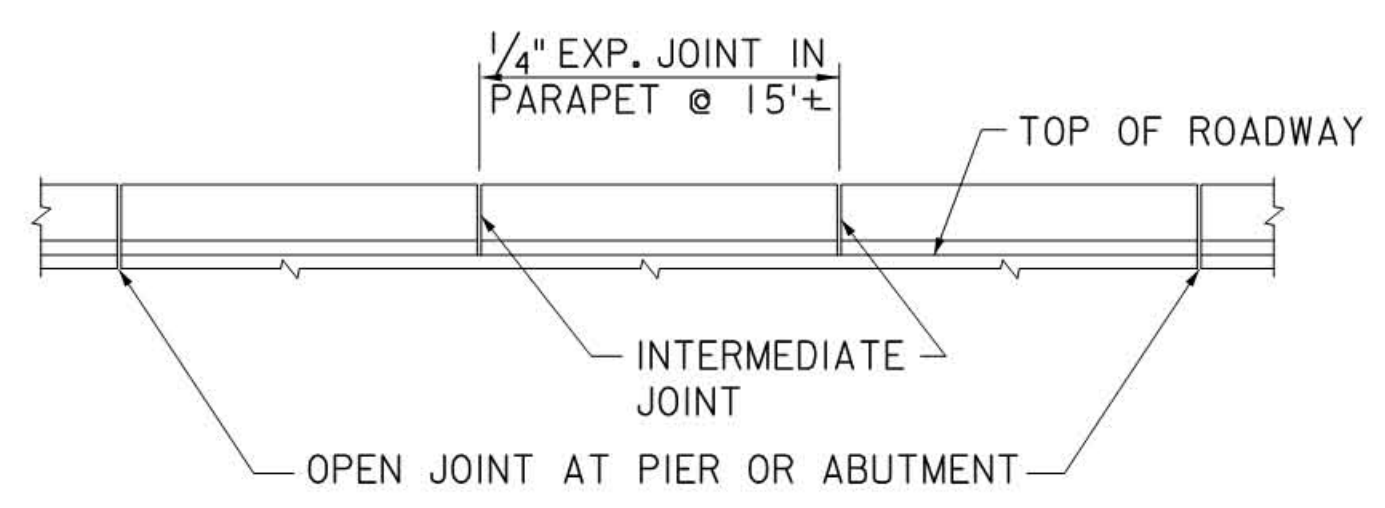
GUIDE RAIL NOTCH DETAILS
(FOR PARAPET CONNECTION, TYPE B ONLY)



SECTION AT INTERMEDIATE JOINT
1" = 1'-0"

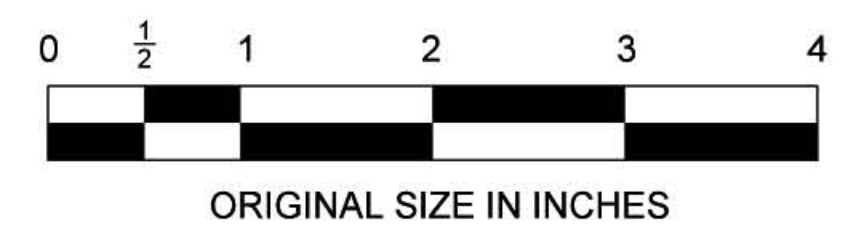


TYPICAL SECTION AT WINGWALL
1" = 1'-0"



NOTES:

1. ALL REINFORCEMENT STEEL IN BARRIER PARAPETS ON BRIDGES, WINGWALLS AND RETAINING WALLS SHALL BE EPOXY COATED.
2. JOINTS SHALL BE NORMAL TO GRADE.
3. GUIDE RAIL PARAPET CONNECTION, TYPE B TRANSITION SHOWN, TYPE A SIMILAR. SEE STANDARD DRAWING GR-11 FOR COMPLETE BARRIER PARAPET TRANSITION DETAILS.
4. CONDUITS TO EXIT WINGWALL END BELOW GRADE. FOR MORE DETAILS, SEE STANDARD DRAWING E-24.
5. CONDUIT LOCATIONS IN PARAPET ARE SUGGESTED, ACTUAL LOCATIONS AS SHOWN ON THE CONTRACT PLANS.



App.	No.	DATE	REVISION
3	5/14		REVISED GIRDER HAUNCH
2	11/11		REVISED PARAPET TRANSITION & NOTES
1	09/09		REVISED DRAWING
0	04/09		ORIGINAL DRAWING

NEW JERSEY TURNPIKE AUTHORITY

BARRIER PARAPET DETAILS

OFFICE OF THE CHIEF ENGINEER

2009 STANDARD DRAWING

BR-7