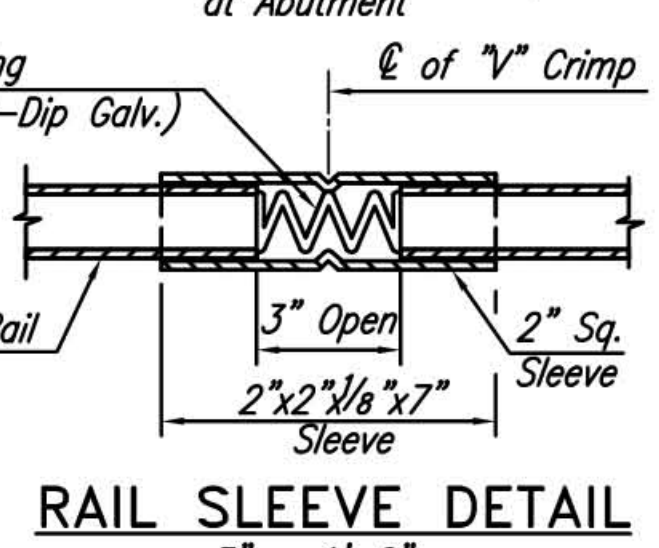
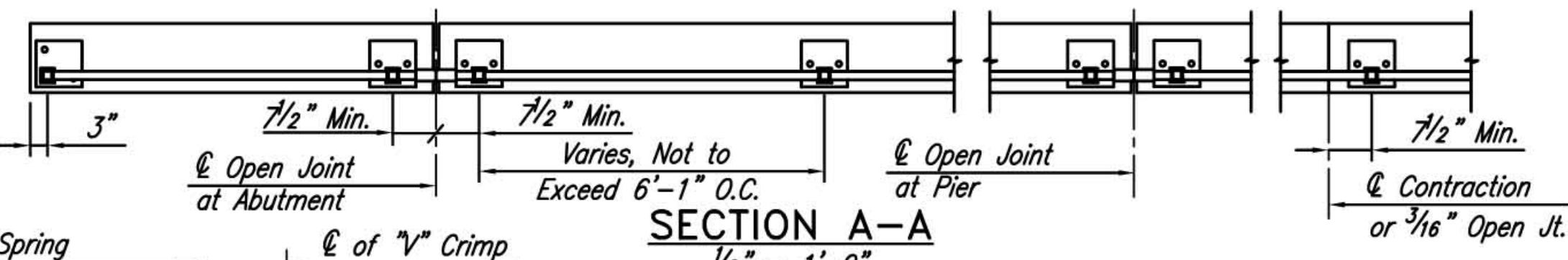
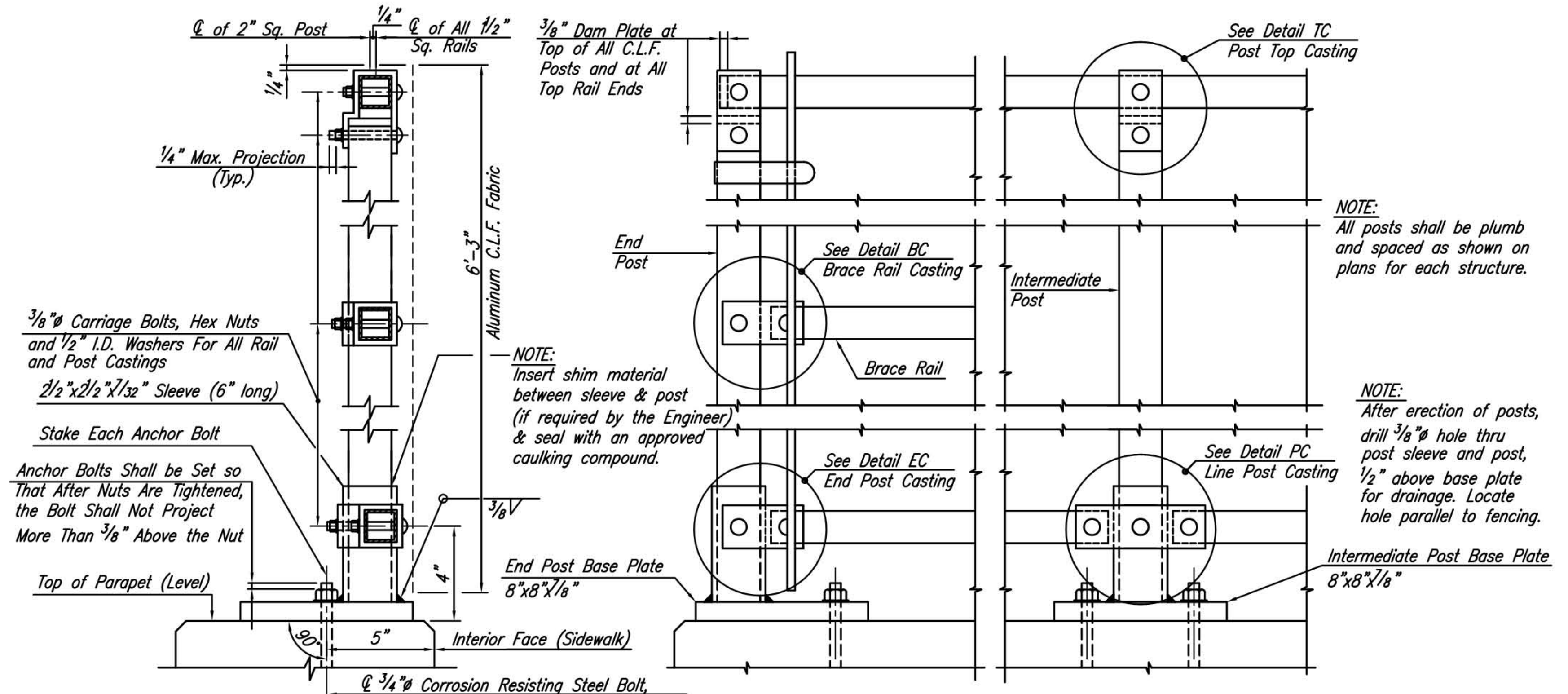


- NOTES:**
1. Brace rails shall be installed at end units where C.L.F. fabric is tensioned.
 2. C.L.F. fabric shall be continuous across all joints.
 3. For details of C.L.F. fabric, see Standard Dwg. BF-3.

INTERIOR ELEVATION - PARAPET & CHAIN LINK FENCE
1/2" = 1'-0"



RAIL SLEEVE DETAIL
3" = 1'-0"

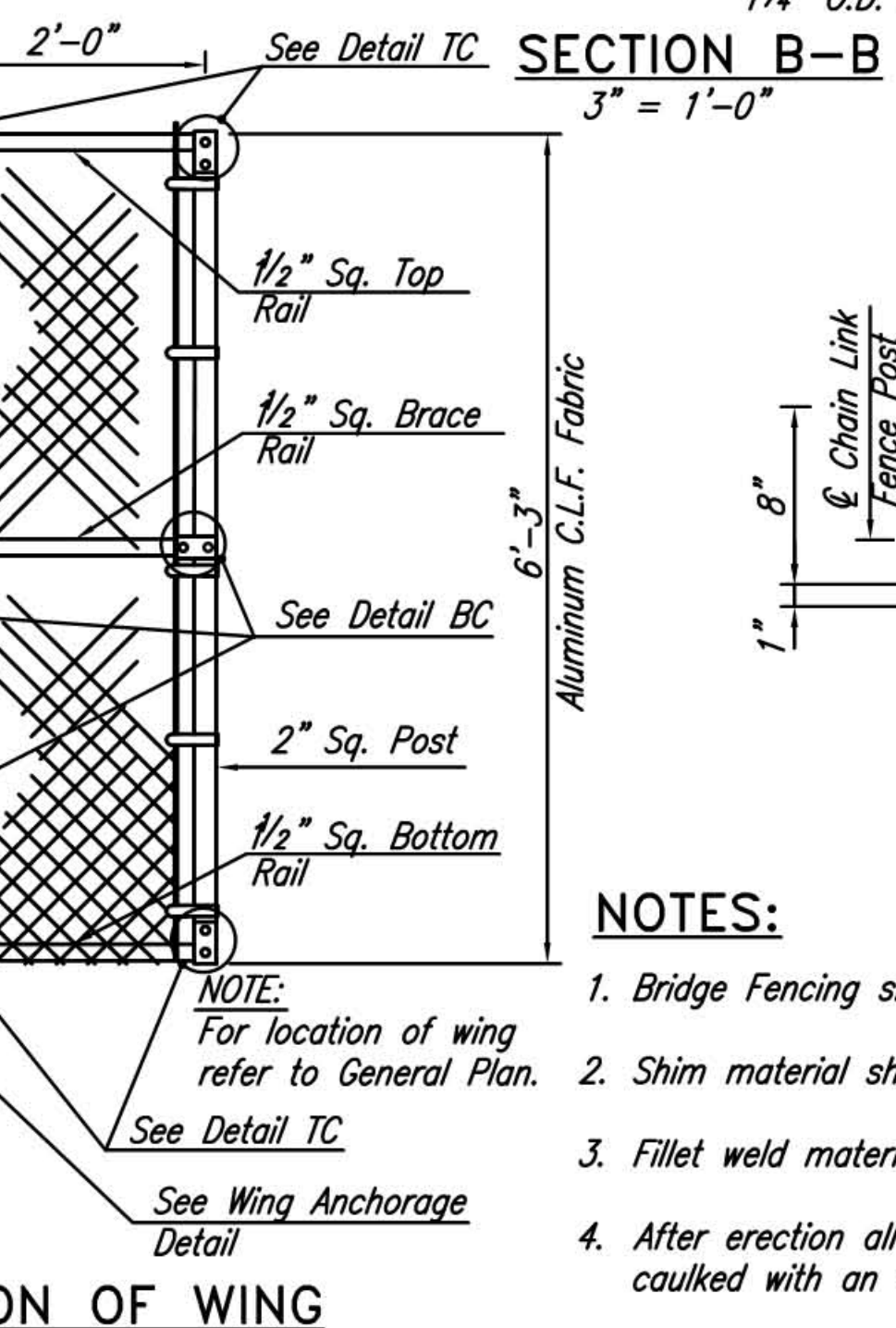


- NOTE:**
Anchor Bolts Shall be Set so That After Nuts are Tightened, the Bolt Shall Not Project More Than 3/8" Above the Nut

NOTE:
All posts shall be plumb and spaced as shown on plans for each structure.

NOTE:
After erection of posts, drill 3/8" hole thru post sleeve and post, 1/2" above base plate for drainage. Locate hole parallel to fencing.

PART INTERIOR ELEVATION OF CHAIN LINK FENCE
(C.L.F. Fabric Not Shown For Clarity)
3" = 1'-0"



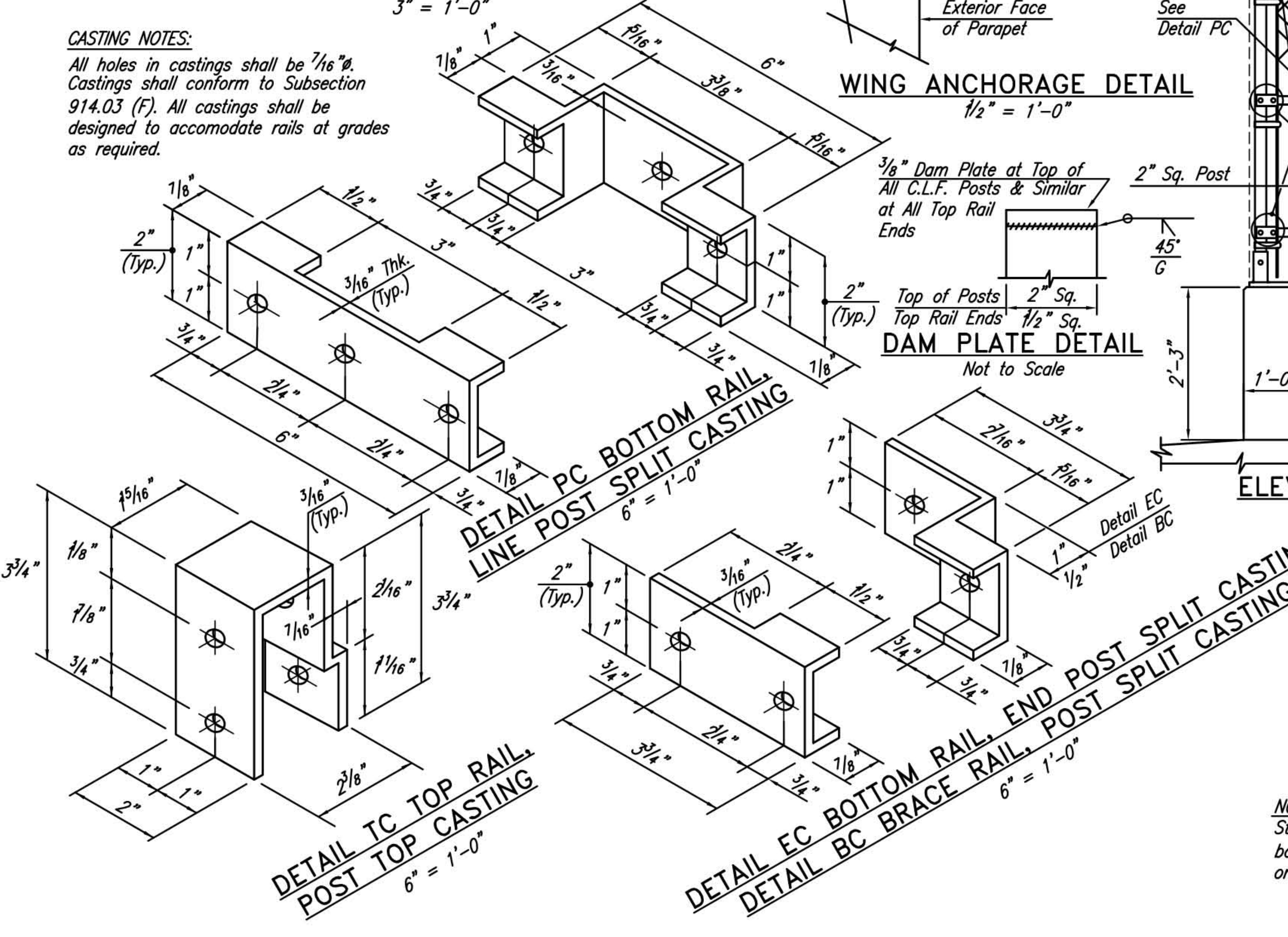
ELEVATION OF WING
3/4" = 1'-0"

SECTION B-B
3" = 1'-0"

NOTES:

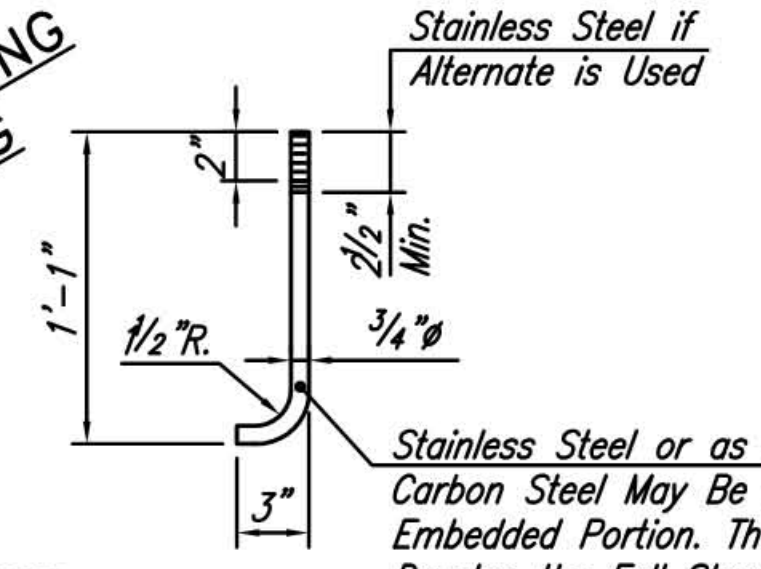
1. Bridge Fencing shall conform to Section 511.
2. Shim material shall be used where necessary for post alignment and shall conform to Subsection 911.01.
3. Fillet weld material shall conform to Subsection 911.01.
4. After erection all anchor bolt holes and space between base plates and concrete shall be thoroughly caulked with an aluminum impregnated caulking compound conforming to Subsection 923.05.
5. The Contractor shall verify all dimensions & conditions in the field.

CASTING NOTES:
All holes in castings shall be 7/16" Ø. Castings shall conform to Subsection 914.03 (F). All castings shall be designed to accommodate rails at grades as required.

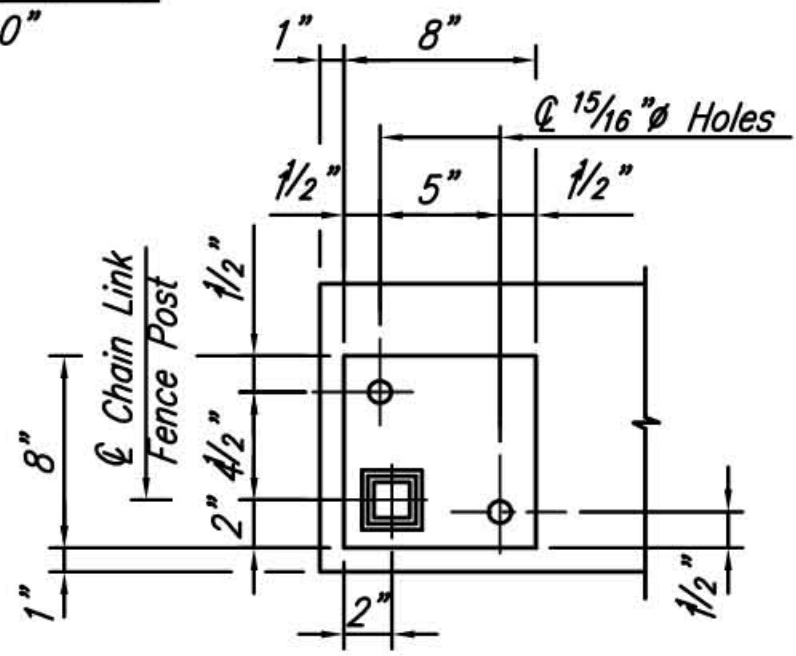


WING ANCHORAGE DETAIL
1/2" = 1'-0"

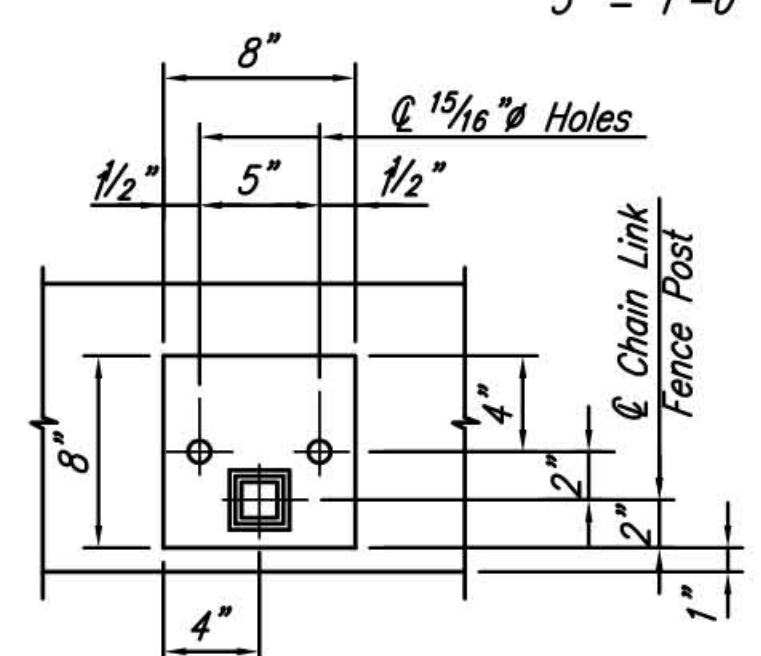
DAM PLATE DETAIL
Not to Scale



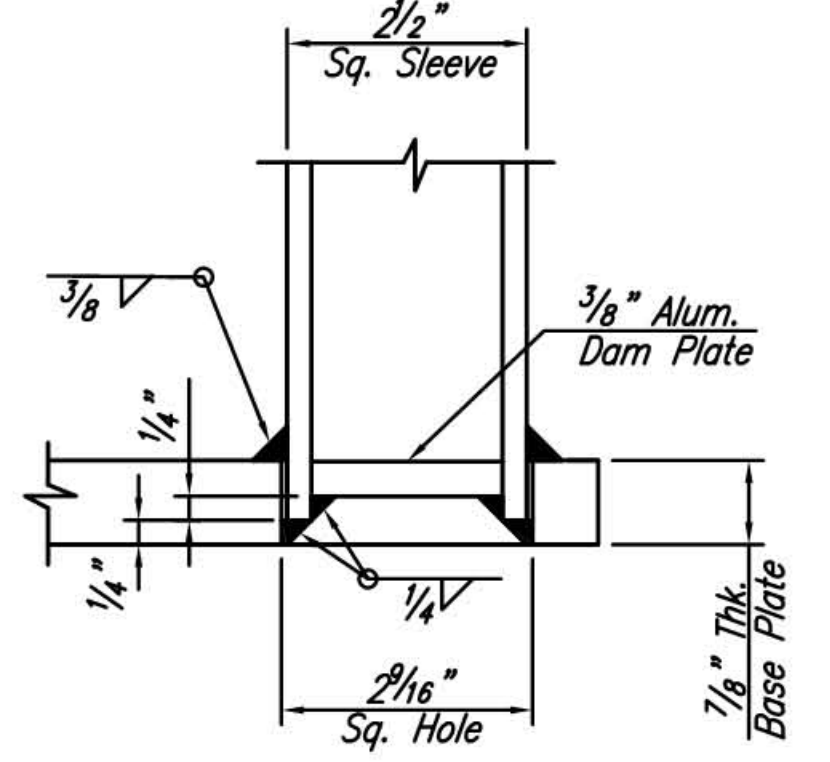
ANCHOR BOLT DETAIL
Not to Scale



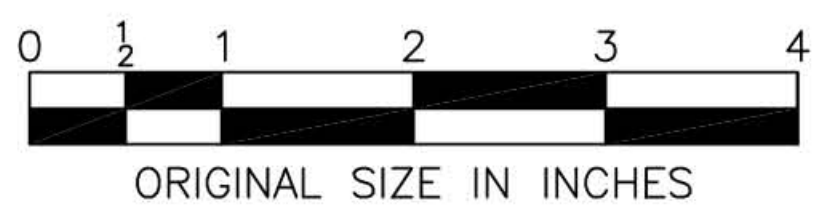
END POST BASE PLATE
1/2" = 1'-0"



INTERMEDIATE POST BASE PLATE
1/2" = 1'-0"



DETAIL OF SLEEVE ATTACHMENT
6" = 1'-0"



THIS DRAWING FOR REFERENCE ONLY
THIS DRAWING MAY ONLY BE USED FOR REPAIR OF EXISTING AUTHORITY BRIDGE FENCING. NEW OR COMPLETE REPLACEMENT BRIDGE FENCING SHALL CONFORM TO THE REQUIREMENTS OF THE OWNER/ OPERATOR OF THE ROADWAY CARRIED BY THE BRIDGE, PER DIVISION 500 OF THE SPECIFICATIONS

App.	No.	DATE	REVISION
	1	5/14	NOTE ADDED
	2	05	REISSUED; CONFORMS TO 2004 SPECS

NEW JERSEY TURNPIKE AUTHORITY
NEW JERSEY TURNPIKE

BRIDGE FENCING
6'-3" HIGH

OFFICE OF THE CHIEF ENGINEER
WOODBIDGE, NEW JERSEY

2004 STANDARD DRAWING
BF-4