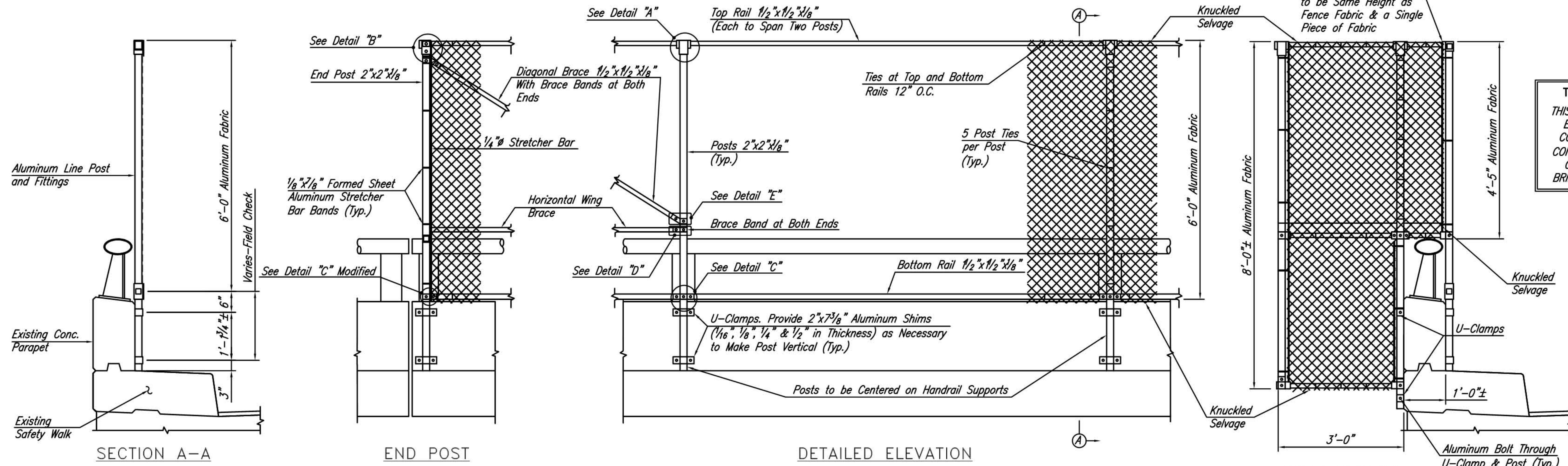
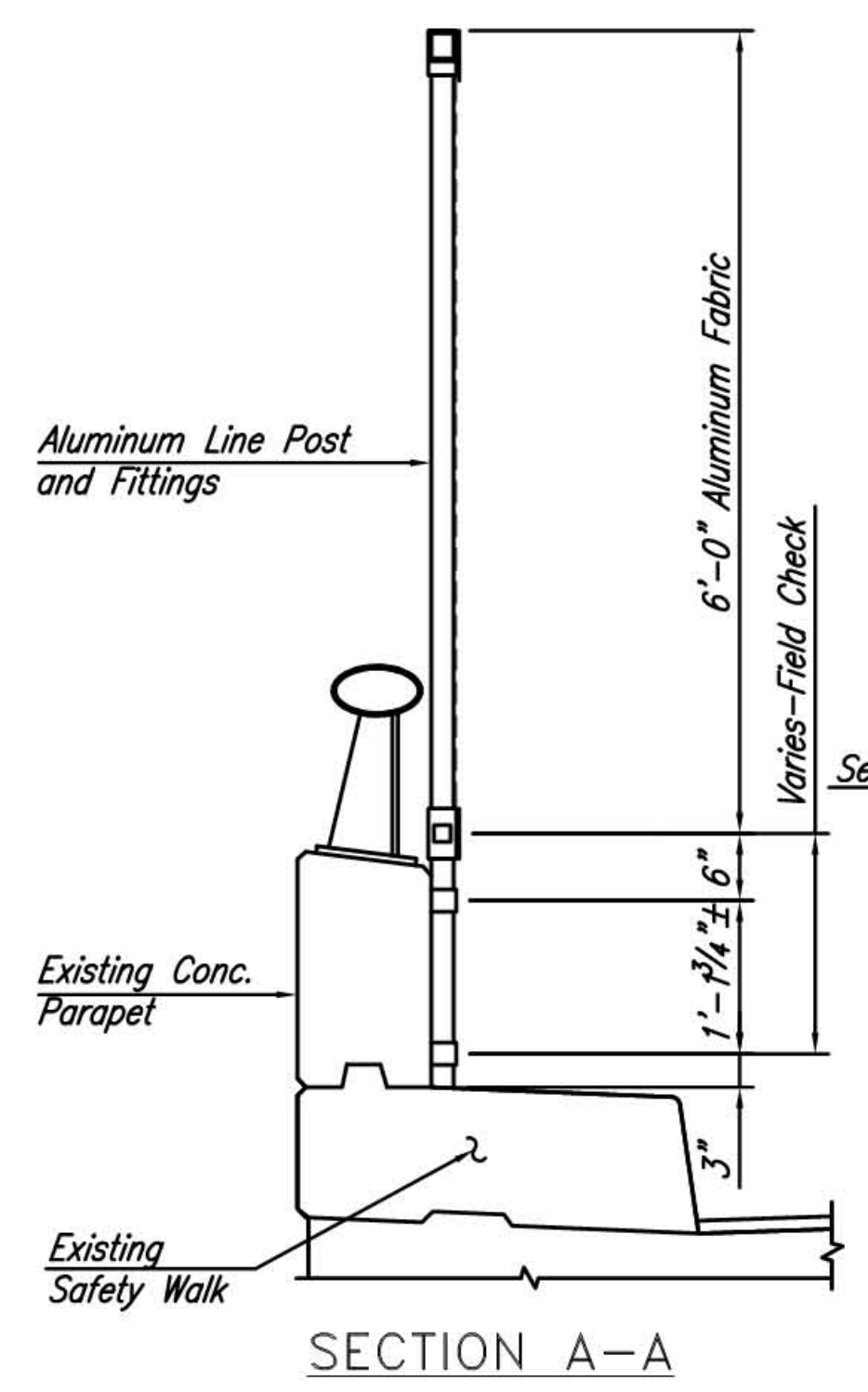


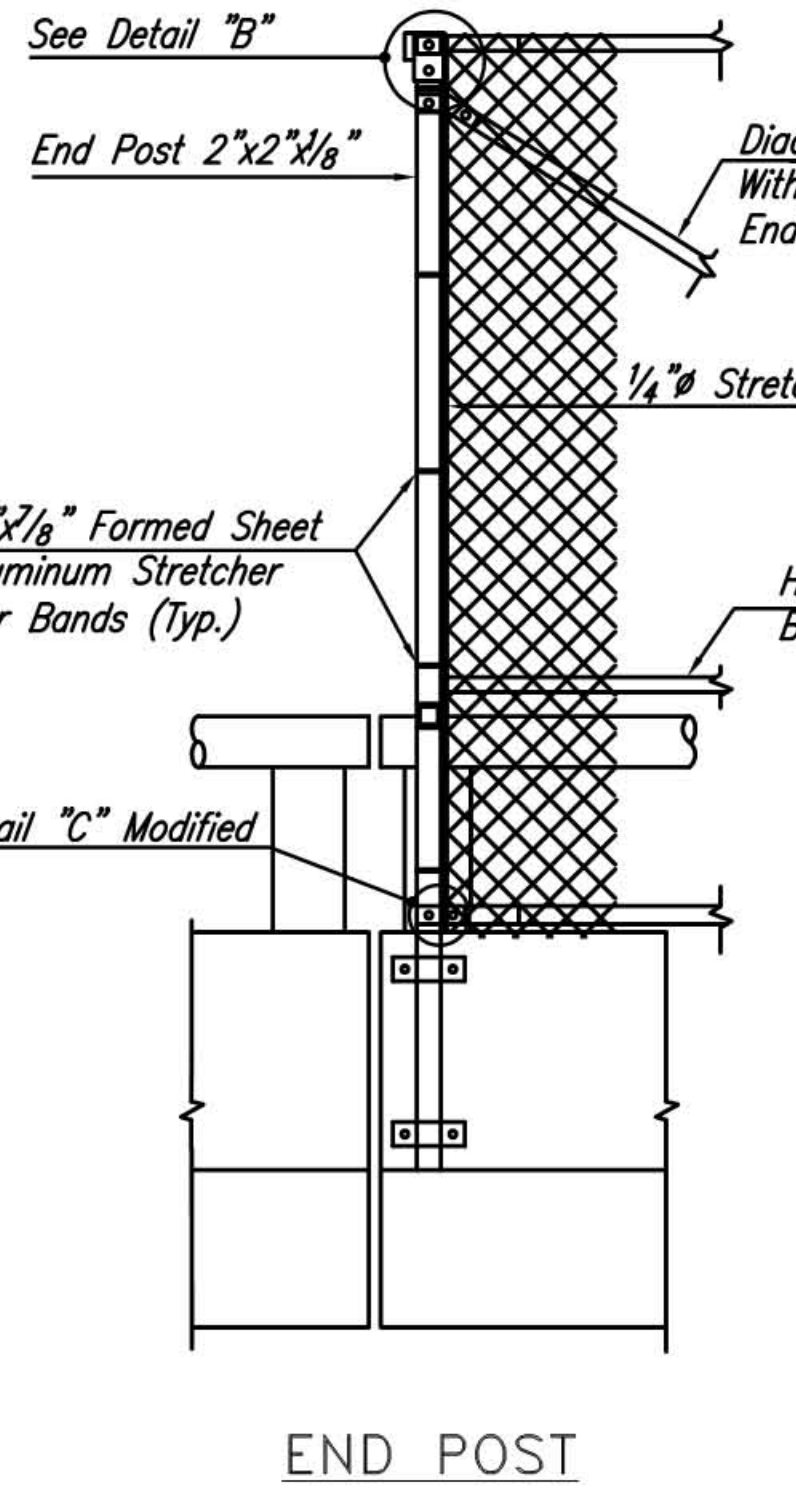
TYPICAL ELEVATION



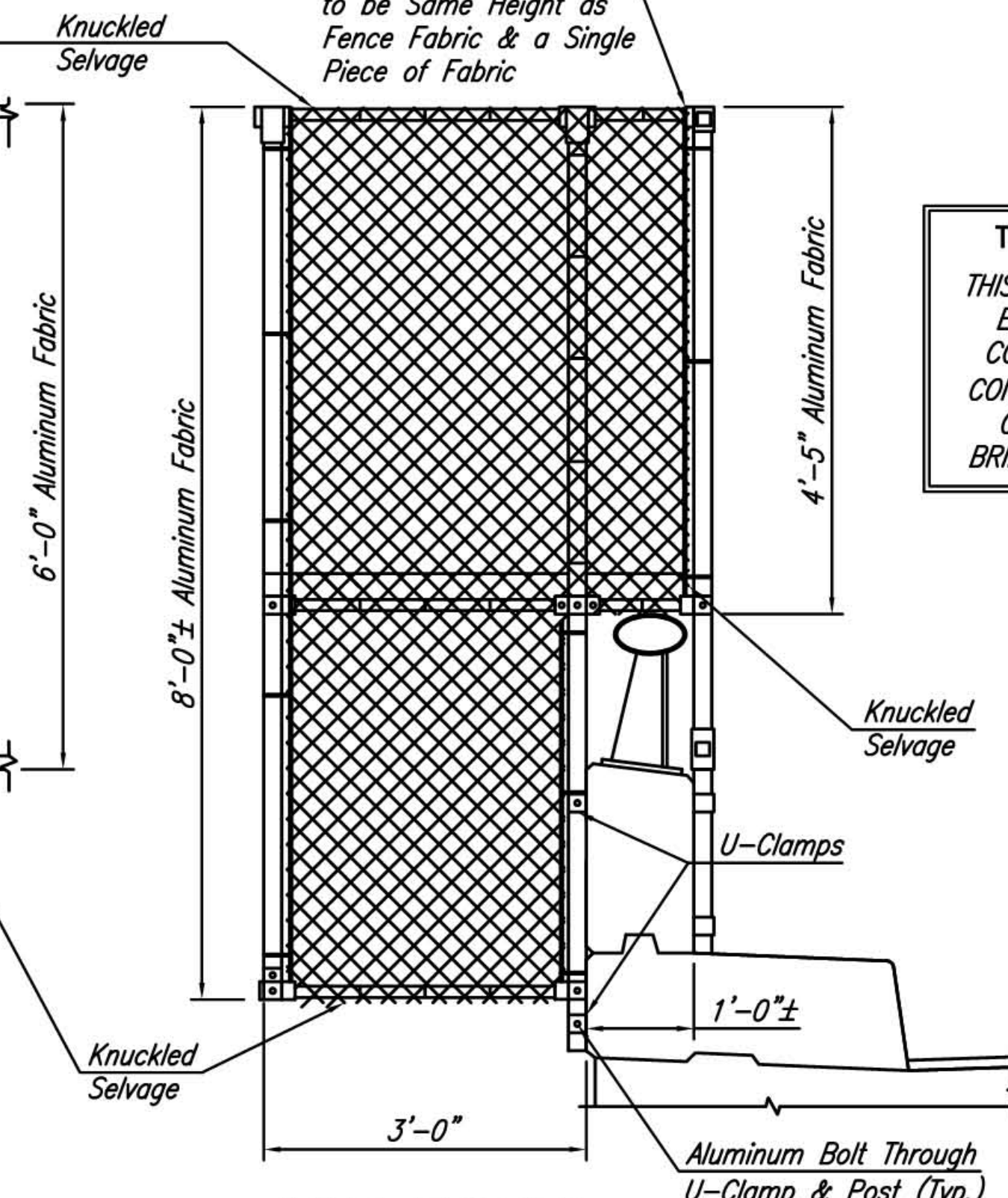
DETAILED ELEVATION



SECTION A-A



END POST

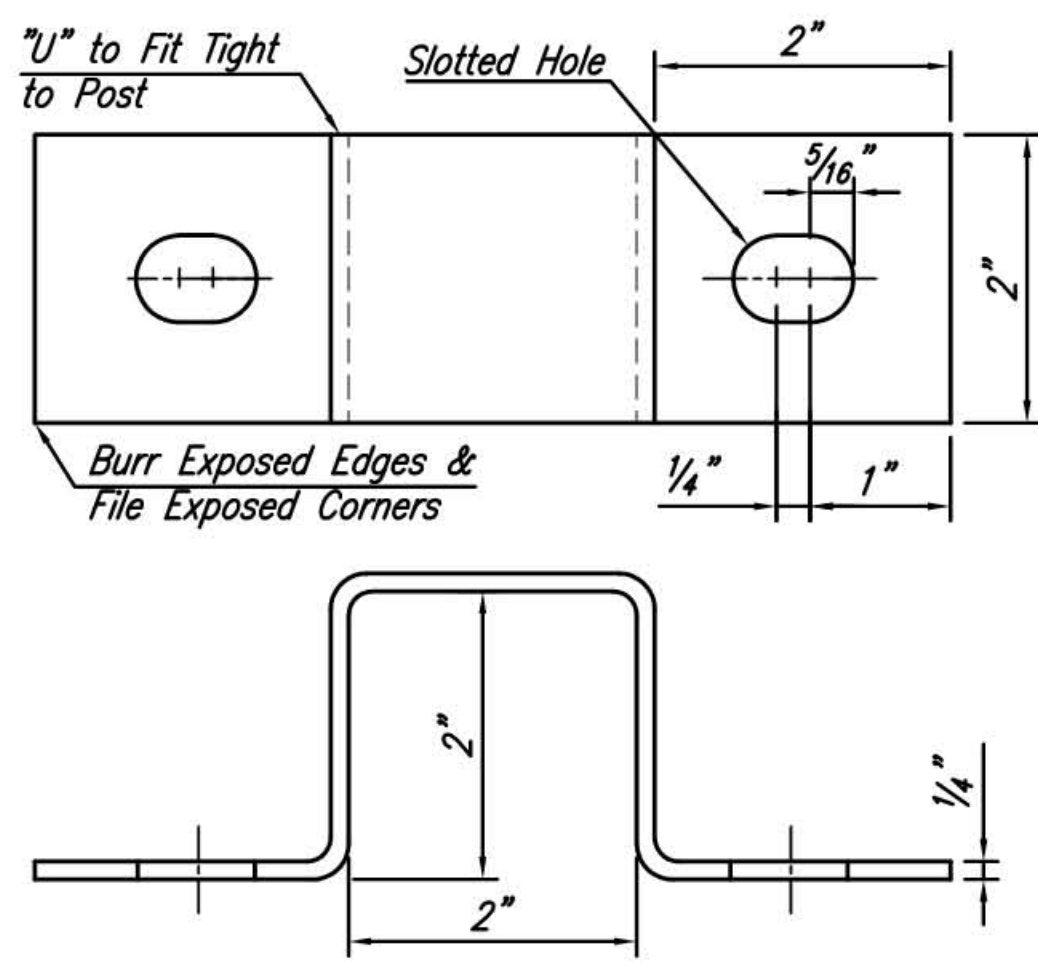


WING DETAILS

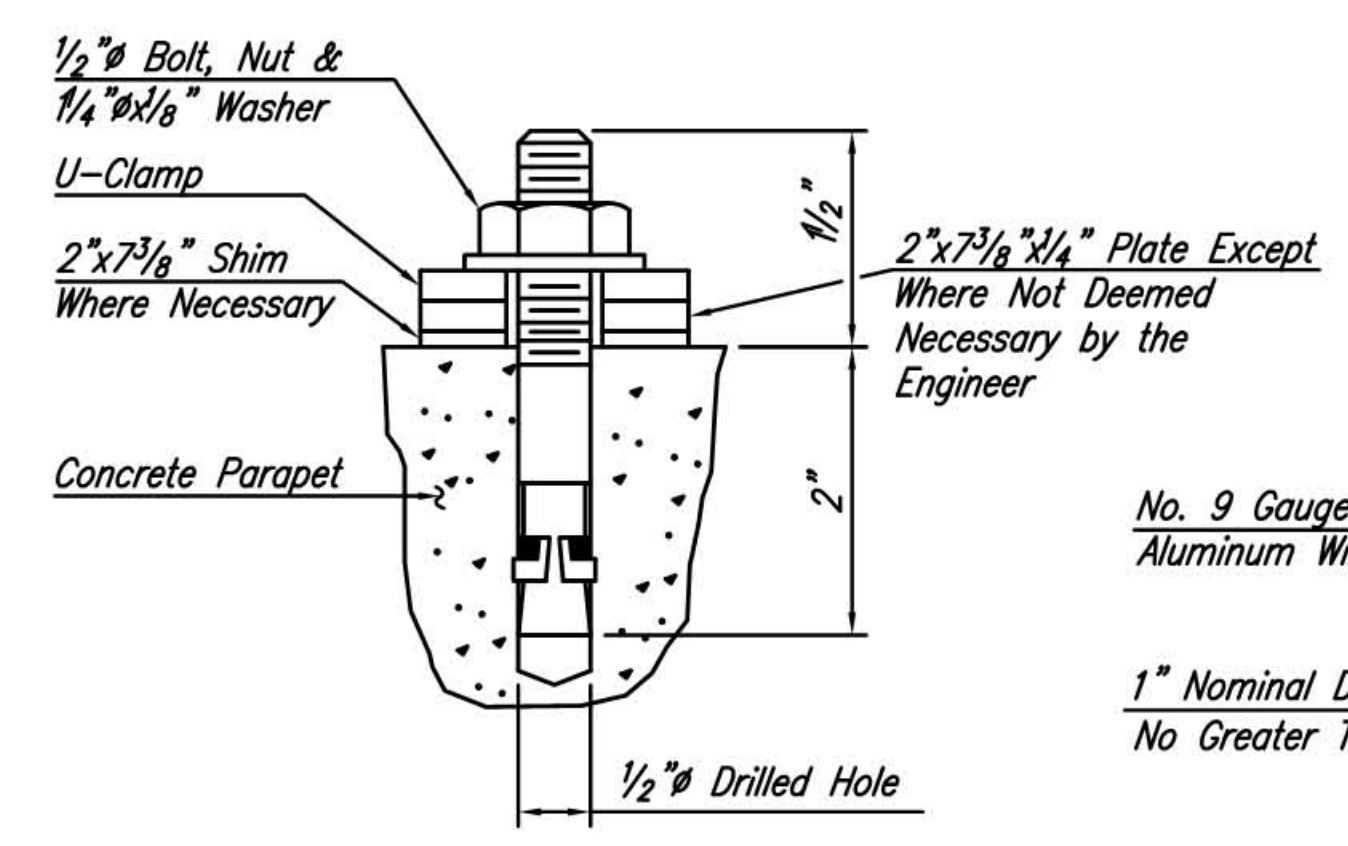
3 4

THIS DRAWING FOR REFERENCE ONLY
 THIS DRAWING MAY ONLY BE USED FOR REPAIR OF EXISTING AUTHORITY BRIDGE FENCING. NEW OR COMPLETE REPLACEMENT BRIDGE FENCING SHALL CONFORM TO THE REQUIREMENTS OF THE OWNER/ OPERATOR OF THE ROADWAY CARRIED BY THE BRIDGE, PER DIVISION 500 OF THE SPECIFICATIONS

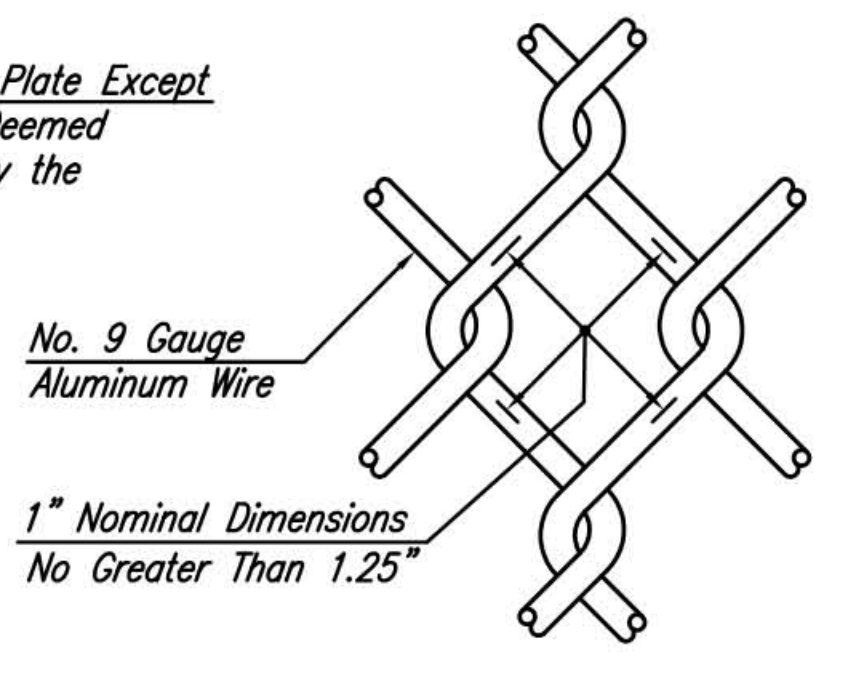
- NOTES:**
- All areas of contact between aluminum and concrete shall be painted (see Subsection 511.03B).
 - Steel surfaces shall be prevented from coming in contact with aluminum surfaces by means of a protective coating or pads of neoprene or similar material placed between the dissimilar metals; as approved by the Engineer.
 - Top rail is fastened at each end post and to one post in each run between expansion sleeves.
 - For details not shown on this sheet, see Standard Drawing BF-2.



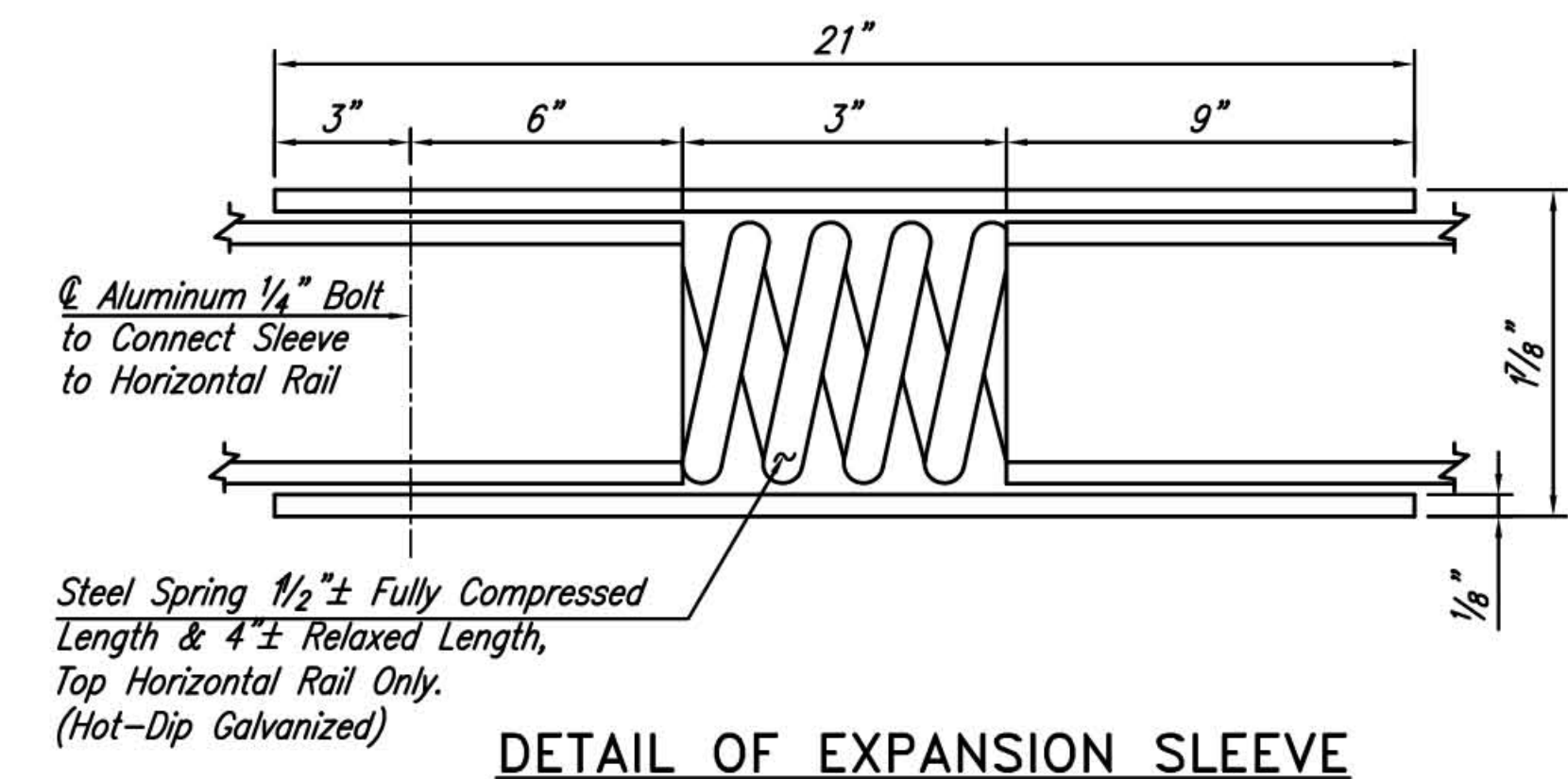
DETAIL OF ALUMINUM U-CLAMP



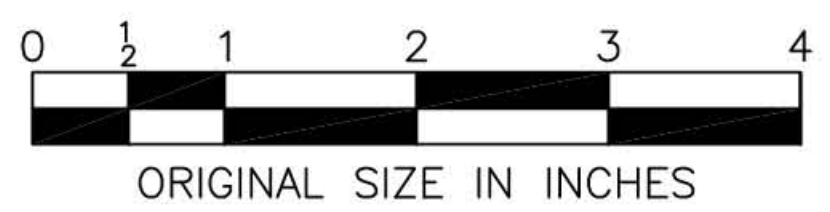
DETAIL OF ANCHOR BOLT FOR U-CLAMP



DETAIL OF ALUMINUM FABRIC



DETAIL OF EXPANSION SLEEVE



App. No.	DATE	REVISION
4	5/14	NOTE REVISED
3	2/05	NOTE ADDED
2	12/96	MINOR REVISIONS
1	9/87	MINOR REVISIONS
	3/87	REISSUED; CONFORMS TO 1987 SPECS.

NEW JERSEY TURNPIKE AUTHORITY
NEW JERSEY TURNPIKE

BRIDGE FENCING
SAFETY WALK AND PARAPET MOUNTED

OFFICE OF THE CHIEF ENGINEER
 WOODBRIDGE, NEW JERSEY

2004 STANDARD DRAWING
BF-1