

Public Hearing Record

New Jersey Turnpike Authority
Improvements at Garden State Parkway Interchange 163
Borough of Paramus, Bergen County, New Jersey
March 2014

SUBMITTED BY:

Dewberry

600 Parsippany Road, Suite 301
Parsippany, NJ 07054

PREPARED FOR:

New Jersey Turnpike Authority

581 Main Street
P.O. Box 5042
Woodbridge, NJ 07095

Public Hearing Record
New Jersey Turnpike Authority
Garden State Parkway Interchange 163 Improvements
OPS No. 3339
Borough of Paramus, Bergen County, New Jersey

TABLE OF CONTENTS

	Page
1.0 Introduction.....	1
2.0 Hearing Summary.....	1
3.0 Project Need.....	1
4.0 Project Description	1
5.0 Notice of Public Hearing	2
5.1 Written Notice	2
5.2 Legal Notice	3
6.0 Public Information Center and Public Hearing	3
7.0 Public Comments	3

LIST OF FIGURES

Appendix A	Notification Letters
Appendix B	Public Notices
Appendix C	Sign-in Sheets and Hearing Handout
Appendix D	Hearing Transcript

1.0 Introduction

On Tuesday, December 10, 2013, a Public Information Center (PIC) and Public Hearing (Hearing) were held by the New Jersey Turnpike Authority (Authority) for the Garden State Parkway (GSP) Interchange 163 Improvements, located at the GSP's crossing of NJ Route 17, in the Borough of Paramus, Bergen County, New Jersey. This Hearing was held pursuant to both the New Jersey Executive Order 172 (EO 172) and the No Net Loss Reforestation Act (N.J.S.A. 13:1L-14.1 et seq.). The hearing was held at the Paramus Life Safety Complex, Carlough Drive, Paramus Borough, New Jersey, 07652.

2.0 Hearing Summary

Design team members in attendance included representatives from the Authority and the consultant team. Two gentlemen, affiliated with the Paramus Shade Tree Commission were in also in attendance.

The Public Hearing began at 6:00 pm with a formal presentation by Lamis Malak of New Jersey Turnpike Authority and Anthony Fulco of Dewberry, after which the public was given the opportunity to provide comments. The presentation was recorded by a certified court reporter. No public comments were provided at the public hearing which concluded at 7:00 pm.

The Paramus Shade Tree Commission members inquired about the proposed deforestation (approximately 4 acres) and the proposed compensation. It was explained to them that mitigation will take the form of monetary compensation to the New Jersey Department of Environmental Protection.

3.0 Project Need

Interchange 163 is a partial interchange that provides connections with the northbound GSP to and from northbound Route 17, and with the southbound GSP to and from southbound Route 17. The northbound and southbound GSP exit ramps are both left side exits, and this condition contributes significantly to the operational issues at this interchange resulting in slower moving exiting vehicles in the high-speed left lanes. The purpose of the project is to improve traffic operational conditions and safety at the exit ramps of Interchange 163, as well as alleviate current recurring traffic congestion.

4.0 Project Description

The Initially Preferred Alternative (IPA) relocates the northbound and southbound main line GSP into the existing median area crossing over Route 17 on new structures. This new alignment closes the existing left side exits on both the northbound and southbound GSP, and both ramps are reconstructed as standard right side exits.

The realignment of the northbound GSP to the west allows Ramp 163 NBX, the northbound GSP exit ramp to northbound Route 17, to be reconstructed as a right side

exit without moving traffic closer to the existing homes along the east side of the GSP and without the need for right-of-way (ROW) acquisition. This new right side exit for Ramp 163 NBX can utilize the existing northbound GSP structures over Ramp 163 SBX, as well as Route 17, and can connect to the existing Ramp 163 NBX pavement prior to accessing northbound Route 17. Ramp 163 NBX would cross under new structures carrying the realigned northbound and southbound GSP, and also under the existing southbound GSP bridge over this ramp, which would now be utilized for the relocated Ramp 163 SBX. Ramp 163 NBE, the northbound Route 17 exit ramp to the northbound GSP, can remain in place.

In the southbound direction, the realignment of the southbound GSP toward the east into the median area allows Ramp 163 SBX to be reconstructed as a right side exit without moving traffic closer to the existing adjacent commercial site (formerly Einstein Moomjy) and without the need for ROW acquisition. This new right side exit ramp can utilize the existing southbound GSP structures over both Ramp 163 NBX and Route 17. Ramp 163 SBX would cross under new structures carrying the realigned northbound and southbound GSP, and also under the existing northbound GSP bridge over this ramp, which would now be utilized for relocated Ramp 163 NBX. Ramp 163 SBE, the southbound Route 17 exit ramp to the southbound GSP, can remain largely in place prior to connecting to the relocated southbound GSP. No ROW acquisition will result from these improvements.

As noted previously, proposed Ramps 163 SBX and 163 NBX would utilize existing northbound and southbound GSP structures. Modifications to these structures will be required to accommodate these proposed ramps, including the removal of the widened portion of the structures which were constructed in 1976, replacing the bridge decks and installing new parapets. Structure modifications include full deck replacement.

5.0 Notice of Public Hearing

5.1 Written Notice

A table of the local, county, and state public officials who were sent written notice of the Public Hearing can be found below. A copy of the notification letter and Public Hearing Informational Handout can be found in Appendix A.

First	Last	Agency	Title
Richard	LaBarbiera	Paramus Borough	Mayor
Joseph	D'Arco	Paramus Borough	Administrator
Annemarie	Krusznis	Paramus Borough	Borough Clerk
Peter	Ten Kate, PE	Paramus Borough	Borough Engineer
Kathleen	Donovan	Bergen County	Bergen County Executive
David	Ganz	Bergen County Freeholders	Chairman
John S.	Hogan	Bergen County	County Clerk
Joseph A.	Femia, PE	Bergen County	County Engineer
Edward J.	Trawinski	Bergen County	County Administrator
Nicholas	Dogias	New Jersey Department of Transportation	Project Manager

5.2 Legal Notice

Public notices for the Public Hearing was published in the Bergen Record and Star Ledger on November 15, 2013. A copy of the legal notice and affidavit is included in Appendix B.

6.0 Public Information Center and Public Hearing

The PIC and Public Hearing were held from 6:00 pm to 7:00 pm on Tuesday, December 10, 2013 at the Paramus Life Safety Complex. Total attendance was 4 people. A copy of the sign-in sheet and the handout that was presented to all attendees is included in Appendix C.

The Public Hearing began at 6:00 pm with a formal presentation, after which the public was given the opportunity to provide comments. The presentation and public comment period were recorded by a Certified Court Reporter. No comments were offered by the public. A copy of the hearing transcript is included in Appendix D.

7.0 Public Comments

A written comment period of 60 days subsequent to the public hearing was provided to the public. Written and email comments were accepted by the Authority until Monday, February 10, 2014 at 5:00 pm; however, no comments were received.

Appendix A: Notification Letters



www.dewberry.com



New Jersey Turnpike Authority

ADMINISTRATION BUILDING - 581 MAIN STREET
P.O. BOX 5042 - WOODBRIDGE, NEW JERSEY 07095
TELEPHONE (732) 750-5300

CHRIS CHRISTIE
GOVERNOR

KIM GUADAGNO
LIEUTENANT GOVERNOR

JAMES S. SIMPSON, *Chairman*
RONALD GRAVINO, *Vice Chairman*
MICHAEL R. DuPONT, *Treasurer*
HAROLD L. HODES, *Commissioner*
RAYMOND M. POCINO, *Commissioner*
ULISES E. DIAZ, *Commissioner*
DANIEL F. BECHT, *Commissioner*
JAN WALDEN, *Commissioner*
VERONIQUE HAKIM, *Executive Director*

November 14, 2013

Honorable Richard A. LaBarbiera
Mayor, Borough of Paramus
Borough Hall
1 Jockish Square
Paramus, NJ 07652

Re: New Jersey Turnpike Authority
Notice of Public Hearing – December 10, 2013
Garden State Parkway Interchange 163 Improvements
Milepost 162.7 to 163.7
Borough of Paramus, Bergen County, New Jersey

Dear Mayor LaBarbiera:

Please be advised that the New Jersey Turnpike Authority (the "Authority") will be holding a Public Hearing on Tuesday, December 10, 2013 beginning at 4:30 p.m. and concluding at 7:00 p.m. at the Paramus Life Safety Complex, Carlough Drive, Paramus, New Jersey. Details of the hearing and a description of the proposed improvements are outlined in the attached public hearing notice and hearing brochure.

The public hearing is being held to satisfy the requirements of Executive Order No. 172 which requires that the Authority conduct a public hearing to inform municipal and county officials and the public about certain highway projects prior to the start of project construction. The public hearing is also being held to satisfy the *New Jersey No Net Loss Reforestation Act* which requires a public hearing when a project involves the clearing of greater than one acre of forest and a plan for compensation or reforestation.

The Authority invites and encourages you to attend the public hearing. If you have any questions or comments, you may contact the Authority's Project Engineer and Manager, Lamis Malak at (732) 750-5300, Ext. 8247.

Very truly yours,

Maïra K. Tully
Deputy General Counsel

MKT/jlr/Enclosures

cc: Lamis Malak, P.E.
Megan Mulcahy Romano, Chief of Staff
Thomas Feeney, Media Relations Coordinator



New Jersey Turnpike Authority

ADMINISTRATION BUILDING - 581 MAIN STREET
P.O. BOX 5042 - WOODBRIDGE, NEW JERSEY 07095
TELEPHONE (732) 750-5300

CHRIS CHRISTIE
GOVERNOR

KIM GUADAGNO
LIEUTENANT GOVERNOR

JAMES S. SIMPSON, *Chairman*
RONALD GRAVINO, *Vice Chairman*
MICHAEL R. DuPONT, *Treasurer*
HAROLD L. HODES, *Commissioner*
RAYMOND M. POCINO, *Commissioner*
ULISES E. DIAZ, *Commissioner*
DANIEL F. BECHT, *Commissioner*
JAN WALDEN, *Commissioner*
VERONIQUE HAKIM, *Executive Director*

November 14, 2013

Joseph D'Arco, Administrator
Borough of Paramus
Borough Hall
1 Jockish Square
Paramus, NJ 07652

Re: New Jersey Turnpike Authority
Notice of Public Hearing – December 10, 2013
Garden State Parkway Interchange 163 Improvements
Milepost 162.7 to 163.7
Borough of Paramus, Bergen County, New Jersey

Dear Administrator D'Arco:

Please be advised that the New Jersey Turnpike Authority (the "Authority") will be holding a Public Hearing on Tuesday, December 10, 2013 beginning at 4:30 p.m. and concluding at 7:00 p.m. at the Paramus Life Safety Complex, Carlough Drive, Paramus, New Jersey. Details of the hearing and a description of the proposed improvements are outlined in the attached public hearing notice and hearing brochure.

The public hearing is being held to satisfy the requirements of Executive Order No. 172 which requires that the Authority conduct a public hearing to inform municipal and county officials and the public about certain highway projects prior to the start of project construction. The public hearing is also being held to satisfy the *New Jersey No Net Loss Reforestation Act* which requires a public hearing when a project involves the clearing of greater than one acre of forest and a plan for compensation or reforestation.

The Authority invites and encourages you to attend the public hearing. If you have any questions or comments, you may contact the Authority's Project Engineer and Manager, Lamis Malak at (732) 750-5300, Ext. 8247.

Very truly yours,

Maura K. Tully
Deputy General Counsel

MKT/jlr/Enclosures

cc: Lamis Malak, P.E.
Megan Mulcahy Romano, Chief of Staff
Thomas Feeney, Media Relations Coordinator



New Jersey Turnpike Authority

ADMINISTRATION BUILDING - 581 MAIN STREET
P.O. BOX 5042 - WOODBRIDGE, NEW JERSEY 07095
TELEPHONE (732) 750-5300

CHRIS CHRISTIE
GOVERNOR

KIM GUADAGNO
LIEUTENANT GOVERNOR

JAMES S. SIMPSON, *Chairman*
RONALD GRAVINO, *Vice Chairman*
MICHAEL R. DuPONT, *Treasurer*
HAROLD L. HODES, *Commissioner*
RAYMOND M. POCINO, *Commissioner*
ULISES E. DIAZ, *Commissioner*
DANIEL F. BECHT, *Commissioner*
JAN WALDEN, *Commissioner*
VERONIQUE HAKIM, *Executive Director*

November 14, 2013

Annemarie Krusznis, Borough Clerk
Borough of Paramus
Borough Hall
1 Jockish Square
Paramus, NJ 07652

Re: New Jersey Turnpike Authority
Notice of Public Hearing – December 10, 2013
Garden State Parkway Interchange 163 Improvements
Milepost 162.7 to 163.7
Borough of Paramus, Bergen County, New Jersey

Dear Clerk Krusznis:

Please be advised that the New Jersey Turnpike Authority (the "Authority") will be holding a Public Hearing on Tuesday, December 10, 2013 beginning at 4:30 p.m. and concluding at 7:00 p.m. at the Paramus Life Safety Complex, Carlough Drive, Paramus, New Jersey. Details of the hearing and a description of the proposed improvements are outlined in the attached public hearing notice and hearing brochure.

The public hearing is being held to satisfy the requirements of Executive Order No. 172 which requires that the Authority conduct a public hearing to inform municipal and county officials and the public about certain highway projects prior to the start of project construction. The public hearing is also being held to satisfy the *New Jersey No Net Loss Reforestation Act* which requires a public hearing when a project involves the clearing of greater than one acre of forest and a plan for compensation or reforestation.

The Authority invites and encourages you to attend the public hearing. If you have any questions or comments, you may contact the Authority's Project Engineer and Manager, Lamis Malak at (732) 750-5300, Ext. 8247.

Very truly yours,

Maura K. Tully
Deputy General Counsel

MKT/jlr/Enclosures

cc: Lamis Malak, P.E.
Megan Mulcahy Romano, Chief of Staff
Thomas Feeney, Media Relations Coordinator



New Jersey Turnpike Authority

ADMINISTRATION BUILDING - 581 MAIN STREET
P.O. BOX 5042 - WOODBRIDGE, NEW JERSEY 07095
TELEPHONE (732) 750-5300

CHRIS CHRISTIE
GOVERNOR

KIM GUADAGNO
LIEUTENANT GOVERNOR

JAMES S. SIMPSON, *Chairman*
RONALD GRAVINO, *Vice Chairman*
MICHAEL R. DuPONT, *Treasurer*
HAROLD L. HODES, *Commissioner*
RAYMOND M. POCINO, *Commissioner*
ULISES E. DIAZ, *Commissioner*
DANIEL F. BECHT, *Commissioner*
JAN WALDEN, *Commissioner*
VERONIQUE HAKIM, *Executive Director*

November 14, 2013

Peter Ten Kate, P.E., Borough Engineer
Borough of Paramus
Borough Hall
1 Jockish Square
Paramus, NJ 07652

Re: New Jersey Turnpike Authority
Notice of Public Hearing – December 10, 2013
Garden State Parkway Interchange 163 Improvements
Milepost 162.7 to 163.7
Borough of Paramus, Bergen County, New Jersey

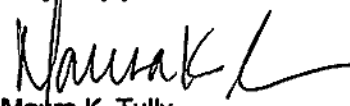
Dear Mr. Ten Kate:

Please be advised that the New Jersey Turnpike Authority (the "Authority") will be holding a Public Hearing on Tuesday, December 10, 2013 beginning at 4:30 p.m. and concluding at 7:00 p.m. at the Paramus Life Safety Complex, Carlough Drive, Paramus, New Jersey. Details of the hearing and a description of the proposed improvements are outlined in the attached public hearing notice and hearing brochure.

The public hearing is being held to satisfy the requirements of Executive Order No. 172 which requires that the Authority conduct a public hearing to inform municipal and county officials and the public about certain highway projects prior to the start of project construction. The public hearing is also being held to satisfy the *New Jersey No Net Loss Reforestation Act* which requires a public hearing when a project involves the clearing of greater than one acre of forest and a plan for compensation or reforestation.

The Authority invites and encourages you to attend the public hearing. If you have any questions or comments, you may contact the Authority's Project Engineer and Manager, Lamis Malak at (732) 750-5300, Ext. 8247.

Very truly yours,


Maura K. Tully
Deputy General Counsel

MKT/jlr/Enclosures

cc: Lamis Malak, P.E.
Megan Mulcahy Romano, Chief of Staff
Thomas Feeney, Media Relations Coordinator



New Jersey Turnpike Authority

ADMINISTRATION BUILDING - 581 MAIN STREET
P.O. BOX 5042 - WOODBRIDGE, NEW JERSEY 07095
TELEPHONE (732) 750-5300

CHRIS CHRISTIE
GOVERNOR

KIM GUADAGNO
LIEUTENANT GOVERNOR

JAMES S. SIMPSON, *Chairman*
RONALD GRAVINO, *Vice Chairman*
MICHAEL R. DUPONT, *Treasurer*
HAROLD L. HODES, *Commissioner*
RAYMOND M. POCINO, *Commissioner*
ULISES E. DIAZ, *Commissioner*
DANIEL F. BECHT, *Commissioner*
JAN WALDEN, *Commissioner*
VERONIQUE HAKIM, *Executive Director*

November 14, 2013

Honorable Kathleen Donovan
Bergen County Executive
One Bergen County Plaza
Hackensack, NJ 07601

Re: New Jersey Turnpike Authority
Notice of Public Hearing – December 10, 2013
Garden State Parkway Interchange 163 Improvements
Milepost 162.7 to 163.7
Borough of Paramus, Bergen County, New Jersey

Dear County Executive Donovan:

Please be advised that the New Jersey Turnpike Authority (the "Authority") will be holding a Public Hearing on Tuesday, December 10, 2013 beginning at 4:30 p.m. and concluding at 7:00 p.m. at the Paramus Life Safety Complex, Carlough Drive, Paramus, New Jersey. Details of the hearing and a description of the proposed improvements are outlined in the attached public hearing notice and hearing brochure.

The public hearing is being held to satisfy the requirements of Executive Order No. 172 which requires that the Authority conduct a public hearing to inform municipal and county officials and the public about certain highway projects prior to the start of project construction. The public hearing is also being held to satisfy the *New Jersey No Net Loss Reforestation Act* which requires a public hearing when a project involves the clearing of greater than one acre of forest and a plan for compensation or reforestation.

The Authority invites and encourages you to attend the public hearing. If you have any questions or comments, you may contact the Authority's Project Engineer and Manager, Lamis Malak at (732) 750-5300, Ext. 8247.

Very truly yours,

Maura K. Tully
Deputy General Counsel

MKT/jlr/Enclosures

cc: Lamis Malak, P.E.
Megan Mulcahy Romano, Chief of Staff
Thomas Feeney, Media Relations Coordinator



New Jersey Turnpike Authority

ADMINISTRATION BUILDING - 581 MAIN STREET
P.O. BOX 5042 - WOODBRIDGE, NEW JERSEY 07095
TELEPHONE (732) 750-5300

CHRIS CHRISTIE
GOVERNOR

KIM GUADAGNO
LIEUTENANT GOVERNOR

JAMES S. SIMPSON, *Chairman*
RONALD GRAVINO, *Vice Chairman*
MICHAEL R. DuPONT, *Treasurer*
HAROLD L. HODES, *Commissioner*
RAYMOND M. POCINO, *Commissioner*
ULISES E. DIAZ, *Commissioner*
DANIEL F. BECHT, *Commissioner*
JAN WALDEN, *Commissioner*
VERONIQUE HAKIM, *Executive Director*

November 14, 2013

Honorable David Ganz, Chairman
Bergen County Freeholders
One Bergen County Plaza
Hackensack, NJ 07601

Re: New Jersey Turnpike Authority
Notice of Public Hearing – December 10, 2013
Garden State Parkway Interchange 163 Improvements
Milepost 162.7 to 163.7
Borough of Paramus, Bergen County, New Jersey

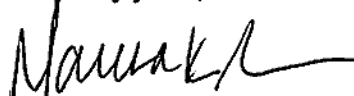
Dear Freeholder Chairman Ganz:

Please be advised that the New Jersey Turnpike Authority (the "Authority") will be holding a Public Hearing on Tuesday, December 10, 2013 beginning at 4:30 p.m. and concluding at 7:00 p.m. at the Paramus Life Safety Complex, Carlough Drive, Paramus, New Jersey. Details of the hearing and a description of the proposed improvements are outlined in the attached public hearing notice and hearing brochure.

The public hearing is being held to satisfy the requirements of Executive Order No. 172 which requires that the Authority conduct a public hearing to inform municipal and county officials and the public about certain highway projects prior to the start of project construction. The public hearing is also being held to satisfy the *New Jersey No Net Loss Reforestation Act* which requires a public hearing when a project involves the clearing of greater than one acre of forest and a plan for compensation or reforestation.

The Authority invites and encourages you to attend the public hearing. If you have any questions or comments, you may contact the Authority's Project Engineer and Manager, Lamis Malak at (732) 750-5300, Ext. 8247.

Very truly yours,


Maura K. Tully
Deputy General Counsel

MKT/jlr/Enclosures

cc: Lamis Malak, P.E.
Megan Mulcahy Romano, Chief of Staff
Thomas Feeney, Media Relations Coordinator



New Jersey Turnpike Authority

ADMINISTRATION BUILDING - 581 MAIN STREET
P.O. BOX 5042 - WOODBRIDGE, NEW JERSEY 07095
TELEPHONE (732) 750-5300

CHRIS CHRISTIE
GOVERNOR

KIM GUADAGNO
LIEUTENANT GOVERNOR

JAMES S. SIMPSON, *Chairman*
RONALD GRAVINO, *Vice Chairman*
MICHAEL R. DuPONT, *Treasurer*
HAROLD L. HODES, *Commissioner*
RAYMOND M. POCINO, *Commissioner*
ULISES E. DIAZ, *Commissioner*
DANIEL F. BECHT, *Commissioner*
JAN WALDEN, *Commissioner*
VERONIQUE HAKIM, *Executive Director*

November 14, 2013

John S. Hogan, Clerk
Bergen County
One Bergen County Plaza, 4th Floor
Hackensack, NJ 07601

Re: New Jersey Turnpike Authority
Notice of Public Hearing – December 10, 2013
Garden State Parkway Interchange 163 Improvements
Milepost 162.7 to 163.7
Borough of Paramus, Bergen County, New Jersey

Dear Clerk Hogan:

Please be advised that the New Jersey Turnpike Authority (the "Authority") will be holding a Public Hearing on Tuesday, December 10, 2013 beginning at 4:30 p.m. and concluding at 7:00 p.m. at the Paramus Life Safety Complex, Carlough Drive, Paramus, New Jersey. Details of the hearing and a description of the proposed improvements are outlined in the attached public hearing notice and hearing brochure.

The public hearing is being held to satisfy the requirements of Executive Order No. 172 which requires that the Authority conduct a public hearing to inform municipal and county officials and the public about certain highway projects prior to the start of project construction. The public hearing is also being held to satisfy the *New Jersey No Net Loss Reforestation Act* which requires a public hearing when a project involves the clearing of greater than one acre of forest and a plan for compensation or reforestation.

The Authority invites and encourages you to attend the public hearing. If you have any questions or comments, you may contact the Authority's Project Engineer and Manager, Lamis Malak at (732) 750-5300, Ext. 8247.

Very truly yours,

Maureen K. Tully
Deputy General Counsel

MKT/jlr/Enclosures

cc: Lamis Malak, P.E.
Megan Mulcahy Romano, Chief of Staff
Thomas Feeney, Media Relations Coordinator



New Jersey Turnpike Authority

ADMINISTRATION BUILDING - 581 MAIN STREET
P.O. BOX 5042 - WOODBRIDGE, NEW JERSEY 07095
TELEPHONE (732) 750-5300

CHRIS CHRISTIE
GOVERNOR

KIM GUADAGNO
LIEUTENANT GOVERNOR

JAMES S. SIMPSON, *Chairman*
RONALD GRAVINO, *Vice Chairman*
MICHAEL R. DUPONT, *Treasurer*
HAROLD L. HODES, *Commissioner*
RAYMOND M. POCINO, *Commissioner*
ULISES E. DIAZ, *Commissioner*
DANIEL F. BECHT, *Commissioner*
JAN WALDEN, *Commissioner*
VERONIQUE HAKIM, *Executive Director*

November 14, 2013

Joseph A. Femia, P.E.
Bergen County Engineer
One Bergen County Plaza, 4th Floor
Hackensack, NJ 07601

Re: New Jersey Turnpike Authority
Notice of Public Hearing – December 10, 2013
Garden State Parkway Interchange 163 Improvements
Milepost 162.7 to 163.7
Borough of Paramus, Bergen County, New Jersey

Dear Mr. Femia:

Please be advised that the New Jersey Turnpike Authority (the "Authority") will be holding a Public Hearing on Tuesday, December 10, 2013 beginning at 4:30 p.m. and concluding at 7:00 p.m. at the Paramus Life Safety Complex, Carlough Drive, Paramus, New Jersey. Details of the hearing and a description of the proposed improvements are outlined in the attached public hearing notice and hearing brochure.

The public hearing is being held to satisfy the requirements of Executive Order No. 172 which requires that the Authority conduct a public hearing to inform municipal and county officials and the public about certain highway projects prior to the start of project construction. The public hearing is also being held to satisfy the *New Jersey No Net Loss Reforestation Act* which requires a public hearing when a project involves the clearing of greater than one acre of forest and a plan for compensation or reforestation.

The Authority invites and encourages you to attend the public hearing. If you have any questions or comments, you may contact the Authority's Project Engineer and Manager, Lamis Malak at (732) 750-5300, Ext. 8247.

Very truly yours,

Maura K. Tully
Deputy General Counsel

MKT/jlr/Enclosures

cc: Lamis Malak, P.E.
Megan Mulcahy Romano, Chief of Staff
Thomas Feeney, Media Relations Coordinator



New Jersey Turnpike Authority

ADMINISTRATION BUILDING - 581 MAIN STREET
P.O. BOX 5042 - WOODBRIDGE, NEW JERSEY 07095
TELEPHONE (732) 750-5300

CHRIS CHRISTIE
GOVERNOR

KIM GUADAGNO
LIEUTENANT GOVERNOR

JAMES S. SIMPSON, *Chairman*
RONALD GRAVINO, *Vice Chairman*
MICHAEL R. DuPONT, *Treasurer*
HAROLD L. HODES, *Commissioner*
RAYMOND M. POCINO, *Commissioner*
ULISES E. DIAZ, *Commissioner*
DANIEL F. BECHT, *Commissioner*
JAN WALDEN, *Commissioner*
VERONIQUE HAKIM, *Executive Director*

November 14, 2013

Edward J. Trawinski, Administrator
Bergen County Engineer
One Bergen County Plaza, 4th Floor
Hackensack, NJ 07601

Re: New Jersey Turnpike Authority
Notice of Public Hearing – December 10, 2013
Garden State Parkway Interchange 163 Improvements
Milepost 162.7 to 163.7
Borough of Paramus, Bergen County, New Jersey

Dear Administrator Trawinski:

Please be advised that the New Jersey Turnpike Authority (the "Authority") will be holding a Public Hearing on Tuesday, December 10, 2013 beginning at 4:30 p.m. and concluding at 7:00 p.m. at the Paramus Life Safety Complex, Carlough Drive, Paramus, New Jersey. Details of the hearing and a description of the proposed improvements are outlined in the attached public hearing notice and hearing brochure.

The public hearing is being held to satisfy the requirements of Executive Order No. 172 which requires that the Authority conduct a public hearing to inform municipal and county officials and the public about certain highway projects prior to the start of project construction. The public hearing is also being held to satisfy the *New Jersey No Net Loss Reforestation Act* which requires a public hearing when a project involves the clearing of greater than one acre of forest and a plan for compensation or reforestation.

The Authority invites and encourages you to attend the public hearing. If you have any questions or comments, you may contact the Authority's Project Engineer and Manager, Lamis Malak at (732) 750-5300, Ext. 8247.

Very truly yours,


Maura K. Tully
Deputy General Counsel

MKT/jlr/Enclosures

cc: Lamis Malak, P.E.
Megan Mulcahy Romano, Chief of Staff
Thomas Feeney, Media Relations Coordinator



New Jersey Turnpike Authority

ADMINISTRATION BUILDING - 581 MAIN STREET
P.O. BOX 5042 - WOODBRIDGE, NEW JERSEY 07095
TELEPHONE (732) 750-5300

CHRIS CHRISTIE
GOVERNOR

KIM GUADAGNO
LIEUTENANT GOVERNOR

JAMES S. SIMPSON, *Chairman*
RONALD GRAVINO, *Vice Chairman*
MICHAEL R. DuPONT, *Treasurer*
HAROLD L. HODES, *Commissioner*
RAYMOND M. POCINO, *Commissioner*
ULISES E. DIAZ, *Commissioner*
DANIEL F. BECHT, *Commissioner*
JAN WALDEN, *Commissioner*
VERONIQUE HAKIM, *Executive Director*

November 14, 2013

Mr. Nicholas Dogias
NJ Department of Transportation
P.O. Box 600
1035 Parkway Avenue
Trenton, NJ 08625

Re: New Jersey Turnpike Authority
Notice of Public Hearing – December 10, 2013
Garden State Parkway Interchange 163 Improvements
Milepost 162.7 to 163.7
Borough of Paramus, Bergen County, New Jersey

Dear Mr. Dogias:

Please be advised that the New Jersey Turnpike Authority (the "Authority") will be holding a Public Hearing on Tuesday, December 10, 2013 beginning at 4:30 p.m. and concluding at 7:00 p.m. at the Paramus Life Safety Complex, Carlough Drive, Paramus, New Jersey. Details of the hearing and a description of the proposed improvements are outlined in the attached public hearing notice and hearing brochure.

The public hearing is being held to satisfy the requirements of Executive Order No. 172 which requires that the Authority conduct a public hearing to inform municipal and county officials and the public about certain highway projects prior to the start of project construction. The public hearing is also being held to satisfy the *New Jersey No Net Loss Reforestation Act* which requires a public hearing when a project involves the clearing of greater than one acre of forest and a plan for compensation or reforestation.

The Authority invites and encourages you to attend the public hearing. If you have any questions or comments, you may contact the Authority's Project Engineer and Manager, Lamis Malak at (732) 750-5300, Ext. 8247.

Very truly yours,

Maura K. Tully
Deputy General Counsel

MKT/jlr/Enclosures

cc: Lamis Malak, P.E.
Megan Mulcahy Romano, Chief of Staff
Thomas Feeney, Media Relations Coordinator

Appendix B: Public Notices



www.dewberry.com

**NEW JERSEY TURNPIKE AUTHORITY
NOTICE OF PUBLIC HEARING
GARDEN STATE PARKWAY
INTERCHANGE 163 IMPROVEMENTS PROJECT**

Borough of Paramus; BERGEN COUNTY

NOTICE IS HEREBY GIVEN that the New Jersey Turnpike Authority (the "Authority") will hold a Public Hearing in compliance with Executive Order 172 for the purpose of taking public comments on the proposed project, which includes Improvements to Garden State Parkway (GSP) Interchange 163 between milepost 162.7 and 163.7 (the "Project"). The Project is intended to improve safety along this section of the GSP by realigning northbound and southbound mainline sections of the GSP into the existing median in order to relocate the existing left side exits at the Interchange to the right side of the GSP. This project will also include stormwater drainage system enhancements and, new and rehabilitated bridges.

In accordance with the New Jersey No Net Loss Reforestation Act, N.J.S.A. 13:1L-14.2 et seq., the Authority will also present information concerning the proposed reforestation effort associated with the Project.

The Public Hearing will be held on Tuesday, December 10, 2013 from 4:30 p.m. to 7:00 p.m. in the Paramus Life Safety Complex, Carlough Drive, Borough of Paramus, New Jersey.

The purpose of the hearing is to inform the public about the Project and to solicit comments. Representatives of the Authority will be available at the hearing to discuss the Project. The opportunity for the public to present oral and/or written comments concerning the Project will be provided. The hearing format will consist of an official presentation at 6:00 p.m. by the Authority, followed by the opportunity for members of the public to offer verbal or written comments.

Written comments may also be submitted to the Authority prior to the hearing and for sixty (60) days after the close of the hearing. Written comments should be addressed to:

Lamis Malak, Hearing Officer
New Jersey Turnpike Authority
P.O. Box 5042
Woodbridge, New Jersey 07095-0542

VERONIQUE HAKIM
EXECUTIVE DIRECTOR

NJ TURNPIKE AUTHORITY
PO BOX 5042-581 Main St.
ATTN: JACKIE ROONEY
Woodbridge, NJ 07095-5042

The Record

STATE OF NEW JERSEY
COUNTY OF PASSAIC SS:

S. Abulhasme

**NEW JERSEY TURNPIKE AUTHORITY
NOTICE OF PUBLIC HEARING
GARDEN STATE PARKWAY
INTERCHANGE 163 IMPROVEMENTS
PROJECT**

Borough of Paramus; BERGEN COUNTY

NOTICE IS HEREBY GIVEN that the New Jersey Turnpike Authority (the "Authority") will hold a Public Hearing in compliance with Executive Order 172 for the purpose of taking public comments on the proposed project, which includes improvements to Garden State Parkway (GSP) Interchange 163 between milepost 162.7 and 163.7 (the "Project"). The Project is intended to improve safety along this section of the GSP by re-aligning northbound and southbound mainline sections of the GSP into the existing median in order to relocate the existing left side exits at the Interchange to the right side of the GSP. This project will also include stormwater drainage system enhancements and, new and rehabilitated bridges.

In accordance with the New Jersey No Net Loss Reforestation Act, N.J.S.A. 13:1L-14.2 et seq., the Authority will also present information concerning the proposed reforestation effort associated with the Project.

The Public Hearing will be held on Tuesday, December 10, 2013 from 4:30 p.m. to 7:00 p.m. in the Paramus Life Safety Complex, Carfough Drive, Borough of Paramus, New Jersey.

The purpose of the hearing is to inform the public about the Project and to solicit comments. Representatives of the Authority will be available at the hearing to discuss the Project. The opportunity for the public to present oral and/or written comments concerning the Project will be provided. The hearing format will consist of an official presentation at 6:00 p.m. by the Authority, followed by the opportunity for members of the public to offer verbal or written comments.

Written comments may also be submitted to the Authority prior to the hearing and for sixty (60) days after the close of the hearing. Written comments should be addressed to:

Lamia Malik, Hearing Officer
New Jersey Turnpike Authority
P.O. Box 5042
Woodbridge, New Jersey 07095-0542

VERONIQUE HAKIM
EXECUTIVE DIRECTOR
November 15, 2013-Fee:\$59.54(63) 3595798

Of full age, being duly sworn according to law, on his/her oath says that he/she is employed at North Jersey Media Group Inc., publisher of The Record. Annexed hereto is a true copy of the notice that was published on the following date(s):

11.15.2013

in The Record, a newspaper of general circulation and published in Hackensack, in the county of Bergen and circulated in Bergen, Passaic, Hudson, Morris and Essex Counties. Said newspaper is published seven days a week.

Subscribed and sworn before me this 2 day of January 2014 at Woodland Park, NJ

Sonja E Thorsland
A Notary Public of New Jersey

SONJA E THORSLAND
ID # 2359423
NOTARY PUBLIC
STATE OF NEW JERSEY
My Commission Expires May 03, 2017

NEW JERSEY TURNPIKE
AUTHORITY
NOTICE OF PUBLIC HEARING
GARDEN STATE PARKWAY
INTERCHANGE 163 IMPROVE-
MENTS PROJECT
Borough of Paramus; BERGEN
COUNTY

NOTICE IS HEREBY GIVEN that the New Jersey Turnpike Authority (the "Authority") will hold a Public Hearing in compliance with Executive Order 172 for the purpose of taking public comments on the proposed project, which includes improvements to Garden State Parkway (GSP) Interchange 163 between milepost 162.7 and 163.7 (the "Project"). The project is intended to improve safety along this section of the GSP by re-aligning northbound and southbound mainline sections of the GSP into the existing median in order to relocate the existing left side exits at the interchange to the right side of the GSP. This project will also include stormwater drainage system enhancements and new and rehabilitated bridges.

In accordance with the New Jersey No Net Loss Reforestation Act, N.J.S.A. 13:11-14.2 et seq., the Authority will also present information concerning the proposed reforestation effort associated with the Project.

The public hearing will be held on Tuesday, December 10, 2013 from 4:30 p.m. to 7:00 p.m. in the Paramus Life Safety Complex, Carlough Drive, Borough of Paramus, New Jersey.

The purpose of the hearing is to inform the public about the Project and to solicit comments. Representatives of the Authority will be available at the hearing to discuss the Project. The opportunity for the public to present oral and/or written comments concerning the Project will be provided. The hearing format will consist of an official presentation at 6:00 p.m. by the Authority, followed by the opportunity for members of the public to offer verbal or written comments.

Written comments may also be submitted to the Authority prior to the hearing and for sixty (60) days after the close of the hearing. Written comments should be addressed to:
Lamis Malak, Hearing Officer
New Jersey Turnpike Authority
P.O. Box 5042
Woodbridge, New Jersey
07095-0542
VERONIQUE HAKIM
EXECUTIVE DIRECTOR
11/18/2013 \$110.20

STATE OF NEW JERSEY } SS
COUNTY OF ESSEX

Tamilia Ramu

Being duly sworn, according to law, on his/her oath sayeth that he/she is CLERK of the Star-Ledger, in said County of Essex, and that the notice, of which the attached is a copy, was published in said paper on the 18th day of November, 2013 and continued therein for _____ successively, at least once in each _____ for Dw Tamilia Ramu

Sworn to and subscribed
before me this 16

day of December, 2013

[Signature]
NOTARY PUBLIC of NEW JERSEY

MEDINAH Y. JONES
Notary Public, State of New Jersey
My Commission Expires
January 18, 2018

Appendix C: Sign-in Sheets and Hearing Handout



www.dewberry.com

PUBLIC HEARING



**The New Jersey Turnpike Authority
Garden State Parkway Interchange 163 Improvements
From Milepost 162.7 to 163.7**

Date: December 10, 2013

Place: Paramus Life Safety Complex, Carlough Drive
Borough of Paramus, New Jersey 07652

Time: Public Information Center 4:30 - 6:00 pm
Public Hearing 6:00 pm - 7:00 pm

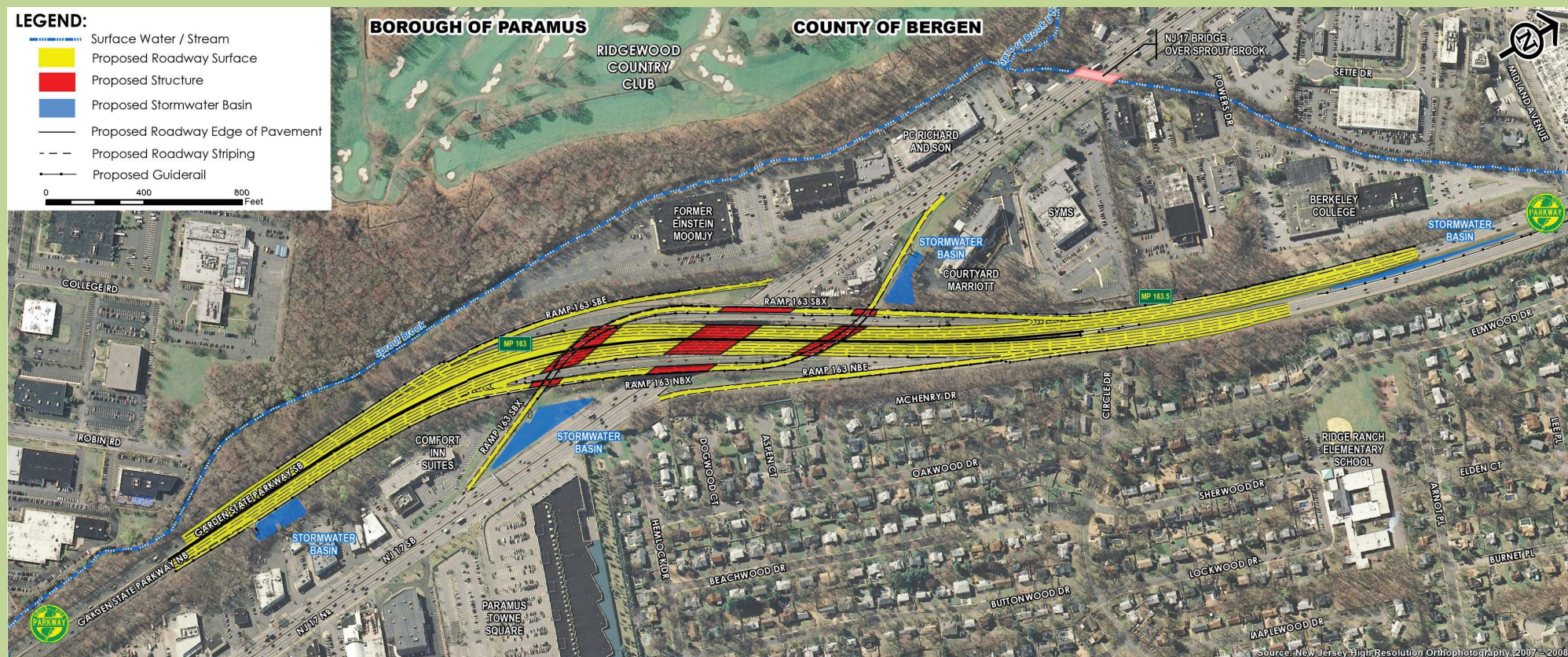
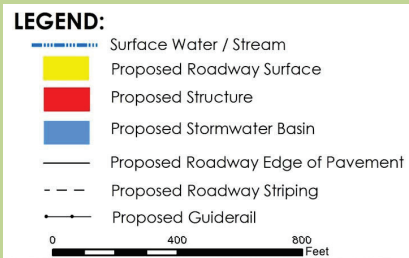
Public Hearing Agenda:

- Introduction of Purpose and Need
- Description of Improvements
- Public Comment



For more information: <http://www.state.nj.us/turnpike>





Project Overview

The purpose of the project is to improve the safety and operation of Interchange 163. This will be achieved by realigning northbound and southbound mainline sections of the GSP into the existing median in order to relocate the existing left side exits at the Interchange to the right side of the GSP. This project will also include stormwater drainage system enhancements and new and rehabilitated bridges.

- The proposed project improvements will provide:
 - Right side exits to Route 17 northbound and southbound
 - Rehabilitation of 4 bridges and the construction of 3 new bridges
 - Improved overhead signing
 - Extended acceleration and deceleration lanes
 - New water quality basins
- All work on the GSP will be completed within the existing right-of-way
- The estimated construction cost is \$ 66 million
- The estimated completion of construction work is Fall 2016.

Permits and Approvals

- NJ Executive Order 215 Environmental Impact Statement (Approved May 2013)
- NJDEP Land Use Regulation Program
 - Letter of Interpretation (Issued May 2013)
 - Individual Freshwater Wetlands Permit (IP), Section 401 Water Quality Certification (Application Submitted September 2013)
 - Flood Hazard Area Permit (including Stormwater Management review) (Application Submitted September 2013)
- NJDEP Forest Service
 - No Net Loss Reforestation (Application Anticipated December 2013)
- Bergen County Soil Conservation District
 - Soil Erosion and Sediment Control Certification (Application Anticipated December 2013)



Project Implementation Schedule



Public Hearing Rules

This public hearing is pursuant to both the New Jersey Executive Order 172 (EO 172) and the No Net Loss Reforestation Act (N.J.S.A. 13:1L-14.1 et.ewq.). EO 172 requires that the Authority conduct a public hearing to advise the public of certain highway projects prior to the start of construction. The No Net Loss Reforestation Act requires a public hearing to present information concerning the clearing of, and compensation for, greater than one acre of forested area. In accordance with the New Jersey No Net loss Act, the Authority will present information concerning the clearing of trees in association with the project and proposed reforestation efforts.

The following rules will govern the Public Comment portion of tonight's Public Hearing beginning at 6:00 p.m.

1. Everyone wishing to speak must register at the desk located at the entrance to the meeting room.
2. Speakers will be called in the order in which they registered, except for public officials who will be given priority.
3. Speakers are asked to state their full name and address, and spell their last name. All comments will be recorded by the Certified Court Reporter.
4. Oral comments for public officials will be limited to 10 minutes. Oral comments for the members of the public will be limited to 5 minutes. Remaining time cannot be assigned to another speaker. There is no limit on the length of written comments.
5. The Public Hearing will end when all those registered to comment have done so.

The record shall remain open for sixty (60) days after the hearing, until February 8, 2014 and any additional comments must be submitted in writing to:

Lamis T. Malak, P.E.
Hearing Officer
New Jersey Turnpike Authority
PO Box 5042
Woodbridge, New Jersey 07095

All comments will be addressed in a written Final Hearing Report, which will be issued after the close of the comment period.





The New Jersey Turnpike Authority
Garden State Parkway Interchange 163
MP 162.7 to 163.7
Paramus, New Jersey
Interchange Improvement Project



Public Hearing Registration December 10, 2013

Please Sign In

LAST NAME	FIRST NAME	ORGANIZATION	ADDRESS AND ZIP CODE	PHONE	FAX	EMAIL
McLak	Larrys	NJTA	581 Main Street Woodbridge, NJ 07095	732-750-5200 x8447		amclak@turnpike.state.nj.us
Withers	John	NJTA	"	732-750-5200 x8483		withers@turnpike.state.nj.us
Fellw	Anthony	Denbury	200 Broadway Drive, Suite 100 Blomfield, NJ 07003	973 780-4477 9053		Afellw@denbury.com
Hill	Dore	Denbury	"	973 780-9068		D.Hill@denbury.com
Vaezi	Ali	Denbury	"	973 780-9350		AVaezi@denbury.com
Archer	Liz	Denbury	"	973-780-5332		LArcher@denbury.com
Heaven	Jim	Denbury	600 Persimmon Road, Suite 100 Persimmon, NJ 07054	973 576-0109		JHeaven@denbury.com
Smith	Leroy	Denbury	"	973 576-9647		L.Smith@denbury.com



The New Jersey Turnpike Authority
Garden State Parkway Interchange 163
MP 162.7 to 163.7
Paramus, New Jersey
Interchange Improvement Project



Public Hearing Registration December 10, 2013

Please Sign In

LAST NAME	FIRST NAME	ORGANIZATION	ADDRESS AND ZIP CODE	PHONE	FAX	EMAIL
Fragapane	Frank	HAKS	410 Wall St.	212-747-1997 973-809-8391		ffragapane@haks.net.
SEXTON III	JOSEPH A.	PARAMUS GARDEN STATE PARKWAY	1 Jackson Square PARAMUS N.J. 07652	201-265-2100 x12686		JSEXTON@PARAMUSBOROUGH.ORG
MIQUEL	LISSETTE	EMERSON	39 Congress Rd EMERSON, NJ	732-540-4007		LMIQUEL@HAKS.NET
COMERY	William.	N.J. Forestry Council	285 FARVIEW AVE PARAMUS, NJ	201-261-3958		_____

Appendix D: Hearing Transcript



www.dewberry.com

1
2
3
4
5
6
7
8
9
10
11
12
13
14
15
16
17
18
19
20
21
22
23
24
25

NEW JERSEY TURNPIKE AUTHORITY
PARAMUS LIFE SAFETY COMPLEX
PARAMUS, NEW JERSEY
TUESDAY, DECEMBER 10, 2013
COMMENCING AT 6:00 PM

RE: :
GARDEN STATE PARKWAY : PUBLIC
INTERCHANGE 163 IMPROVEMENTS : HEARING

- - - - -

B E F O R E:
LAMIS T. MALAK, P. E., NJTA SENIOR HIGHWAY
ENGINEER, HEARING OFFICER
A L S O P R E S E N T:
ANTHONY FULCO, P. E., PROJECT MANAGER, DEWBERRY

ROSENBERG & ASSOCIATES, INC.
Certified Court Reporters & Videographers
425 Eagle Rock Ave., Ste 201 250 Park Ave., 7th Fl.
Roseland, NJ 07068 New York, NY 10177
(973) 228-9100 1-800-662-6878 (212) 868-1936
www.rosenbergandassociates.com

1 MS. MALAK: Good evening and welcome.
2 Today, we're gathered for the public hearing of the
3 New Jersey Turnpike Authority's Garden State Parkway
4 Interchange 163 Improvement project. I am Lamis
5 Malak. I am the New Jersey Turnpike Authority's
6 Project Manager for these improvements. It is now
7 6:00 p.m., on Tuesday, December 10th, 2013. I'll be
8 the Hearing Officer for these proceedings. Thank you
9 for participating.

10 This hearing is being conducted pursuant
11 to Executive Order No. 172, and the format of this
12 hearing will follow its requirements. The purpose of
13 the hearing is for the Authority to receive your
14 opinions, recommendations, suggestions and comments
15 regarding the project and to review and address
16 reforestation within the project limits.

17 Tonight's agenda includes, a discussion
18 on the purpose and need of the project and a
19 description of the proposed improvements. After the
20 presentation, public officials and then members of
21 the public will be given the opportunity to provide
22 comments to the record as follows. It's in the
23 handout.

24 Anyone who wishes to speak should
25 register at the table located at the entrance to the

1 auditorium. Please provide all the necessary
2 information listed on the form.

3 Public officials who have registered to
4 speak will be given the opportunity to speak first.
5 They'll be afforded 10 minutes.

6 Then, members of the public who wish to
7 speak will be given an opportunity to speak. They'll
8 be afforded five minutes, and please keep in mind
9 that the comment session is not intended to be a
10 question-and-answer period.

11 The proceedings are being recorded by a
12 Certified Court Reporter. When you speak, please
13 state your name, spell your last name and state your
14 town of residency loudly and clearly so that the
15 court reporter can hear you.

16 You have the option of providing written
17 comments using the forms located on the registration
18 table. The written comment will be entered into the
19 record. The Authority will accept written comments
20 from any members of the public. Members of the
21 public may provide written comments before February
22 8th, 2014, the hearing closing date.

23 We'll evaluate all comments received,
24 both verbal and written and will address them by way
25 of a hearing report that will be prepared by the

1 Authority. Hearing report preparation will begin
2 after the hearing closing date. A copy of the
3 hearing report will be sent to all municipalities and
4 counties within the project.

5 The Interchange 163 Improvement project
6 is located in Paramus, Bergen County, New Jersey.
7 The Authority had identified issues with this
8 location after completing a study of the northern
9 interchanges on the Parkway in 2008.

10 The issue at this location is with the
11 left sided exits, as you could see in the picture.
12 The exiting traffic frequently queues into the left
13 through lane of the Garden State Parkway causing
14 accidents with through traffic.

15 These locations are, the northbound
16 Garden State Parkway exit to 17 north and the
17 southbound Garden State Parkway exit to Route 17
18 south. They were identified as having accident rates
19 above both both Parkway average and the Statewide
20 average.

21 The Authority performed additional
22 concept studies in 2011, and developed a preferred
23 alternative which is to relocate the left side exits
24 to the right side of the Parkway. In order to
25 achieve this, the mainline of the Parkway will be

1 relocated to the existing median area and the
2 exiting traffic will be relocated to the right by
3 using the footprint of the existing Parkway. This
4 alternative will construct most of the improvements
5 off line and allow the exits to remain open during
6 construction.

7 Another purpose of this public hearing
8 is to address deforestation.

9 Trees will be cleared as part of the
10 Interchange 163 improvements.

11 The New Jersey Turnpike Authority is
12 subject to the requirements of the New Jersey No Net
13 Loss Reforestation Act and as such, is required by
14 law to mitigate the loss of trees in excess of one
15 acre. A reforestation plan was submitted to the New
16 Jersey Department of Environmental Protection on
17 November 15th, 2013. The deforestation is four
18 acres.

19 It is the Authority's intent to mitigate
20 for the loss of these trees through direct monetary
21 compensation to the New Jersey Department of
22 Environmental Protection. The NJDEP is responsible
23 to utilize these monies in tree planting programs
24 within the project boundaries.

25 And now, Tony Fulco, the consulting

1 project manager for the Interchange 163 improvements,
2 will come up and give you the details.

3 MR. FULCO: Thank you.

4 As you could see here, this is the
5 proposed improvements. This picture here is similar
6 to the board we had presented here today. As Lamis
7 stated before, we're going to be taking the existing
8 northbound/southbound mainline improvements of the
9 Parkway and pinching them into the existing median
10 that's there. What that does, as Lamis stated, was
11 allow us to use the existing northbound/southbound
12 roadways for the exit movements, which will now
13 become right side exits. Limits of the project are
14 approximately 1000 feet north of Century Road and
15 1000 feet south of Midland Avenue.

16 In addition to the work that's getting
17 done for the relocation of the exit ramps, from the
18 left side to the right side, we're going to be
19 improving the acceleration and deceleration lanes up
20 to current design standards.

21 This picture here is just a blowup of
22 what we were talking about, to show you a little
23 better picture of the movement that will be
24 happening.

25 As you can see here, within the project

1 there's going to be six new structures that will be
2 constructed for new mainline within the existing
3 median and the existing four structures that are
4 currently existing today will be rehabilitated.
5 We'll be doing deck replacement on those structures
6 and reducing the overall width from the three and four
7 lanes, that are currently out there today, to be a
8 single-lane-width ramp which will carry the exit
9 traffic to Route 17 northbound and from the Parkway
10 to Route 17 southbound.

11 Some of the other improvements that
12 we're doing within the project is highway lighting.
13 The existing lighting out there today is basically
14 wood pole lights -- lights on wood poles. We're
15 going to be changing that to be a conventional
16 highway lighting system in addition to that.

17 Median barriers are going to be
18 replaced, upgrading median barriers from basically
19 the Century Road structure there north to the project
20 limits where we come into a wider median again and
21 guide rail will be placed up through the Midland
22 Avenue area of the north Parkway.

23 In addition, drainage improvements will
24 be provided for the project. We'll be providing
25 closed pipe systems, drainage ditch to improve the

1 drainage for the new system we have going in. On the
2 outer limits of the project we'll have umbrella
3 sections, drains will be picked up by ditches
4 conveyed to stormwater management basins and treated
5 that way before it's released into the Sprout Brook.
6 Within the median area we'll be having a closed pipe
7 system and we'll be conveying the water in that
8 manner.

9 In addition, with the drainage
10 improvements, there are going to be four detention
11 basins within the project limits. These are required
12 as part of the DEP permit process we have to go
13 through. What it does, it allows us to detain the
14 water, to reduce the amount of peak flows during
15 storms so as not to create any additional grading.
16 In addition, we'll be upgrading, overhead signs and
17 cantilevers and existing structures.

18 As part of the issues with the project,
19 currently there's existing PSE&G transmission
20 electrical lines that currently cross over the
21 Parkway. These lines are going to be in the way of
22 the construction for the new median there and the
23 poles need to be relocated. As part of the Advanced
24 Utility contract, PSE&G is going to relocate these
25 facilities underground into the southbound right

1 shoulder of Route 17.

2 Maintenance and protection of traffic is
3 going to be a critical issue for the project. It's a
4 tight area here, we have existing roadways that are
5 going to be going on here.

6 During the peak hours of construction,
7 we'll be maintaining the same number of lanes out
8 there today, three through lanes in each direction,
9 as well as maintaining the ramps during construction
10 during peak hours. During normal construction, there
11 will be construction barriers, normal traffic control
12 devices that we use to protect the workers and the
13 traveling public for that.

14 Within the project, we have several
15 existing structures, we have Route 17 and a couple of
16 Parkway ramps that are going to be having structures
17 be rehabilitated. Within these structures, we're
18 going to be using a shielding and catching system
19 which is basically a system that prevents any debris,
20 objects, workers, protects anything from falling
21 onto the traffic below when the work is getting
22 completed.

23 Within the project limits also, the
24 Turnpike has recently installed very nice signs
25 within limits, north and south of the project and

1 we'll be using those to notify travelers of the
2 public that things will be happening within the
3 construction area.

4 Here, you just see a picture, too, of
5 what the shielding looks like that is used to protect
6 the ongoing or the existing traffic underneath the
7 active roadways.

8 Within the traffic control, like we
9 stated before, during peak hours of operation, we're
10 going to be maintaining the same number of lanes of
11 traffic but the Turnpike Authority does allow for
12 off-peak-hour lane closings that will be required for
13 the project.

14 Here is some of the types of work that
15 will be required: Installation of construction
16 barriers; traffic shift; delivery of materials; final
17 milling and resurfacing; striping. These usually
18 happen during the nighttime hours. It's basically
19 taking one lane or two lanes off of the through
20 movement of the Parkway as required.

21 In addition to the off-peak-hour lane
22 closings, we'll be requiring some detours. Detours
23 are going to be required for both the entry and exit
24 ramps off the Parkway and for Route 17. The main
25 reason for the detours will be for demolition of

1 existing bridges, erection of new girders, and we do
2 have to go in and mill the surface, we need to close
3 them down so that the work can get done in a single
4 work cycle day.

5 In addition, we'll be implementing a
6 high intensity construction cycle. This is something
7 the Turnpike Authority has been using recently, it
8 allows for the contractor to go in within a weekend
9 cycle, usually from midnight on Friday until 5:00 on
10 Monday morning, and give access to the area of the
11 project with a little more -- with additional lane
12 closings to allow them to get specific work done.
13 We're going to need these high intensity construction
14 cycles to do the tie-ins, when we have the median
15 work completed and we need to get -- we need to tie
16 the traffic into the new system.

17 Within the project, first thing we have
18 gone through is the Executive Order 215, the
19 Environmental Impact Statement. That process has
20 gone through the requirements for the DEP and
21 basically identified the proposed improvements that
22 we're proposing to complete -- to progress now.

23 The next set of permits that are
24 currently in to the DEP are environmental permits.
25 We've had an Individual Freshwater Wetlands Permit;

1 we have the Water Quality Certification; Individual
2 Flood Hazard Area Permit; and No Net Loss
3 Reforestation. These permits are currently in front
4 of the DEP for review and we're working with those
5 agencies to ensure all permits are secure prior to
6 starting construction.

7 Another permit that we have, or
8 certification, I should say, is what we're required
9 for the project with the Bergen County Soil
10 Conservation District, a Soil Erosion and Sediment
11 Control Certification. This certification requires
12 us to provide for the proper soil erosion features
13 and management of sediment from the project during
14 construction.

15 As you can see here from the project
16 schedule, we're currently finalizing design. As you
17 could see from here, we're looking for the project to
18 start construction in mid-2014. During construction,
19 we do anticipate that there's going to be night work
20 that's going to get involved in the project here for
21 issues with certain types of work that can't get done
22 during the day, so there will be some construction
23 activities that have to be done and we'll work with
24 the town with those issues, with those construction
25 tasks that have to get completed.

1 In addition, the Advanced Utility
2 contract will be getting done earlier in 2014, so
3 this way the utilities are completed and relocated
4 out of the way prior to the construction of the -- or
5 the contractor to come in.

6 Estimated cost of the project is between
7 65 and 70 million dollars as it currently stands
8 today.

9 Now I'd like to turn it back over to
10 Lamis.

11 MS. MALAK: Before I start, did anyone
12 sign up to speak?

13 Okay. Well, if anyone comes in, they
14 are invited to speak about the physical improvements
15 as well as the deforestation and mitigation for the
16 loss of trees, either orally at the hearing or in
17 writing using the comment cards.

18 So, we're going to suspend until 7:00
19 p.m. or if someone comes in.

20 Thanks.

21 (Whereupon, a recess is taken.)

22 MS. MALAK: It is now 7:00 p.m. The
23 hearing is now closed. The hearing report will be
24 prepared by the Authority and will be available for
25 the public.

1 I thank everyone for attending.

2 (Whereupon, the proceedings are
3 adjourned at 7:01 p.m.)

4

5

6

7

8

9

10

11

12

13

14

15

16

17

18

19

20

21

22

23

24

25

C E R T I F I C A T E

I, JOANNE M. OPPERMANN, a Certified
Court Reporter and Notary Public of the State of New
Jersey, do hereby state that the foregoing is a true
and accurate transcript of my stenographic notes of
the within proceedings, to the best of my ability.



Joanne M. Oppermann

JOANNE M. OPPERMANN, C.C.R.

License No. XI01435

<p>A</p> <p>ability 15:7</p> <p>about 6:22 13:14</p> <p>above 4:19</p> <p>acceleration 6:19</p> <p>accept 3:19</p> <p>access 11:10</p> <p>accident 4:18</p> <p>accidents 4:14</p> <p>accurate 15:6</p> <p>achieve 4:25</p> <p>acre 5:15</p> <p>acres 5:18</p> <p>Act 5:13</p> <p>active 10:7</p> <p>activities 12:23</p> <p>addition 6:16 7:16, 23 8:9 8:16 10:21 11:5 13:1</p> <p>additional 4:21 8:15 11:11</p> <p>address 2:15 3:24 5:8</p> <p>adjourned 14:3</p> <p>Advanced 8:23 13:1</p> <p>afforded 3:5, 8</p> <p>after 2:19 4:2 4:8</p> <p>again 7:20</p> <p>agencies 12:5</p> <p>agenda 2:17</p> <p>allow 5:5 6:11 10:11 11:12</p> <p>allows 8:13 11:8</p> <p>alternative 4:23 5:4</p> <p>amount 8:14</p> <p>Another 5:7 12:7</p>	<p>ANTHONY 1:15</p> <p>anticipate 12:19</p> <p>anyone 2:24 13:11, 13</p> <p>anything 9:20</p> <p>approximately 6:14</p> <p>area 5:1 7:22 8:6 9:4 10:3 11:10 12:2</p> <p>ASSOCIATES 1:20</p> <p>attending 14:1</p> <p>auditorium 3:1</p> <p>Authority 1:1 2:13 3:19 4:1, 7, 21 5:11 10:11 11:7 13:24</p> <p>Authority's 2:3, 5 5:19</p> <p>available 13:24</p> <p>Ave 1:22, 22</p> <p>Avenue 6:15 7:22</p> <p>average 4:19 4:20</p> <p>B</p> <p>back 13:9</p> <p>barriers 7:17 7:18 9:11 10:16</p> <p>basically 7:13 7:18 9:19 10:18 11:21</p> <p>basins 8:4, 11</p> <p>become 6:13</p> <p>before 3:21 6:7 8:5 10:9 13:11</p> <p>begin 4:1</p> <p>being 2:10 3:11</p>	<p>below 9:21</p> <p>Bergen 4:6 12:9</p> <p>best 15:7</p> <p>better 6:23</p> <p>between 13:6</p> <p>blowup 6:21</p> <p>board 6:6</p> <p>Book 8:5</p> <p>both 3:24 4:19 4:19 10:23</p> <p>boundaries 5:24</p> <p>bridges 11:1</p> <p>C</p> <p>cantilevers 8:17</p> <p>can't 12:21</p> <p>cards 13:17</p> <p>carry 7:8</p> <p>catching 9:18</p> <p>causing 4:13</p> <p>Century 6:14 7:19</p> <p>certain 12:21</p> <p>certification 12:1, 8, 11, 11</p> <p>Certified 1:21 3:12 15:3</p> <p>changing 7:15</p> <p>cleared 5:9</p> <p>clearly 3:14</p> <p>close 11:2</p> <p>closed 7:25 8:6 13:23</p> <p>closing 3:22 4:2</p> <p>closings 10:12 10:22 11:12</p> <p>come 6:2 7:20 13:5</p> <p>comes 13:13, 19</p> <p>COMMENCING 1:5</p> <p>comment 3:9, 18 13:17</p>	<p>comments 2:14 2:22 3:17, 19 3:21, 23</p> <p>compensation 5:21</p> <p>complete 11:22</p> <p>completed 9:22 11:15 12:25 13:3</p> <p>completing 4:8</p> <p>COMPLEX 1:2</p> <p>concept 4:22</p> <p>conducted 2:10</p> <p>Conservation 12:10</p> <p>construct 5:4</p> <p>constructed 7:2</p> <p>construction 5:6 8:22 9:6 9:9, 10, 11 10:3, 15 11:6 11:13 12:6 12:14, 18, 18 12:22, 24 13:4</p> <p>consulting 5:25</p> <p>contract 8:24 13:2</p> <p>contractor 11:8 13:5</p> <p>control 9:11 10:8 12:11</p> <p>conventional 7:15</p> <p>conveyed 8:4</p> <p>conveying 8:7</p> <p>copy 4:2</p> <p>cost 13:6</p> <p>could 4:11 6:4 12:17</p> <p>counties 4:4</p> <p>County 4:6 12:9</p> <p>couple 9:15</p>
---	--	--	---

court 1:21 3:12, 15 15:4 create 8:15 critical 9:3 cross 8:20 current 6:20 currently 7:4 7:7 8:19, 20 11:24 12:3 12:16 13:7 cycle 11:4, 6, 9 cycles 11:14 C.C.R 15:20	discussion 2:17 District 12:10 ditch 7:25 ditches 8:3 doing 7:5, 12 dollars 13:7 done 6:17 11:3 11:12 12:21 12:23 13:2 down 11:3 drainage 7:23 7:25 8:1, 9 drains 8:3 during 5:5 8:14 9:6, 9 9:10, 10 10:9 10:18 12:13 12:18, 22	6:7, 9, 11 7:2 7:3, 4, 13 8:17, 19 9:4 9:15 10:6 11:1 exit 4:16, 17 6:12, 17 7:8 10:23 exiting 4:12 5:2 exits 4:11, 23 5:5 6:13	12:13, 15, 17 front 12:3 Fulco 1:15 5:25 6:3
<hr/> D	<hr/> E	<hr/> F	<hr/> G
date 3:22 4:2 day 11:4 12:22 debris 9:19 deceleration 6:19 December 1:4 2:7 deck 7:5 deforestation 5:8, 17 13:15 delivery 10:16 demolition 10:25 DEP 8:12 11:20 11:24 12:4 Department 5:16, 21 description 2:19 design 6:20 12:16 details 6:2 detain 8:13 detention 8:10 detours 10:22 10:22, 25 developed 4:22 devices 9:12 DEWBERRY 1:15 direct 5:20 direction 9:8	each 9:8 Eagle 1:22 earlier 13:2 either 13:16 electrical 8:20 ENGINEER 1:13 ensure 12:5 entered 3:18 entrance 2:25 entry 10:23 environmental 5:16, 22 11:19, 24 erection 11:1 erosion 12:10 12:12 Estimated 13:6 evaluate 3:23 evening 2:1 everyone 14:1 excess 5:14 Executive 2:11 11:18 existing 5:1, 3	facilities 8:25 falling 9:20 features 12:12 February 3:21 feet 6:14, 15 final 10:16 finalizing 12:16 first 3:4 11:17 five 3:8 Fl 1:22 Flood 12:2 flows 8:14 follow 2:12 follows 2:22 footprint 5:3 foregoing 15:5 form 3:2 format 2:11 forms 3:17 four 5:17 7:3 7:6 8:10 frequently 4:12 Freshwater 11:25 Friday 11:9 from 3:20 6:17 7:6, 9, 18 9:20 11:9	Garden 1:8 2:3 4:13, 16, 17 gathered 2:2 getting 6:16 9:21 13:2 girders 11:1 give 6:2 11:10 given 2:21 3:4 3:7 go 8:12 11:2, 8 going 6:7, 18 7:1, 15, 17 8:1, 10, 21, 24 9:3, 5, 5, 16 9:18 10:10 10:23 11:13 12:19, 20 13:18 gone 11:18, 20 Good 2:1 grading 8:15 guide 7:21
			<hr/> H
			handout 2:23 happen 10:18 happening 6:24 10:2 Hazard 12:2 hear 3:15 hearing 1:9, 13 2:2, 8, 10, 12 2:13 3:22, 25 4:1, 2, 3 5:7 13:16, 23, 23 here 6:4, 5, 6 6:21, 25 9:4 9:5 10:4, 14 12:15, 17, 20 hereby 15:5

high 11:6, 13 highway 1:12 7:12, 16 hours 9:6, 10 10:9, 18 <hr/> I <hr/> identified 4:7 4:18 11:21 Impact 11:19 implementing 11:5 improve 7:25 Improvement 2:4 4:5 improvements 1:9 2:6, 19 5:4, 10 6:1, 5 6:8 7:11, 23 8:10 11:21 13:14 improving 6:19 includes 2:17 Individual 11:25 12:1 information 3:2 Installation 10:15 installed 9:24 intended 3:9 intensity 11:6 11:13 intent 5:19 Interchange 1:9 2:4 4:5 5:10 6:1 interchanges 4:9 invited 13:14 involved 12:20 issue 4:10 9:3 issues 4:7 8:18 12:21 12:24 it's 2:22 8:5	9:3 10:18 I'd 13:9 I'll 2:7 <hr/> J <hr/> Jersey 1:1, 3 2:3, 5 4:6 5:11, 12, 16 5:21 15:5 JOANNE 15:3, 20 just 6:21 10:4 <hr/> K <hr/> keep 3:8 <hr/> L <hr/> Lamis 1:12 2:4 6:6, 10 13:10 lane 4:13 10:12, 19, 21 11:11 lanes 6:19 7:7 9:7, 8 10:10 10:19 last 3:13 law 5:14 left 4:11, 12 4:23 6:18 License 15:21 LIFE 1:2 lighting 7:12 7:13, 16 lights 7:14, 14 limits 2:16 6:13 7:20 8:2, 11 9:23 9:25 line 5:5 lines 8:20, 21 listed 3:2 little 6:22 11:11 located 2:25 3:17 4:6 location 4:8 4:10	locations 4:15 looking 12:17 looks 10:5 loss 5:13, 14 5:20 12:2 13:16 loudly 3:14 <hr/> M <hr/> main 10:24 mainline 4:25 6:8 7:2 maintaining 9:7, 9 10:10 Maintenance 9:2 Malak 1:12 2:1 2:5 13:11, 22 management 8:4 12:13 manager 1:15 2:6 6:1 manner 8:8 materials 10:16 may 3:21 median 5:1 6:9 7:3, 17, 18, 20 8:6, 22 11:14 members 2:20 3:6, 20, 20 Midland 6:15 7:21 midnight 11:9 mid-2014 12:18 mill 11:2 milling 10:17 million 13:7 mind 3:8 minutes 3:5, 8 mitigate 5:14 5:19 mitigation 13:15 Monday 11:10 monetary 5:20	monies 5:23 morning 11:10 movement 6:23 10:20 movements 6:12 municipali... 4:3 <hr/> N <hr/> name 3:13, 13 necessary 3:1 need 2:18 8:23 11:2, 13, 15 11:15 Net 5:12 12:2 new 1:1, 3, 23 2:3, 5 4:6 5:11, 12, 15 5:21 7:1, 2 8:1, 22 11:1 11:16 15:4 next 11:23 nice 9:24 night 12:19 nighttime 10:18 NJ 1:23 NJDEP 5:22 NJTA 1:12 normal 9:10, 11 north 4:16 6:14 7:19, 22 9:25 northbound 4:15 7:9 northbound... 6:8, 11 northern 4:8 Notary 15:4 notes 15:6 notify 10:1 November 5:17 now 2:6 5:25 6:12 11:22 13:9, 22, 23 number 9:7
---	--	---	--

10:10 NY 1:23	peak 8:14 9:6 9:10 10:9 performed 4:21 period 3:10 permit 8:12 11:25 12:2, 7 permits 11:23 11:24 12:3, 5 physical 13:14 picked 8:3 picture 4:11 6:5, 21, 23 10:4 pinching 6:9 pipe 7:25 8:6 placed 7:21 plan 5:15 planting 5:23 please 3:1, 8 3:12 PM 1:5 pole 7:14 poles 7:14 8:23 preferred 4:22 preparation 4:1 prepared 3:25 13:24 presentation 2:20 presented 6:6 prevents 9:19 prior 12:5 13:4 proceedings 2:8 3:11 14:2 15:7 process 8:12 11:19 programs 5:23 progress 11:22 project 1:15 2:4, 6, 15, 16 2:18 4:4, 5 5:24 6:1, 13	6:25 7:12, 19 7:24 8:2, 11 8:18 9:3, 14 9:23, 25 10:13 11:11 11:17 12:9 12:13, 15, 17 12:20 13:6 proper 12:12 proposed 2:19 6:5 11:21 proposing 11:22 protect 9:12 10:5 protection 5:16, 22 9:2 protects 9:20 provide 2:21 3:1, 21 12:12 provided 7:24 providing 3:16 7:24 PSE&G 8:19, 24 public 1:8 2:2 2:20, 21 3:3 3:6, 20, 21 5:7 9:13 10:2 13:25 15:4 purpose 2:12 2:18 5:7 pursuant 2:10 p.m. 2:7 13:19 13:22 14:3	9:16 10:24 rates 4:18 reason 10:25 receive 2:13 received 3:23 recently 9:24 11:7 recess 13:21 recommenda... 2:14 record 2:22 3:19 recorded 3:11 reduce 8:14 reducing 7:6 reforestation 2:16 5:13, 15 12:3 regarding 2:15 register 2:25 registered 3:3 registration 3:17 rehabilitated 7:4 9:17 released 8:5 relocate 4:23 8:24 relocated 5:1 5:2 8:23 13:3 relocation 6:17 remain 5:5 replaced 7:18 replacement 7:5 report 3:25 4:1, 3 13:23 reporter 3:12 3:15 15:4 Reporters 1:21 required 5:13 8:11 10:12 10:15, 20, 23 12:8
O			
objects 9:20 Officer 1:13 2:8 officials 2:20 3:3 off-peak-hour 10:12, 21 Okay 13:13 one 5:14 10:19 ongoing 10:6 onto 9:21 open 5:5 operation 10:9 opinions 2:14 OPPERMANN 15:3 15:20 opportunity 2:21 3:4, 7 option 3:16 orally 13:16 order 2:11 4:24 11:18 other 7:11 outer 8:2 overall 7:6 overhead 8:16			
P			
Paramus 1:2, 3 4:6 Park 1:22 Parkway 1:8 2:3 4:9, 13 4:16, 17, 19 4:24, 25 5:3 6:9 7:9, 22 8:21 9:16 10:20, 24 part 5:9 8:12 8:18, 23 participating 2:9			
		Q	
		Quality 12:1 question-a... 3:10 queues 4:12	
		R	
		rail 7:21 ramp 7:8 ramps 6:17 9:9	

requirements 2:12 5:12 11:20 requires 12:11 requiring 10:22 residency 3:14 responsible 5:22 resurfacing 10:17 review 2:15 12:4 right 4:24 5:2 6:13, 18 8:25 Road 6:14 7:19 roadways 6:12 9:4 10:7 Rock 1:22 Roseland 1:23 ROSENBERG 1:20 Route 4:17 7:9 7:10 9:1, 15 10:24	shoulder 9:1 show 6:22 side 4:23, 24 6:13, 18, 18 sided 4:11 sign 13:12 signs 8:16 9:24 similar 6:5 single 11:3 single-lan... 7:8 six 7:1 soil 12:9, 10 12:12 south 4:18 6:15 9:25 southbound 4:17 7:10 8:25 speak 2:24 3:4 3:4, 7, 7, 12 13:12, 14 specific 11:12 spell 3:13 Sprout 8:5 standards 6:20 stands 13:7 start 12:18 13:11 starting 12:6 state 1:8 2:3 3:13, 13 4:13 4:16, 17 15:4 15:5 stated 6:7, 10 10:9 Statement 11:19 Statewide 4:19 Ste 1:22 stenographic 15:6 storms 8:15 stormwater 8:4 striping 10:17	structure 7:19 structures 7:1 7:3, 5 8:17 9:15, 16, 17 studies 4:22 study 4:8 subject 5:12 submitted 5:15 such 5:13 suggestions 2:14 surface 11:2 suspend 13:18 system 7:16 8:1, 7 9:18 9:19 11:16 systems 7:25	12:24 traffic 4:12 4:14 5:2 7:9 9:2, 11, 21 10:6, 8, 11, 16 11:16 transcript 15:6 transmission 8:19 travelers 10:1 traveling 9:13 treated 8:4 tree 5:23 trees 5:9, 14 5:20 13:16 true 15:5 Tuesday 1:4 2:7 turn 13:9 Turnpike 1:1 2:3, 5 5:11 9:24 10:11 11:7 two 10:19 types 10:14 12:21
<hr/> S		<hr/> T	<hr/> U
SAFETY 1:2 same 9:7 10:10 schedule 12:16 sections 8:3 secure 12:5 sediment 12:10 12:13 see 4:11 6:4 6:25 10:4 12:15, 17 SENIOR 1:12 sent 4:3 session 3:9 set 11:23 several 9:14 shielding 9:18 10:5 shift 10:16 should 2:24 12:8		table 2:25 3:18 taken 13:21 taking 6:7 10:19 talking 6:22 tasks 12:25 thank 2:8 6:3 14:1 Thanks 13:20 that's 6:10, 16 12:20 there's 7:1 8:19 12:19 They'll 3:5, 7 thing 11:17 things 10:2 three 7:6 9:8 tie 11:15 tie-ins 11:14 tight 9:4 today 2:2 6:6 7:4, 7, 13 9:8 13:8 Tonight's 2:17 Tony 5:25 town 3:14	umbrella 8:2 underground 8:25 underneath 10:6 until 11:9 13:18 upgrading 7:18 8:16 use 6:11 9:12 usually 10:17 11:9 utilities 13:3 Utility 8:24 13:1 utilize 5:23

V	Y	70 13:7
verbal 3:24	York 1:23	8
Videographers	0	8th 3:22
1:21	07068 1:23	868-1936 1:24
W	1	9
water 8:7, 14	1-800-662-...	973 1:24
12:1	1:24	
way 3:24 8:5	10 1:4 3:5	
8:21 13:3, 4	10th 2:7	
weekend 11:8	1000 6:14, 15	
welcome 2:1	10177 1:23	
Wetlands 11:25	15th 5:17	
we'll 3:23 7:5	163 1:9 2:4	
7:24 8:2, 6, 7	4:5 5:10 6:1	
8:16 9:7	17 4:16, 17 7:9	
10:1, 22 11:5	7:10 9:1, 15	
12:23	10:24	
we're 2:2 6:7	172 2:11	
6:18 7:12, 14	2	
9:17 10:9	2008 4:9	
11:13, 22	201 1:22	
12:4, 8, 16, 17	2011 4:22	
13:18	2013 1:4 2:7	
We've 11:25	5:17	
wider 7:20	2014 3:22 13:2	
width 7:6	212 1:24	
wish 3:6	215 11:18	
wishes 2:24	228-9100 1:24	
wood 7:14, 14	250 1:22	
work 6:16 9:21	4	
10:14 11:3, 4	425 1:22	
11:12, 15	5	
12:19, 21, 23	5:00 11:9	
workers 9:12	6	
9:20	6:00 1:5 2:7	
working 12:4	65 13:7	
writing 13:17	7	
written 3:16	7th 1:22	
3:18, 19, 21	7:00 13:18, 22	
3:24	7:01 14:3	
www.rosenb...		
1:25		
X		
XI01435 15:21		